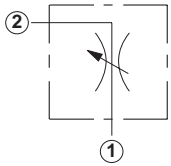


## Line Mounted Assemblies

# TWO PORT FLOW CONTROL APPLICATIONS (90 DEGREE BODIES)

### FULLY ADJUSTABLE NEEDLE

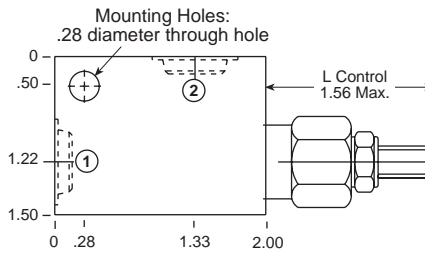
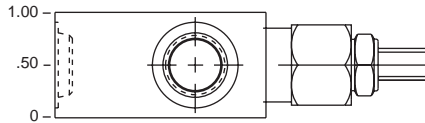


Ports 1 and 2	Assembly Model Code*
1/4" NPTF	<b>NFBC-L*N-AAA</b>
3/8" NPTF	<b>NFBC-L*N-AAB</b>
SAE-4	<b>NFBC-L*N-AAH</b>
SAE-6	<b>NFBC-L*N-AAI</b>

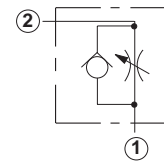
\*Add modifier /S to order Ductile Iron for pressure rating over 3000 psi.

Go to [www.sunhydraulics.com](http://www.sunhydraulics.com) for more product information and pricing.

### 0-.16 in. Cavity T-162A

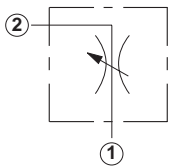


### FULLY ADJUSTABLE NEEDLE WITH REVERSE FREE FLOW CHECK



Ports 1 and 2	Assembly Model Code*
1/4" NPTF	<b>NCBB-L*N-AAA</b>
3/8" NPTF	<b>NCBB-L*N-AAB</b>
SAE-4	<b>NCBB-L*N-AAH</b>
SAE-6	<b>NCBB-L*N-AAI</b>

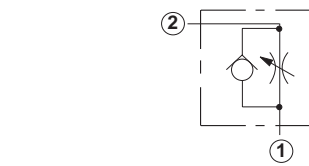
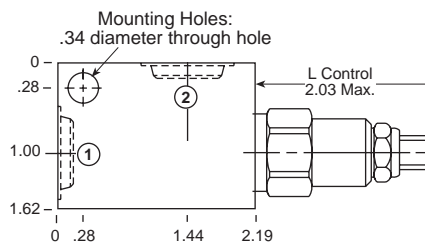
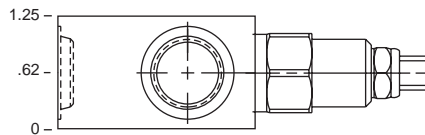
\*Add modifier /S to order Ductile Iron for pressure rating over 3000 psi.



Ports 1 and 2	Assembly Model Code*
1/4" NPTF	<b>NFCC-L*N-GAA</b>
3/8" NPTF	<b>NFCC-L*N-GAB</b>
SAE-4	<b>NFCC-L*N-GAH</b>
SAE-6	<b>NFCC-L*N-GAI</b>
SAE-8	<b>NFCC-L*N-GAJ</b>

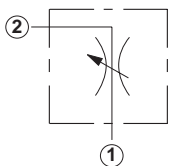
\*Add modifier /S to order Ductile Iron for pressure rating over 3000 psi.

### 0-.19 in. Cavity T-13A



Ports 1 and 2	Assembly Model Code*
1/4" NPTF	<b>NCCB-L*N-GAA</b>
3/8" NPTF	<b>NCCB-L*N-GAB</b>
SAE-4	<b>NCCB-L*N-GAH</b>
SAE-6	<b>NCCB-L*N-GAI</b>
SAE-8	<b>NCCB-L*N-GAJ</b>

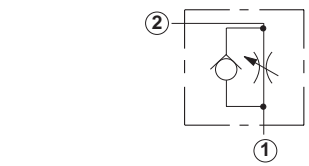
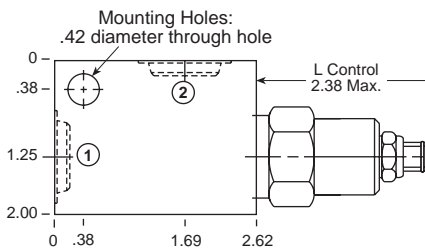
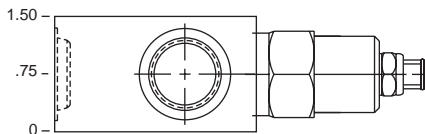
\*Add modifier /S to order Ductile Iron for pressure rating over 3000 psi.



Ports 1 and 2	Assembly Model Code*
1/4" NPTF	<b>NFDC-L*N-DAA</b>
3/8" NPTF	<b>NFDC-L*N-DAB</b>
1/2" NPTF	<b>NFDC-L*N-DAC</b>
SAE-4	<b>NFDC-L*N-DAI</b>
SAE-6	<b>NFDC-L*N-DAJ</b>
SAE-8	<b>NFDC-L*N-DAK</b>

\*Add modifier /S to order Ductile Iron for pressure rating over 3000 psi.

### 0-.25 in. Cavity T-5A



Ports 1 and 2	Assembly Model Code*
1/4" NPTF	<b>NCEB-L*N-DAA</b>
3/8" NPTF	<b>NCEB-L*N-DAB</b>
1/2" NPTF	<b>NCEB-L*N-DAC</b>
SAE-4	<b>NCEB-L*N-DAI</b>
SAE-6	<b>NCEB-L*N-DAJ</b>
SAE-8	<b>NCEB-L*N-DAK</b>

\*Add modifier /S to order Ductile Iron for pressure rating over 3000 psi.

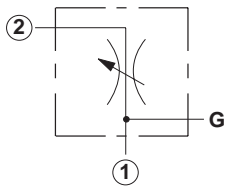
NOTES: Page 110 for cartridge models NF\*C-\*\*\* and NC\*B-\*\*\* shows performance curves, technical tips, and options. See page vii for technical information about line mount bodies including SAE flange pattern specifications. Consult your local Sun Distributor or the Sun Web Site for other port sizes available in the bodies shown above. Model Codes printed in red are Preferred Products and are readily available.

**TWO PORT FLOW CONTROL APPLICATIONS  
(90 DEGREE BODIES)**

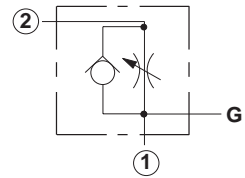
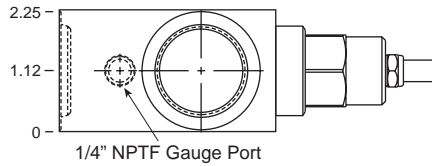
**FULLY ADJUSTABLE**

Go to [www.sunhydraulics.com](http://www.sunhydraulics.com) for more product information and pricing.

**FULLY ADJUSTABLE WITH REVERSE FREE FLOW CHECK**



**0-.38 in. Cavity T-16A**



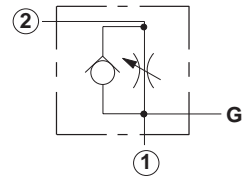
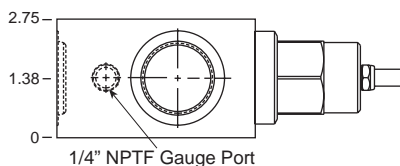
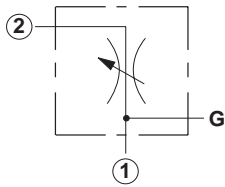
Ports 1 and 2	Assembly Model Code*
3/4" NPTF	<b>NFEC-L*N-IAD</b>
1" NPTF	<b>NFEC-L*N-IAE</b>
1 1/4" NPTF	<b>NFEC-L*N-IAF</b>
SAE-12	<b>NFEC-L*N-IAL</b>
SAE-16	<b>NFEC-L*N-IAM</b>

Ports 1 and 2	Assembly Model Code*
3/4" NPTF	<b>NCFB-L*N-IAD</b>
1" NPTF	<b>NCFB-L*N-IAE</b>
1 1/4" NPTF	<b>NCFB-L*N-IAF</b>
SAE-12	<b>NCFB-L*N-IAL</b>
SAE-16	<b>NCFB-L*N-IAM</b>

\*Add modifier /S to order Ductile Iron for pressure rating over 3000 psi.

\*Add modifier /S to order Ductile Iron for pressure rating over 3000 psi.

**0-.56 in. Cavity T-18A**



Ports 1 and 2	Assembly Model Code*
3/4" NPTF	<b>NFFC-L*N-LAD</b>
1" NPTF	<b>NFFC-L*N-LAE</b>
1 1/4" NPTF	<b>NFFC-L*N-LAF</b>
SAE-12	<b>NFFC-L*N-LAL</b>
SAE-16	<b>NFFC-L*N-LAM</b>

Ports 1 and 2	Assembly Model Code*
3/4" NPTF	<b>NCGB-L*N-LAD</b>
1" NPTF	<b>NCGB-L*N-LAE</b>
1 1/4" NPTF	<b>NCGB-L*N-LAF</b>
SAE-12	<b>NCGB-L*N-LAL</b>
SAE-16	<b>NCGB-L*N-LAM</b>

\*Add modifier /S to order Ductile Iron for pressure rating over 3000 psi.

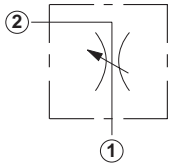
\*Add modifier /S to order Ductile Iron for pressure rating over 3000 psi.

NOTES: Page 110 for cartridge models NF\*C-\*\*\* and NC\*B-\*\*\* shows performance curves, technical tips, and options. See page vii for technical information about line mount bodies including SAE flange pattern specifications. Consult your local Sun Distributor or the Sun Web Site for other port sizes available in the bodies shown above. Model Codes printed in red are Preferred Products and are readily available.

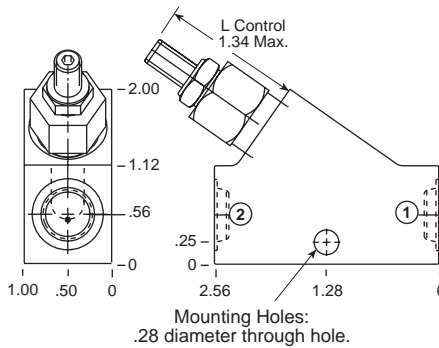
## Line Mounted Assemblies

TWO PORT FLOW CONTROL APPLICATIONS  
(INLINE BODIES)

## FULLY ADJUSTABLE NEEDLE

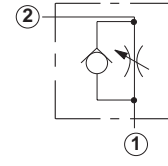
Go to [www.sunhydraulics.com](http://www.sunhydraulics.com)  
for more product information and pricing.FULLY ADJUSTABLE NEEDLE WITH  
REVERSE FREE FLOW CHECK

## 0-.16 in. Cavity T-162A



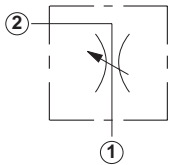
Ports 1 and 2	Assembly Model Code*
1/4" NPTF	<b>NFBC-L*N-ACA</b>
3/8" NPTF	<b>NFBC-L*N-ACB</b>
SAE-4	<b>NFBC-L*N-ACH</b>
SAE-6	<b>NFBC-L*N-ACI</b>

\*Add modifier /S to order Ductile Iron for pressure rating over 3000 psi.

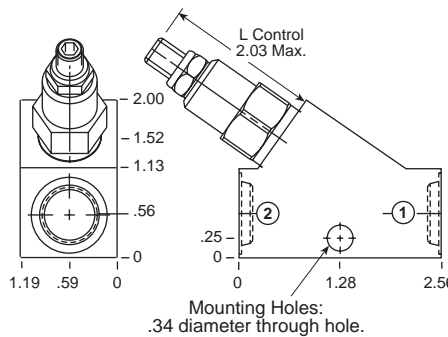


Ports 1 and 2	Assembly Model Code*
1/4" NPTF	<b>NCBB-L*N-ACA</b>
3/8" NPTF	<b>NCBB-L*N-ACB</b>
SAE-4	<b>NCBB-L*N-ACH</b>
SAE-6	<b>NCBB-L*N-ACI</b>

\*Add modifier /S to order Ductile Iron for pressure rating over 3000 psi.

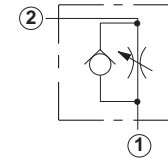


## 0-.19 in. Cavity T-13A



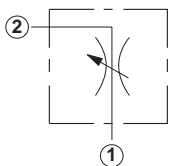
Ports 1 and 2	Assembly Model Code*
1/4" NPTF	<b>NFCC-L*N-GCA</b>
3/8" NPTF	<b>NFCC-L*N-GCB</b>
SAE-4	<b>NFCC-L*N-GCH</b>
SAE-6	<b>NFCC-L*N-GCI</b>
SAE-8	<b>NFCC-L*N-GCJ</b>

\*Add modifier /S to order Ductile Iron for pressure rating over 3000 psi.

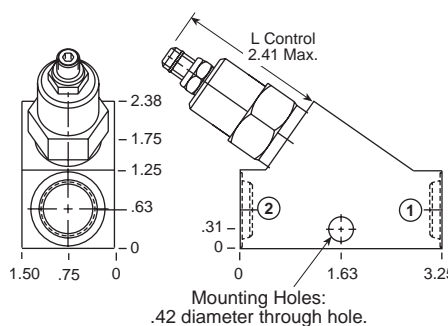


Ports 1 and 2	Assembly Model Code*
1/4" NPTF	<b>NCCB-L*N-GCA</b>
3/8" NPTF	<b>NCCB-L*N-GCB</b>
SAE-4	<b>NCCB-L*N-GCH</b>
SAE-6	<b>NCCB-L*N-GCI</b>
SAE-8	<b>NCCB-L*N-GCJ</b>

\*Add modifier /S to order Ductile Iron for pressure rating over 3000 psi.

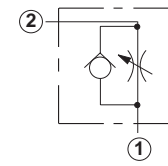


## 0-.25 in. Cavity T-5A



Ports 1 and 2	Assembly Model Code*
3/8" NPTF	<b>NFDC-L*N-DCB</b>
1/2" NPTF	<b>NFDC-L*N-DCC</b>
SAE-6	<b>NFDC-L*N-DCI</b>
SAE-8	<b>NFDC-L*N-DCJ</b>
SAE-10	<b>NFDC-L*N-DCK</b>

\*Add modifier /S to order Ductile Iron for pressure rating over 3000 psi.



Ports 1 and 2	Assembly Model Code*
3/8" NPTF	<b>NCEB-L*N-DCB</b>
1/2" NPTF	<b>NCEB-L*N-DCC</b>
SAE-6	<b>NCEB-L*N-DCI</b>
SAE-8	<b>NCEB-L*N-DCJ</b>
SAE-10	<b>NCEB-L*N-DCK</b>

\*Add modifier /S to order Ductile Iron for pressure rating over 3000 psi.

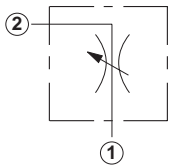
NOTES: Page 110 for cartridge models NF\*C-\*\*\* and NC\*B-\*\*\* shows performance curves, technical tips, and options. See page vii for technical information about line mount bodies including SAE flange pattern specifications. Consult your local Sun Distributor or the Sun Web Site for other port sizes available in the bodies shown above. Model Codes printed in red are Preferred Products and are readily available.

**TWO PORT FLOW CONTROL APPLICATIONS  
(INLINE/INLINE 1.50"/2.00" SAE C61 FLANGE PORT BODIES)**

**FULLY ADJUSTABLE NEEDLE**

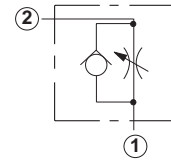
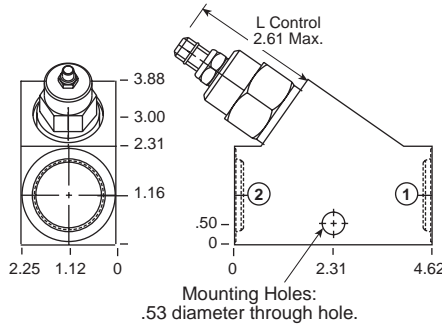
Go to [www.sunhydraulics.com](http://www.sunhydraulics.com) for more product information and pricing.

**FULLY ADJUSTABLE NEEDLE WITH REVERSE FREE FLOW CHECK**



Ports 1 and 2	Assembly Model Code*
3/4" NPTF	<b>NFEC-L*N-ICD</b>
1" NPTF	<b>NFEC-L*N-ICE</b>
1 1/4" NPTF	<b>NFEC-L*N-ICF</b>
SAE-12	<b>NFEC-L*N-ICL</b>
<b>SAE-16</b>	<b>NFEC-L*N-ICM</b>

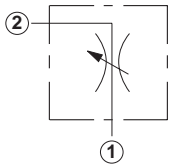
**0-.38 in. Cavity T-16A**



Ports 1 and 2	Assembly Model Code*
3/4" NPTF	<b>NCFB-L*N-ICD</b>
1" NPTF	<b>NCFB-L*N-ICE</b>
1 1/4" NPTF	<b>NCFB-L*N-ICF</b>
SAE-12	<b>NCFB-L*N-ICL</b>
<b>SAE-16</b>	<b>NCFB-L*N-ICM</b>

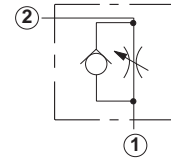
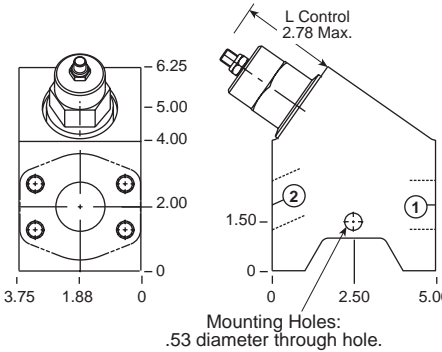
\*Add modifier /S to order Ductile Iron for pressure rating over 3000 psi.

\*Add modifier /S to order Ductile Iron for pressure rating over 3000 psi.



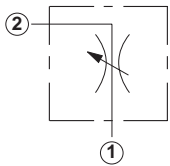
Ports 1 and 2	Assembly Model Code*
1 1/2" SAE C61	<b>NFFC-L*N-ZLS</b>

**0-.56 in. Cavity T-18A**



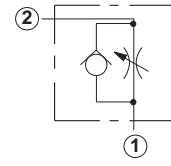
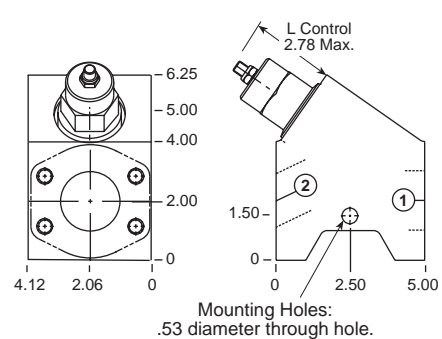
Ports 1 and 2	Assembly Model Code*
1 1/2" SAE C61	<b>NCGB-L*N-ZLS</b>

\*Add modifier /S to order Ductile Iron for pressure rating over 3000 psi.



Ports 1 and 2	Assembly Model Code*
2" SAE C61	<b>NFFC-L*N-ZLR</b>

**0-.56 in. Cavity T-18A**



Ports 1 and 2	Assembly Model Code*
2" SAE C61	<b>NCGB-L*N-ZLR</b>

\*Add modifier /S to order Ductile Iron for pressure rating over 3000 psi.

NOTES: Page 110 for cartridge models NF\*C-\*\*\* and NC\*B-\*\*\* shows performance curves, technical tips, and options. See page vii for technical information about line mount bodies including SAE flange pattern specifications. Consult your local Sun Distributor or the Sun Web Site for other port sizes available in the bodies shown above. **Model Codes printed in red are Preferred Products and are readily available.**

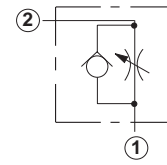
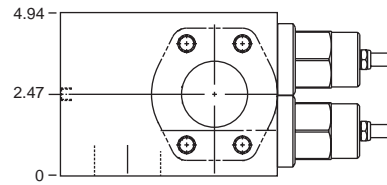
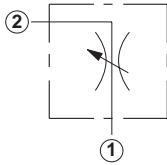
## Line Mounted Assemblies

## TWO PORT FLOW CONTROL APPLICATIONS (2.00" SAE C61/C62 FLANGE PORT BODIES, 2 PORT CAVITY IN PARALLEL)

FULLY ADJUSTABLE NEEDLE

Go to [www.sunhydraulics.com](http://www.sunhydraulics.com)  
for more product information and pricing.FULLY ADJUSTABLE NEEDLE WITH  
REVERSE FREE FLOW CHECK

## 0-1.10 in. Cavity T-18A

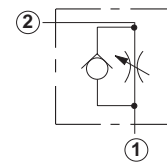
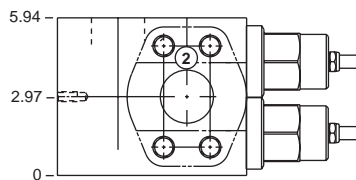
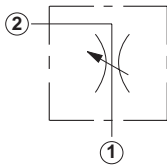


Ports 1 and 2	Assembly Model Code*
2" SAE C61	NFFC-L*N-XZY

Ports 1 and 2	Assembly Model Code*
2" SAE C61	NCGB-L*N-XZY

\*Add modifier /S to order Ductile Iron for pressure rating over 3000 psi.

## 0-1.10 in. Cavity T-18A



Ports 1 and 2	Assembly Model Code*
2" SAE C62	NFFC-L*N-VTN

Ports 1 and 2	Assembly Model Code*
2" SAE C62	NCGB-L*N-VTN

\*Add modifier /S to order Ductile Iron for pressure rating over 3000 psi.

NOTES: Page 110 for cartridge models NF\*C-\*\*\* and NC\*B-\*\*\* shows performance curves, technical tips, and options. See page vii for technical information about line mount bodies including SAE flange pattern specifications. Consult your local Sun Distributor or the Sun Web Site for other port sizes available in the bodies shown above.