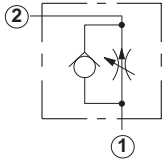


## Line Mounted Assemblies

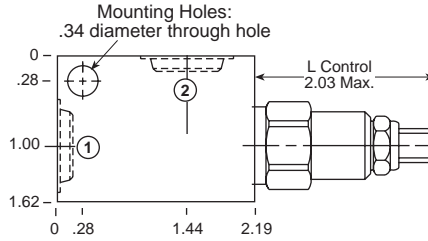
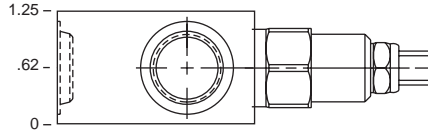
# TWO PORT FLOW CONTROL APPLICATIONS (90 DEGREE BODIES)

FULLY ADJUSTABLE WITH  
REVERSE FREE FLOW CHECK

Go to [www.sunhydraulics.com](http://www.sunhydraulics.com)  
for more product information and pricing.

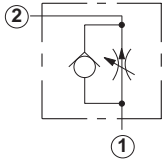


### .1-6.0 GPM Cavity T-13A

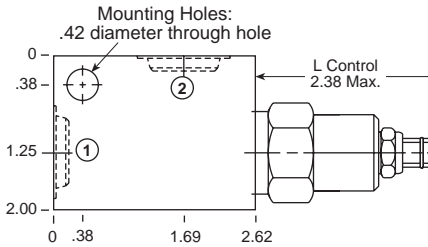
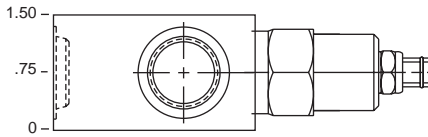


Ports 1 and 2	Assembly Model Code*
1/4" NPTF	<b>FDBA-LAN-GAA</b>
3/8" NPTF	<b>FDBA-LAN-GAB</b>
SAE-4	<b>FDBA-LAN-GAH</b>
<b>SAE-6</b>	<b>FDBA-LAN-GAI</b>
SAE-8	<b>FDBA-LAN-GAJ</b>

\*Add modifier /S to order Ductile Iron for pressure rating over 3000 psi.

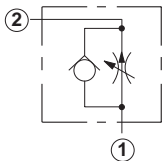


### .1-12.0 GPM Cavity T-5A

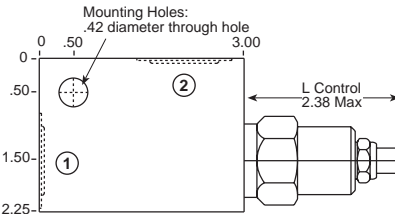
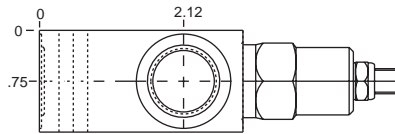


Ports 1 and 2	Assembly Model Code*
1/4" NPTF	<b>FDCB-LAN-DAA</b>
3/8" NPTF	<b>FDCB-LAN-DAB</b>
1/2" NPTF	<b>FDCB-LAN-DAC</b>
SAE-6	<b>FDCB-LAN-DAI</b>
SAE-8	<b>FDCB-LAN-DAJ</b>
<b>SAE-10</b>	<b>FDCB-LAN-DAK</b>

\*Add modifier /S to order Ductile Iron for pressure rating over 3000 psi.



### .0-12.0 GPM Cavity T-5A



Ports 1 and 2	Assembly Model Code*
3/4 NPTF	<b>FDCB-LAN-DAD</b>

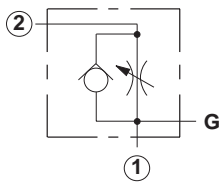
\*Add modifier /S to order Ductile Iron for pressure rating over 3000 psi.

NOTES: Page 126 for cartridge model FD\*\*-\* shows performance curves, technical tips, and options.  
See page vii for technical information about line mount bodies including SAE flange pattern specifications.  
Consult your local Sun Distributor or the Sun Web Site for other port sizes available in the bodies shown above.  
**Model Codes printed in red are Preferred Products and are readily available.**

# TWO PORT FLOW CONTROL APPLICATIONS (90 DEGREE BODIES)

FULLY ADJUSTABLE WITH REVERSE FREE FLOW CHECK

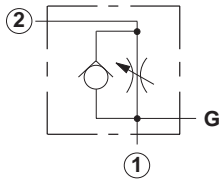
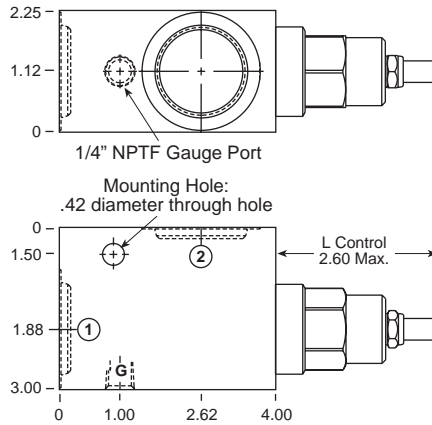
Go to [www.sunhydraulics.com](http://www.sunhydraulics.com) for more product information and pricing.



## .2-25 GPM Cavity T-16A

Ports 1 and 2	Assembly Model Code*
3/4" NPTF	<b>FDEA-LAN-IAD</b>
1" NPTF	<b>FDEA-LAN-IAE</b>
1 1/4" NPTF	<b>FDEA-LAN-IAF</b>
SAE-12	<b>FDEA-LAN-IAL</b>
SAE-16	<b>FDEA-LAN-IAM</b>

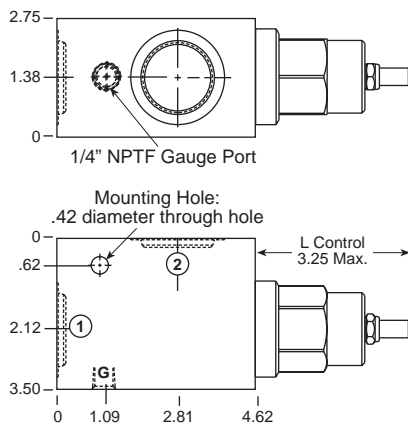
\*Add modifier /S to order Ductile Iron for pressure rating over 3000 psi.



## .2-50 GPM Cavity T-18A

Ports 1 and 2	Assembly Model Code*
3/4" NPTF	<b>FDFA-LAN-LAD</b>
1" NPTF	<b>FDFA-LAN-LAE</b>
1 1/4" NPTF	<b>FDFA-LAN-LAF</b>
SAE-12	<b>FDFA-LAN-LAL</b>
SAE-16	<b>FDFA-LAN-LAM</b>

\*Add modifier /S to order Ductile Iron for pressure rating over 3000 psi.



NOTES: Page 126 for cartridge model FD\*\*-\* shows performance curves, technical tips, and options.  
See page vii for technical information about line mount bodies including SAE flange pattern specifications.  
Consult your local Sun Distributor or the Sun Web Site for other port sizes available in the bodies shown above.  
Model Codes printed in red are Preferred Products and are readily available.

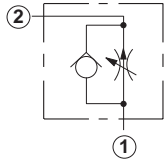
**Line Mounted Assemblies**

**TWO PORT FLOW CONTROL APPLICATIONS (INLINE BODIES)**

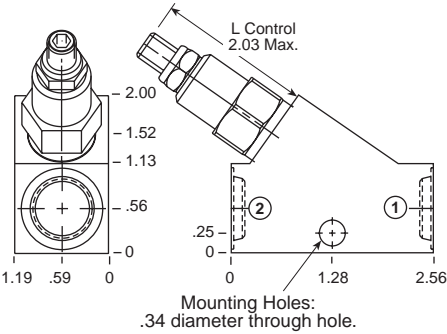
**FULLY ADJUSTABLE WITH REVERSE FREE FLOW CHECK**

Go to [www.sunhydraulics.com](http://www.sunhydraulics.com) for more product information and pricing.

**.1-6.0 GPM Cavity T-13A**

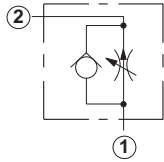


Ports 1 and 2	Assembly Model Code*
1/4" NPTF	<b>FDBA-LAN-GCA</b>
3/8" NPTF	<b>FDBA-LAN-GCB</b>
SAE-4	<b>FDBA-LAN-GCH</b>
SAE-6	<b>FDBA-LAN-GCI</b>
SAE-8	<b>FDBA-LAN-GCJ</b>

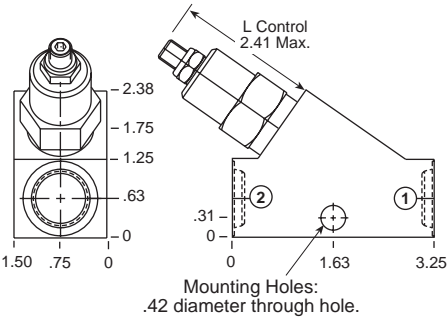


\*Add modifier /S to order Ductile Iron for pressure rating over 3000 psi.

**.1-12.0 GPM Cavity T-5A**



Ports 1 and 2	Assembly Model Code*
3/8" NPTF	<b>FDCB-LAN-DCB</b>
1/2" NPTF	<b>FDCB-LAN-DCC</b>
SAE-6	<b>FDCB-LAN-DCI</b>
SAE-8	<b>FDCB-LAN-DCJ</b>
SAE-10	<b>FDCB-LAN-DCK</b>



\*Add modifier /S to order Ductile Iron for pressure rating over 3000 psi.

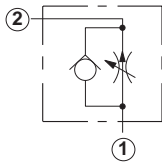
NOTES: Page 126 for cartridge model FD\*\*-\*\*\* shows performance curves, technical tips, and options. See page vii for technical information about line mount bodies including SAE flange pattern specifications. Consult your local Sun Distributor or the Sun Web Site for other port sizes available in the bodies shown above. Model Codes printed in red are Preferred Products and are readily available.

**TWO PORT FLOW CONTROL APPLICATIONS  
(INLINE/INLINE 1.50"/2.00" SAE C61 FLANGE PORT BODIES)**

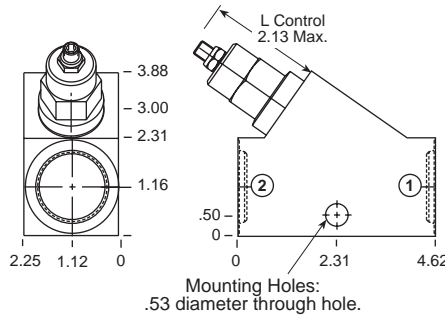
FULLY ADJUSTABLE WITH REVERSE FREE FLOW CHECK

Go to [www.sunhydraulics.com](http://www.sunhydraulics.com) for more product information and pricing.

**.2-25 GPM Cavity T-16A**

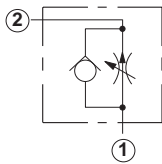


Ports 1 and 2	Assembly Model Code*
3/4" NPTF	<b>FDEA-LAN-ICD</b>
1" NPTF	<b>FDEA-LAN-ICE</b>
1 1/4" NPTF	<b>FDEA-LAN-ICF</b>
<b>SAE-12</b>	<b>FDEA-LAN-ICL</b>
SAE-16	<b>FDEA-LAN-ICM</b>

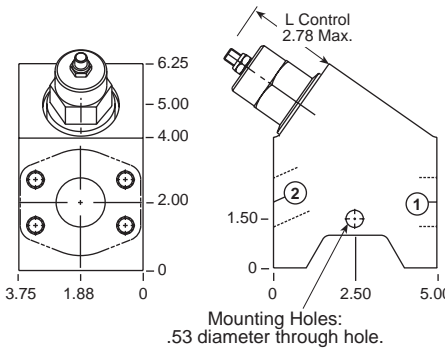


\*Add modifier **/S** to order Ductile Iron for pressure rating over 3000 psi.

**.2-50 GPM Cavity T-18A**

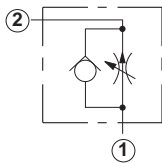


Ports 1 and 2	Assembly Model Code*
1 1/2" SAE C61	<b>FDFA-LAN-ZLS</b>

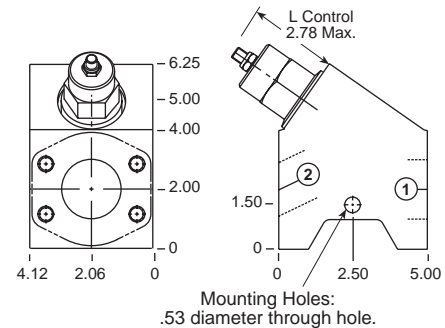


\*Add modifier **/S** to order Ductile Iron for pressure rating over 3000 psi.

**.2-50 GPM Cavity T-18A**



Ports 1 and 2	Assembly Model Code*
2" SAE C61	<b>FDFA-LAN-ZLR</b>



\*Add modifier **/S** to order Ductile Iron for pressure rating over 3000 psi.

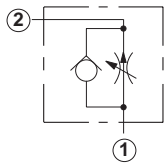
NOTES: Page 126 for cartridge model FD\*\*-\*\*\* shows performance curves, technical tips, and options.  
See page vii for technical information about line mount bodies including SAE flange pattern specifications.  
Consult your local Sun Distributor or the Sun Web Site for other port sizes available in the bodies shown above.  
**Model Codes printed in red are Preferred Products and are readily available.**

**Line Mounted Assemblies**

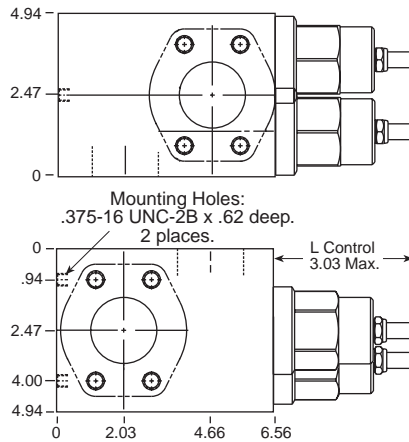
**TWO PORT FLOW CONTROL APPLICATIONS  
(2.00" SAE C61/C62 FLANGE PORT BODIES, 2 CAVITIES)**

**FULLY ADJUSTABLE WITH  
REVERSE FREE FLOW CHECK**

Go to [www.sunhydraulics.com](http://www.sunhydraulics.com)  
for more product information and pricing.



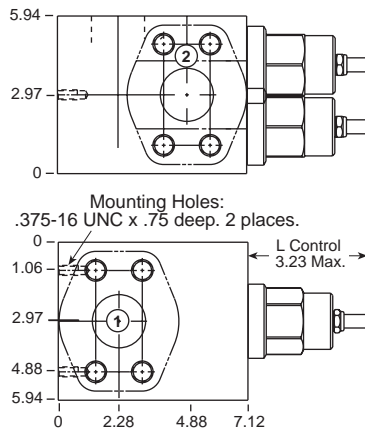
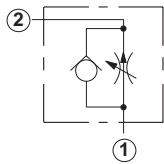
**.5-105 GPM Cavity T-18A**



Ports 1 and 2	Assembly Model Code*
2" SAE C61	<b>FDFA-LAN-XZY</b>

\*Add modifier **/S** to order Ductile Iron for pressure rating over 3000 psi.

**.5-105 GPM Cavity T-18A**



Ports 1 and 2	Assembly Model Code*
2" SAE C62	<b>FDFA-LAN-VTN</b>

\*Add modifier **/S** to order Ductile Iron for pressure rating over 3000 psi.

NOTES: Page 126 for cartridge models model FD\*\*-\*\*\* shows performance curves, technical tips, and options.  
See page vii for technical information about line mount bodies including SAE flange pattern specifications.  
Consult your local Sun Distributor or the Sun Web Site for other port sizes available in the bodies shown above.