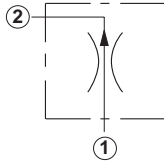
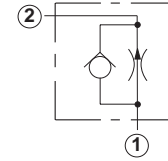
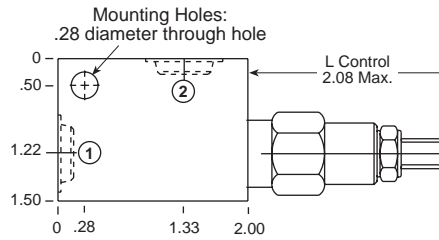
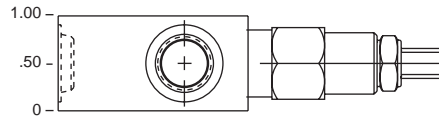


Line Mounted Assemblies

TWO PORT FLOW CONTROL APPLICATIONS
(90 DEGREE BODIES)

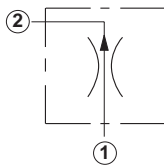
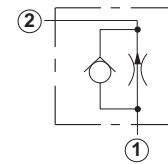
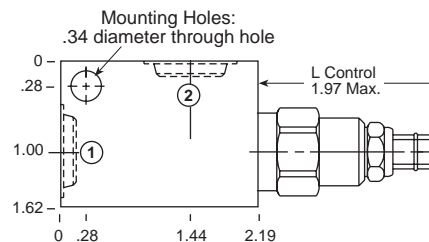
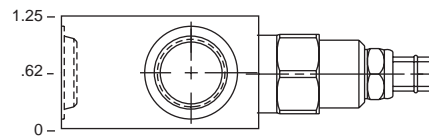
FIXED ORIFICE

Go to www.sunhydraulics.com
for more product information and pricing.FIXED ORIFICE WITH
REVERSE FREE FLOW CHECK**.1-3 GPM Cavity T-162A**

Ports 1 and 2	Assembly Model Code*
1/4" NPTF	FXBA-LAN-AAA
3/8" NPTF	FXBA-LAN-AAB
SAE-4	FXBA-LAN-AAH
SAE-6	FXBA-LAN-AAI

*Add modifier **/S** to order Ductile Iron for pressure rating over 3000 psi.

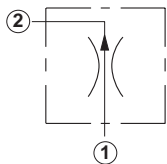
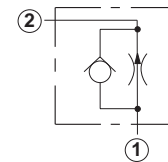
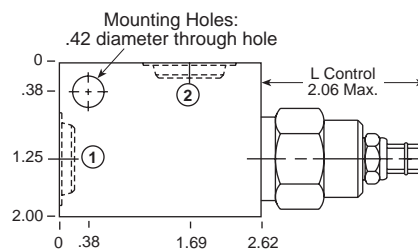
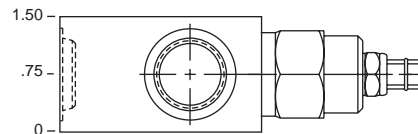
Ports 1 and 2	Assembly Model Code*
1/4" NPTF	FCBB-LAN-AAA
3/8" NPTF	FCBB-LAN-AAB
SAE-4	FCBB-LAN-AAH
SAE-6	FCBB-LAN-AAI

*Add modifier **/S** to order Ductile Iron for pressure rating over 3000 psi.**.1-6.0 GPM Cavity T-13A**

Ports 1 and 2	Assembly Model Code*
1/4" NPTF	FXCA-LAN-GAA
3/8" NPTF	FXCA-LAN-GAB
SAE-4	FXCA-LAN-GAH
SAE-6	FXCA-LAN-GAI
SAE-8	FXCA-LAN-GAJ

*Add modifier **/S** to order Ductile Iron for pressure rating over 3000 psi.

Ports 1 and 2	Assembly Model Code*
1/4" NPTF	FCCB-LAN-GAA
3/8" NPTF	FCCB-LAN-GAB
SAE-4	FCCB-LAN-GAH
SAE-6	FCCB-LAN-GAI
SAE-8	FCCB-LAN-GAJ

*Add modifier **/S** to order Ductile Iron for pressure rating over 3000 psi.**.1-12.0 GPM Cavity T-5A**

Ports 1 and 2	Assembly Model Code*
1/4" NPTF	FXDA-LAN-DAA
3/8" NPTF	FXDA-LAN-DAB
1/2" NPTF	FXDA-LAN-DAC
SAE-4	FXDA-LAN-DAI
SAE-6	FXDA-LAN-DAJ
SAE-8	FXDA-LAN-DAK

*Add modifier **/S** to order Ductile Iron for pressure rating over 3000 psi.

Ports 1 and 2	Assembly Model Code*
1/4" NPTF	FCDB-LAN-DAA
3/8" NPTF	FCDB-LAN-DAB
1/2" NPTF	FCDB-LAN-DAC
SAE-4	FCDB-LAN-DAI
SAE-6	FCDB-LAN-DAJ
SAE-8	FCDB-LAN-DAK

*Add modifier **/S** to order Ductile Iron for pressure rating over 3000 psi.

NOTES: Page 118 for cartridge models FX*A-*** and FC*B-*** shows performance curves, technical tips, and options. See page vii for technical information about line mount bodies including SAE flange pattern specifications. Consult your local Sun Distributor or the Sun Web Site for other port sizes available in the bodies shown above. Model Codes printed in red are Preferred Products and are readily available.

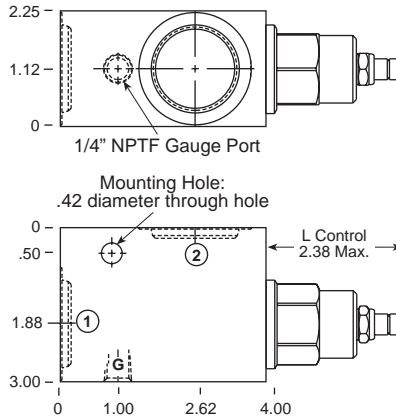
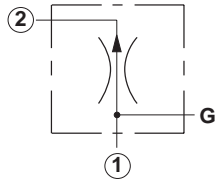
**TWO PORT FLOW CONTROL APPLICATIONS
(90 DEGREE BODIES)**

FIXED ORIFICE

Go to www.sunhydraulics.com for more product information and pricing.

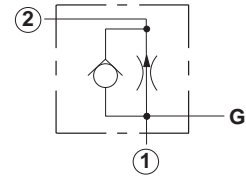
FIXED ORIFICE WITH REVERSE FREE FLOW CHECK

.2-25 GPM Cavity T-16A



Ports 1 and 2	Assembly Model Code*
3/4" NPTF	FXEA-LAN-IAD
1" NPTF	FXEA-LAN-IAE
1 1/4" NPTF	FXEA-LAN-IAF
SAE-12	FXEA-LAN-IAL
SAE-16	FXEA-LAN-IAM

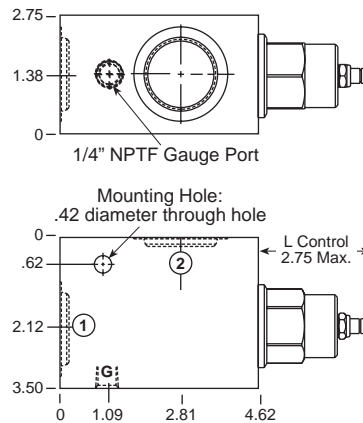
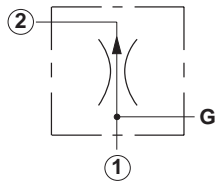
*Add modifier /S to order Ductile Iron for pressure rating over 3000 psi.



Ports 1 and 2	Assembly Model Code*
3/4" NPTF	FCEB-LAN-IAD
1" NPTF	FCEB-LAN-IAE
1 1/4" NPTF	FCEB-LAN-IAF
SAE-12	FCEB-LAN-IAL
SAE-16	FCEB-LAN-IAM

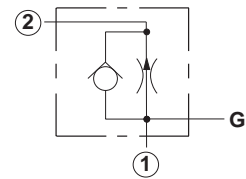
*Add modifier /S to order Ductile Iron for pressure rating over 3000 psi.

.2-50 GPM Cavity T-18A



Ports 1 and 2	Assembly Model Code*
3/4" NPTF	FXFA-LAN-LAD
1" NPTF	FXFA-LAN-LAE
1 1/4" NPTF	FXFA-LAN-LAF
SAE-12	FXFA-LAN-LAL
SAE-16	FXFA-LAN-LAM

*Add modifier /S to order Ductile Iron for pressure rating over 3000 psi.



Ports 1 and 2	Assembly Model Code*
3/4" NPTF	FCFB-LAN-LAD
1" NPTF	FCFB-LAN-LAE
1 1/4" NPTF	FCFB-LAN-LAF
SAE-12	FCFB-LAN-LAL
SAE-16	FCFB-LAN-LAM

*Add modifier /S to order Ductile Iron for pressure rating over 3000 psi.

NOTES: Page 118 for cartridge models FX*A-*** and FC*B-*** shows performance curves, technical tips, and options. See page vii for technical information about line mount bodies including SAE flange pattern specifications. Consult your local Sun Distributor or the Sun Web Site for other port sizes available in the bodies shown above. Model Codes printed in red are Preferred Products and are readily available.

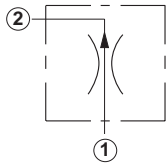
Line Mounted Assemblies

TWO PORT FLOW CONTROL APPLICATIONS (INLINE BODIES)

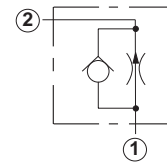
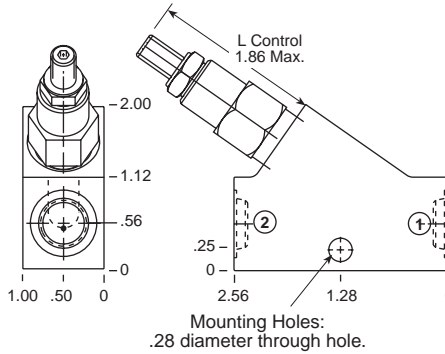
FIXED ORIFICE

Go to www.sunhydraulics.com
for more product information and pricing.

FIXED ORIFICE WITH REVERSE FREE FLOW CHECK



.1-3 GPM Cavity T-162A

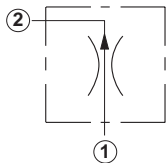


Ports 1 and 2	Assembly Model Code*
1/4" NPTF	FXBA-LAN-ACA
3/8" NPTF	FXBA-LAN-ACB
SAE-4	FXBA-LAN-ACH
SAE-6	FXBA-LAN-ACI

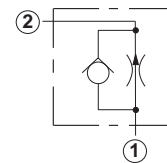
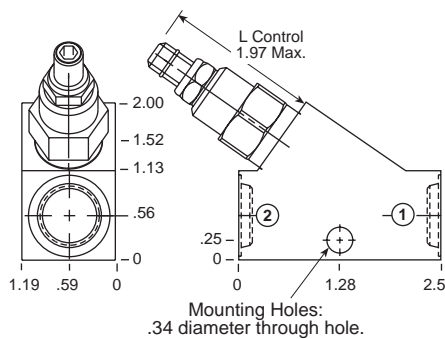
Ports 1 and 2	Assembly Model Code*
1/4" NPTF	FCBB-LAN-ACA
3/8" NPTF	FCBB-LAN-ACB
SAE-4	FCBB-LAN-ACH
SAE-6	FCBB-LAN-ACI

*Add modifier /S to order Ductile Iron for pressure rating over 3000 psi.

*Add modifier /S to order Ductile Iron for pressure rating over 3000 psi.



.1-6.0 GPM Cavity T-13A

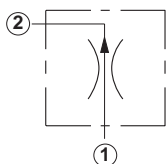


Ports 1 and 2	Assembly Model Code*
1/4" NPTF	FXCA-LAN-GCA
3/8" NPTF	FXCA-LAN-GCB
SAE-4	FXCA-LAN-GCH
SAE-6	FXCA-LAN-GCI
SAE-8	FXCA-LAN-GCJ

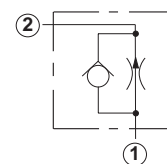
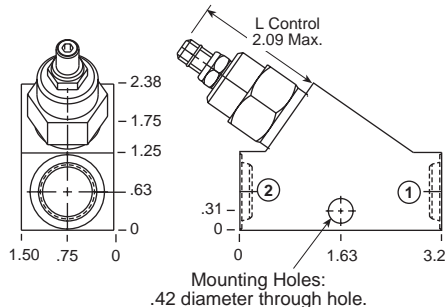
Ports 1 and 2	Assembly Model Code*
1/4" NPTF	FCCB-LAN-GCA
3/8" NPTF	FCCB-LAN-GCB
SAE-4	FCCB-LAN-GCH
SAE-6	FCCB-LAN-GCI
SAE-8	FCCB-LAN-GCJ

*Add modifier /S to order Ductile Iron for pressure rating over 3000 psi.

*Add modifier /S to order Ductile Iron for pressure rating over 3000 psi.



.1-12.0 GPM Cavity T-5A



Ports 1 and 2	Assembly Model Code*
3/8" NPTF	FXDA-LAN-DCB
1/2" NPTF	FXDA-LAN-DCC
SAE-6	FXDA-LAN-DCI
SAE-8	FXDA-LAN-DCJ
SAE-10	FXDA-LAN-DCK

Ports 1 and 2	Assembly Model Code*
3/8" NPTF	FCDB-LAN-DCB
1/2" NPTF	FCDB-LAN-DCC
SAE-6	FCDB-LAN-DCI
SAE-8	FCDB-LAN-DCJ
SAE-10	FCDB-LAN-DCK

*Add modifier /S to order Ductile Iron for pressure rating over 3000 psi.

*Add modifier /S to order Ductile Iron for pressure rating over 3000 psi.

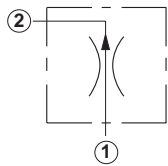
NOTES: Page 118 for cartridge models FX*A-*** and FC*B-*** shows performance curves, technical tips, and options. See page vii for technical information about line mount bodies including SAE flange pattern specifications. Consult your local Sun Distributor or the Sun Web Site for other port sizes available in the bodies shown above. Model Codes printed in red are Preferred Products and are readily available.

**TWO PORT FLOW CONTROL APPLICATIONS
(INLINE/INLINE 1.50"/2.00" SAE C61 FLANGE PORT BODIES)**

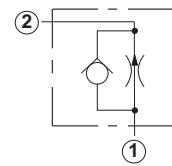
FIXED ORIFICE

Go to www.sunhydraulics.com for more product information and pricing.

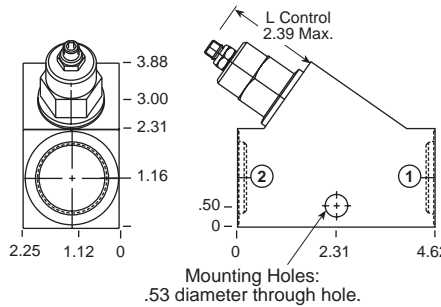
FIXED ORIFICE WITH REVERSE FREE FLOW CHECK



.2-25 GPM Cavity T-16A



Ports 1 and 2	Assembly Model Code*
3/4" NPTF	FXEA-LAN-ICD
1" NPTF	FXEA-LAN-ICE
1 1/4" NPTF	FXEA-LAN-ICF
SAE-12	FXEA-LAN-ICL
SAE-16	FXEA-LAN-ICM

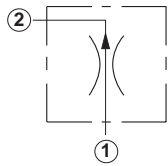


Ports 1 and 2	Assembly Model Code*
3/4" NPTF	FCBE-LAN-ICD
1" NPTF	FCBE-LAN-ICE
1 1/4" NPTF	FCBE-LAN-ICF
SAE-12	FCBE-LAN-ICL
SAE-16	FCBE-LAN-ICM

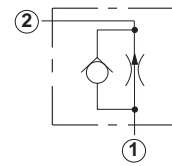
*Add modifier /S to order Ductile Iron for pressure rating over 3000 psi.

*Add modifier /S to order Ductile Iron for pressure rating over 3000 psi.

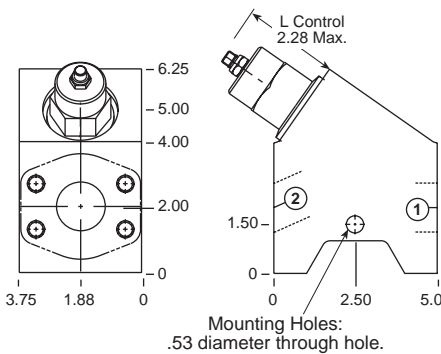
.2-50 GPM Cavity T-18A



.2-50 GPM Cavity T-18A



Ports 1 and 2	Assembly Model Code*
1 1/2" SAE C61	FXFA-LAN-ZLS

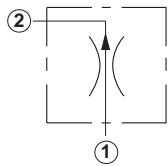


Ports 1 and 2	Assembly Model Code*
1 1/2" SAE C61	FCFB-LAN-ZLS

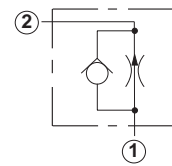
*Add modifier /S to order Ductile Iron for pressure rating over 3000 psi.

*Add modifier /S to order Ductile Iron for pressure rating over 3000 psi.

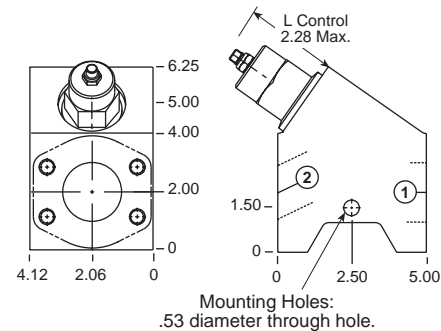
.2-50 GPM Cavity T-18A



.2-50 GPM Cavity T-18A



Ports 1 and 2	Assembly Model Code*
2" SAE C61	FXFA-LAN-ZLR



Ports 1 and 2	Assembly Model Code*
2" SAE C61	FCFB-LAN-ZLR

*Add modifier /S to order Ductile Iron for pressure rating over 3000 psi.

*Add modifier /S to order Ductile Iron for pressure rating over 3000 psi.

NOTES: Page 118 for cartridge models FX*A-*** and FC*B-*** shows performance curves, technical tips, and options. See page vii for technical information about line mount bodies including SAE flange pattern specifications. Consult your local Sun Distributor or the Sun Web Site for other port sizes available in the bodies shown above. **Model Codes printed in red are Preferred Products and are readily available.**

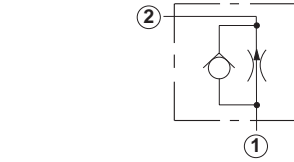
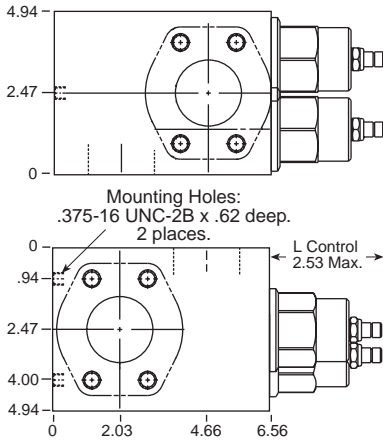
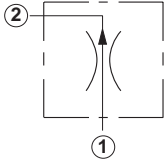
Line Mounted Assemblies

**TWO PORT FLOW CONTROL APPLICATIONS
(2.00" SAE C61/C62 FLANGE PORT BODIES, 2 PORT CAVITY IN PARALLEL)**

FIXED ORIFICE

Go to www.sunhydraulics.com for more product information and pricing.

.2-100 GPM Cavity T-18A

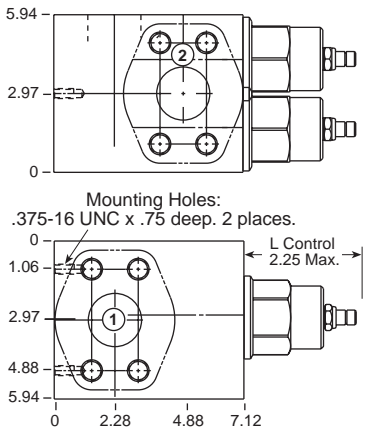
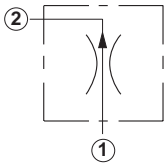


Ports 1 and 2	Assembly Model Code*
2" SAE C61	FXFA-LAN-XZY

Ports 1 and 2	Assembly Model Code*
2" SAE C61	FCFB-LAN-XZY

*Add modifier **/S** to order Ductile Iron for pressure rating over 3000 psi.

.2-100 GPM Cavity T-18A



Ports 1 and 2	Assembly Model Code*
2" SAE C62	FXFA-LAN-VTN

*Add modifier **/S** to order Ductile Iron for pressure rating over 3000 psi.

NOTES: Page 118 for cartridge models FX*A-*** and FC*B-*** shows performance curves, technical tips, and options. See page vii for technical information about line mount bodies including SAE flange pattern specifications. Consult your local Sun Distributor or the Sun Web Site for other port sizes available in the bodies shown above.