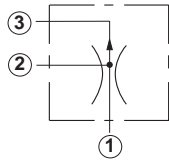


Line Mounted Assemblies

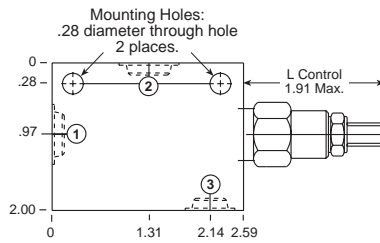
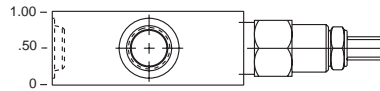
THREE PORT PRIORITY FLOW CONTROL APPLICATIONS (90 DEGREE HIGH CAPACITY PORT 3 BODIES)

**BYPASS / RESTRICTIVE
FIXED ORIFICE**

Go to www.sunhydraulics.com
for more product information and pricing.

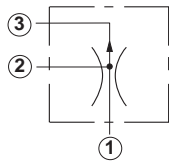


.1-3 GPM Cavity T-163A

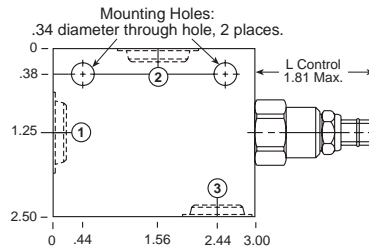
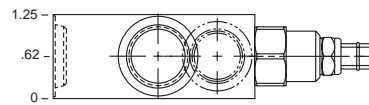


Ports 1 and 2	Port 3	Assembly Model Code*
1/4" NPTF	1/4" NPTF	FRBA-LAN-JCA
3/8" NPTF	1/4" NPTF	FRBA-LAN-JCB
SAE-4	SAE-4	FRBA-LAN-JCH
SAE-6	SAE-4	FRBA-LAN-JCI

*Add modifier /S to order Ductile Iron for pressure rating over 3000 psi.

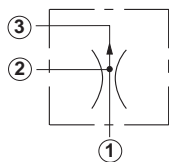


.1-6.0 GPM Cavity T-11A

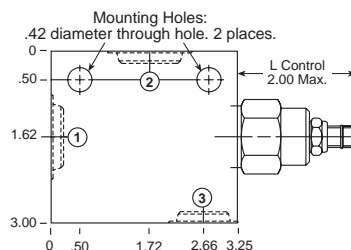
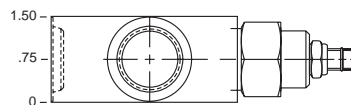


Ports 1 and 2	Port 3	Assembly Model Code*
3/8" NPTF	3/8" NPTF	FRCA-LAN-EAB
1/2" NPTF	3/8" NPTF	FRCA-LAN-EAC
SAE-8	SAE-8	FRCA-LAN-EAJ
SAE-10	SAE-8	FRCA-LAN-EAK

*Add modifier /S to order Ductile Iron for pressure rating over 3000 psi.



.1-12.0 GPM Cavity T-2A



Ports 1 and 2	Port 3	Assembly Model Code*
3/8" NPTF	3/8" NPTF	FRDA-LAN-BAB
1/2" NPTF	1/2" NPTF	FRDA-LAN-BAC
3/4" NPTF	1/2" NPTF	FRDA-LAN-BAD
SAE-8	SAE-8	FRDA-LAN-BAJ
SAE-10	SAE-10	FRDA-LAN-BAK
SAE-12	SAE-10	FRDA-LAN-BAL

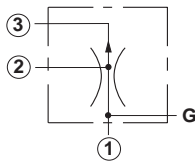
*Add modifier /S to order Ductile Iron for pressure rating over 3000 psi.

NOTES: Page 134 for cartridge model FR*A-*** shows performance curves, technical tips, and options.
See page vii for technical information about line mount bodies including SAE flange pattern specifications.
Consult your local Sun Distributor or the Sun Web Site for other port sizes available in the bodies shown above.
Model Codes printed in red are Preferred Products and are readily available.

THREE PORT PRIORITY FLOW CONTROL APPLICATIONS (90 DEGREE, HIGH CAPACITY PORT 3 BODIES)

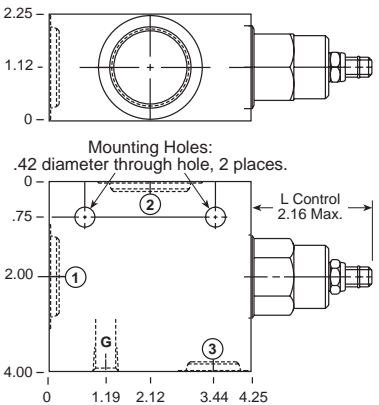
**BYPASS / RESTRICTIVE
FIXED ORIFICE**

Go to www.sunhydraulics.com
for more product information and pricing.



.2-25 GPM Cavity T-17A

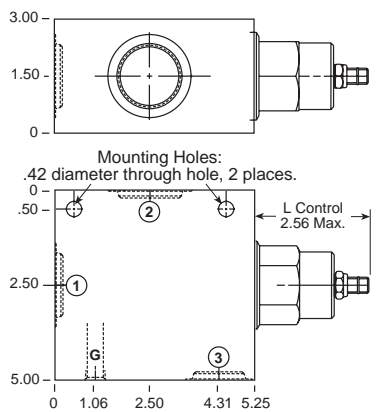
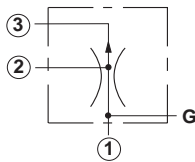
Ports 1 and 2	Port 3	Assembly Model Code*
3/4" NPTF	3/4" NPTF	FREA-LAN-HED
1" NPTF	3/4" NPTF	FREA-LAN-HEE
1 1/4" NPTF	3/4" NPTF	FREA-LAN-HEF
SAE-12	SAE-12	FREA-LAN-HEL
SAE-16	SAE-12	FREA-LAN-HEM



*Add modifier /S to order Ductile Iron for pressure rating over 3000 psi.

.2-50 GPM Cavity T-19A

Ports 1 and 2	Port 3	Assembly Model Code*
1" NPTF	1" NPTF	FRFA-LAN-KEE
1 1/4" NPTF	1" NPTF	FRFA-LAN-KEF
SAE-20	SAE-16	FRFA-LAN-KEN



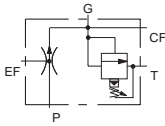
*Add modifier /S to order Ductile Iron for pressure rating over 3000 psi.

NOTES: Page 134 for cartridge model FR*A-*** shows performance curves, technical tips, and options.
See page vii for technical information about line mount bodies including SAE flange pattern specifications.
Consult your local Sun Distributor or the Sun Web Site for other port sizes available in the bodies shown above.
Model Codes printed in red are Preferred Products and are readily available.

Line Mounted Assemblies

THREE PORT PRESSURE-COMPENSATED PRIORITY FLOW CONTROL APPLICATIONS (RELIEF ON CONTROLLED PORT BODIES)

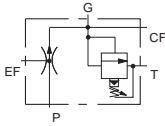
UP TO 6.5 GPM
PRIORITY FLOW



Ports (EF) Excess Flow & (P) Pump	Ports (CF) Control Flow & (T) Tank	Assembly Model Code*
1/4" NPTF	1/4" NPTF	YRDR-LAN-LA
3/8" NPTF	3/8" NPTF	YRDR-LAN-LB
1/2" NPTF	3/8" NPTF	YRDR-LAN-LC
SAE-6	SAE-6	YRDR-LAN-LI
SAE-8	SAE-8	YRDR-LAN-LJ
SAE-10	SAE-8	YRDR-LAN-LK

*Add modifier /S to order Ductile Iron for pressure rating over 3000 psi.

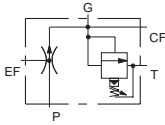
UP TO 12.5 GPM
PRIORITY FLOW



Ports (EF) Excess Flow & (P) Pump	Ports (CF) Control Flow & (T) Tank	Assembly Model Code*
1/2" NPTF	1/2" NPTF	YREM-LAN-LC
3/4" NPTF	1/2" NPTF	YREM-LAN-LD
SAE-10	SAE-10	YREM-LAN-LK
SAE-12	SAE-10	YREM-LAN-LL

*Add modifier /S to order Ductile Iron for pressure rating over 3000 psi.

UP TO 25 GPM
PRIORITY FLOW

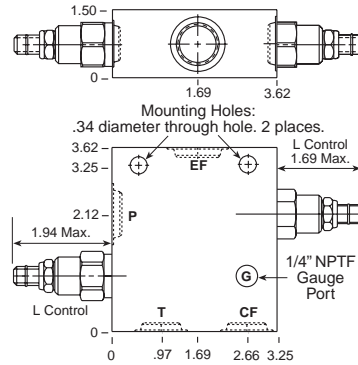


Ports (EF) Excess Flow & (P) Pump	Ports (CF) Control Flow & (T) Tank	Assembly Model Code*
3/4" NPTF	3/4" NPTF	YRFF-LAN-LD
1" NPTF	3/4" NPTF	YRFF-LAN-LE
1 1/4" NPTF	3/4" NPTF	YRFF-LAN-LF
SAE-12	SAE-12	YRFF-LAN-LL
SAE-16	SAE-12	YRFF-LAN-LM

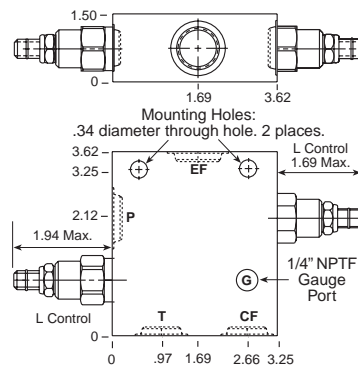
*Add modifier /S to order Ductile Iron for pressure rating over 3000 psi.

Go to www.sunhydraulics.com for more product information and pricing.

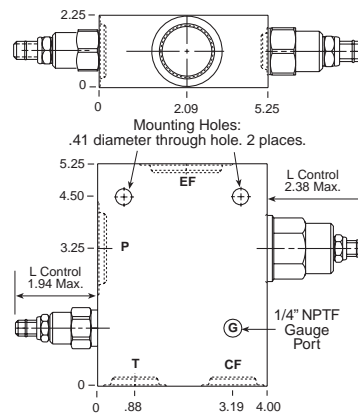
.1-6.0 GPM Cavity T-11A



.1-12.0 GPM Cavity T-2A



.2-25 GPM Cavity T-17A



NOTES: Page 134 for cartridge model FR*A-*** shows performance curves, technical tips, and options.
See page vii for technical information about line mount bodies including SAE flange pattern specifications.
Consult your local Sun Distributor or the Sun Web Site for other port sizes available in the bodies shown above.