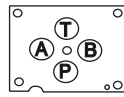


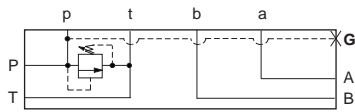
ISO 03 / CETOP 3 RELIEF VALVES
(SIDE PORTED SUBPLATE / REAR PORTED SUBPLATE / SIDE PORTED SUBPLATE WITH P AND T IN BASE)

T-10A Cavity

All subplates shown below are 3.5" wide.

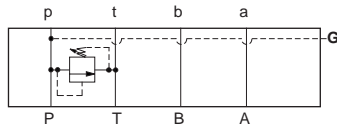


PILOT OPERATED



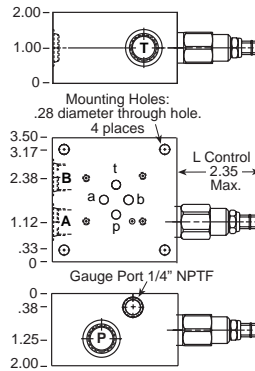
Ports A, B, P, T	Assembly Model Code*
3/8" NPTF	RPEC-LAN-FSB
SAE-8	RPEC-LAN-FSJ

*Add modifier **/S** to order Ductile Iron for pressure rating over 3000 psi.



Ports A, B, P, T	Assembly Model Code*
3/8" NPTF	RPEC-LAN-FRB
SAE-8	RPEC-LAN-FRJ

*Add modifier **/S** to order Ductile Iron for pressure rating over 3000 psi.



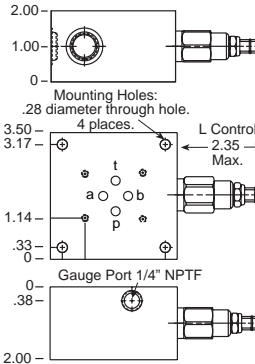
DIRECT ACTING

Function

P to T

Ports A, B, P, T	Assembly Model Code*
3/8" NPTF	RDDA-LAN-FSB
SAE-8	RDDA-LAN-FSJ

*Add modifier **/S** to order Ductile Iron for pressure rating over 3000 psi.



Function

P to T

Ports A, B, P, T	Assembly Model Code*
3/8" NPTF	RDDA-LAN-FRB
SAE-8	RDDA-LAN-FRJ

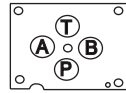
*Add modifier **/S** to order Ductile Iron for pressure rating over 3000 psi.

NOTES: Page 2 for cartridge models RP*C-*** and RD*A-*** show performance curves, technical tips, and options.
 See page 140 for technical information about sandwich bodies including ISO interface patterns, mounting instructions, studrods, and studkits.
 Go to www.sunhydraulics.com for more product information and pricing.
 Model Codes printed in red are Preferred Products and are readily available.

Sandwich Assemblies

ISO 03 / CETOP 3 RELIEF VALVES

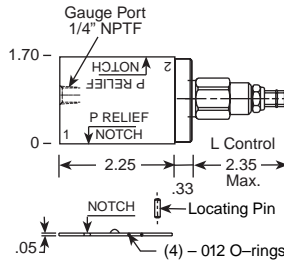
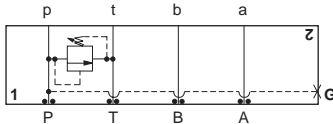
T-10A Cavity



All sandwich bodies shown below are 1.75" wide

PILOT OPERATED

DIRECT ACTING



Function

P to T

Assembly Model Code*

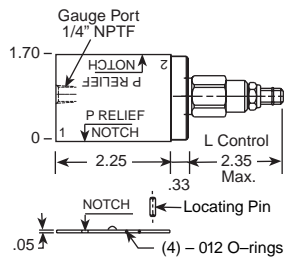
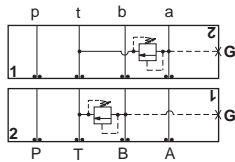
RPEC-LAN-FBP

*Add modifier **/S** to order Ductile Iron for pressure rating over 3000 psi.

Assembly Model Code*

RDDA-LAN-FBP

*Add modifier **/S** to order Ductile Iron for pressure rating over 3000 psi.



Function

A to T (High Capacity)

B to T (High Capacity)

Assembly Model Code*

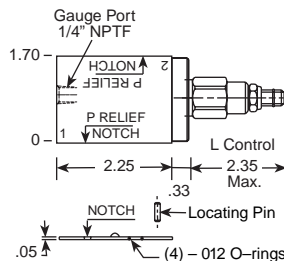
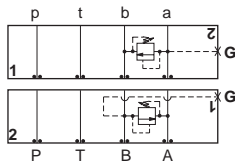
RPEC-LAN-FBA

*Add modifier **/S** to order Ductile Iron for pressure rating over 3000 psi.

Assembly Model Code*

RDDA-LAN-FBA

*Add modifier **/S** to order Ductile Iron for pressure rating over 3000 psi.



Function

A to B (High Capacity)

B to A (High Capacity)

Assembly Model Code*

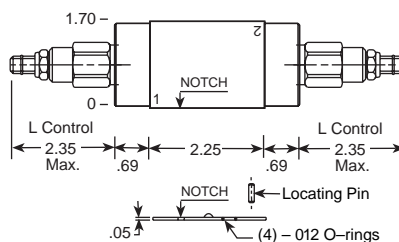
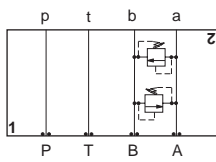
RPEC-LAN-FBC

*Add modifier **/S** to order Ductile Iron for pressure rating over 3000 psi.

Assembly Model Code*

RDDA-LAN-FBC

*Add modifier **/S** to order Ductile Iron for pressure rating over 3000 psi.



Function

A to B and B to A (High Capacity) (Cross-Port)

Assembly Model Code*

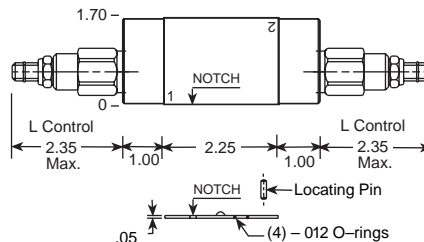
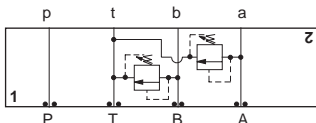
RPEC-LAN-FBY

*Add modifier **/S** to order Ductile Iron for pressure rating over 3000 psi.

Assembly Model Code*

RDDA-LAN-FBY

*Add modifier **/S** to order Ductile Iron for pressure rating over 3000 psi.



Function

A and B to T (High Capacity)

Assembly Model Code*

RPEC-LAN-FBX

*Add modifier **/S** to order Ductile Iron for pressure rating over 3000 psi.

Assembly Model Code*

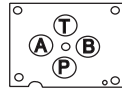
RDDA-LAN-FBX

*Add modifier **/S** to order Ductile Iron for pressure rating over 3000 psi.

NOTES: Page 2 for cartridge models RP*C-*** and RD*A-*** show performance curves, technical tips, and options. See page 140 for technical information about sandwich bodies including ISO interface patterns, mounting instructions, studrods, and studkits. Go to www.sunhydraulics.com for more product information. Model Codes printed in red are Preferred Products and are readily available.

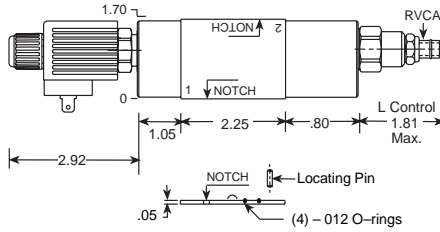
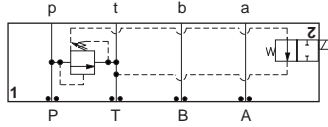
ISO 03 / CETOP 3 RELIEF VALVES, VENTED

T-11A Cavity



All sandwich bodies shown below are 1.75" wide

PILOT OPERATED

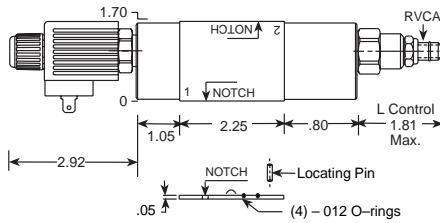
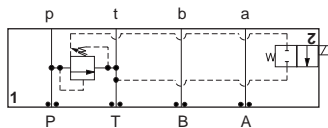


Function
P to T
(Normally Open, Solenoid Vented)

Assembly Model Code*
XRCO-LAN-HA

*Add modifier /S to order Ductile Iron for pressure rating over 3000 psi.

Operating pressure is limited to 5000 psi.
Coil must be selected separately. See page 248.

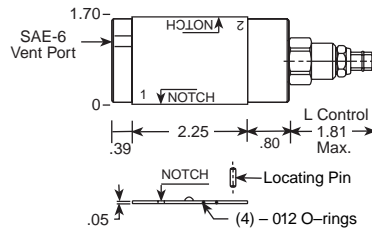
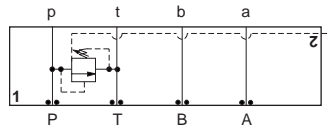


Function
P to T
(Normally Closed, Solenoid Vented)

Assembly Model Code*
XRCO-LAN-CA

*Add modifier /S to order Ductile Iron for pressure rating over 3000 psi.

Operating pressure is limited to 5000 psi.
Coil must be selected separately. See page 248.



Function
P to T (Externally Vented)

Vent Port Assembly Model Code*
SAE-6 **RVCA-LAN-EBC**

*Add modifier /S to order Ductile Iron for pressure rating over 3000 psi.

NOTES: Page 12 for cartridge model RV*A-*** show performance curves, technical tips, and options.

Select Solenoid Connector Option from Page 248.

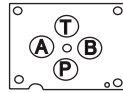
See Page 140 for technical information about sandwich bodies including ISO interface patterns, mounting instructions, studrods, and studkits.

Go to www.sunhydraulics.com for more product information.

Sandwich Assemblies

ISO 03 / CETOP 3 SEQUENCE VALVES

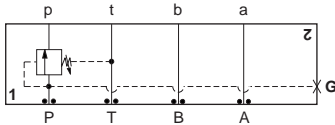
T-11A Cavity



All sandwich bodies shown below are 1.75" wide

PILOT OPERATED

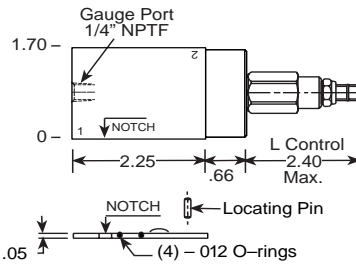
DIRECT ACTING



Assembly Model Code*

RSDC-LAN-EBW/M

*Add modifier **/S** to order Ductile Iron for pressure rating over 3000 psi.



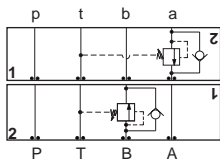
Function

In to **P**

Assembly Model Code*

SXCA-LAN-EBW

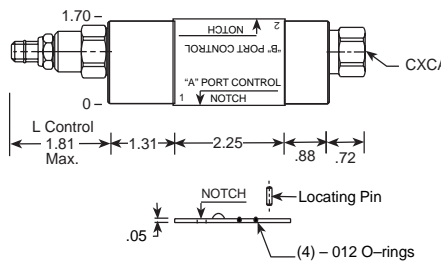
*Add modifier **/S** to order Ductile Iron for pressure rating over 3000 psi.



Assembly Model Code*

RSDC-LAN-EB4

*Add modifier **/S** to order Ductile Iron for pressure rating over 3000 psi.



Function

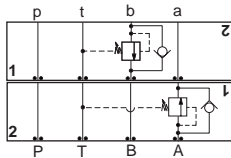
In to **A** (Reverse Free Flow Check)

Out of **B** (Reverse Free Flow Check)

Assembly Model Code*

SXCA-LAN-EB4

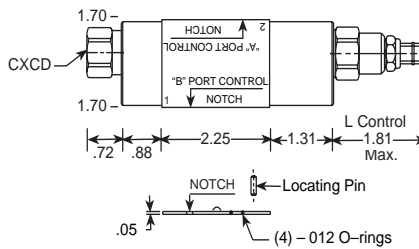
*Add modifier **/S** to order Ductile Iron for pressure rating over 3000 psi.



Assembly Model Code*

RSDC-LAN-EB5

*Add modifier **/S** to order Ductile Iron for pressure rating over 3000 psi.



Function

In to **B** (Reverse Free Flow Check)

Out of **A** (Reverse Free Flow Check)

Assembly Model Code*

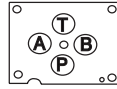
SXCA-LAN-EB5

*Add modifier **/S** to order Ductile Iron for pressure rating over 3000 psi.

NOTES: Pages 20 and 29 for cartridge models RS*C-***, SX*A-*** and SC*A-*** show performance curves, technical tips, and options. See Page 140 for technical information about sandwich bodies including ISO interface patterns, mounting instructions, studrods, and studkits. Go to www.sunhydraulics.com for more product information. Model Codes printed in red are Preferred Products and are readily available.

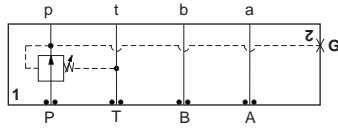
ISO 03 / CETOP 3 REDUCING VALVES

T-11A Cavity



All sandwich bodies shown below are 1.75" wide

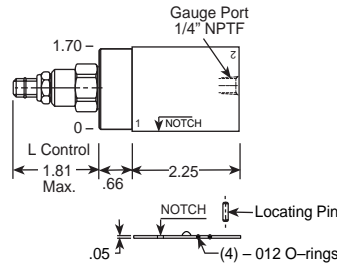
PILOT OPERATED



Assembly Model Code*

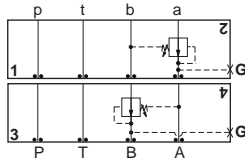
PBDB-LAN-EBP

*Add modifier /S to order Ductile Iron for pressure rating over 3000 psi.



Function

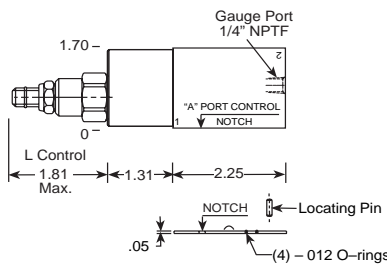
On P Drained to T



Assembly Model Code*

PBDB-LAN-EBA

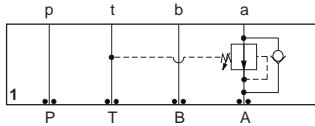
*Add modifier /S to order Ductile Iron for pressure rating over 3000 psi.



Function

On A Drained to B

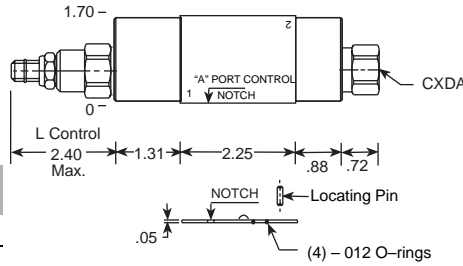
On B Drained to A



Assembly Model Code*

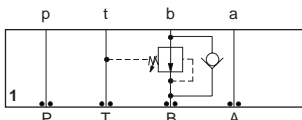
PBDB-LAN-EB2

*Add modifier /S to order Ductile Iron for pressure rating over 3000 psi.



Function

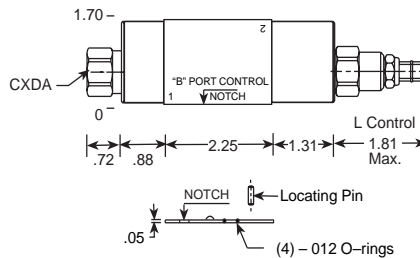
On A Drain to T
(Reverse Free Flow Check)



Assembly Model Code*

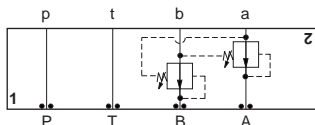
PBDB-LAN-EB3

*Add modifier /S to order Ductile Iron for pressure rating over 3000 psi.



Function

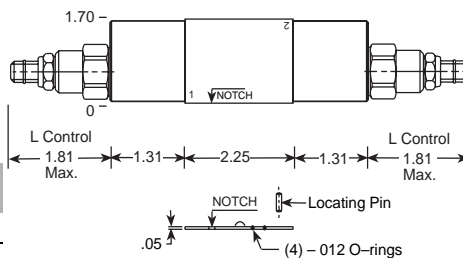
On B Drain to T
(Reverse Free Flow Check)



Assembly Model Code*

PBDB-LAN-EBY

*Add modifier /S to order Ductile Iron for pressure rating over 3000 psi.



Function

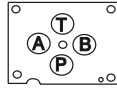
On A and B
(Drains to Opposite Port)

NOTES: Page 34 for cartridge model PB*B-*** show performance curves, technical tips, and options.
See Page 140 for technical information about sandwich bodies including ISO interface patterns, mounting instructions, studrods, and studkits.
Go to www.sunhydraulics.com for more product information.
Model Codes printed in red are Preferred Products and are readily available.

Sandwich Assemblies

ISO 03 / CETOP 3 REDUCING / RELIEVING VALVES

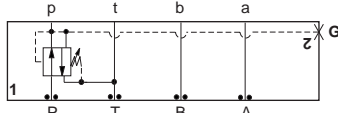
T-11A Cavity



All sandwich bodies shown below are 1.75" wide

PILOT OPERATED

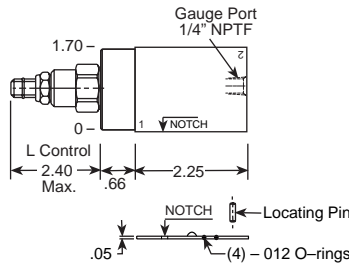
DIRECT ACTING



Assembly Model Code*

PPDB-LAN-EBP

*Add modifier /S to order Ductile Iron for pressure rating over 3000 psi.



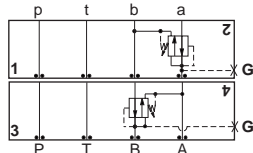
Function

On P Tank to T, Drained at T

Assembly Model Code*

PRDB-LAN-EBP

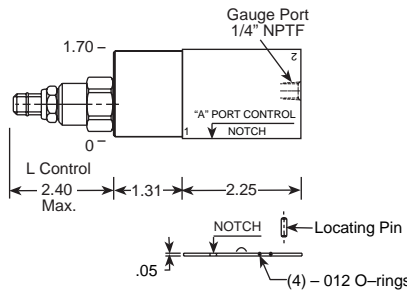
*Add modifier /S to order Ductile Iron for pressure rating over 3000 psi.



Assembly Model Code*

PPDB-LAN-EBA

*Add modifier /S to order Ductile Iron for pressure rating over 3000 psi.



Function

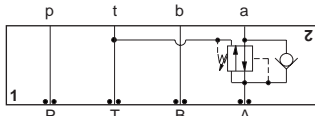
On A Tank to B

On B Tank to A

Assembly Model Code*

PRDB-LAN-EBA

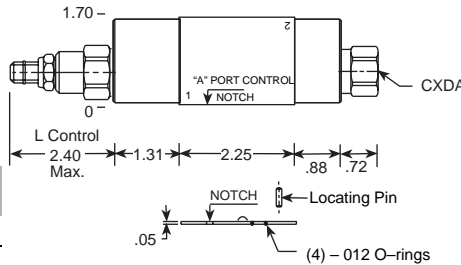
*Add modifier /S to order Ductile Iron for pressure rating over 3000 psi.



Assembly Model Code*

PPDB-LAN-EB2

*Add modifier /S to order Ductile Iron for pressure rating over 3000 psi.



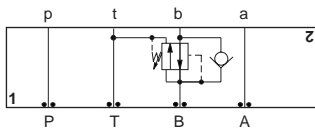
Function

On A Tank to T
(Reverse Free Flow Check)

Assembly Model Code*

PRDB-LAN-EB2

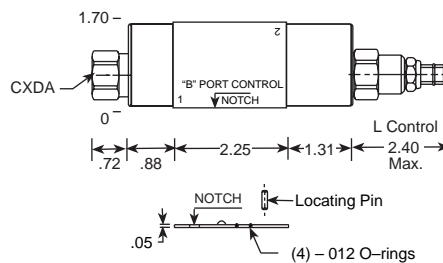
*Add modifier /S to order Ductile Iron for pressure rating over 3000 psi.



Assembly Model Code*

PPDB-LAN-EB3

*Add modifier /S to order Ductile Iron for pressure rating over 3000 psi.



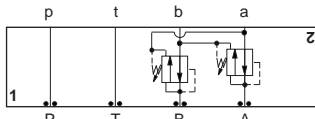
Function

On B Tank to T, Drained to T
(Reverse Free Flow Check)

Assembly Model Code*

PRDB-LAN-EB3

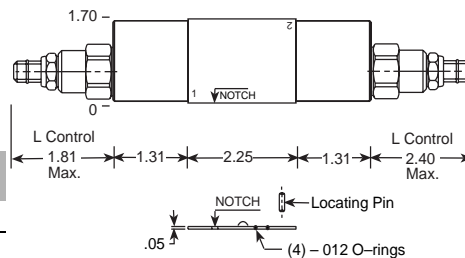
*Add modifier /S to order Ductile Iron for pressure rating over 3000 psi.



Assembly Model Code*

PPDB-LAN-EBY

*Add modifier /S to order Ductile Iron for pressure rating over 3000 psi.



Function

On A and B Tanks and Drains to Opposite Port

Assembly Model Code*

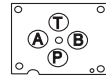
PRDB-LAN-EBY

*Add modifier /S to order Ductile Iron for pressure rating over 3000 psi.

NOTES: Page 42 for cartridge models PP*B-*** and PR*B-*** show performance curves, technical tips, and options. See Page 140 for technical information about sandwich bodies including ISO interface patterns, mounting instructions, studrods, and studkits. Go to www.sunhydraulics.com for more product information. Model Codes printed in red are Preferred Products and are readily available.

ISO 03 / CETOP 3 COUNTERBALANCE / VENTED COUNTERBALANCE VALVES

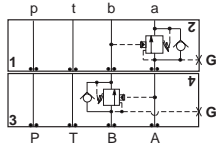
T-11A / T21A Cavity



All sandwich bodies shown below are 1.75" wide

PILOT RATIOS
3:1 and 1.5:1 (CB**) and 3:1 and 1:1 (CW**)

PILOT RATIOS
2.3:1, 4.5:1 and 10:1 (CB**) and 5:1 and 2:1 (CW**)



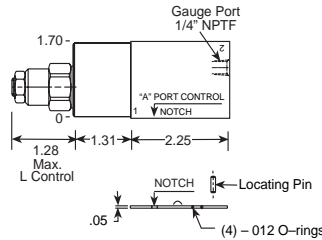
Assembly Model Code*
CBC*-LHN-EBA

*The 4th digit of the Model Code must be entered to specify counterbalance pilot ratio. Add modifier /S to order Ductile Iron for pressure rating over 3000 psi.

STANDARD

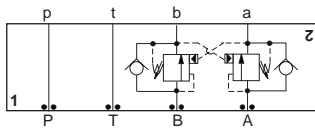
Function

On A Pilot from B
On B Pilot from A



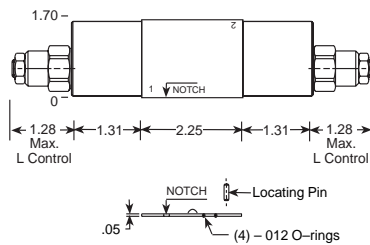
Assembly Model Code*
CBC*-LJN-EBA

*The 4th digit of the Model Code must be entered to specify counterbalance pilot ratio. Add modifier /S to order Ductile Iron for pressure rating over 3000 psi.



Assembly Model Code*
CBC*-LHN-EBY

*The 4th digit of the Model Code must be entered to specify counterbalance pilot ratio. Add modifier /S to order Ductile Iron for pressure rating over 3000 psi.

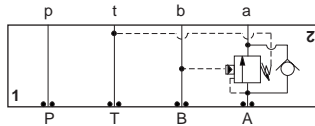


On A and B (Cross-Piloted)

Assembly Model Code*
CBC*-LJN-EBY

*The 4th digit of the Model Code must be entered to specify counterbalance pilot ratio. Add modifier /S to order Ductile Iron for pressure rating over 3000 psi.

Function



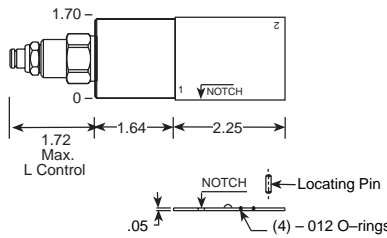
Assembly Model Code*
CWC*-LHN-MBA

*The 4th digit of the Model Code must be entered to specify counterbalance pilot ratio. Add modifier /S to order Ductile Iron for pressure rating over 3000 psi.

VENTED

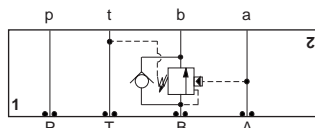
Function

On A Pilot from B, Vent to T



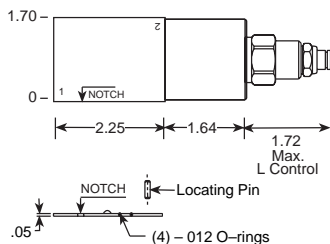
Assembly Model Code*
CWC*-LGN-MBA

*The 4th digit of the Model Code must be entered to specify counterbalance pilot ratio. Add modifier /S to order Ductile Iron for pressure rating over 3000 psi.



Assembly Model Code*
CWC*-LHN-MBB

*The 4th digit of the Model Code must be entered to specify counterbalance pilot ratio. Add modifier /S to order Ductile Iron for pressure rating over 3000 psi.

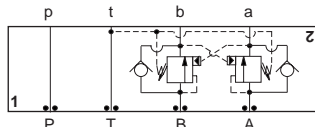


On B Pilot from A, Vent to T

Assembly Model Code*
CWC*-LGN-MBB

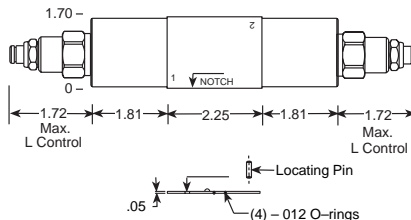
*The 4th digit of the Model Code must be entered to specify counterbalance pilot ratio. Add modifier /S to order Ductile Iron for pressure rating over 3000 psi.

Function



Assembly Model Code*
CWC*-LHN-MBY

*The 4th digit of the Model Code must be entered to specify counterbalance pilot ratio. Add modifier /S to order Ductile Iron for pressure rating over 3000 psi.



On A and B
(Cross-Piloted, vents to T)

Assembly Model Code*
CWC*-LGN-MBY

*The 4th digit of the Model Code must be entered to specify counterbalance pilot ratio. Add modifier /S to order Ductile Iron for pressure rating over 3000 psi.

Function

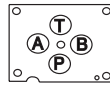
NOTES: Page 50 for cartridge model CB**_*** and page 70 for cartridge model CW**_*** show performance curves, technical tips, and options. See Page 140 for technical information about sandwich bodies including ISO interface patterns, mounting instructions, studrods, and studkits. Go to www.sunhydraulics.com for more product information. Model Codes printed in red are Preferred Products and are readily available.

Sandwich Assemblies

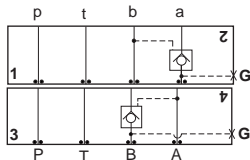
ISO 03 / CETOP 3 PILOT-TO-OPEN CHECK VALVES

T-11A / T-21A Cavity

All sandwich bodies shown below are 1.75" wide



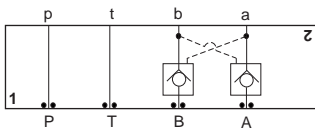
PILOT OPERATED



Assembly Model Code*

CKCB-XCN-EBA

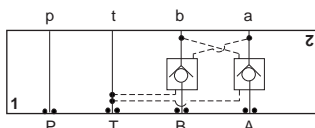
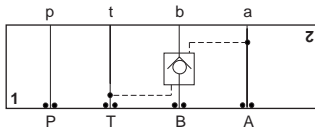
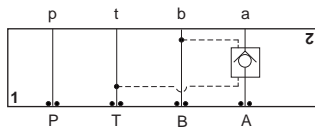
*Add modifier /S to order Ductile Iron for pressure rating over 3000 psi.



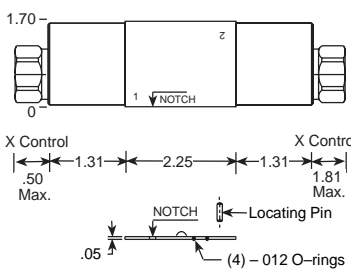
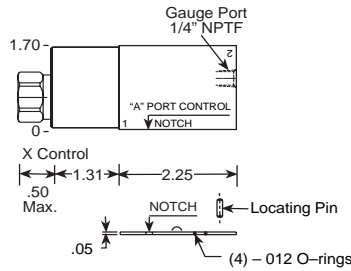
Assembly Model Code*

CKCB-XCN-EBY

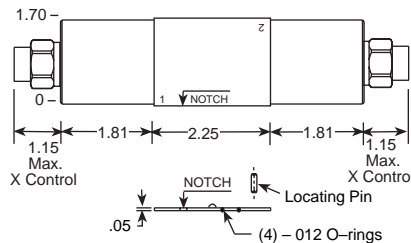
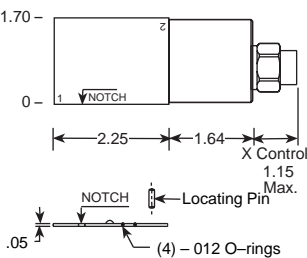
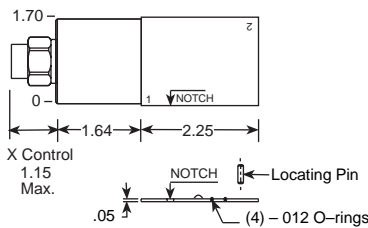
*Add modifier /S to order Ductile Iron for pressure rating over 3000 psi.



STANDARD



VENTED



Function

On A Pilot from B

On B Pilot from A

Function

On A and B (Cross-Piloted)

Function

On A Pilot from B Vent to T

Assembly Model Code*

CVCV-XCN-MBA

*Add modifier /S to order Ductile Iron for pressure rating over 3000 psi.

Function

On B Pilot from A, Vent to T

Assembly Model Code*

CVCV-XCN-MBB

*Add modifier /S to order Ductile Iron for pressure rating over 3000 psi.

Function

On A and B Cross-Piloted, Vents to T

Assembly Model Code*

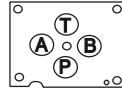
CVCV-XCN-MBY

*Add modifier /S to order Ductile Iron for pressure rating over 3000 psi.

NOTES: Page 78 for cartridge models CK**_*** and page 94 for cartridge model CV*V_*** show performance curves, technical tips, and options. See Page 140 for technical information about sandwich bodies including ISO interface patterns, mounting instructions, studrods, and studkits. Go to www.sunhydraulics.com for more product information. Model Codes printed in red are Preferred Products and are readily available.

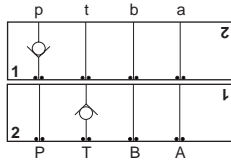
ISO 03 / CETOP 3 CHECK VALVES

T-13A / T-5A Cavity



All sandwich bodies shown below are 1.75" wide

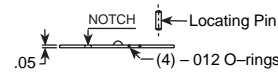
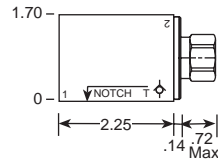
FREE FLOW PORT 1 TO 2



Assembly Model Code*

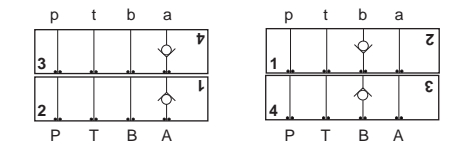
CXDA-XCN-GDP

*Add modifier /S to order Ductile Iron for pressure rating over 3000 psi.



Function

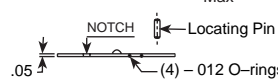
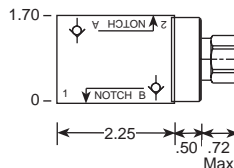
On P
On T



Assembly Model Code*

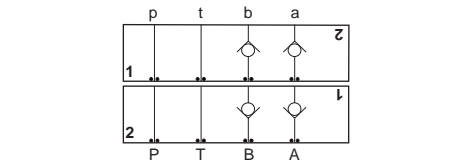
CXDA-XCN-GDA

*Add modifier /S to order Ductile Iron for pressure rating over 3000 psi.



Function

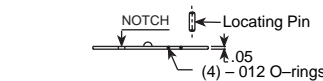
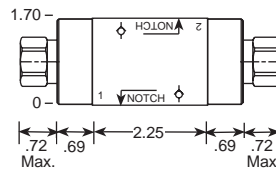
On A Free Flow Into Valve
On A Free Flow Out Valve
On B Free Flow Into Valve
On B Free Flow Out Valve



Assembly Model Code*

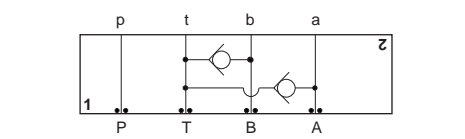
CXDA-XCN-GDY

*Add modifier /S to order Ductile Iron for pressure rating over 3000 psi.



Function

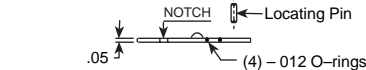
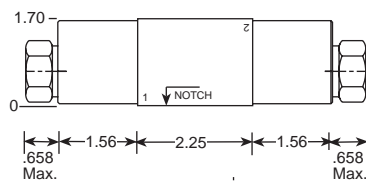
On A and B, Free Flow Out of Valve
On A and B, Free Flow Into Valve



Assembly Model Code*

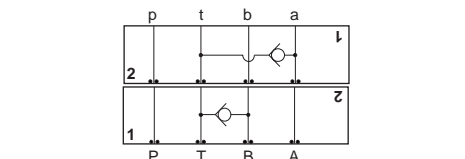
CXFA-XAN-GDF

*Add modifier /S to order Ductile Iron for pressure rating over 3000 psi.



Function

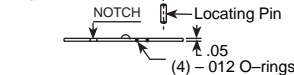
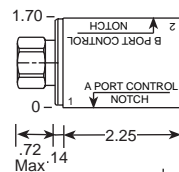
T to A and B (High Capacity)



Assembly Model Code*

CXDA-XAN-GDW

*Add modifier /S to order Ductile Iron for pressure rating over 3000 psi.



Function

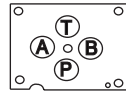
T to A
T to B

NOTES: Page 102 for cartridge models CX*A-*** and CX*D-*** show performance curves, technical tips, and options. See Page 140 for technical information about sandwich bodies including ISO interface patterns, mounting instructions, studrods, and studkits. Go to www.sunhydraulics.com for more product information. Model Codes printed in red are Preferred Products and are readily available.

Sandwich Assemblies

ISO 03 / CETOP 3 FLOW CONTROL / PRIORITY FLOW CONTROL VALVES

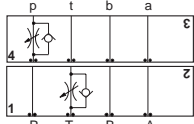
T-13A / T-11A Cavity



All sandwich bodies shown below are 1.75" wide

FULLY ADJUSTABLE NEEDLE

**FULLY ADJUSTABLE NEEDLE
PRESSURE COMPENSATED
WITH REVERSE FREE FLOW CHECK**

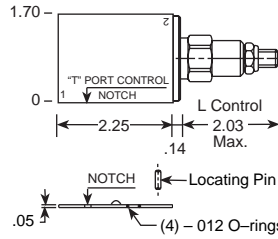


Note: Reverse Checks on FDBA-LAN-GBP Only

Assembly Model Code*

NFCC-LCN-GBP

*Add modifier /S to order Ductile Iron for pressure rating over 3000 psi.



Function

Meter-In **P**

Meter-Out **T**

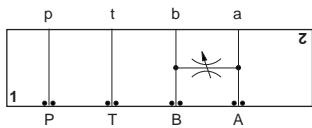
Assembly Model Code*

FDBA-LAN-GBP

*Add modifier /S to order Ductile Iron for pressure rating over 3000 psi.

Function

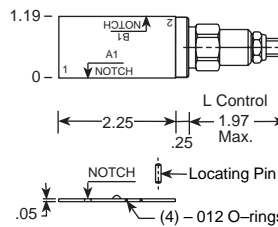
Bleed-Off **A to B** and **B to A**



Assembly Model Code*

NFCC-LCN-GBS

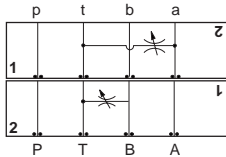
*Add modifier /S to order Ductile Iron for pressure rating over 3000 psi.



Function

Bleed-Off **A to T**

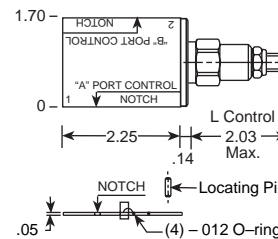
Bleed-Off **B to T**



Assembly Model Code*

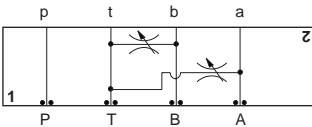
NFCC-LCN-GBW

*Add modifier /S to order Ductile Iron for pressure rating over 3000 psi.



Function

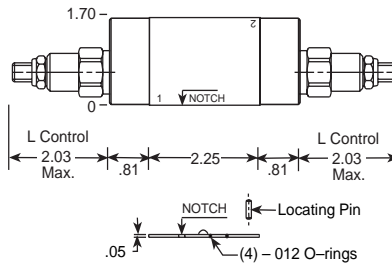
Bleed-Off **A and B to T**



Assembly Model Code*

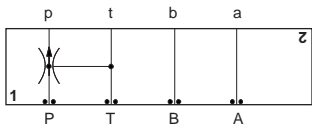
NFCC-LCN-GBX

*Add modifier /S to order Ductile Iron for pressure rating over 3000 psi.



Function

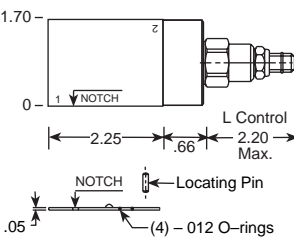
Priority Flow on **P**, Bypass to **T**



Assembly Model Code*

FRCA-LAN-WBN**

*Add modifier /S to order Ductile Iron for pressure rating over 3000 psi.

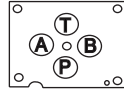


**Customer must specify priority flow.

NOTES: Page 110 for cartridge model NF*C-***, page 126 for FD*A-***, and page 134 for FR*A-*** show performance curves, technical tips, and options. See Page 140 for technical information about sandwich bodies including ISO interface patterns, mounting instructions, studrods, and studkits. Go to www.sunhydraulics.com for more product information. Model Codes printed in red are Preferred Products and are readily available.

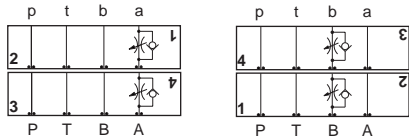
ISO 03 / CETOP 3 FLOW CONTROL VALVES

T-13A Cavity



All sandwich bodies shown below are 1.75" wide

FULLY ADJUSTABLE NEEDLE WITH REVERSE FREE FLOW CHECK



Assembly Model Code*

NCCB-LCN-GBA

*Add modifier /S to order Ductile Iron for pressure rating over 3000 psi.

FULLY ADJUSTABLE, PRESSURE COMPENSATED WITH FREE FLOW CHECK

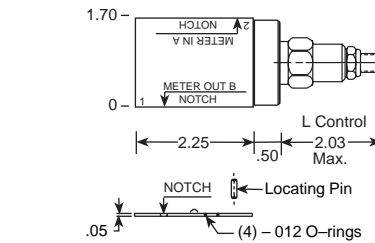
Function

Meter-In A
Meter-Out A
Meter-In B
Meter-Out B

Assembly Model Code*

FDBA-LAN-GBA

*Add modifier /S to order Ductile Iron for pressure rating over 3000 psi.



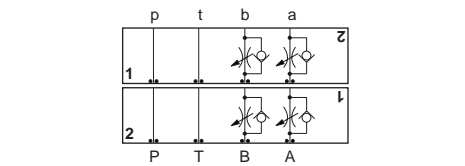
Function

Meter-In A and B
Meter-Out A and B

Assembly Model Code*

FDBA-LAN-GBY

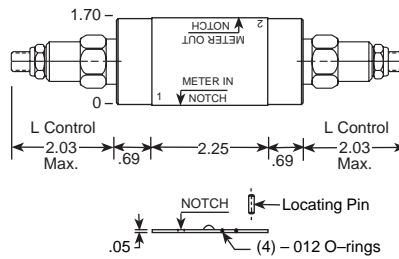
*Add modifier /S to order Ductile Iron for pressure rating over 3000 psi.



Assembly Model Code*

NCCB-LCN-GBY

*Add modifier /S to order Ductile Iron for pressure rating over 3000 psi.



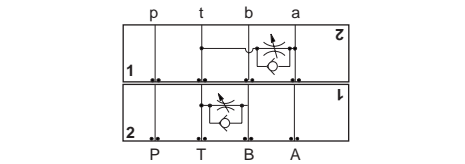
Function

Bleed-Off A to T
Bleed-Off B to T

Assembly Model Code*

FDBA-LAN-GBW

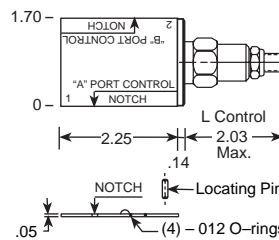
*Add modifier /S to order Ductile Iron for pressure rating over 3000 psi.



Assembly Model Code*

NCCB-LAN-GBW

*Add modifier /S to order Ductile Iron for pressure rating over 3000 psi.



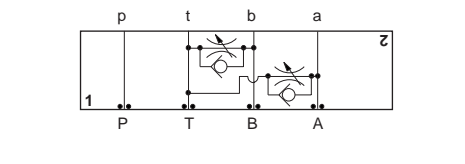
Function

Bleed-Off A and B to T

Assembly Model Code*

FDBA-LAN-GBX

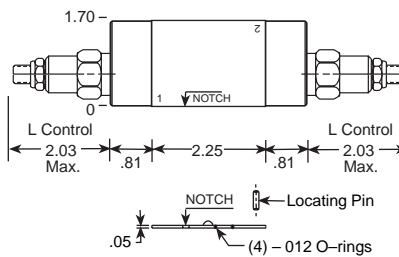
*Add modifier /S to order Ductile Iron for pressure rating over 3000 psi.



Assembly Model Code*

NCCB-LAN-GBX

*Add modifier /S to order Ductile Iron for pressure rating over 3000 psi.

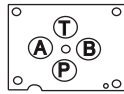


NOTES: Page 110 for cartridge model NC*B-*** and page 126 for FD*A-*** show performance curves, technical tips, and options. See Page 140 for technical information about sandwich bodies including ISO interface patterns, mounting instructions, studrods, and studkits. Go to www.sunhydraulics.com for more product information. Model Codes printed in red are Preferred Products and are readily available.

Sandwich Assemblies

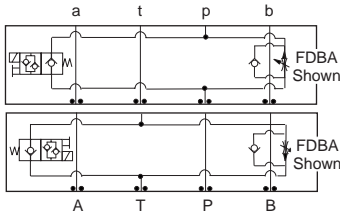
**ISO 03 / CETOP 3 FLOW CONTROL VALVES
(RAPID ADVANCE - FINE FEED)**

T-13A Cavity



All sandwich bodies shown below are 1.75" wide

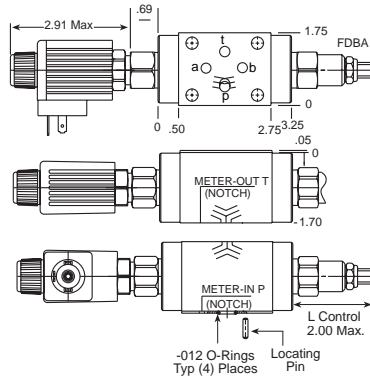
FULLY ADJUSTABLE, PRESSURE COMPENSATED WITH FREE FLOW CHECK



Assembly Model Code*

X2CD-LAN-CA

*Add modifier /S to order Ductile Iron for pressure rating over 3000 psi.



Coil must be selected separately. See page 248.

Function

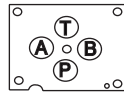
Meter-In **P**, Solenoid Normally Closed

Meter-Out **T**, Solenoid Normally Closed

NOTES: Page 126 for cartridge models FD*A-*** show performance curves, technical tips, and options. See Page 140 for technical information about sandwich bodies including ISO interface patterns, mounting instructions, studrods, and studkits. Go to www.sunhydraulics.com for more product information and pricing.

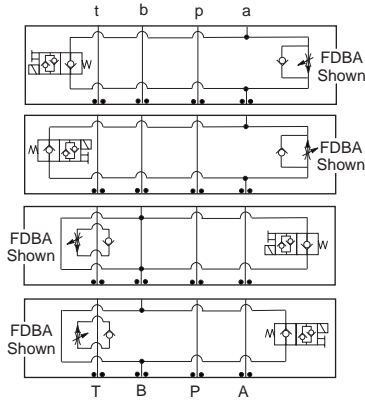
ISO 03 / CETOP 3 FLOW CONTROL VALVES (RAPID ADVANCE - FINE FEED)

T-13A Cavity



All sandwich bodies shown below are 1.75" wide

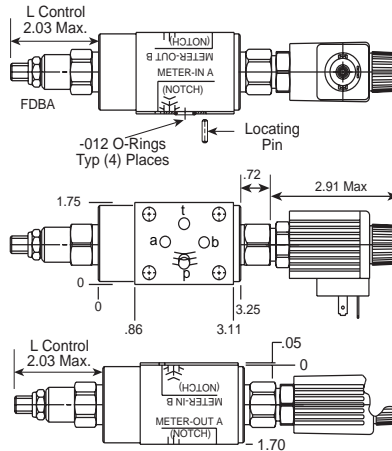
FULLY ADJUSTABLE, PRESSURE COMPENSATED WITH FREE FLOW CHECK



Assembly Model Code*

X4CD-LAN-CA

*Add modifier /S to order Ductile Iron for pressure rating over 3000 psi.



Coil must be selected separately. See page 248.

Function

Meter-In **A**, Solenoid Normally Closed

Meter-Out **A**, Solenoid Normally Closed

Meter-In **B**, Solenoid Normally Closed

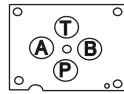
Meter-Out **B**, Solenoid Normally Closed

NOTES: Page 110 for cartridge models NF*C-*** and NC*B-*** show performance curves, technical tips, and options. See Page 140 for technical information about sandwich bodies including ISO interface patterns, mounting instructions, studrods, and studkits. Go to www.sunhydraulics.com for more product information and pricing.

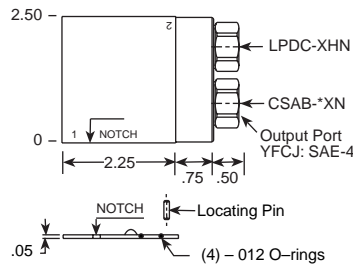
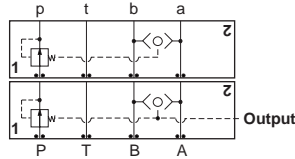
Sandwich Assemblies

**ISO 03 / CETOP 3 CIRCUIT SAVERS
(PRESSURE COMPENSATOR / REGENERATIVE / LOAD SENSING / PILOT CHOKE PACK)**

T-11A / T-13A Cavity



All sandwich bodies shown below are 1.75" wide

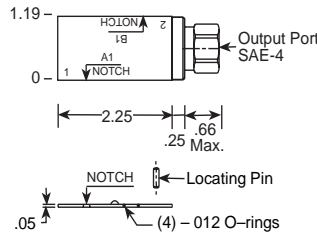
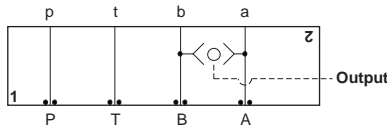


Function

YFCG: Pressure Compensator (Restrictive), 200 psi
YFCJ: Pressure Compensator (Restrictive), 200 psi with external Load-Sensing Port

External Shuttle Port	Assembly Model Code*
None	YFCG-XHN-AA
SAE-4	YFCJ-XHN-AA

*Add modifier /S to order Ductile Iron for pressure rating over 3000 psi.

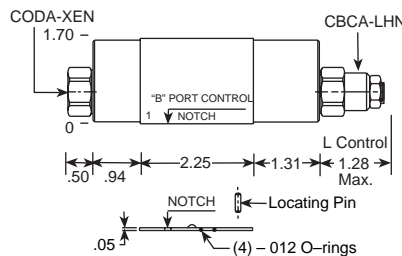
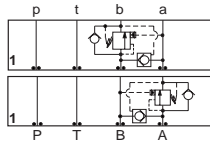


Function

Shuttle A and B (Output External)

Assembly Model Code*
CSAA-BXN-GBS

*Add modifier /S to order Ductile Iron for pressure rating over 3000 psi.

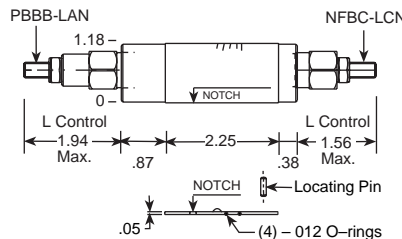
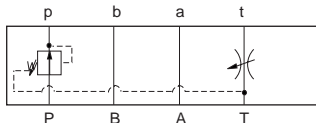


Function

B to A Pressure Sensing Regenerative Circuit
A to B Pressure Sensing Regenerative Circuit

Assembly Model Code*
YDCA-LHN-AA

*Add modifier /S to order Ductile Iron for pressure rating over 3000 psi.



Function

Pilot Choke Pack

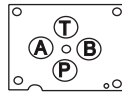
(Used typically to control main stage shift time on pilot operated ISO/CETOP directional valves.)

Assembly Model Code*
YNAA-LDN-AA

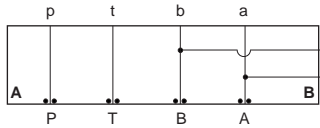
*Add modifier /S to order Ductile Iron for pressure rating over 3000 psi.

NOTES: See Page 140 for technical information about sandwich bodies including ISO interface patterns, mounting instructions, studrods, and studkits. Go to www.sunhydraulics.com for more product information. Model Codes printed in red are Preferred Products and are readily available.

ISO 03 / CETOP 3 CIRCUIT SAVERS (TAP IN MANIFOLD / ADAPTOR PLATE / COVER PLATE)

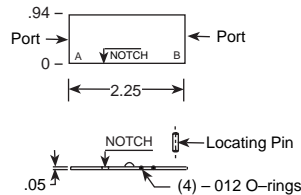


All sandwich bodies shown below are 1.75" wide



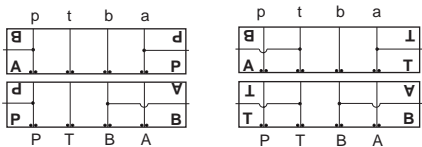
Ports A, B	Assembly Model Code*
1/4" NPTF	ZWW
SAE-4	ZUO

*Add modifier /S to order Ductile Iron for pressure rating over 3000 psi.



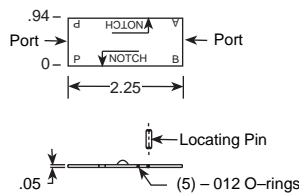
Function

A and B Tap in Manifold



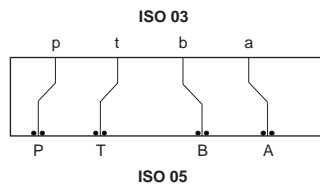
External Port	Assembly Model Code*
1/4" NPTF	ZWW
SAE-4	ZPT

*Add modifier /S to order Ductile Iron for pressure rating over 3000 psi.



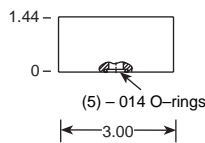
Function

P and A Tap in Manifold
P and B Tap in Manifold
T and A Tap in Manifold
T and B Tap in Manifold



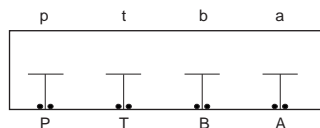
Assembly Model Code*
ZVT

*Add modifier /S to order Ductile Iron for pressure rating over 3000 psi.



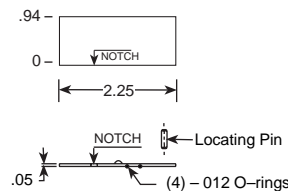
Function

Adaptor from ISO 05 to ISO 03.



Assembly Model Code*
ZJR

*Add modifier /S to order Ductile Iron for pressure rating over 3000 psi.



Function

Cover Plate with All Ports Blocked

NOTE: See Page 140 for technical information about sandwich bodies including ISO interface patterns, mounting instructions, studrods, and studkits. Go to www.sunhydraulics.com for more product information. Model Codes printed in red are Preferred Products and are readily available.