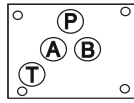


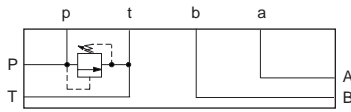
**ISO 05 / CETOP 5 RELIEF VALVES**  
**(SIDE PORTED SUBPLATE / REAR PORTED SUBPLATE / SIDE PORTED SUBPLATE WITH GASKET MOUNTED TANK PORT)**

**T-10A Cavity**



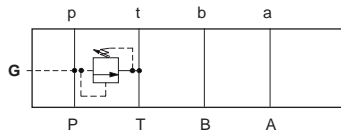
All subplates shown below are 4.5" wide

**PILOT OPERATED**



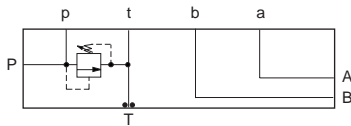
Ports A, B, P, T	Assembly Model Code*
1/2" NPTF	<b>RPEC-LAN-FSC</b>
SAE-10	<b>RPEC-LAN-FSK</b>

\*Add modifier /S to order Ductile Iron for pressure rating over 3000 psi.



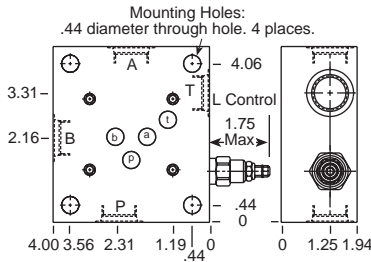
Ports A, B, P, T	Assembly Model Code*
1/2" NPTF	<b>RPEC-LAN-FRC</b>
SAE-10	<b>RPEC-LAN-FRK</b>

\*Add modifier /S to order Ductile Iron for pressure rating over 3000 psi.



Ports A, B, P, T	Assembly Model Code*
1/2" NPTF	<b>RPEC-LAN-FTC</b>
SAE-10	<b>RPEC-LAN-FTK</b>

\*Add modifier /S to order Ductile Iron for pressure rating over 3000 psi.



**DIRECT ACTING**

**Function**

**P to T**

Ports A, B, P, T	Assembly Model Code*
1/2" NPTF	<b>RDDA-LAN-FSC</b>
SAE-10	<b>RDDA-LAN-FSK</b>

\*Add modifier /S to order Ductile Iron for pressure rating over 3000 psi.

**Function**

**P to T**

Ports A, B, P, T	Assembly Model Code*
1/2" NPTF	<b>RDDA-LAN-FRC</b>
SAE-10	<b>RDDA-LAN-FRK</b>

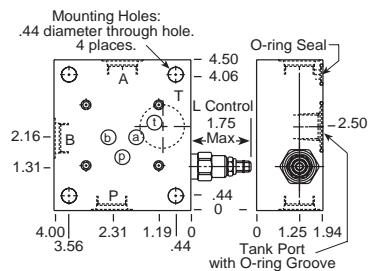
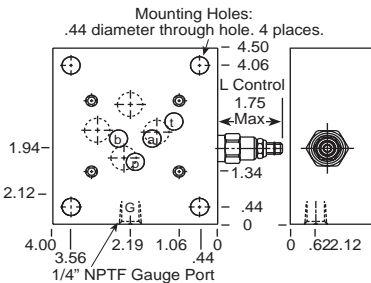
\*Add modifier /S to order Ductile Iron for pressure rating over 3000 psi.

**Function**

**P to T**

Ports A, B, P, T	Assembly Model Code*
1/2" NPTF	<b>RDDA-LAN-FTC</b>
SAE-10	<b>RDDA-LAN-FTK</b>

\*Add modifier /S to order Ductile Iron for pressure rating over 3000 psi.

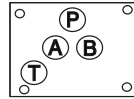


NOTES: Page 2 for cartridge models RP\*C-\*\*\* and RD\*A-\*\*\* show performance curves, technical tips, and options.  
 See page 140 for technical information about sandwich bodies including ISO interface patterns, mounting instructions, studrods, and studkits.  
 Go to [www.sunhydraulics.com](http://www.sunhydraulics.com) for more product information and pricing.  
 Model Codes printed in red are Preferred Products and are readily available.

**Sandwich Assemblies**

**ISO 05 / CETOP 5 RELIEF VALVES**

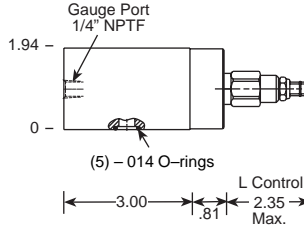
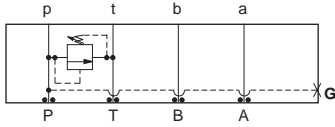
**T-10A Cavity**



All sandwich bodies shown below are 2.50" wide

**PILOT OPERATED**

**DIRECT ACTING**



**Function**

**P to T**

Assembly Model Code\*

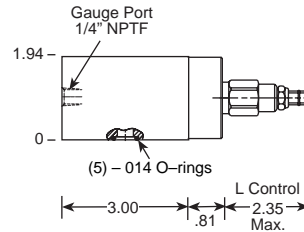
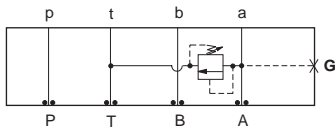
**RPEC-LAN-CBE**

\*Add modifier /S to order Ductile Iron for pressure rating over 3000 psi.

Assembly Model Code\*

**RDDA-LAN-CBE**

\*Add modifier /S to order Ductile Iron for pressure rating over 3000 psi.



**Function**

**A to T**

Assembly Model Code\*

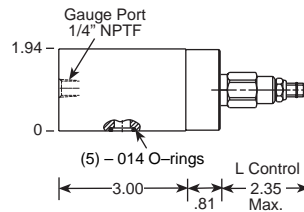
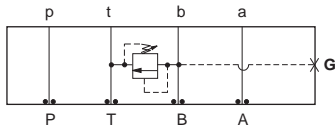
**RPEC-LAN-CBF**

\*Add modifier /S to order Ductile Iron for pressure rating over 3000 psi.

Assembly Model Code\*

**RDDA-LAN-CBF**

\*Add modifier /S to order Ductile Iron for pressure rating over 3000 psi.



**Function**

**B to T**

Assembly Model Code\*

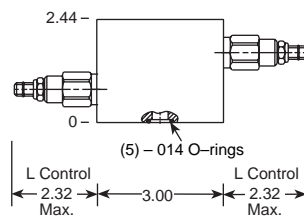
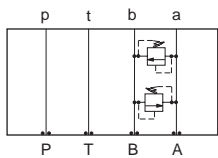
**RPEC-LAN-CBG**

\*Add modifier /S to order Ductile Iron for pressure rating over 3000 psi.

Assembly Model Code\*

**RDDA-LAN-CBG**

\*Add modifier /S to order Ductile Iron for pressure rating over 3000 psi.



**Function**

**A to B and B to A  
(Cross-port)**

Assembly Model Code\*

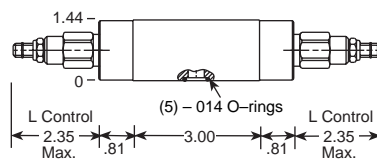
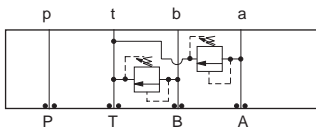
**RPEC-LAN-CBI**

\*Add modifier /S to order Ductile Iron for pressure rating over 3000 psi.

Assembly Model Code\*

**RDDA-LAN-CBI**

\*Add modifier /S to order Ductile Iron for pressure rating over 3000 psi.



**Function**

**A and B to T**

Assembly Model Code\*

**RPEC-LAN-CBD**

\*Add modifier /S to order Ductile Iron for pressure rating over 3000 psi.

Assembly Model Code\*

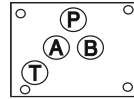
**RDDA-LAN-CBD**

\*Add modifier /S to order Ductile Iron for pressure rating over 3000 psi.

NOTES: Page 2 for cartridge models RP\*C-\*\*\* and RD\*A-\*\*\* show performance curves, technical tips, and options. See page 140 for technical information about sandwich bodies including ISO interface patterns, mounting instructions, studrods, and studkits. Go to [www.sunhydraulics.com](http://www.sunhydraulics.com) for more product information. Model Codes printed in red are Preferred Products and are readily available.

ISO 05 / CETOP 5 RELIEF VALVES

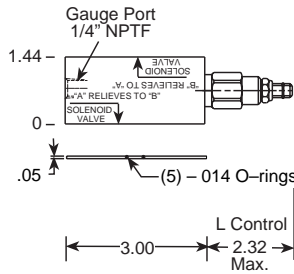
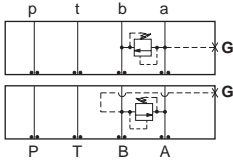
T-10A Cavity/T-2A Cavity



All sandwich bodies shown below are 2.50" wide

PILOT OPERATED

DIRECT ACTING



Function

A to B

B to A

Assembly Model Code\*

RPEC-LAN-CBH

\*Add modifier /S to order Ductile Iron for pressure rating over 3000 psi.

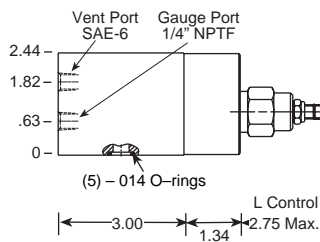
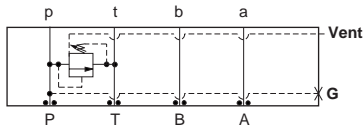
Assembly Model Code\*

RDDA-LAN-CBH

\*Add modifier /S to order Ductile Iron for pressure rating over 3000 psi.

Function

P to T (Externally Vented)



Vent Port

Assembly Model Code\*

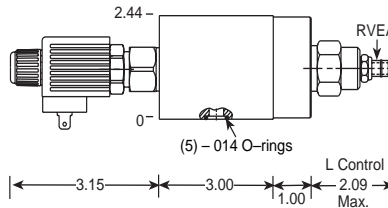
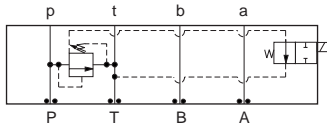
SAE-6

RVEA-LAN-BBC

\*Add modifier /S to order Ductile Iron for pressure rating over 3000 psi.

Function

P to T  
(Normally Open, Solenoid Vented)



Assembly Model Code\*

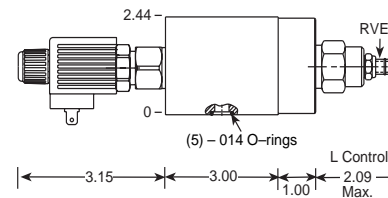
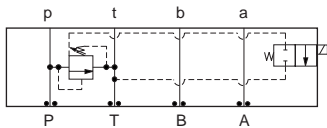
XRED-LAN-HA

\*Add modifier /S to order Ductile Iron for pressure rating over 3000 psi.

Coil must be selected separately. See page 248.

Function

P to T  
(Normally Closed, Solenoid Vented)



Assembly Model Code\*

XRED-LAN-CA

\*Add modifier /S to order Ductile Iron for pressure rating over 3000 psi.

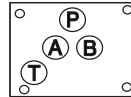
Coil must be selected separately. See page 248.

NOTES: Page 2 for cartridge models RP\*C-\*\*\*, RD\*A-\*\*\* and page 12 for cartridge model RV\*A-\*\*\* show performance curves, technical tips, and options. See page 140 for technical information about sandwich bodies including ISO interface patterns, mounting instructions, studrods, and studkits. Go to [www.sunhydraulics.com](http://www.sunhydraulics.com) for more product information.

**Sandwich Assemblies**

**ISO 05 / CETOP 5 SEQUENCE VALVES**

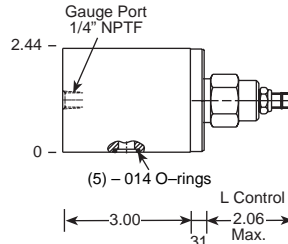
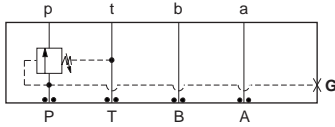
**T-2A Cavity**



All sandwich bodies shown below are 2.50" wide

**PILOT OPERATED**

**DIRECT ACTING**



**Function**

In to **P**

Assembly Model Code\*

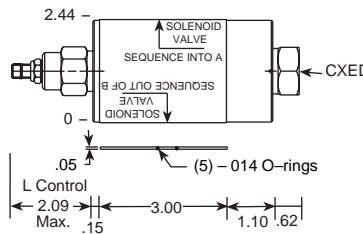
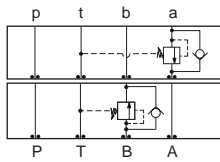
**RSFC-LAN-BBW**

\*Add modifier **/S** to order Ductile Iron for pressure rating over 3000 psi.

Assembly Model Code\*

**SXEA-LAN-BBW**

\*Add modifier **/S** to order Ductile Iron for pressure rating over 3000 psi.



**Function**

Into **A** (Reverse Free Flow Check)  
Out of **B** (Reverse Free Flow Check)

Assembly Model Code\*

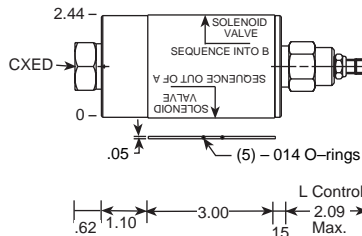
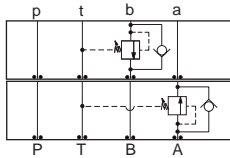
**RSFC-LAN-BB4**

\*Add modifier **/S** to order Ductile Iron for pressure rating over 3000 psi.

Assembly Model Code\*

**SXEA-LAN-BB4**

\*Add modifier **/S** to order Ductile Iron for pressure rating over 3000 psi.



**Function**

Into **B** (Reverse Free Flow Check)  
Out of **A** (Reverse Free Flow Check)

Assembly Model Code\*

**RSFC-LAN-BB5**

\*Add modifier **/S** to order Ductile Iron for pressure rating over 3000 psi.

Assembly Model Code\*

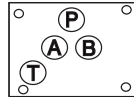
**SXEA-LAN-BB5**

\*Add modifier **/S** to order Ductile Iron for pressure rating over 3000 psi.

NOTES: Page 20 for cartridge model RS\*C-\*\*\* and SX\*A-\*\*\* and page 102 for CX\*D-\*\*\* show performance curves, technical tips, and options. See page 140 for technical information about sandwich bodies including ISO interface patterns, mounting instructions, studrods, and studkits. Go to [www.sunhydraulics.com](http://www.sunhydraulics.com) for more product information. Model Codes printed in red are Preferred Products and are readily available.

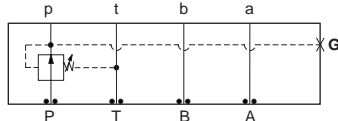
ISO 05 / CETOP 5 REDUCING VALVES

T-2A Cavity



All sandwich bodies shown below are 2.50" wide

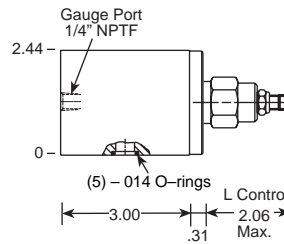
PILOT OPERATED



Assembly Model Code\*

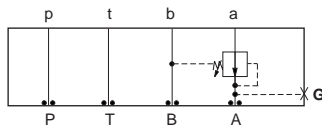
**PBFB-LAN-BBP**

\*Add modifier /S to order Ductile Iron for pressure rating over 3000 psi.



Function

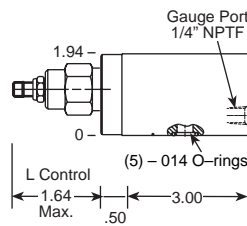
On P Drained to T



Assembly Model Code\*

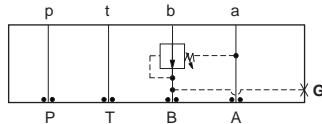
**PBFB-LAN-BBA**

\*Add modifier /S to order Ductile Iron for pressure rating over 3000 psi.



Function

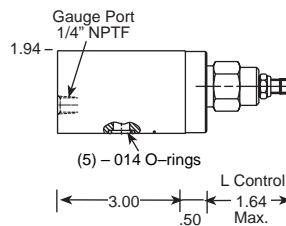
On A Drained to B



Assembly Model Code\*

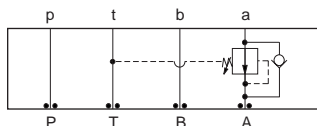
**PBFB-LAN-BBB**

\*Add modifier /S to order Ductile Iron for pressure rating over 3000 psi.



Function

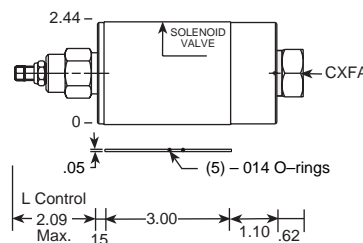
On B Drained to A



Assembly Model Code\*

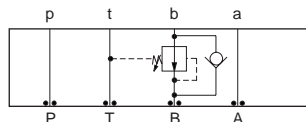
**PBFB-LAN-BB2**

\*Add modifier /S to order Ductile Iron for pressure rating over 3000 psi.



Function

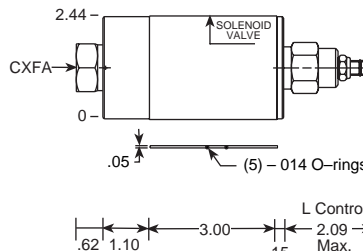
On A Drain to T  
(Reverse Free Flow Check)



Assembly Model Code\*

**PBFB-LAN-BB3**

\*Add modifier /S to order Ductile Iron for pressure rating over 3000 psi.



Function

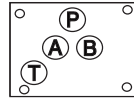
On B Drain to T  
(Reverse Free Flow Check)

NOTES: Page 34 for cartridge model PB\*B-\*\*\* and page 102 for cartridge model CX\*A-\*\*\* show performance curves, technical tips, and options. See page 140 for technical information about sandwich bodies including ISO interface patterns, mounting instructions, studrods, and studkits. Go to [www.sunhydraulics.com](http://www.sunhydraulics.com) for more product information. Model Codes printed in red are Preferred Products and are readily available.

## Sandwich Assemblies

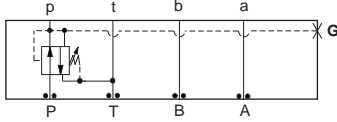
## ISO 05 / CETOP 5 REDUCING / RELIEVING VALVES

## T-2A Cavity



All sandwich bodies shown below are 2.50" wide

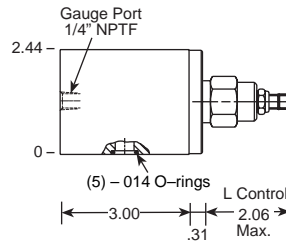
## PILOT OPERATED



Assembly Model Code\*

**PPFB-LAN-BBP**

\*Add modifier /S to order Ductile Iron for pressure rating over 3000 psi.



## DIRECT ACTING

## Function

On P, Tank to T

Assembly Model Code\*

**PRFB-LAN-BBP**

\*Add modifier /S to order Ductile Iron for pressure rating over 3000 psi.

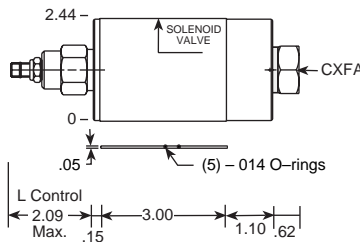
## Function

On A, Tank to T  
(Reverse Free Flow Check)

Assembly Model Code\*

**PPFB-LAN-BB2**

\*Add modifier /S to order Ductile Iron for pressure rating over 3000 psi.



Assembly Model Code\*

**PRFB-LAN-BB2**

\*Add modifier /S to order Ductile Iron for pressure rating over 3000 psi.

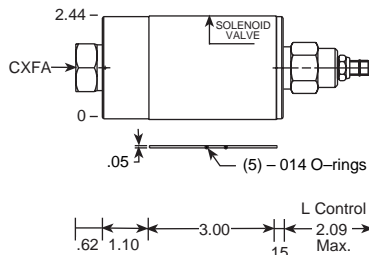
## Function

On B, Tank to T  
(Reverse Free Flow Check)

Assembly Model Code\*

**PPFB-LAN-BB3**

\*Add modifier /S to order Ductile Iron for pressure rating over 3000 psi.



Assembly Model Code\*

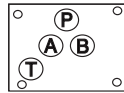
**PRFB-LAN-BB3**

\*Add modifier /S to order Ductile Iron for pressure rating over 3000 psi.

NOTES: Page 42 for cartridge models PP\*B-\*\*\* and PR\*B-\*\*\* show performance curves, technical tips, and options.  
See page 140 for technical information about sandwich bodies including ISO interface patterns, mounting instructions, studrods, and studkits.  
Go to [www.sunhydraulics.com](http://www.sunhydraulics.com) for more product information.  
Model Codes printed in red are Preferred Products and are readily available.

ISO 05 / CETOP 5 COUNTERBALANCE VALVES

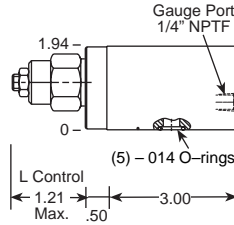
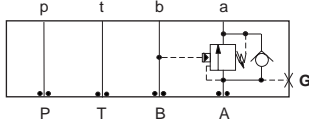
T-2A Cavity



All sandwich bodies shown below are 2.50" wide

**PILOT RATIOS**  
3:1 (CBEA), 1.5:1 (CBEB), 2:1 (CBEY)

**PILOT RATIOS**  
2.3:1 (CBEL), 4.5:1 (CBEG), 10:1 (CBEH)



Assembly Model Code\*  
**CBE\*-LHN-BBA**

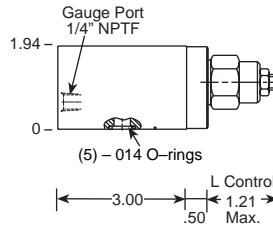
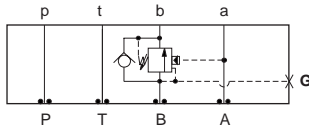
\*The 4th digit of the Model Code must be entered to specify counterbalance pilot ratio. Add modifier /S to order Ductile Iron for pressure rating over 3000 psi.

**Function**  
On A, Pilot from B

Assembly Model Code\*  
**CBE\*-LJN-BBA**

\*The 4th digit of the Model Code must be entered to specify counterbalance pilot ratio. Add modifier /S to order Ductile Iron for pressure rating over 3000 psi.

**Function**  
On B, Pilot from A



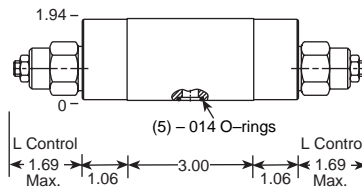
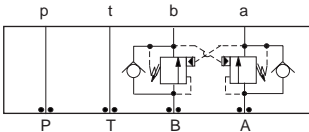
Assembly Model Code\*  
**CBE\*-LHN-BBB**

\*The 4th digit of the Model Code must be entered to specify counterbalance pilot ratio. Add modifier /S to order Ductile Iron for pressure rating over 3000 psi.

Assembly Model Code\*  
**CBE\*-LJN-BBB**

\*The 4th digit of the Model Code must be entered to specify counterbalance pilot ratio. Add modifier /S to order Ductile Iron for pressure rating over 3000 psi.

**Function**  
On A and B (Cross-Piloted)



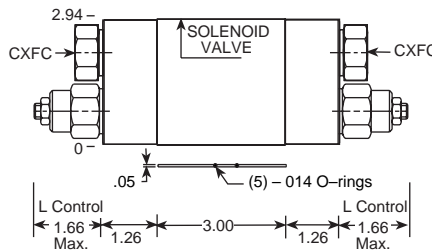
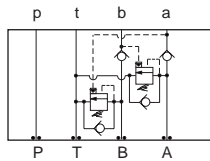
Assembly Model Code\*  
**CBE\*-LHN-BBY**

\*The 4th digit of the Model Code must be entered to specify counterbalance pilot ratio. Add modifier /S to order Ductile Iron for pressure rating over 3000 psi.

Assembly Model Code\*  
**CBE\*-LJN-BBY**

\*The 4th digit of the Model Code must be entered to specify counterbalance pilot ratio. Add modifier /S to order Ductile Iron for pressure rating over 3000 psi.

**Function**  
Cushion Lock Circuit  
On A and B



Assembly Model Code\*  
**CBE\*-LHN-BB8**

\*The 4th digit of the Model Code must be entered to specify counterbalance pilot ratio. Add modifier /S to order Ductile Iron for pressure rating over 3000 psi.

Assembly Model Code\*  
**CBE\*-LJN-BB8**

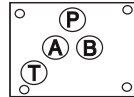
\*The 4th digit of the Model Code must be entered to specify counterbalance pilot ratio. Add modifier /S to order Ductile Iron for pressure rating over 3000 psi.

NOTES: Page 50 for cartridge model CB\*\*.\* show performance curves, technical tips, and options.  
See page 140 for technical information about sandwich bodies including ISO interface patterns, mounting instructions, studrods, and studkits.  
Go to [www.sunhydraulics.com](http://www.sunhydraulics.com) for more product information.  
Model Codes printed in red are Preferred Products and are readily available.

## Sandwich Assemblies

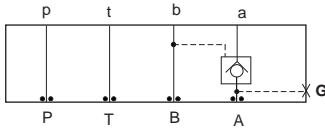
## ISO 05 / CETOP 5 PILOT-TO-OPEN CHECK VALVES

## T-2A Cavity



All sandwich bodies shown below are 2.50" wide

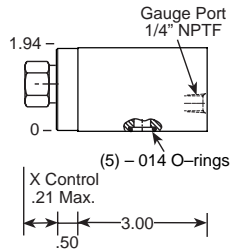
## PILOT OPERATED



Assembly  
Model Code\*

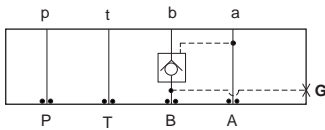
**CKEB-XCN-BBA**

\*Add modifier **/S** to order Ductile Iron for pressure rating over 3000 psi.



## Function

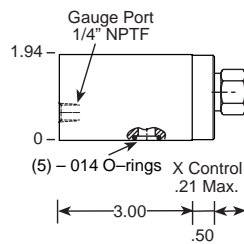
On A, Pilot from B



Assembly  
Model Code\*

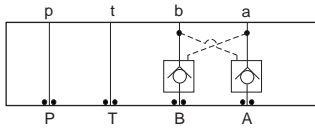
**CKEB-XCN-BBB**

\*Add modifier **/S** to order Ductile Iron for pressure rating over 3000 psi.



## Function

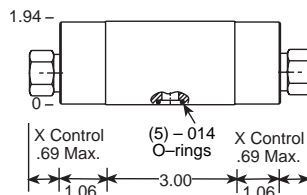
On B, Pilot from A



Assembly  
Model Code\*

**CKEB-XCN-BBY**

\*Add modifier **/S** to order Ductile Iron for pressure rating over 3000 psi.



## Function

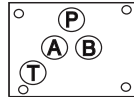
On A and B (Cross-piloted)

NOTES: Page 78 for cartridge model CK\*\*.\* show performance curves, technical tips, and options.  
See page 140 for technical information about sandwich bodies including ISO interface patterns, mounting instructions, studrods, and studkits.  
Go to [www.sunhydraulics.com](http://www.sunhydraulics.com) for more product information.  
Model Codes printed in red are Preferred Products and are readily available.



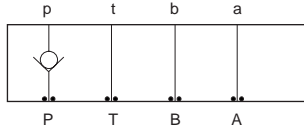
ISO 05 / CETOP 5 CHECK VALVES

T-5A Cavity



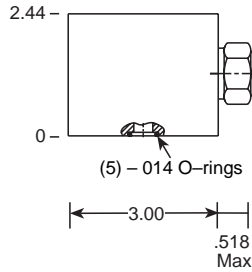
All sandwich bodies shown below are 2.50" wide

FREE FLOW  
PORT 1 TO 2

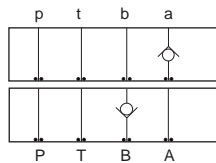


Assembly Model Code\*  
**CXFA-XCN-DBP**

\*Add modifier /S to order Ductile Iron for pressure rating over 3000 psi.

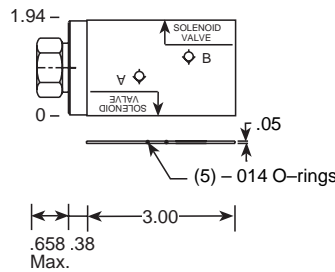


Function  
On P

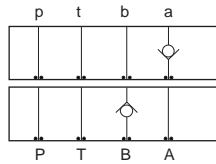


Assembly Model Code\*  
**CXFA-XCN-DBK**

\*Add modifier /S to order Ductile Iron for pressure rating over 3000 psi.

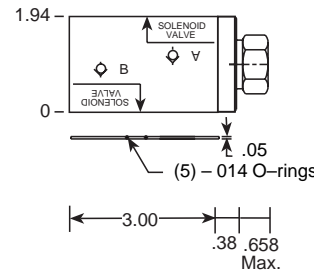


Function  
On A, Free Flow Out of Valve  
On B, Free Flow Into Valve

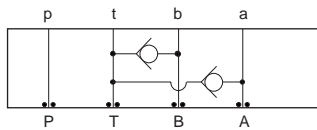


Assembly Model Code\*  
**CXFA-XCN-DBJ**

\*Add modifier /S to order Ductile Iron for pressure rating over 3000 psi.

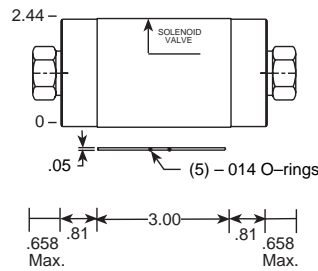


Function  
On A, Free Flow Into Valve  
On B, Free Flow Out of Valve



Assembly Model Code\*  
**CXFA-XAN-DBJ**

\*Add modifier /S to order Ductile Iron for pressure rating over 3000 psi.



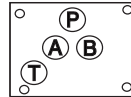
Function  
T to A and B

NOTES: Page 102 for cartridge models CX\*A-\*\*\* and CX\*D-\*\*\* show performance curves, technical tips, and options. See page 140 for technical information about sandwich bodies including ISO interface patterns, mounting instructions, studrods, and studkits. Go to [www.sunhydraulics.com](http://www.sunhydraulics.com) for more product information. Model Codes printed in red are Preferred Products and are readily available.

**Sandwich Assemblies**

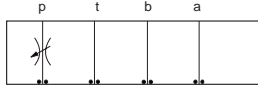
**ISO 05 / CETOP 5 FLOW CONTROL VALVES**

**T-5A Cavity**



All sandwich bodies shown below are 2.50" wide

**FULLY ADJUSTABLE NEEDLE WITH REVERSE FREE FLOW CHECK**

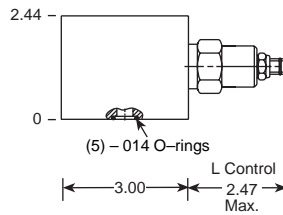


Note: No Check with NFDC Model

Assembly Model Code\*

**NFDC-LAN-DBP**

\*Add modifier /S to order Ductile Iron for pressure rating over 3000 psi.



**FULLY ADJUSTABLE PRESSURE COMPENSATED WITH FREE FLOW CHECK**

**Function**

Meter-In P

Assembly Model Code\*

**FDCB-LAN-DBP**

\*Add modifier /S to order Ductile Iron for pressure rating over 3000 psi.

**Function**

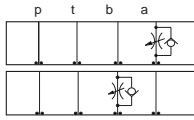
Meter-Out A

Meter-In B

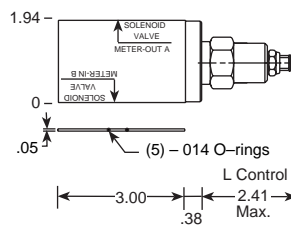
Assembly Model Code\*

**NCEB-LAN-DBA**

\*Add modifier /S to order Ductile Iron for pressure rating over 3000 psi.



Note: Pressure Compensated Symbol Not Shown



Assembly Model Code\*

**FDCB-LAN-DBA**

\*Add modifier /S to order Ductile Iron for pressure rating over 3000 psi.

**Function**

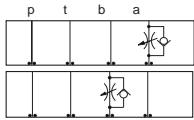
Meter-In A

Meter-Out B

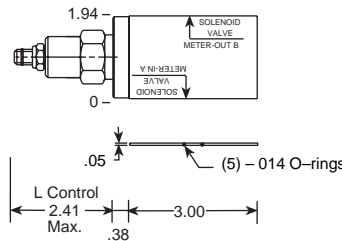
Assembly Model Code\*

**NCEB-LAN-DBB**

\*Add modifier /S to order Ductile Iron for pressure rating over 3000 psi.



Note: Pressure Compensated Symbol Not Shown



Assembly Model Code\*

**FDCB-LAN-DBB**

\*Add modifier /S to order Ductile Iron for pressure rating over 3000 psi.

**Function**

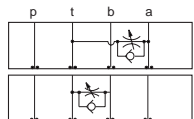
Bleed-Off A to T

Bleed-Off B to T

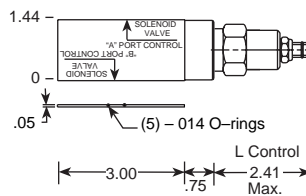
Assembly Model Code\*

**NCEB-LAN-DBC**

\*Add modifier /S to order Ductile Iron for pressure rating over 3000 psi.



Note: Pressure Compensated Symbol Not Shown



Assembly Model Code\*

**FDCB-LAN-DBC**

\*Add modifier /S to order Ductile Iron for pressure rating over 3000 psi.

**Function**

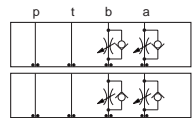
Meter-In A and B

Meter-Out A and B

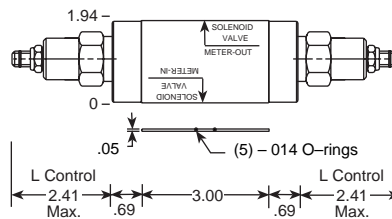
Assembly Model Code\*

**NCEB-LAN-DBY**

\*Add modifier /S to order Ductile Iron for pressure rating over 3000 psi.



Note: Pressure Compensated Symbol Not Shown



Assembly Model Code\*

**FDCB-LAN-DBY**

\*Add modifier /S to order Ductile Iron for pressure rating over 3000 psi.

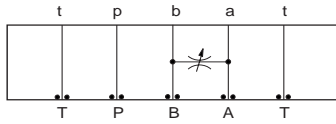
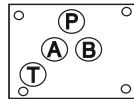
NOTES: Page 110 for cartridge models NF\*C-\*\*\* and NC\*B-\*\*\*, and page 126 for FD\*B-\*\*\* show performance curves, technical tips, and options. See page 140 for technical information about sandwich bodies including ISO interface patterns, mounting instructions, studrods, and studkits. Go to [www.sunhydraulics.com](http://www.sunhydraulics.com) for more product information. Model Codes printed in red are Preferred Products and are readily available.

ISO 05 / CETOP 5 FLOW CONTROL VALVES

T-13A Cavity

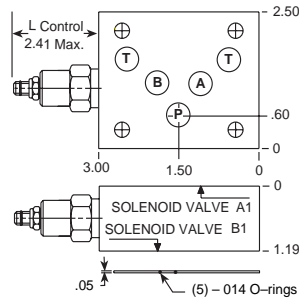
All sandwich bodies shown below are 2.50" wide

FULLY ADJUSTABLE NEEDLE



Assembly Model Code\*  
**NFCC-LCN-DBS**

\*Add modifier **/S** to order Ductile Iron for pressure rating over 3000 psi.



Function

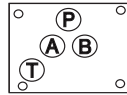
Meter <b>A</b> to <b>B</b>
Meter <b>B</b> to <b>A</b>

NOTES: Page 110 for cartridge models NF\*C-\*\*\* show performance curves, technical tips, and options.  
See page 140 for technical information about sandwich bodies including ISO interface patterns, mounting instructions, studrods, and studkits.  
Go to [www.sunhydraulics.com](http://www.sunhydraulics.com) for more product information.

**Sandwich Assemblies**

**ISO 05 / CETOP 5 FLOW CONTROL VALVES  
(RAPID ADVANCE AND FEED ASSEMBLIES)**

**T-5A Cavity**



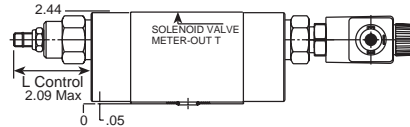
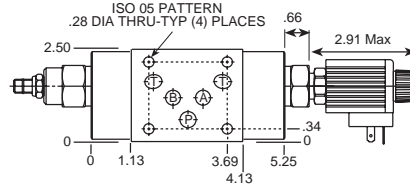
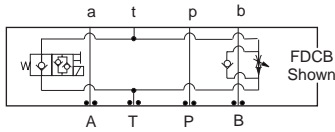
All sandwich bodies shown below are 2.50" wide

**FIXED ORIFICE TUNABLE,  
PRESSURE COMPENSATED**

**FULLY ADJUSTABLE, PRESSURE  
COMPENSATED WITH FREE FLOW CHECK**

**Function**

Meter-Out **T**, Solenoid Normally Closed



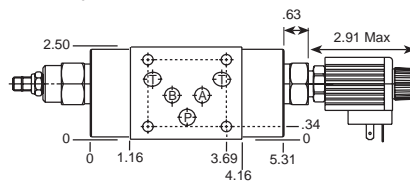
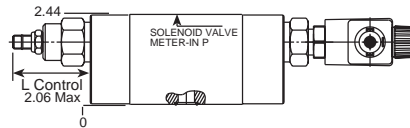
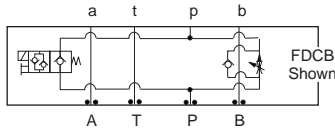
**Assembly  
Model Code\***  
**X3DD-LAN-CA**

Coil must be selected separately. See page 248.

\*Add modifier **/S** to order Ductile Iron for pressure rating over 3000 psi.

**Function**

Meter in **P**, Solenoid Normally Closed

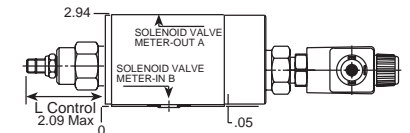
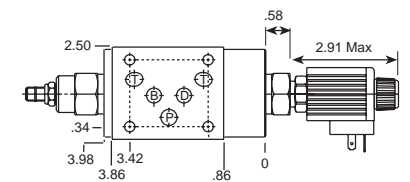
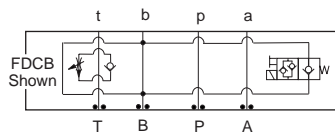


**Assembly  
Model Code\***  
**X2DD-LAN-CA**

\*Add modifier **/S** to order Ductile Iron for pressure rating over 3000 psi.

**Function**

Meter-Out **A**, Solenoid Normally Closed  
Meter-In **B**, Solenoid Normally Closed



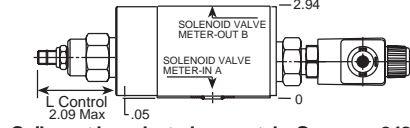
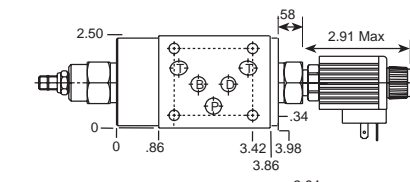
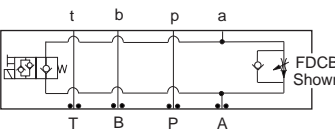
**Assembly  
Model Code\***  
**X6DD-LAN-CA**

Coil must be selected separately. See page 248.

\*Add modifier **/S** to order Ductile Iron for pressure rating over 3000 psi.

**Function**

Meter-In **A**, Solenoid Normally Closed  
Meter-Out **B**, Solenoid Normally Closed



**Assembly  
Model Code\***  
**X4DD-LAN-CA**

Coil must be selected separately. See page 248.

\*Add modifier **/S** to order Ductile Iron for pressure rating over 3000 psi.

NOTES: Page 110 for cartridge models NF\*C-\*\*\* and NC\*B-\*\*\* show performance curves, technical tips, and options.  
See page 140 for technical information about sandwich bodies including ISO interface patterns, mounting instructions, studrods, and studkits.  
Go to [www.sunhydraulics.com](http://www.sunhydraulics.com) for more product information.