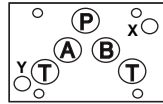


**ISO 05 / CETOP 5 WITH X AND Y RELIEF VALVES
(SIDE PORTED SUBPLATE)**

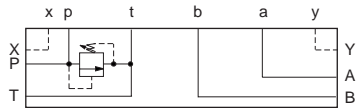
T-10A Cavity



All subplates shown below are 4.5" wide

PILOT OPERATED

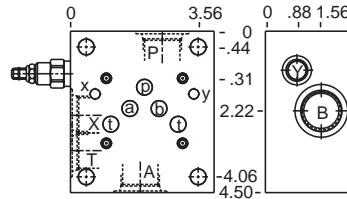
DIRECT ACTING



ISO5/CETOP VERSION

Function

P to T



Order Retainer and Seal Kits separately. (See page 141)

Ports A, B, P, T	Ports X, Y	Assembly Model Code*
1/2" NPTF	1/4" NPTF	RDDA-LAN-ZHP
3/4" NPTF	1/4" NPTF	RDDA-LAN-ZHQ
SAE-10	SAE-6	RDDA-LAN-ZHR
SAE-12	SAE-6	RDDA-LAN-ZHS

*Add modifier /S to order Ductile Iron for pressure rating over 3000 psi.

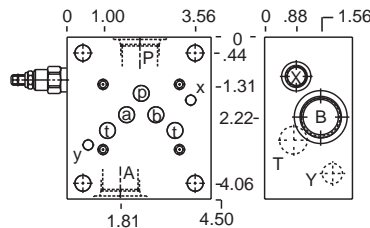
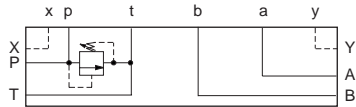
Ports A, B, P, T	Ports X, Y	Assembly Model Code*
1/2" NPTF	1/4" NPTF	RPEC-LAN-ZHP
3/4" NPTF	1/4" NPTF	RPEC-LAN-ZHQ
SAE-10	SAE-6	RPEC-LAN-ZHR
SAE-12	SAE-6	RPEC-LAN-ZHS

*Add modifier /S to order Ductile Iron for pressure rating over 3000 psi.

U.S. D05H VERSION

Function

P to T



Order Retainer and Seal Kits separately. (See page 141)

Ports A, B, P, T	Ports X, Y	Assembly Model Code*
1/2" NPTF	1/4" NPTF	RDDA-LAN-ZHH
3/4" NPTF	1/4" NPTF	RDDA-LAN-ZHJ
SAE-10	SAE-6	RDDA-LAN-ZHK
SAE-12	SAE-6	RDDA-LAN-ZHL

*Add modifier /S to order Ductile Iron for pressure rating over 3000 psi.

Ports A, B, P, T	Ports X, Y	Assembly Model Code*
1/2" NPTF	1/4" NPTF	RPEC-LAN-ZHH
3/4" NPTF	1/4" NPTF	RPEC-LAN-ZHJ
SAE-10	SAE-6	RPEC-LAN-ZHK
SAE-12	SAE-6	RPEC-LAN-ZHL

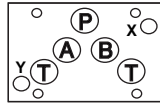
*Add modifier /S to order Ductile Iron for pressure rating over 3000 psi.

NOTES: Page 2 for cartridge models RP*C-*** and RD*A-*** show performance curves, technical tips, and options. See page 140 for technical information about sandwich bodies including ISO interface patterns, mounting instructions, studrods, and studkits. Sun ISO 05 X, Y, sandwich bodies are furnished with pilot and drain connections. Seal plates are NOT supplied with these bodies, due to the differences in the European and U.S. seal plates. To order seal plates separately see page 141-142.

Go to www.sunhydraulics.com for more product information and pricing.

ISO 05 / CETOP 5 WITH X AND Y RELIEF VALVES

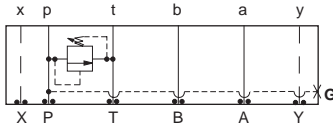
T-3A / T-10A Cavities



All sandwich bodies shown below are 2.50" wide

PILOT OPERATED

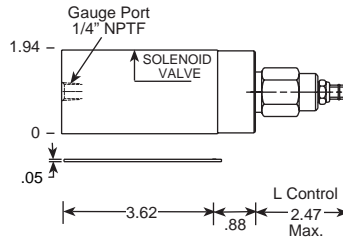
DIRECT ACTING



Assembly Model Code*

RPGC-LAN-CJP

*Add modifier /S to order Ductile Iron for pressure rating over 3000 psi.



Order Retainer and Seal Kits separately. (See page 141)

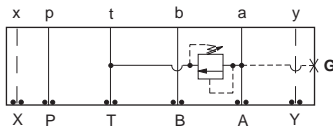
Function

P to T (High Capacity)

Assembly Model Code*

RDFA-LAN-CJP

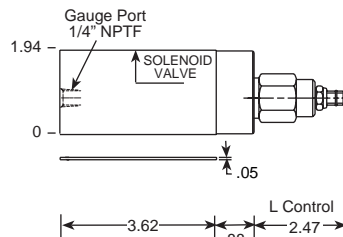
*Add modifier /S to order Ductile Iron for pressure rating over 3000 psi.



Assembly Model Code*

RPGC-LAN-CJA

*Add modifier /S to order Ductile Iron for pressure rating over 3000 psi.



Order Retainer and Seal Kits separately. (See page 141)

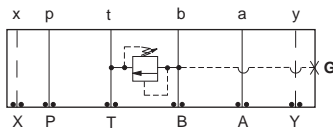
Function

A to T (High Capacity)

Assembly Model Code*

RDFA-LAN-CJA

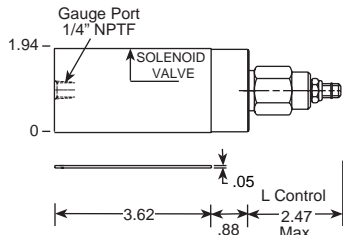
*Add modifier /S to order Ductile Iron for pressure rating over 3000 psi.



Assembly Model Code*

RPGC-LAN-CJB

*Add modifier /S to order Ductile Iron for pressure rating over 3000 psi.



Order Retainer and Seal Kits separately. (See page 141)

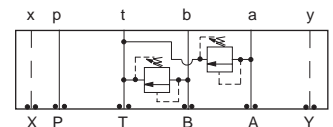
Function

B to T (High Capacity)

Assembly Model Code*

RDFA-LAN-CJB

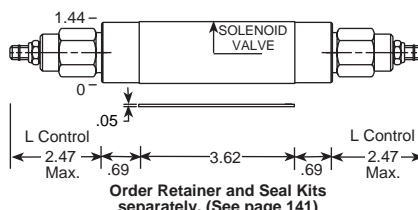
*Add modifier /S to order Ductile Iron for pressure rating over 3000 psi.



Assembly Model Code*

RPGC-LAN-CJX

*Add modifier /S to order Ductile Iron for pressure rating over 3000 psi.



Order Retainer and Seal Kits separately. (See page 141)

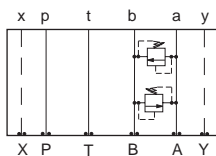
Function

A and B to T (High Capacity)

Assembly Model Code*

RDFA-LAN-CJX

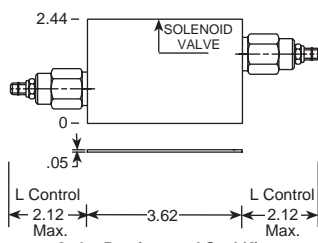
*Add modifier /S to order Ductile Iron for pressure rating over 3000 psi.



Assembly Model Code*

RPEC-LAN-CJY

*Add modifier /S to order Ductile Iron for pressure rating over 3000 psi.



Order Retainer and Seal Kits separately. (See page 141)

Function

A to B and B to A (Cross-port)

Assembly Model Code*

RDDA-LAN-CJY

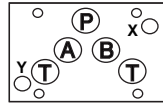
*Add modifier /S to order Ductile Iron for pressure rating over 3000 psi.

NOTES: Page 2 for cartridge models RP*C-*** and RD*A-*** show performance curves, technical tips, and options. See page 140 for technical information about sandwich bodies including ISO interface patterns, mounting instructions, studrods, and studkits. Sun ISO 05 X, Y, sandwich bodies are furnished with pilot and drain connections. Seal plates are NOT supplied with these bodies, due to the differences in the European and U.S. seal plates. To order seal plates separately see page 141-142.

Go to www.sunhydraulics.com for more product information. Model Codes printed in red are Preferred Products and are readily available.

ISO 05 / CETOP 5 WITH X AND Y SEQUENCE VALVES

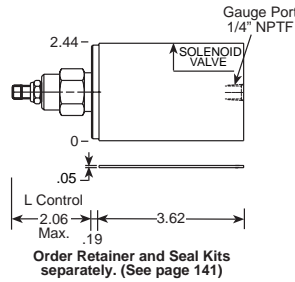
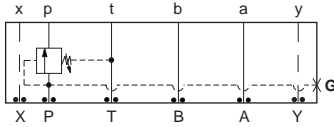
T-2A Cavity



All sandwich bodies shown below are 2.50" wide

PILOT OPERATED

DIRECT ACTING



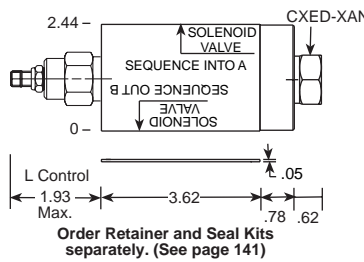
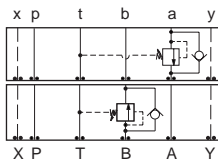
Function
In to P

Assembly Model Code*
RSFC-LAN-BJW

Assembly Model Code*
SXEA-LAN-BJW

*Add modifier /S to order Ductile Iron for pressure rating over 3000 psi.

*Add modifier /S to order Ductile Iron for pressure rating over 3000 psi.



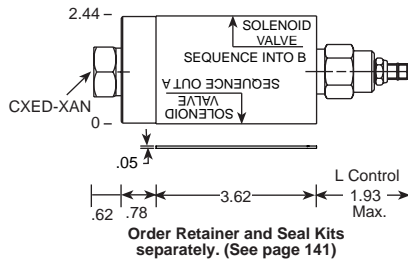
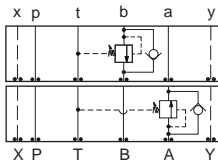
Function
In to A (Reverse Free Flow Check)
Out of B (Reverse Free Flow Check)

Assembly Model Code*
RSFC-LAN-BJ4

Assembly Model Code*
SXEA-LAN-BJ4

*Add modifier /S to order Ductile Iron for pressure rating over 3000 psi.

*Add modifier /S to order Ductile Iron for pressure rating over 3000 psi.



Function
In to B (Reverse Free Flow Check)
Out of A (Reverse Free Flow Check)

Assembly Model Code*
RSFC-LAN-BJ5

Assembly Model Code*
SXEA-LAN-BJ5

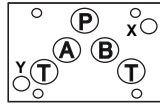
*Add modifier /S to order Ductile Iron for pressure rating over 3000 psi.

*Add modifier /S to order Ductile Iron for pressure rating over 3000 psi.

NOTES: Page 20 for cartridge models RS*C-*** and SX*A-*** show performance curves, technical tips, and options. See page 140 for technical information about sandwich bodies including ISO interface patterns, mounting instructions, studrods, and studkits. Sun ISO 05 X, Y, sandwich bodies are furnished with pilot and drain connections. Seal plates are NOT supplied with these bodies, due to the differences in the European and U.S. seal plates. To order seal plates separately see page 141-142. Go to www.sunhydraulics.com for more product information.

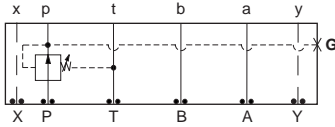
ISO 05 / CETOP 5 WITH X AND Y REDUCING VALVES

T-2A Cavity



All sandwich bodies shown below are 2.50" wide

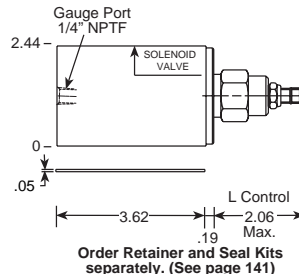
PILOT OPERATED



Assembly Model Code*

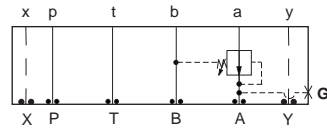
PBFB-LAN-BJP

*Add modifier /S to order Ductile Iron for pressure rating over 3000 psi.



Function

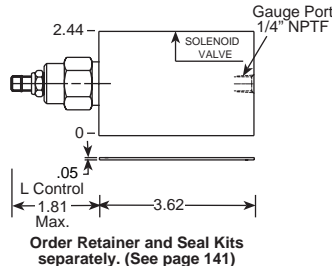
On P Drained to T



Assembly Model Code*

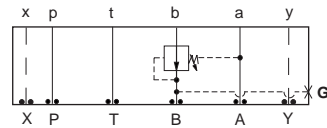
PBFB-LAN-BJA

*Add modifier /S to order Ductile Iron for pressure rating over 3000 psi.



Function

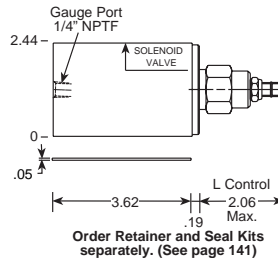
On A Drained to B



Assembly Model Code*

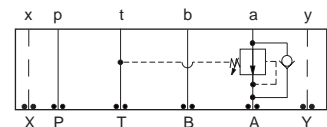
PBFB-LAN-BJB

*Add modifier /S to order Ductile Iron for pressure rating over 3000 psi.



Function

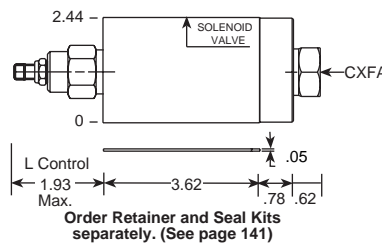
On B Drained to A



Assembly Model Code*

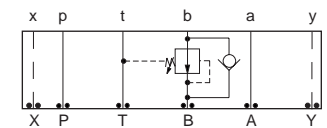
PBFB-LAN-BJ2

*Add modifier /S to order Ductile Iron for pressure rating over 3000 psi.



Function

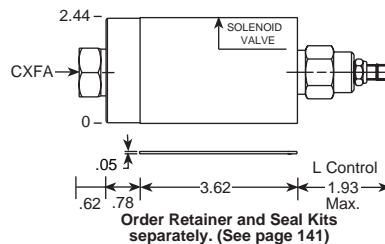
On A Drain to T
(Reverse Free Flow Check)



Assembly Model Code*

PBFB-LAN-BJ3

*Add modifier /S to order Ductile Iron for pressure rating over 3000 psi.



Function

On B Drain to T
(Reverse Free Flow Check)

NOTES: Page 34 for cartridge models PB*B-*** and page 102 for CX*A-*** show performance curves, technical tips, and options.

See page 140 for technical information about sandwich bodies including ISO interface patterns, mounting instructions, studrods, and studkits.

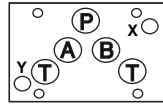
Sun ISO 05 X, Y, sandwich bodies are furnished with pilot and drain connections. Seal plates are NOT supplied with these bodies, due to the differences in the European and U.S. seal plates. To order seal plates separately see page 141-142

Go to www.sunhydraulics.com for more product information.

Model Codes printed in red are Preferred Products and are readily available.

ISO 05 / CETOP 5 WITH X AND Y REDUCING / RELIEVING VALVES

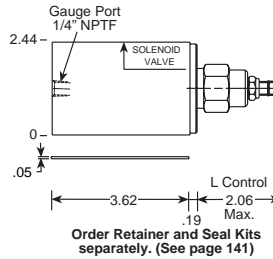
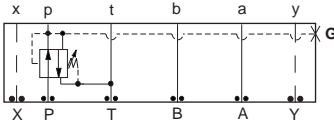
T-2A Cavity



All sandwich bodies shown below are 2.50" wide

PILOT OPERATED

DIRECT ACTING



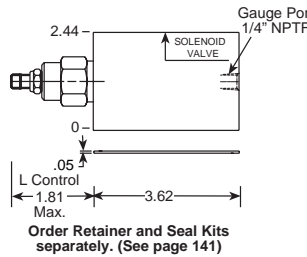
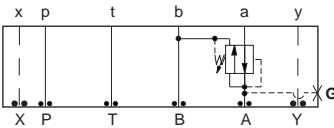
Function
On P Tank to T Drained to T

Assembly Model Code*
PPFB-LAN-BJP

Assembly Model Code*
PRFB-LAN-BJP

*Add modifier /S to order Ductile Iron for pressure rating over 3000 psi.

*Add modifier /S to order Ductile Iron for pressure rating over 3000 psi.



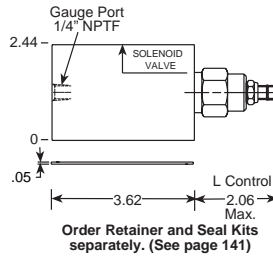
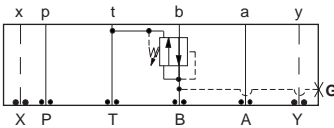
Function
On A Tank to B

Assembly Model Code*
PPFB-LAN-BJA

Assembly Model Code*
PRFB-LAN-BJA

*Add modifier /S to order Ductile Iron for pressure rating over 3000 psi.

*Add modifier /S to order Ductile Iron for pressure rating over 3000 psi.



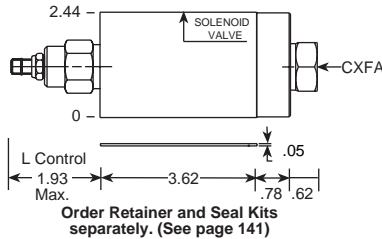
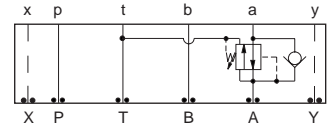
Function
On B Tank to A

Assembly Model Code*
PPFB-LAN-BJB

Assembly Model Code*
PRFB-LAN-BJB

*Add modifier /S to order Ductile Iron for pressure rating over 3000 psi.

*Add modifier /S to order Ductile Iron for pressure rating over 3000 psi.



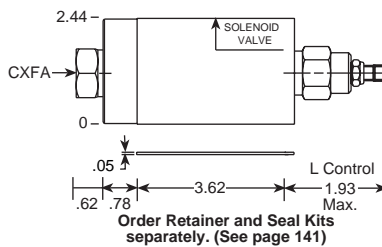
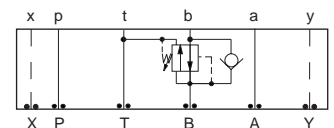
Function
On A Tank to T
(Reverse Free Flow Check)

Assembly Model Code*
PPFB-LAN-BJ2

Assembly Model Code*
PRFB-LAN-BJ2

*Add modifier /S to order Ductile Iron for pressure rating over 3000 psi.

*Add modifier /S to order Ductile Iron for pressure rating over 3000 psi.



Function
On B Tank to T
(Reverse Free Flow Check)

Assembly Model Code*
PPFB-LAN-BJ3

Assembly Model Code*
PRFB-LAN-BJ3

*Add modifier /S to order Ductile Iron for pressure rating over 3000 psi.

*Add modifier /S to order Ductile Iron for pressure rating over 3000 psi.

NOTES: Page 34 for cartridge models PPFB-*** and PRFB-***, and page 102 for C*FA-*** show performance curves, technical tips, and options. See page 140 for technical information about sandwich bodies including ISO interface patterns, mounting instructions, studrods, and studkits.

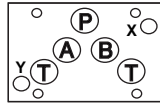
Sun ISO 05 X, Y, sandwich bodies are furnished with pilot and drain connections. Seal plates are NOT supplied with these bodies, due to the differences in the European and U.S. seal plates. To order seal plates separately see page 141-142.

Go to www.sunhydraulics.com for more product information.

Model Codes printed in red are Preferred Products and are readily available.

ISO 05 / CETOP 5 WITH X AND Y COUNTERBALANCE VALVES

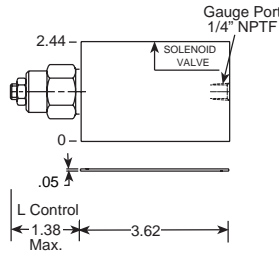
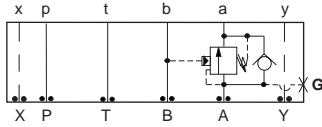
T-2A Cavity



All sandwich bodies shown below are 2.50" wide

PILOT RATIOS
3:1, 1.5:1 and 2:1

PILOT RATIOS
2.3:1, 4.5:1 and 10:1



Function

On A Pilot from B

Assembly Model Code*

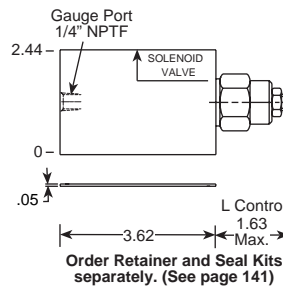
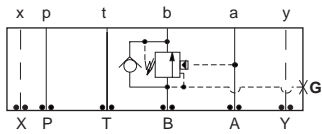
CBE*-LHN-BJA

*The 4th digit of the Model Code must be entered to specify counterbalance pilot ratio. Add modifier /S to order Ductile Iron for pressure rating over 3000 psi.

Assembly Model Code*

CBE*-LJN-BJA

*Add modifier /S to order Ductile Iron for pressure rating over 3000 psi.



Function

On B Pilot from A

Assembly Model Code*

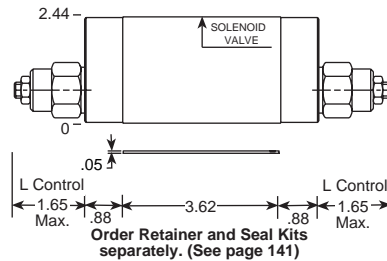
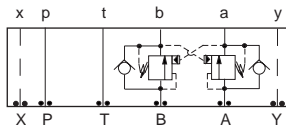
CBE*-LHN-BJB

*The 4th digit of the Model Code must be entered to specify counterbalance pilot ratio. Add modifier /S to order Ductile Iron for pressure rating over 3000 psi.

Assembly Model Code*

CBE*-LJN-BJB

*Add modifier /S to order Ductile Iron for pressure rating over 3000 psi.



Function

On A and B (Cross-Piloted)

Assembly Model Code*

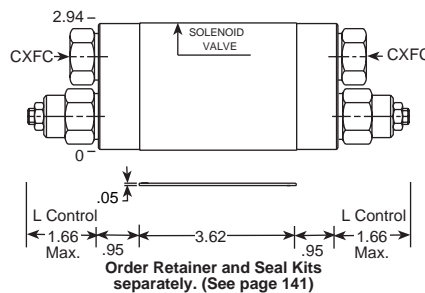
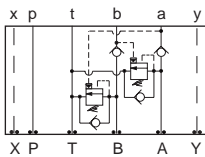
CBE*-LHN-BJY

*The 4th digit of the Model Code must be entered to specify counterbalance pilot ratio. Add modifier /S to order Ductile Iron for pressure rating over 3000 psi.

Assembly Model Code*

CBE*-LJN-BJY

*Add modifier /S to order Ductile Iron for pressure rating over 3000 psi.



Function

Cushion Lock Circuit
On A and B

Assembly Model Code*

CBE*-LHN-BJ8

*The 4th digit of the Model Code must be entered to specify counterbalance pilot ratio. Add modifier /S to order Ductile Iron for pressure rating over 3000 psi.

Assembly Model Code*

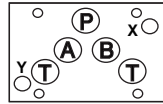
CBE*-LJN-BJ8

*Add modifier /S to order Ductile Iron for pressure rating over 3000 psi.

NOTES: Page 50 for cartridge model CBE*-*** show performance curves, technical tips, and options. See page 140 for technical information about sandwich bodies including ISO interface patterns, mounting instructions, studrods, and studkits. Sun ISO 05 X, Y, sandwich bodies are furnished with pilot and drain connections. Seal plates are NOT supplied with these bodies, due to the differences in the European and U.S. seal plates. To order seal plates separately see page 141-142. Go to www.sunhydraulics.com for more product information. Model Codes printed in red are Preferred Products and are readily available.

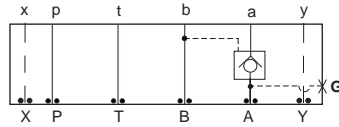
ISO 05 / CETOP 5 WITH X AND Y PILOT-TO-OPEN CHECK VALVES

T-2A Cavity



All sandwich bodies shown below are 2.50" wide

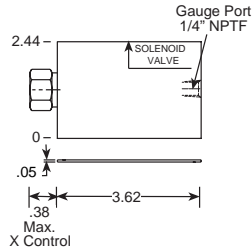
PILOT OPERATED



Assembly Model Code*

CKEB-XCN-BJA

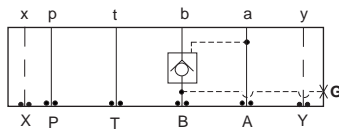
*Add modifier /S to order Ductile Iron for pressure rating over 3000 psi.



Order Retainer and Seal Kits separately. (See page 141)

Function

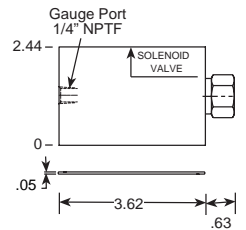
On A Pilot from B



Assembly Model Code*

CKEB-XCN-BJB

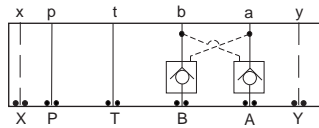
*Add modifier /S to order Ductile Iron for pressure rating over 3000 psi.



Order Retainer and Seal Kits separately. (See page 141)

Function

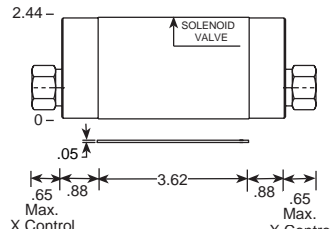
On B Pilot from A



Assembly Model Code*

CKEB-XCN-BJY

*Add modifier /S to order Ductile Iron for pressure rating over 3000 psi.



Order Retainer and Seal Kits separately. (See page 141)

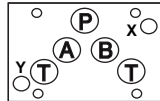
Function

On A and B (Cross-Piloted)

NOTES: Page 78 for cartridge models CK**_*** show performance curves, technical tips, and options.
See page 140 for technical information about sandwich bodies including ISO interface patterns, mounting instructions, studrods, and studkits.
Sun ISO 05 X, Y, sandwich bodies are furnished with pilot and drain connections. Seal plates are NOT supplied with these bodies, due to the differences in the European and U.S. seal plates. To order seal plates separately see page 141-142.
Go to www.sunhydraulics.com for more product information.
Model Codes printed in red are Preferred Products and are readily available.

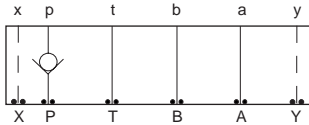
ISO 05 / CETOP 5 WITH X AND Y CHECK VALVES

T-5A Cavity



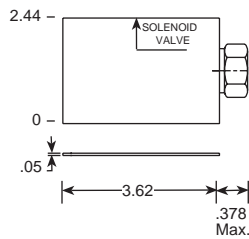
All sandwich bodies shown below are 2.50" wide

CHECK VALVES



Assembly Model Code*
CXFA-XCN-DJP

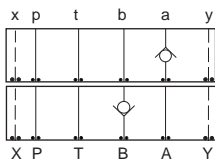
*Add modifier /S to order Ductile Iron for pressure rating over 3000 psi.



Order Retainer and Seal Kits separately. (See page 141)

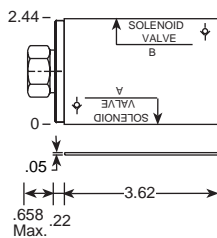
Function

On P



Assembly Model Code*
CXFA-XCN-DJK

*Add modifier /S to order Ductile Iron for pressure rating over 3000 psi.

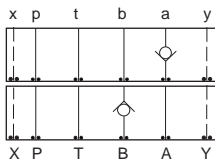


Order Retainer and Seal Kits separately. (See page 141)

Function

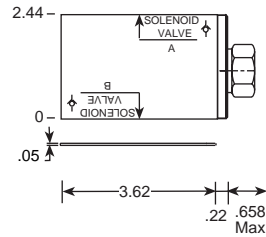
On A Free Flow Out of Valve

On B Free Flow Into Valve



Assembly Model Code*
CXFA-XCN-DJJ

*Add modifier /S to order Ductile Iron for pressure rating over 3000 psi.

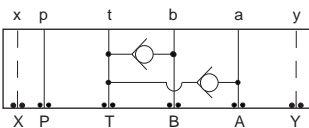


Order Retainer and Seal Kits separately. (See page 141)

Function

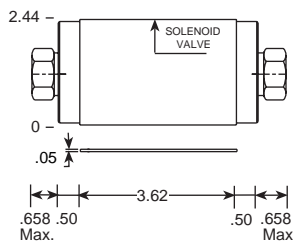
On A Free Flow Into Valve

On B Free Flow Out of Valve



Assembly Model Code*
CXFA-XAN-DJW

*Add modifier /S to order Ductile Iron for pressure rating over 3000 psi.



Order Retainer and Seal Kits separately. (See page 141)

Function

T to A and B

NOTES: Page 102 for cartridge models CX*A-*** show performance curves, technical tips, and options.

See page 140 for technical information about sandwich bodies including ISO interface patterns, mounting instructions, studrods, and studkits.

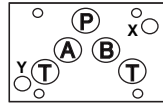
Sun ISO 05 X, Y, sandwich bodies are furnished with pilot and drain connections. Seal plates are NOT supplied with these bodies, due to the differences in the European and U.S. seal plates. To order seal plates separately see page 141-142.

Go to www.sunhydraulics.com for more product information.

Model Codes printed in red are Preferred Products and are readily available.

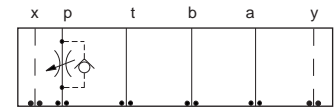
ISO 05 / CETOP 5 WITH X AND Y FLOW CONTROL VALVES

T-5A Cavity



All sandwich bodies shown below are 2.50" wide

FULLY ADJUSTABLE NEEDLE



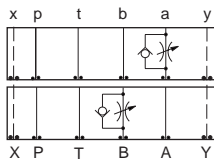
Note: Free Flow Check with Model FDCB Only

Assembly Model Code*

NFDC-LAN-DJP

*Add modifier /S to order Ductile Iron for pressure rating over 3000 psi.

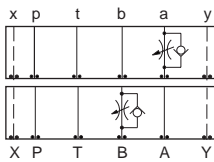
FULLY ADJUSTABLE NEEDLE WITH FREE FLOW CHECK



Assembly Model Code*

NCEB-LCN-DJA

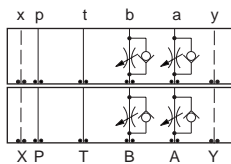
*Add modifier /S to order Ductile Iron for pressure rating over 3000 psi.



Assembly Model Code*

NCEB-LCN-DJB

*Add modifier /S to order Ductile Iron for pressure rating over 3000 psi.

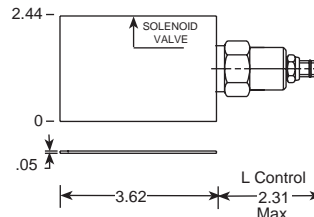


Assembly Model Code*

NCEB-LCN-DJY

*Add modifier /S to order Ductile Iron for pressure rating over 3000 psi.

FULLY ADJUSTABLE PRESSURE COMPENSATED WITH FREE FLOW CHECK



Order Retainer and Seal Kits separately. (See page 141)

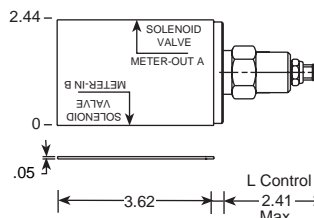
Function

Meter-In P

Assembly Model Code*

FDCB-LAN-DJP

*Add modifier /S to order Ductile Iron for pressure rating over 3000 psi.



Order Retainer and Seal Kits separately. (See page 141)

Function

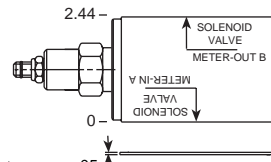
Meter-Out A

Meter-In B

Assembly Model Code*

FDCB-LAN-DJA

*Add modifier /S to order Ductile Iron for pressure rating over 3000 psi.



Order Retainer and Seal Kits separately. (See page 141)

Function

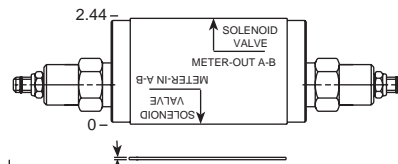
Meter-In A

Meter-Out B

Assembly Model Code*

FDCB-LAN-DJB

*Add modifier /S to order Ductile Iron for pressure rating over 3000 psi.



Order Retainer and Seal Kits separately. (See page 141)

Function

Meter-In A and B

Meter-Out A and B

Assembly Model Code*

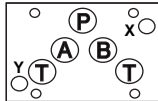
FDCB-LAN-DJY

*Add modifier /S to order Ductile Iron for pressure rating over 3000 psi.

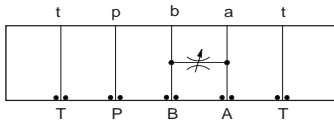
NOTES: Page 110 for cartridge models NF*C-*** and NC*B-***, and page 126 for FD**.* show performance curves, technical tips, and options. See page 140 for technical information about sandwich bodies including ISO interface patterns, mounting instructions, studrods, and studkits. Sun ISO 05 X, Y, sandwich bodies are furnished with pilot and drain connections. Seal plates are NOT supplied with these bodies, due to the differences in the European and U.S. seal plates. To order seal plates separately see page 141-142. Go to www.sunhydraulics.com for more product information. Model Codes printed in red are Preferred Products and are readily available.

ISO 05 / CETOP 5 WITH X AND Y FLOW CONTROL VALVES

T-13A Cavity



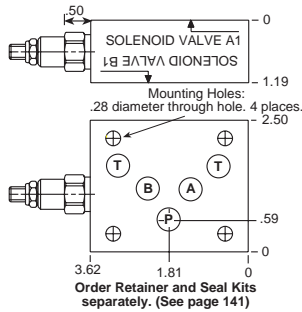
FULLY ADJUSTABLE NEEDLE



Assembly Model Code*

NFCC-LCN-DJS

*Add modifier /S to order Ductile Iron for pressure rating over 3000 psi.



Function

Meter A to B and B to A

NOTES: Page 110 for cartridge model NF*C-*** show performance curves, technical tips, and options.
 See page 140 for technical information about sandwich bodies including ISO interface patterns, mounting instructions, studrods, and studkits.
Sun ISO 05 X, Y, sandwich bodies are furnished with pilot and drain connections. Seal plates are NOT supplied with these bodies, due to the differences in the European and U.S. seal plates. To order seal plates separately see page 141-142.
 Go to www.sunhydraulics.com for more product information.