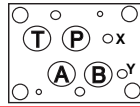


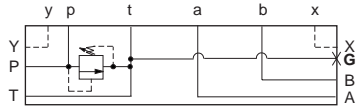
**ISO 07 / CETOP 7 RELIEF VALVES
(SIDE PORTED SUBPLATE / SIDE PORTED SUBPLATE WITH GASKET MOUNTED TANK PORT)**

T-3A Cavity



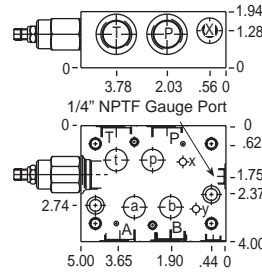
All subplates shown below are 5.0" wide

PILOT OPERATED



Ports A, B, P, T	Ports X, Y	Assembly Model Code*
3/4" NPTF	1/4" NPTF	RPGC-LAN-ZLW
SAE-12	SAE-6	RPGC-LAN-ZLX

*Add modifier /S to order Ductile Iron for pressure rating over 3000 psi.



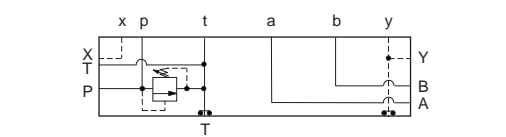
DIRECT ACTING

Function

P to T

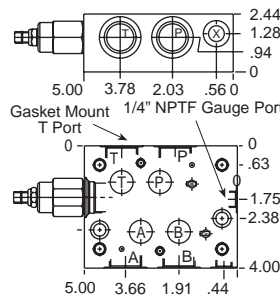
Ports A, B, P, T	Ports X, Y	Assembly Model Code*
3/4" NPTF	1/4" NPTF	RDFA-LAN-ZLW
SAE-12	SAE-6	RDFA-LAN-ZLX

*Add modifier /S to order Ductile Iron for pressure rating over 3000 psi.



Ports A, B, P, T	Ports X, Y	Assembly Model Code*
3/4" NPTF	1/4" NPTF	RPGC-LAN-VTE
SAE-12	SAE-6	RPGC-LAN-VTF

*Add modifier /S to order Ductile Iron for pressure rating over 3000 psi.



Function

P to T

Ports A, B, P, T	Ports X, Y	Assembly Model Code*
3/4" NPTF	1/4" NPTF	RDFA-LAN-VTE
SAE-12	SAE-6	RDFA-LAN-ZLF

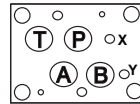
*Add modifier /S to order Ductile Iron for pressure rating over 3000 psi.

NOTES: Page 2 for cartridge models RP*C-*** and RD*A-*** show performance curves, technical tips, and options.
See page 140 for technical information about sandwich bodies including ISO interface patterns, mounting instructions, studrods, and studkits.
Go to www.sunhydraulics.com for more product information and pricing.
Model Codes printed in red are Preferred Products and are readily available.

Sandwich Assemblies

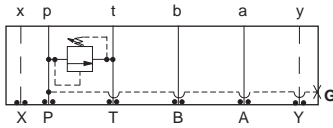
ISO 07 / CETOP 7 RELIEF VALVES

T-3A / T-10A Cavities



All sandwich bodies shown below are 3.50" wide

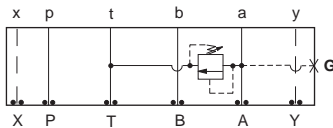
PILOT OPERATED



Assembly Model Code*

RPGC-LAN-CKP

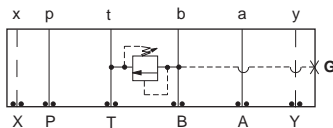
*Add modifier /S to order Ductile Iron for pressure rating over 3000 psi.



Assembly Model Code*

RPGC-LAN-CKA

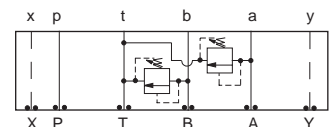
*Add modifier /S to order Ductile Iron for pressure rating over 3000 psi.



Assembly Model Code*

RPGC-LAN-CKB

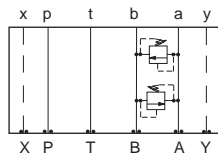
*Add modifier /S to order Ductile Iron for pressure rating over 3000 psi.



Assembly Model Code*

RPGC-LAN-CKX

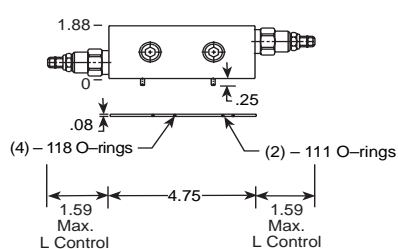
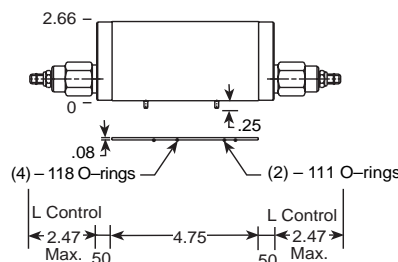
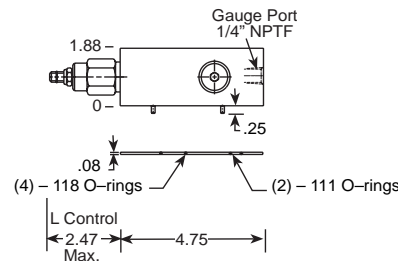
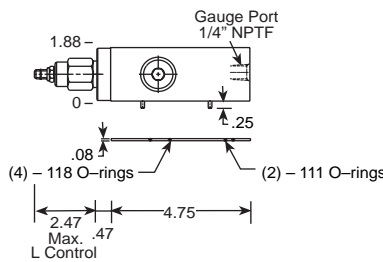
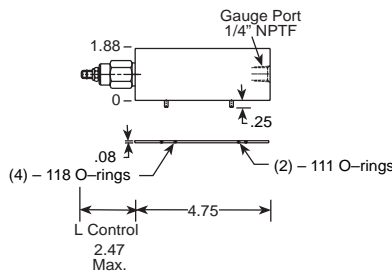
*Add modifier /S to order Ductile Iron for pressure rating over 3000 psi.



Assembly Model Code*

RPEC-LAN-CKY

*Add modifier /S to order Ductile Iron for pressure rating over 3000 psi.



DIRECT ACTING

Function

P to T

Assembly Model Code*

RDFA-LAN-CKP

*Add modifier /S to order Ductile Iron for pressure rating over 3000 psi.

Function

A to T

Assembly Model Code*

RDFA-LAN-CKA

*Add modifier /S to order Ductile Iron for pressure rating over 3000 psi.

Function

B to T

Assembly Model Code*

RDFA-LAN-CKB

*Add modifier /S to order Ductile Iron for pressure rating over 3000 psi.

Function

A and B to T (High Capacity)

Assembly Model Code*

RDFA-LAN-CKX

*Add modifier /S to order Ductile Iron for pressure rating over 3000 psi.

Function

A to B and B to A (Cross-port)

Assembly Model Code*

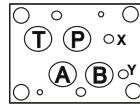
RDDA-LAN-CKY

*Add modifier /S to order Ductile Iron for pressure rating over 3000 psi.

NOTES: Page 2 for cartridge models RP*C-*** and RD*A-*** show performance curves, technical tips, and options. See page 140 for technical information about sandwich bodies including ISO interface patterns, mounting instructions, studrods, and studkits. Go to www.sunhydraulics.com for more product information. Model Codes printed in red are Preferred Products and are readily available.

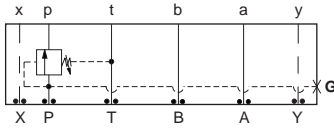
ISO 07 / CETOP 7 SEQUENCE VALVES

T-17A Cavity



All sandwich bodies shown below are 3.50" wide

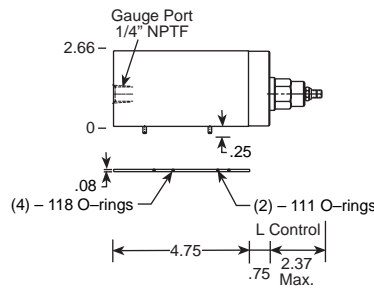
PILOT OPERATED



Assembly Model Code*

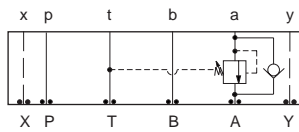
RSHC-LAN-BKW

*Add modifier /S to order Ductile Iron for pressure rating over 3000 psi.



Function

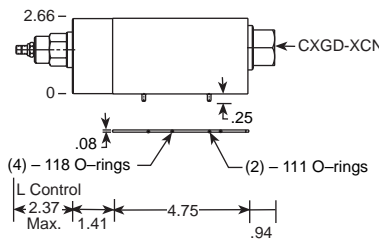
In to P



Assembly Model Code*

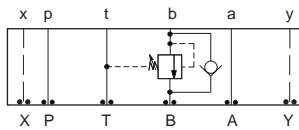
RSHC-LAN-BK4

*Add modifier /S to order Ductile Iron for pressure rating over 3000 psi.



Function

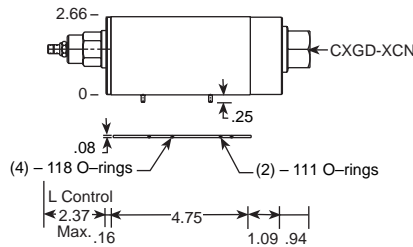
In to A (Reverse Free Flow Check)



Assembly Model Code*

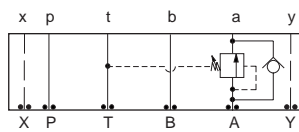
RSHC-LAN-BK5

*Add modifier /S to order Ductile Iron for pressure rating over 3000 psi.



Function

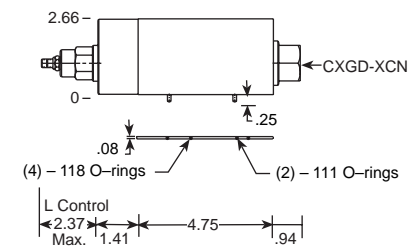
In to B (Reverse Free Flow Check)



Assembly Model Code*

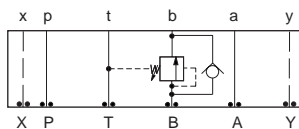
RSHC-LAN-BK6

*Add modifier /S to order Ductile Iron for pressure rating over 3000 psi.



Function

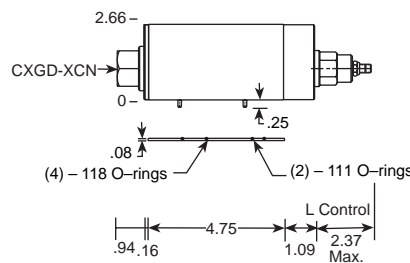
Out of A (Reverse Free Flow Check)



Assembly Model Code*

RSHC-LAN-BK7

*Add modifier /S to order Ductile Iron for pressure rating over 3000 psi.



Function

Out of B (Reverse Free Flow Check)

NOTES: Page 20 for cartridge model RS*C-*** show performance curves, technical tips, and options.

See page 140 for technical information about sandwich bodies including ISO interface patterns, mounting instructions, studrods, and studkits.

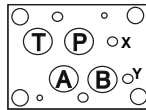
Go to www.sunhydraulics.com for more product information.

Model Codes printed in red are Preferred Products and are readily available.

Sandwich Assemblies

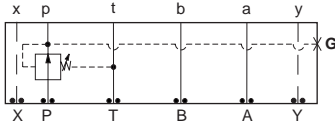
ISO 07 / CETOP 7 REDUCING VALVES

T-17A Cavity



All sandwich bodies shown below are 3.50" wide

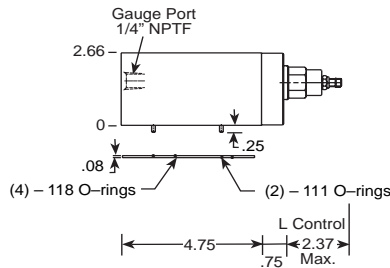
PILOT OPERATED



Assembly Model Code*

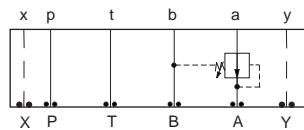
PBHB-LAN-BKP

*Add modifier /S to order Ductile Iron for pressure rating over 3000 psi.



Function

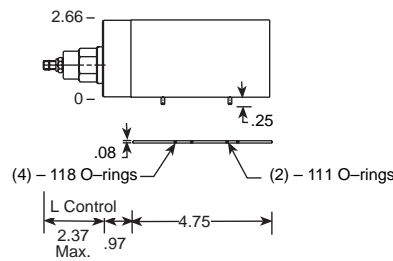
On P Drained to T



Assembly Model Code*

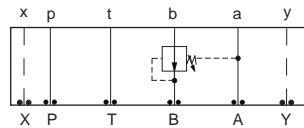
PBHB-LAN-BKA

*Add modifier /S to order Ductile Iron for pressure rating over 3000 psi.



Function

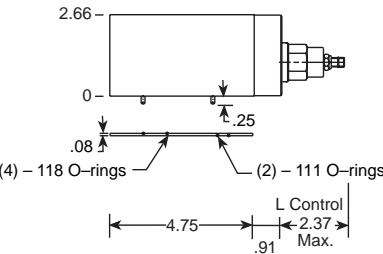
On A Drained to B



Assembly Model Code*

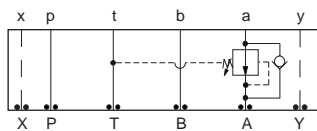
PBHB-LAN-BKB

*Add modifier /S to order Ductile Iron for pressure rating over 3000 psi.



Function

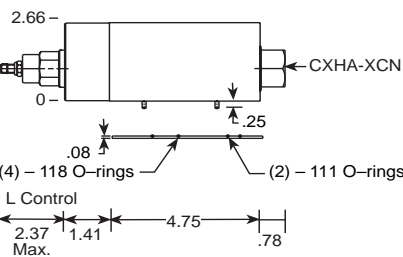
On B Drained to A



Assembly Model Code*

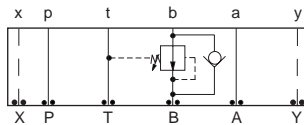
PBHB-LAN-BK2

*Add modifier /S to order Ductile Iron for pressure rating over 3000 psi.



Function

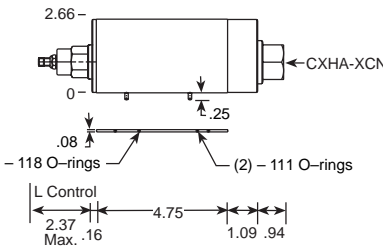
On A Drain to T
(Reverse Free Flow Check)



Assembly Model Code*

PBHB-LAN-BKJ

*Add modifier /S to order Ductile Iron for pressure rating over 3000 psi.



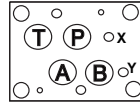
Function

On B Drain to T
(Reverse Free Flow Check)

NOTES: Page 34 for cartridge model PB*B-*** and page 102 for CX*A-*** shows performance curves, technical tips, and options. See page 140 for technical information about sandwich bodies including ISO interface patterns, mounting instructions, studrods, and studkits. Go to www.sunhydraulics.com for more product information. Model Codes printed in red are Preferred Products and are readily available.

ISO 07 / CETOP 7 REDUCING / RELIEVING VALVES

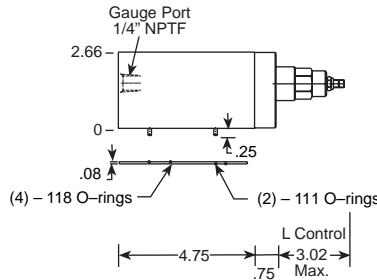
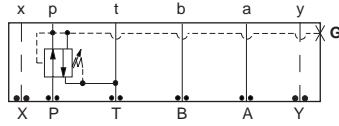
T-17A Cavity



All sandwich bodies shown below are 3.50" wide

PILOT OPERATED

DIRECT ACTING



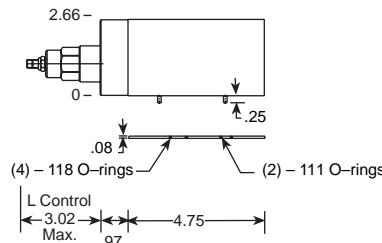
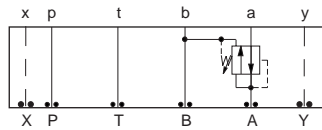
Function
On P Tank to T Drained to T

Assembly Model Code*
PPHB-LAN-BKP

Assembly Model Code*
PRHB-LAN-BKP

*Add modifier /S to order Ductile Iron for pressure rating over 3000 psi.

*Add modifier /S to order Ductile Iron for pressure rating over 3000 psi.



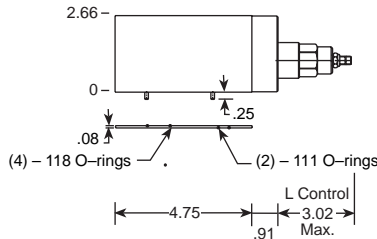
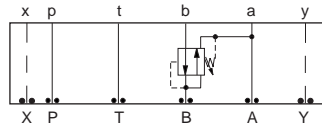
Function
On A Tank to B Drained to B

Assembly Model Code*
PPHB-LAN-BKA

Assembly Model Code*
PRHB-LAN-BKA

*Add modifier /S to order Ductile Iron for pressure rating over 3000 psi.

*Add modifier /S to order Ductile Iron for pressure rating over 3000 psi.



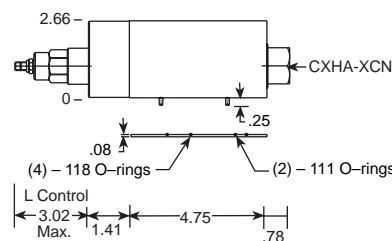
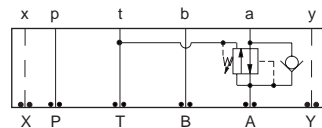
Function
On B Tank to A Drained to A

Assembly Model Code*
PPHB-LAN-BKB

Assembly Model Code*
PRHB-LAN-BKB

*Add modifier /S to order Ductile Iron for pressure rating over 3000 psi.

*Add modifier /S to order Ductile Iron for pressure rating over 3000 psi.



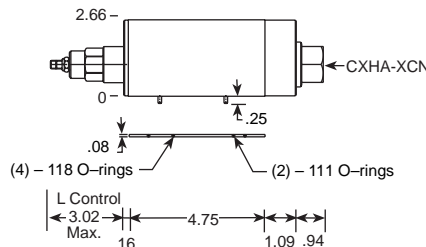
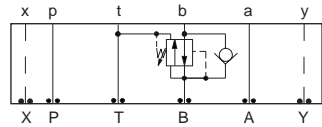
Function
On A Tank to T Drained to T (Reverse Free Flow Check)

Assembly Model Code*
PPHB-LAN-BK2

Assembly Model Code*
PRHB-LAN-BK2

*Add modifier /S to order Ductile Iron for pressure rating over 3000 psi.

*Add modifier /S to order Ductile Iron for pressure rating over 3000 psi.



Function
On B Tank to T Drained to T (Reverse Free Flow Check)

Assembly Model Code*
PPHB-LAN-BKJ

Assembly Model Code*
PRHB-LAN-BKJ

*Add modifier /S to order Ductile Iron for pressure rating over 3000 psi.

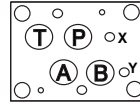
*Add modifier /S to order Ductile Iron for pressure rating over 3000 psi.

NOTES: Page 42 for cartridge models PP*B-*** and PR*B-***, and page 102 for CX*A-*** show performance curves, technical tips, and options. See page 140 for technical information about sandwich bodies including ISO interface patterns, mounting instructions, studrods, and studkits. Go to www.sunhydraulics.com for more product information. Model Codes printed in red are Preferred Products and are readily available.

Sandwich Assemblies

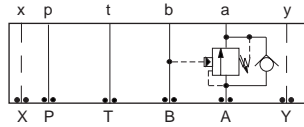
ISO 07 / CETOP 7 COUNTERBALANCE VALVES

T-17A Cavity



All sandwich bodies shown below are 3.50" wide

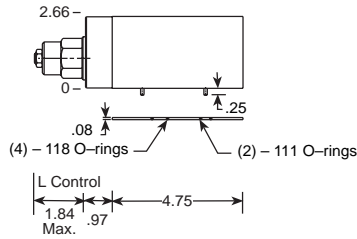
PILOT RATIOS
3:1, 2:1 and 1.5:1



Assembly
Model Code*

CBG*-LHN-BKA

*Add modifier /S to order Ductile Iron for pressure rating over 3000 psi.



PILOT RATIOS
2.3:1, 4.5:1 and 10:1

Function

On A Pilot from B

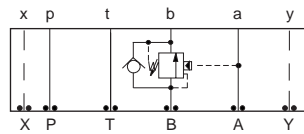
Assembly
Model Code*

CBG*-LJN-BKA

*Add modifier /S to order Ductile Iron for pressure rating over 3000 psi.

Function

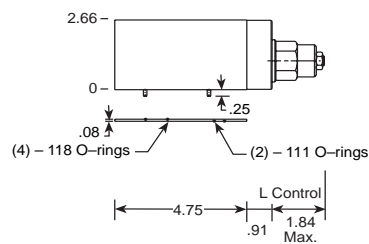
On B Pilot from A



Assembly
Model Code*

CBG*-LHN-BKB

*Add modifier /S to order Ductile Iron for pressure rating over 3000 psi.



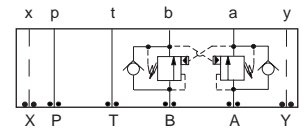
Assembly
Model Code*

CBG*-LJN-BKB

*Add modifier /S to order Ductile Iron for pressure rating over 3000 psi.

Function

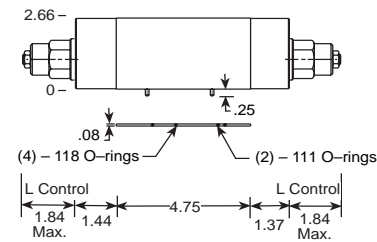
On A and B (Cross-piloted)



Assembly
Model Code*

CBG*-LHN-BKY

*Add modifier /S to order Ductile Iron for pressure rating over 3000 psi.



Assembly
Model Code*

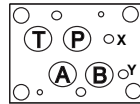
CBG*-LJN-BKY

*Add modifier /S to order Ductile Iron for pressure rating over 3000 psi.

NOTES: Page 50 for cartridge model CB**.* show performance curves, technical tips, and options.
See page 140 for technical information about sandwich bodies including ISO interface patterns, mounting instructions, studrods, and studkits.
Go to www.sunhydraulics.com for more product information.
Model Codes printed in red are Preferred Products and are readily available.

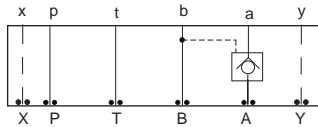
ISO 07 / CETOP 7 PILOT-TO-OPEN CHECK VALVES

T-17A Cavity



All sandwich bodies shown below are 3.50" wide

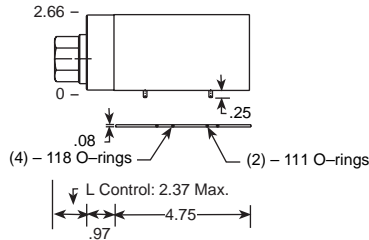
PILOT OPERATED



Assembly Model Code*

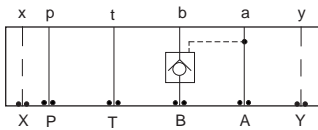
CKGB-XCN-BKA

*Add modifier /S to order Ductile Iron for pressure rating over 3000 psi.



Function

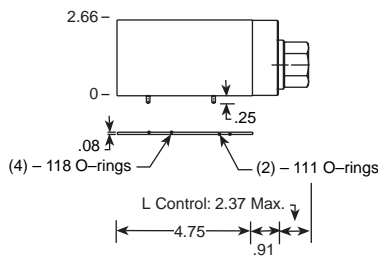
On A Pilot from B



Assembly Model Code*

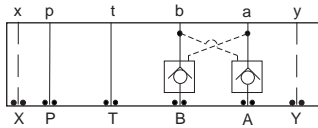
CKGB-XCN-BKB

*Add modifier /S to order Ductile Iron for pressure rating over 3000 psi.



Function

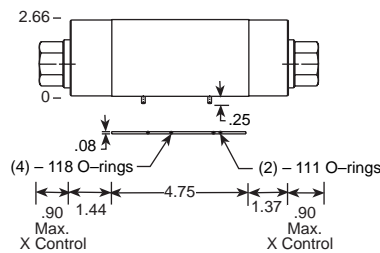
On B Pilot from A



Assembly Model Code*

CKGB-XCN-BKY

*Add modifier /S to order Ductile Iron for pressure rating over 3000 psi.



Function

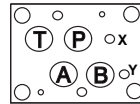
On A and B (Cross-piloted)

NOTES: Page 78 for cartridge model CK**_*** show performance curves, technical tips, and options.
 See page 140 for technical information about sandwich bodies including ISO interface patterns, mounting instructions, studrods, and studkits.
 Go to www.sunhydraulics.com for more product information.
 Model Codes printed in red are Preferred Products and are readily available.

Sandwich Assemblies

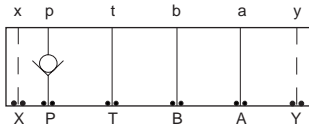
ISO 07 / CETOP 7 CHECK VALVES

T-5A/T-16A Cavity



All sandwich bodies shown below are 3.50" wide

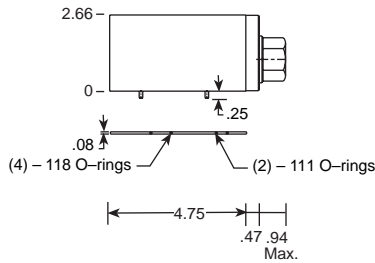
CHECK VALVE



Assembly Model Code*

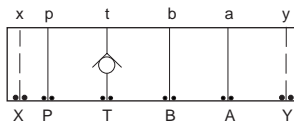
CXHA-XCN-DKP

*Add modifier **/S** to order Ductile Iron for pressure rating over 3000 psi.



Function

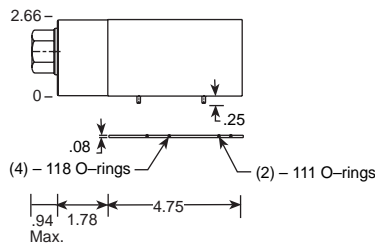
On **P**



Assembly Model Code*

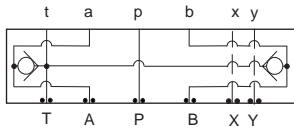
CXHA-XCN-DKT

*Add modifier **/S** to order Ductile Iron for pressure rating over 3000 psi.



Function

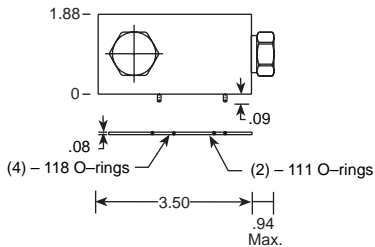
On **T** Free Flow Out of Valve



Assembly Model Code*

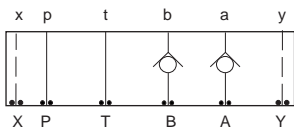
CXFA-XAN-DKX

*Add modifier **/S** to order Ductile Iron for pressure rating over 3000 psi.



Function

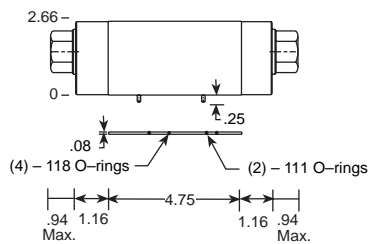
T to **A** and **B**



Assembly Model Code*

CXHA-XCN-DKZ

*Add modifier **/S** to order Ductile Iron for pressure rating over 3000 psi.



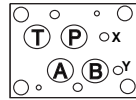
Function

On **A** and **B**, Free Flow Out of Valve

NOTES: Page 102 for cartridge models CX*A-*** show performance curves, technical tips, and options. See page 140 for technical information about sandwich bodies including ISO interface patterns, mounting instructions, studrods, and studkits. Go to www.sunhydraulics.com for more product information. Model Codes printed in red are Preferred Products and are readily available.

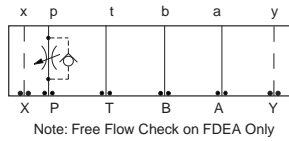
ISO 07 / CETOP 7 FLOW CONTROL VALVES

T-16A Cavity



All sandwich bodies shown below are 3.50" wide

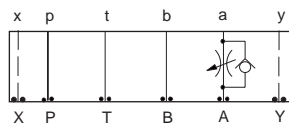
FULLY ADJUSTABLE NEEDLE



Assembly Model Code*
NFEC-LEN-DKP

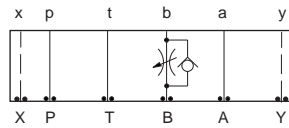
*Add modifier /S to order Ductile Iron for pressure rating over 3000 psi.

FULLY ADJUSTABLE NEEDLE WITH FREE FLOW CHECK



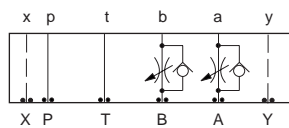
Assembly Model Code*
NCFB-L*N-DKA

*Add modifier /S to order Ductile Iron for pressure rating over 3000 psi.



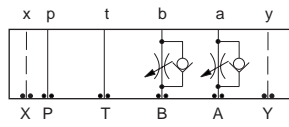
Assembly Model Code*
NCFB-L*N-DKB

*Add modifier /S to order Ductile Iron for pressure rating over 3000 psi.



Assembly Model Code*
NCFB-L*N-DKY

*Add modifier /S to order Ductile Iron for pressure rating over 3000 psi.



Assembly Model Code*
NCFB-L*N-DKZ

*Add modifier /S to order Ductile Iron for pressure rating over 3000 psi.

FULLY ADJUSTABLE PRESSURE COMPENSATED WITH FREE FLOW CHECK

Function
Meter-In P

Assembly Model Code*
FDEA-LAN-DKP

*Add modifier /S to order Ductile Iron for pressure rating over 3000 psi.

Function
Meter-Out A

Assembly Model Code*
FDEA-LAN-DKA

*Add modifier /S to order Ductile Iron for pressure rating over 3000 psi.

Function
Meter-Out B

Assembly Model Code*
FDEA-LAN-DKB

*Add modifier /S to order Ductile Iron for pressure rating over 3000 psi.

Function
Meter-Out A and B

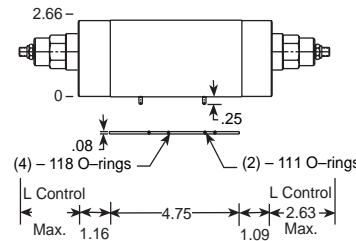
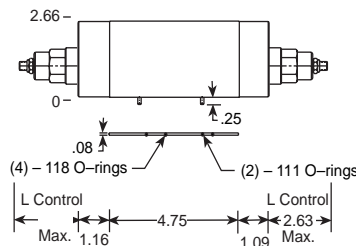
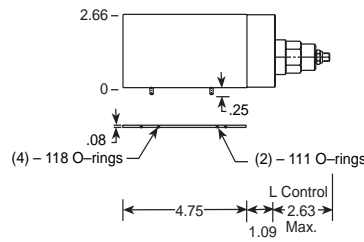
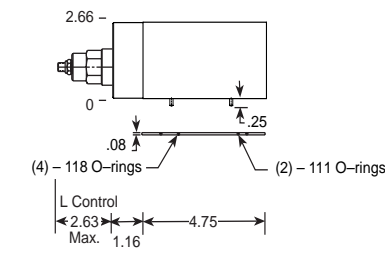
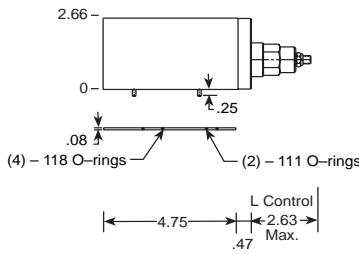
Assembly Model Code*
FDEA-LAN-DKY

*Add modifier /S to order Ductile Iron for pressure rating over 3000 psi.

Function
Meter-In A and B

Assembly Model Code*
FDEA-LAN-DKZ

*Add modifier /S to order Ductile Iron for pressure rating over 3000 psi.

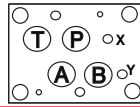


NOTES: Page 110 for cartridge models NF*C-*** and NC*B-***, and page 126 for FD*A show performance curves, technical tips, and options. See page 140 for technical information about sandwich bodies including ISO interface patterns, mounting instructions, studrods, and studkits. Go to www.sunhydraulics.com for more product information. Model Codes printed in red are Preferred Products and are readily available.

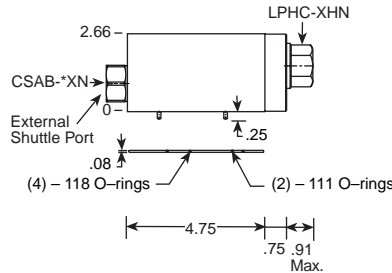
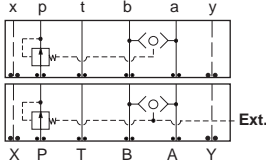
Sandwich Assemblies

**ISO 07 / CETOP 7 CIRCUIT SAVER VALVES
(PRESSURE COMPENSATOR / REGENERATIVE)**

T-13A Cavity/T-17A Cavity



All sandwich bodies shown below are 3.50" wide



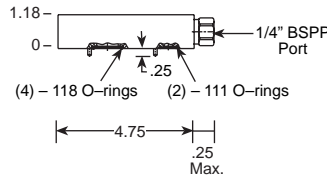
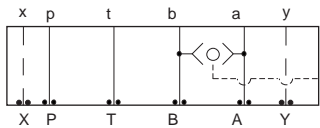
Function

YFFE: Pressure Compensator (Restrictive)

YFFF: With Load Sensing Pressure Compensator (Restrictive)

External Shuttle Port	Assembly Model Code*
None	YFFE-XHN-AB
SAE-4	YFFF-XHN-AB

*Add modifier /S to order Ductile Iron for pressure rating over 3000 psi.

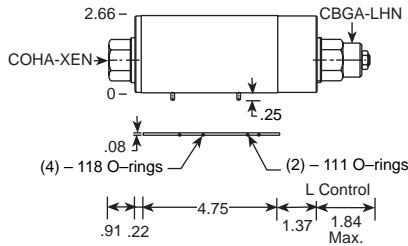
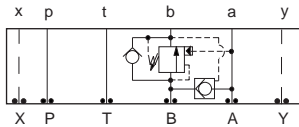


Function

Shuttle A and B (Output External)

Assembly Model Code*
CSAA-BXN-DKS

*Add modifier /S to order Ductile Iron for pressure rating over 3000 psi.

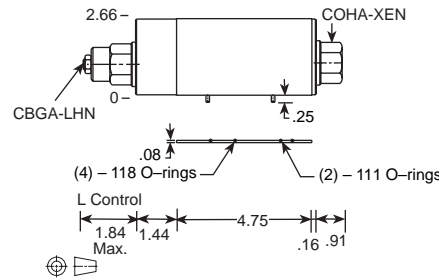
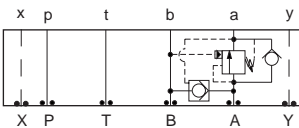


Function

B to A Regenerative

Assembly Model Code*
YDFG-LHN-AB

*Add modifier /S to order Ductile Iron for pressure rating over 3000 psi.



Function

A to B Regenerative

Assembly Model Code*
YDFE-LHN-AB

*Add modifier /S to order Ductile Iron for pressure rating over 3000 psi.

NOTES: Page 50 for cartridge model CB*A-*** shows performance curves, technical tips, and options.
See page 140 for technical information about sandwich bodies including ISO interface patterns, mounting instructions, studrods, and studkits.
Go to www.sunhydraulics.com for more product information.