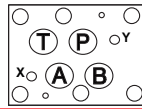


ISO 08 / CETOP 8 RELIEF VALVES
(SIDE PORTED SUBPLATE / REAR PORTED SUBPLATE / SIDE PORTED SUBPLATE WITH GASKET MOUNTED TANK PORT)

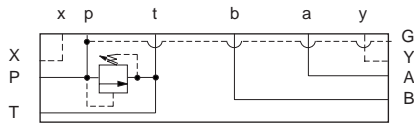
T-3A Cavity



All subplates shown below are 5.94" wide

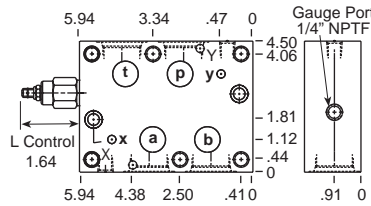
PILOT OPERATED

DIRECT ACTING



Ports A, B, P, T	Ports X, Y	Assembly Model Code*
1" NPTF	1/4" NPTF	RPGC-LAN-CSE
SAE-16	SAE-6	RPGC-LAN-CSM

*Add modifier /S to order Ductile Iron for pressure rating over 3000 psi.

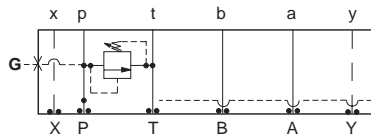


Function

P to T (Side Ports)

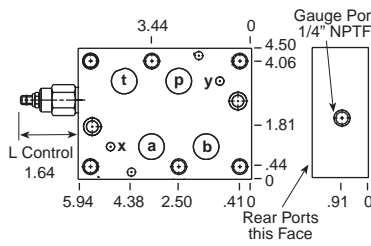
Ports A, B, P, T	Ports X, Y	Assembly Model Code*
1" NPTF	1/4" NPTF	RDFA-LAN-CSE
SAE-16	SAE-6	RDFA-LAN-CSM

*Add modifier /S to order Ductile Iron for pressure rating over 3000 psi.



Ports A, B, P, T	Ports X, Y	Assembly Model Code*
1" NPTF	1/4" NPTF	RPGC-LAN-CRE
SAE-16	SAE-6	RPGC-LAN-CRM

*Add modifier /S to order Ductile Iron for pressure rating over 3000 psi.

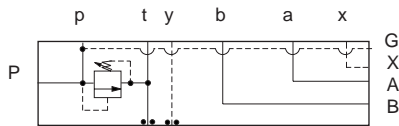


Function

P to T (Rear Ports)

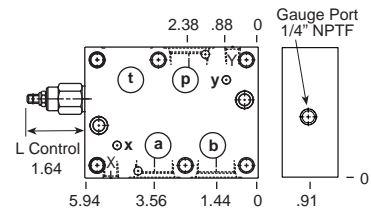
Ports A, B, P, T	Ports X, Y	Assembly Model Code*
1" NPTF	1/4" NPTF	RDFA-LAN-CRE
SAE-16	SAE-6	RDFA-LAN-CRM

*Add modifier /S to order Ductile Iron for pressure rating over 3000 psi.



Ports A, B, P, T	Ports X, Y	Assembly Model Code*
1" NPTF	1/4" NPTF	RPGC-LAN-CTE
SAE-16 (T) 1" NPTF	SAE-6	RPGC-LAN-CTM

*Add modifier /S to order Ductile Iron for pressure rating over 3000 psi.



Function

P to T (Gasket Mounted T and Y Port, Other Ports on Side)

Ports A, B, P, T	Ports X, Y	Assembly Model Code*
1" NPTF	1/4" NPTF	RDFA-LAN-CTE
SAE-16 (T) 1" NPTF	SAE-6	RDFA-LAN-CTM

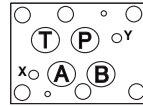
*Add modifier /S to order Ductile Iron for pressure rating over 3000 psi.

NOTES: Page 2 for cartridge models RP*C-*** and RD*A-*** show performance curves, technical tips, and options.
 See page 140 for technical information about sandwich bodies including ISO interface patterns, mounting instructions, studrods, and studkits.
 Go to www.sunhydraulics.com for more product information and pricing.
 Model Codes printed in red are Preferred Products and are readily available.

Sandwich Assemblies

ISO 08 / CETOP 8 RELIEF VALVES

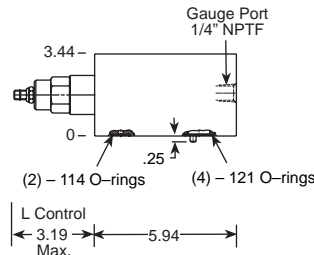
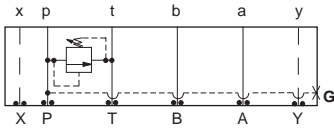
T-16A Cavity



All sandwich bodies shown below are 4.50" wide

PILOT OPERATED

DIRECT ACTING



Function

P to T (High Capacity)

Assembly Model Code*

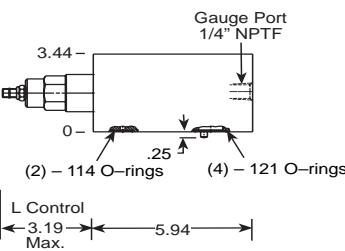
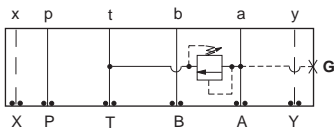
RPIC-LAN-CDO

*Add modifier /S to order Ductile Iron for pressure rating over 3000 psi.

Assembly Model Code*

RDHA-LAN-CDO

*Add modifier /S to order Ductile Iron for pressure rating over 3000 psi.



Function

A to T (High Capacity)

Assembly Model Code*

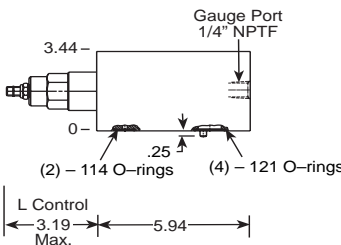
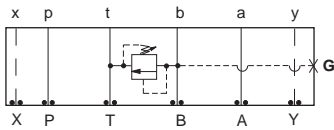
RPIC-LAN-CDC

*Add modifier /S to order Ductile Iron for pressure rating over 3000 psi.

Assembly Model Code*

RDHA-LAN-CDC

*Add modifier /S to order Ductile Iron for pressure rating over 3000 psi.



Function

B to T (High Capacity)

Assembly Model Code*

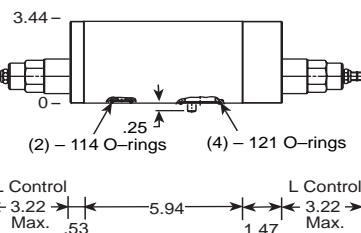
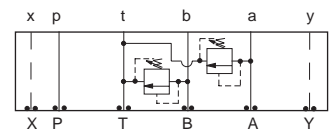
RPIC-LAN-CDD

*Add modifier /S to order Ductile Iron for pressure rating over 3000 psi.

Assembly Model Code*

RDHA-LAN-CDD

*Add modifier /S to order Ductile Iron for pressure rating over 3000 psi.



Function

A and B to T (High Capacity)

Assembly Model Code*

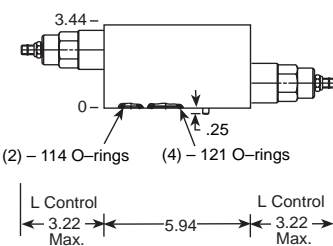
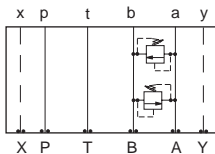
RPIC-LAN-CDZ

*Add modifier /S to order Ductile Iron for pressure rating over 3000 psi.

Assembly Model Code*

RDHA-LAN-CDZ

*Add modifier /S to order Ductile Iron for pressure rating over 3000 psi.



Function

A to B and B to A (High Capacity) (Cross-port)

Assembly Model Code*

RPIC-LAN-CDW

*Add modifier /S to order Ductile Iron for pressure rating over 3000 psi.

Assembly Model Code*

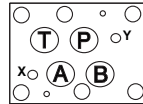
RDHA-LAN-CDW

*Add modifier /S to order Ductile Iron for pressure rating over 3000 psi.

NOTES: Page 2 for cartridge models RP*C-*** and RD*A-*** show performance curves, technical tips, and options.
 See page 140 for technical information about sandwich bodies including ISO interface patterns, mounting instructions, studrods, and studkits.
 Go to www.sunhydraulics.com for more product information.
 Model Codes printed in red are Preferred Products and are readily available.

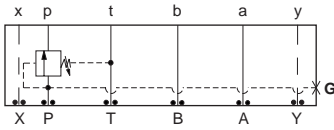
ISO 08 / CETOP 8 SEQUENCE VALVES

T-17A Cavity



All sandwich bodies shown below are 4.50" wide

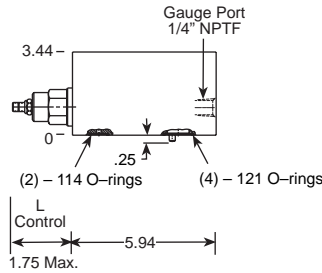
PILOT OPERATED



Assembly Model Code*

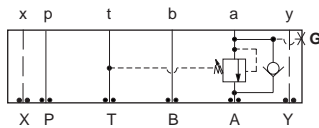
RSHC-LAN-HBW

*Add modifier /S to order Ductile Iron for pressure rating over 3000 psi.



Function

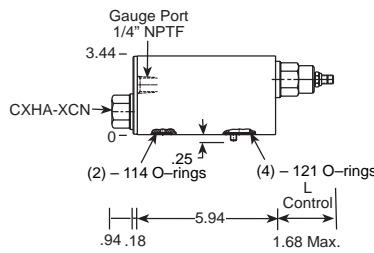
In to P



Assembly Model Code*

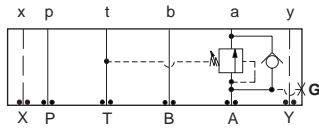
RSHC-LAN-HB4

*Add modifier /S to order Ductile Iron for pressure rating over 3000 psi.



Function

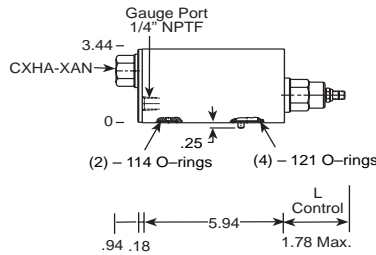
In to A (Reverse Free Flow Check)



Assembly Model Code*

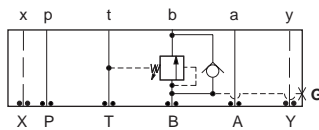
RSHC-LAN-HB6

*Add modifier /S to order Ductile Iron for pressure rating over 3000 psi.



Function

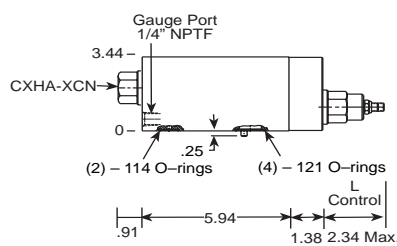
Out of A (Reverse Free Flow Check)



Assembly Model Code*

RSHC-LAN-HB7

*Add modifier /S to order Ductile Iron for pressure rating over 3000 psi.



Function

Out of B (Reverse Free Flow Check)

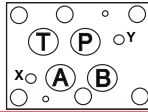
NOTES: Pages 20 for cartridge models RS*C-*** and page 102 for CX*A-*** show performance curves, technical tips, and options. See page 140 for technical information about sandwich bodies including ISO interface patterns, mounting instructions, studrods, and studkits. Go to www.sunhydraulics.com for more product information. Model Codes printed in red are Preferred Products and are readily available.

Sandwich Assemblies

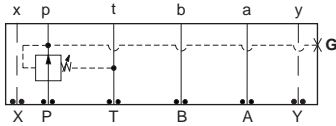
ISO 08 / CETOP 8 REDUCING VALVES

T-19A Cavity/T-17A Cavity

PILOT OPERATED



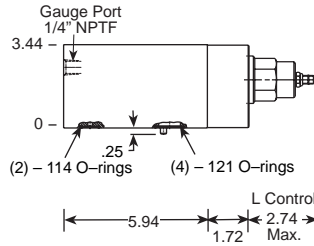
All sandwich bodies shown below are 4.50" wide



Assembly Model Code*

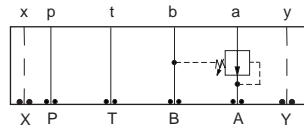
PBJB-LAN-HBO

*Add modifier /S to order Ductile Iron for pressure rating over 3000 psi.



Function

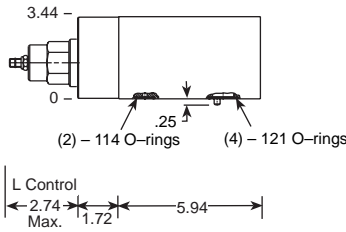
On P Drained to T (High Capacity)



Assembly Model Code*

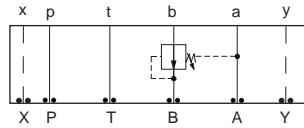
PBJB-LAN-HBA

*Add modifier /S to order Ductile Iron for pressure rating over 3000 psi.



Function

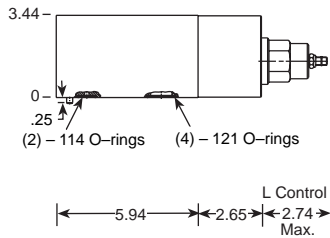
On A Drained to B (High Capacity)



Assembly Model Code*

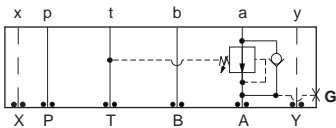
PBJB-LAN-HBB

*Add modifier /S to order Ductile Iron for pressure rating over 3000 psi.



Function

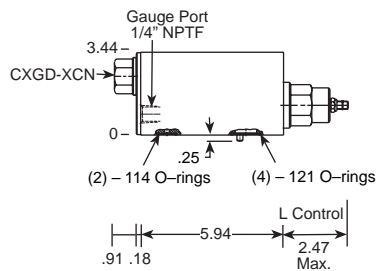
On B Drained to A (High Capacity)



Assembly Model Code*

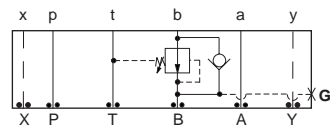
PBHB-LAN-HBK

*Add modifier /S to order Ductile Iron for pressure rating over 3000 psi.



Function

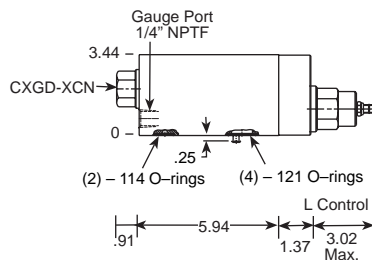
On A Drain to T (Reverse Free Flow Check)



Assembly Model Code*

PBHB-LAN-HBJ

*Add modifier /S to order Ductile Iron for pressure rating over 3000 psi.



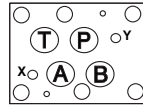
Function

On B Drain to T (Reverse Free Flow Check)

NOTES: Page 34 for cartridge model PBJB-*** and page 102 for CX*D-*** show performance curves, technical tips, and options. See page 140 for technical information about sandwich bodies including ISO interface patterns, mounting instructions, studrods, and studkits. Go to www.sunhydraulics.com for more product information. Model Codes printed in red are Preferred Products and are readily available.

ISO 08 / CETOP 8 REDUCING / RELIEF VALVES

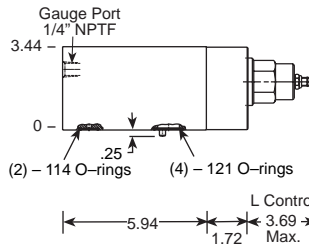
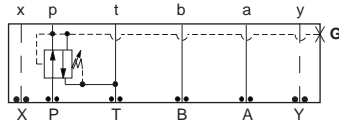
T-19A Cavity/T-17A Cavity



All sandwich bodies shown below are 4.50" wide

PILOT OPERATED

DIRECT ACTING



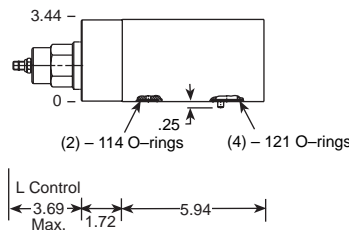
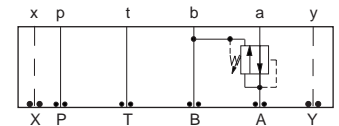
Function
On P Tank to T Drained to T (High Capacity)

Assembly Model Code*
PPJB-LAN-HBO

Assembly Model Code*
PRJB-LAN-HBO

*Add modifier /S to order Ductile Iron for pressure rating over 3000 psi.

*Add modifier /S to order Ductile Iron for pressure rating over 3000 psi.



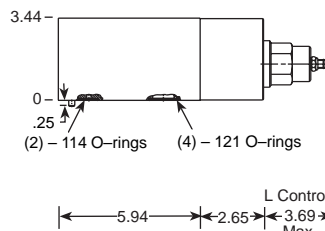
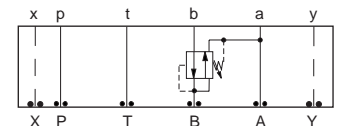
Function
On A Tank to B Drained to B (High Capacity)

Assembly Model Code*
PPJB-LAN-HBA

Assembly Model Code*
PRJB-LAN-HBA

*Add modifier /S to order Ductile Iron for pressure rating over 3000 psi.

*Add modifier /S to order Ductile Iron for pressure rating over 3000 psi.



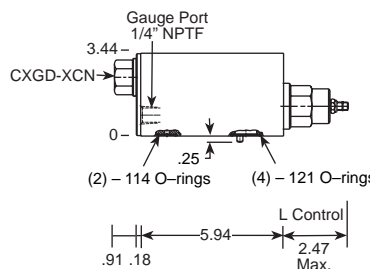
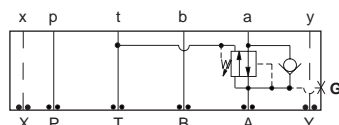
Function
On B Tank to A Drained to A (High Capacity)

Assembly Model Code*
PPJB-LAN-HBB

Assembly Model Code*
PRJB-LAN-HBB

*Add modifier /S to order Ductile Iron for pressure rating over 3000 psi.

*Add modifier /S to order Ductile Iron for pressure rating over 3000 psi.



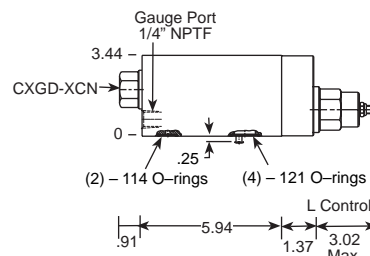
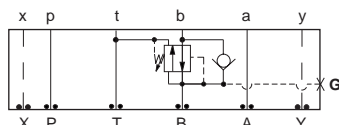
Function
On A Tank to T Drained to T (Reverse Free Flow Check)

Assembly Model Code*
PPHB-LAN-HBK

Assembly Model Code*
PRHB-LAN-HBK

*Add modifier /S to order Ductile Iron for pressure rating over 3000 psi.

*Add modifier /S to order Ductile Iron for pressure rating over 3000 psi.



Function
On B Tank to T Drained to T (Reverse Free Flow Check)

Assembly Model Code*
PPHB-LAN-HBJ

Assembly Model Code*
PRHB-LAN-HBJ

*Add modifier /S to order Ductile Iron for pressure rating over 3000 psi.

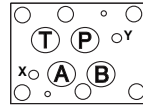
*Add modifier /S to order Ductile Iron for pressure rating over 3000 psi.

NOTES: Page 42 for cartridge model PP*B-*** and PR*B-***, and page 102 for CX*D-*** shows performance curves, technical tips, and options. See page 140 for technical information about sandwich bodies including ISO interface patterns, mounting instructions, studrods, and studkits. Go to www.sunhydraulics.com for more product information. Model Codes printed in red are Preferred Products and are readily available.

Sandwich Assemblies

ISO 08 / CETOP 8 COUNTERBALANCE VALVES

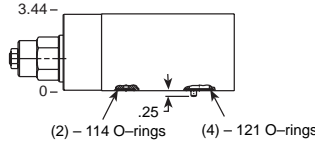
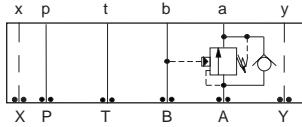
T-19A Cavity



All sandwich bodies shown below are 4.50" wide

PILOT RATIOS
3:1, 1.5:1 and 2:1

PILOT RATIOS
2.3:1, 4.5:1 and 10:1



Function

On **A** Pilot from **B** (High Capacity)

Assembly Model Code*

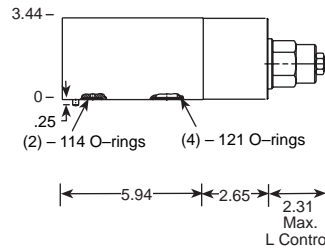
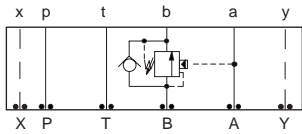
CBI*-LHN-HBA

*Add modifier **/S** to order Ductile Iron for pressure rating over 3000 psi.

Assembly Model Code*

CBI*-LJN-HBA

*Add modifier **/S** to order Ductile Iron for pressure rating over 3000 psi.



Function

On **B** Pilot from **A** (High Capacity)

Assembly Model Code*

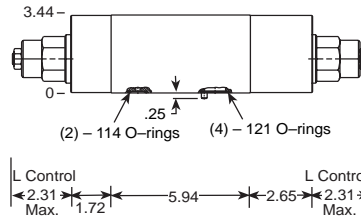
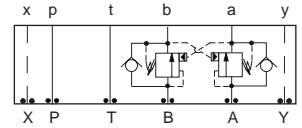
CBI*-LHN-HBB

*Add modifier **/S** to order Ductile Iron for pressure rating over 3000 psi.

Assembly Model Code*

CBI*-LJN-HBB

*Add modifier **/S** to order Ductile Iron for pressure rating over 3000 psi.



Function

On **A** and **B**
(Cross-Piloted) (High Capacity)

Assembly Model Code*

CBI*-LHN-HBY

*Add modifier **/S** to order Ductile Iron for pressure rating over 3000 psi.

Assembly Model Code*

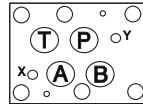
CBI*-LJN-HBY

*Add modifier **/S** to order Ductile Iron for pressure rating over 3000 psi.

NOTES: Page 50 for cartridge model CB**-* show performance curves, technical tips, and options.
See page 140 for technical information about sandwich bodies including ISO interface patterns, mounting instructions, studrods, and studkits.
Go to www.sunhydraulics.com for more product information.
Model Codes printed in red are Preferred Products and are readily available.

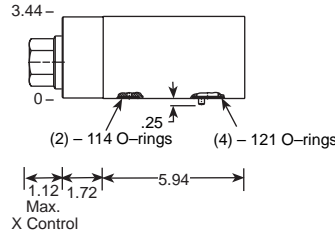
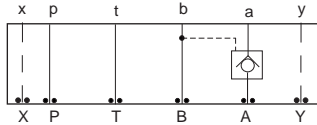
ISO 08 / CETOP 8 PILOT-TO-OPEN CHECK VALVES

T-19A Cavity



All sandwich bodies shown below are 4.50" wide

PILOT OPERATED

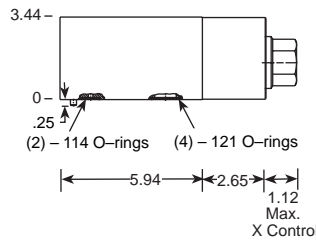
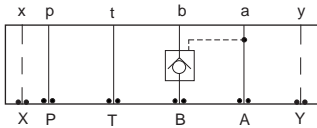


Function

On A Pilot from B (High Capacity)

Assembly Model Code*
CKIB-XCN-HBA

*Add modifier /S to order Ductile Iron for pressure rating over 3000 psi.

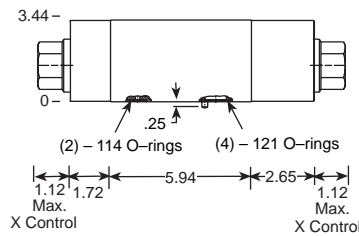
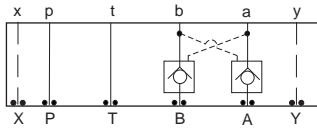


Function

On B Pilot from A (High Capacity)

Assembly Model Code*
CKIB-XCN-HBB

*Add modifier /S to order Ductile Iron for pressure rating over 3000 psi.



Function

On A and B Cross-Piloted (High Capacity)

Assembly Model Code*
CKIB-XCN-HBY

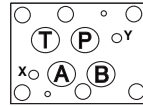
*Add modifier /S to order Ductile Iron for pressure rating over 3000 psi.

NOTES: Page 78 for cartridge model CK**_*** show performance curves, technical tips, and options.
See page 140 for technical information about sandwich bodies including ISO interface patterns, mounting instructions, studrods, and studkits.
Go to www.sunhydraulics.com for more product information.
Model Codes printed in red are Preferred Products and are readily available.

Sandwich Assemblies

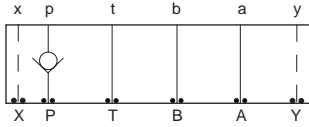
ISO 08 / CETOP 8 CHECK VALVES

T-18A Cavity/T-16A Cavity



All sandwich bodies shown below are 4.50" wide

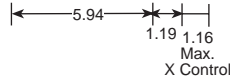
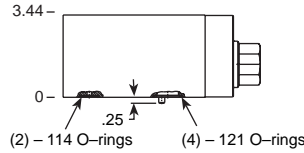
CHECK VALVE



Assembly Model Code*

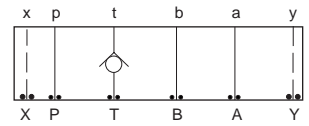
CXJA-XCN-IBO

*Add modifier /S to order Ductile Iron for pressure rating over 3000 psi.



Function

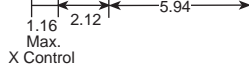
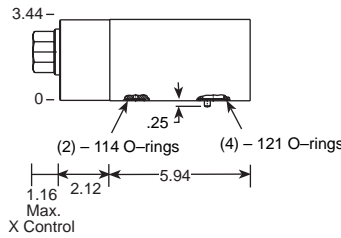
On **P** (High Capacity)



Assembly Model Code*

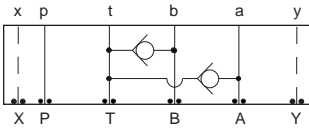
CXJA-XCN-IBV

*Add modifier /S to order Ductile Iron for pressure rating over 3000 psi.



Function

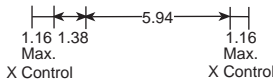
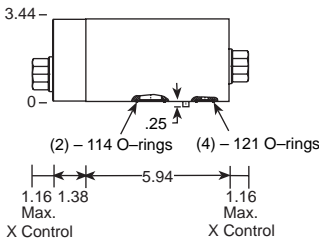
On **T** (High Capacity)



Assembly Model Code*

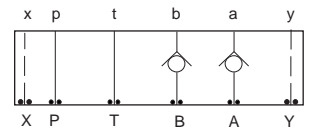
CXHA-XAN-CDV

*Add modifier /S to order Ductile Iron for pressure rating over 3000 psi.



Function

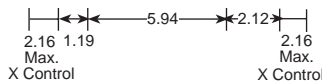
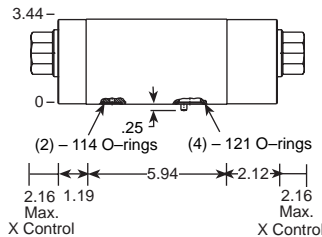
T to A and B



Assembly Model Code*

CXJA-XCN-IBZ

*Add modifier /S to order Ductile Iron for pressure rating over 3000 psi.



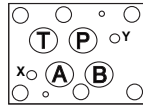
Function

On **A** and **B** Free Flow Out of Valve (High Capacity)

NOTES: Page 102 for cartridge model CX*A-*** shows performance curves, technical tips, and options. See page 140 for technical information about sandwich bodies including ISO interface patterns, mounting instructions, studrods, and studkits. Go to www.sunhydraulics.com for more product information. Model Codes printed in red are Preferred Products and are readily available.

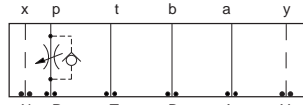
ISO 08 / CETOP 8 FLOW CONTROL VALVES

T-18A Cavity



All sandwich bodies shown below are 4.50" wide

FULLY ADJUSTABLE NEEDLE

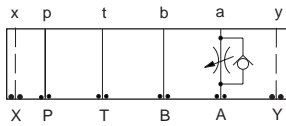


Note: Free Flow Check on FDFA Only

Assembly Model Code*
NFFC-LGN-IBO

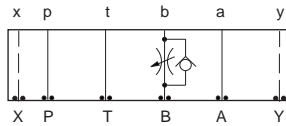
*Add modifier /S to order Ductile Iron for pressure rating over 3000 psi.

FULLY ADJUSTABLE NEEDLE WITH FREE FLOW CHECK



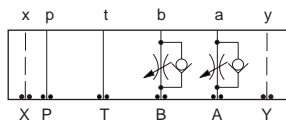
Assembly Model Code*
NCGB-LCN-IBE

*Add modifier /S to order Ductile Iron for pressure rating over 3000 psi.



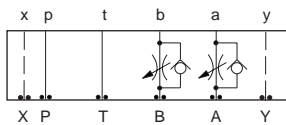
Assembly Model Code*
NCGB-LCN-IBF

*Add modifier /S to order Ductile Iron for pressure rating over 3000 psi.



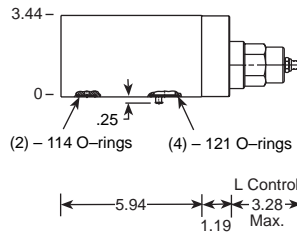
Assembly Model Code*
NCGB-LCN-IBZ

*Add modifier /S to order Ductile Iron for pressure rating over 3000 psi.



Assembly Model Code*
NCGB-LCN-IBY

*Add modifier /S to order Ductile Iron for pressure rating over 3000 psi.



FULLY ADJUSTABLE PRESSURE COMPENSATED WITH FREE FLOW CHECK

Function
Meter-In P (High Capacity)

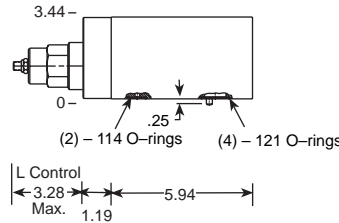
Assembly Model Code*
FDFA-LAN-IBO

*Add modifier /S to order Ductile Iron for pressure rating over 3000 psi.

Function
Meter-Out A (High Capacity)

Assembly Model Code*
FDFA-LAN-IBE

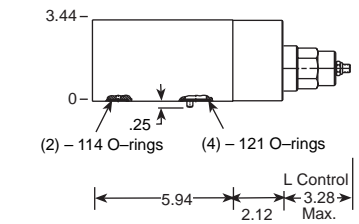
*Add modifier /S to order Ductile Iron for pressure rating over 3000 psi.



Function
Meter-Out B (High Capacity)

Assembly Model Code*
FDFA-LAN-IBF

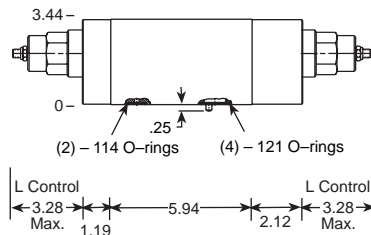
*Add modifier /S to order Ductile Iron for pressure rating over 3000 psi.



Function
Meter-In A and B (High Capacity)

Assembly Model Code*
FDFA-LAN-IBZ

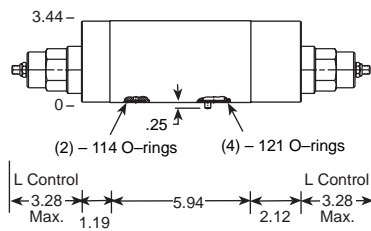
*Add modifier /S to order Ductile Iron for pressure rating over 3000 psi.



Function
Meter-Out A and B (High Capacity)

Assembly Model Code*
FDFA-LAN-IBY

*Add modifier /S to order Ductile Iron for pressure rating over 3000 psi.

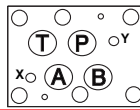


NOTES: Page 110 for cartridge model NC*B-*** and page 126 for FD*A-*** show performance curves, technical tips, and options. See page 140 for technical information about sandwich bodies including ISO interface patterns, mounting instructions, studrods, and studkits. Go to www.sunhydraulics.com for more product information. Model Codes printed in red are Preferred Products and are readily available.

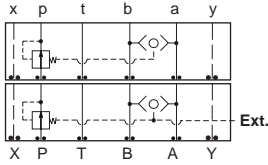
Sandwich Assemblies

**ISO 08 / CETOP 8 CIRCUIT SAVER VALVES
(PRESSURE COMPENSATOR / LOAD SENSING / REGENERATIVE)**

T-13A Cavity/T-19A Cavity

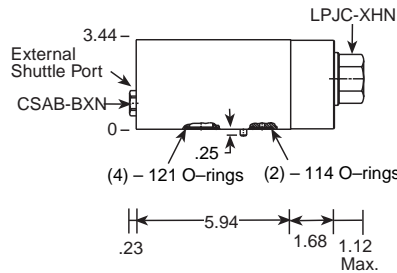


All sandwich bodies shown below are 4.50" wide



External Shuttle Port	Assembly Model Code*
None	YFIA-XHN-CA
SAE-4	YFIB-XHN-CA

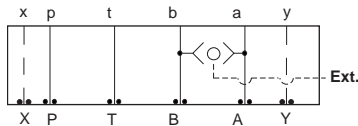
*Add modifier **/S** to order Ductile Iron for pressure rating on YFIB over 3000 psi. Add **/S** for YFIA.



Function

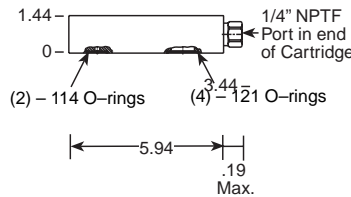
YFIA: Pressure Compensator (Restrictive)

YFIB: Pressure Compensator (Restrictive) with External Port



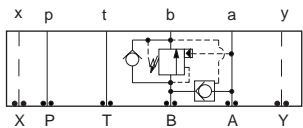
Assembly Model Code*
CSAA-BXN-IBS

*Add modifier **/S** to order Ductile Iron for pressure rating over 3000 psi.



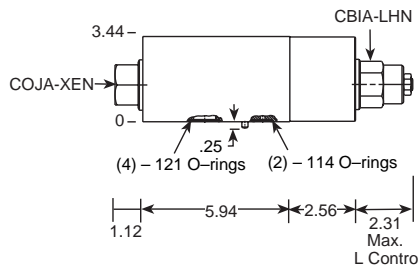
Function

Shuttle A and B (Output External)



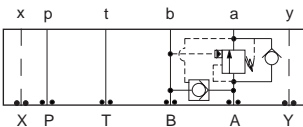
Assembly Model Code*
YDGF-LHN-CA

*Add modifier **/S** to order Ductile Iron for pressure rating over 3000 psi.



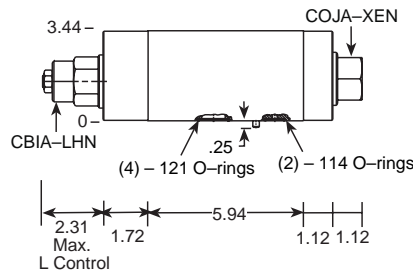
Function

B to A Regenerative (High Capacity)



Assembly Model Code*
YDGE-LHN-CA

*Add modifier **/S** to order Ductile Iron for pressure rating over 3000 psi.



Function

A to B Regenerative (High Capacity)

NOTES: Page 50 for cartridge model CB*A-*** shows performance curves, technical tips, and options. See page 140 for technical information about sandwich bodies including ISO interface patterns, mounting instructions, studrods, and studkits. Go to www.sunhydraulics.com for more product information.