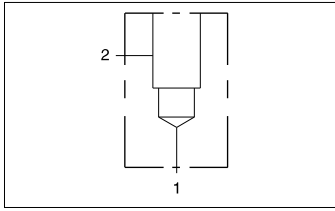




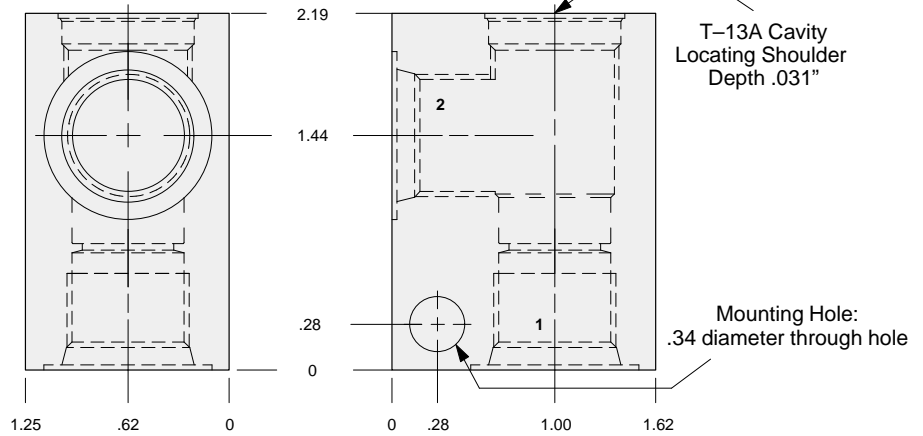
# LINE MOUNT BODIES



- Aluminum rated to 3000 psi.
- Ductile Iron rated to 5000 psi.



## 90 degree body.



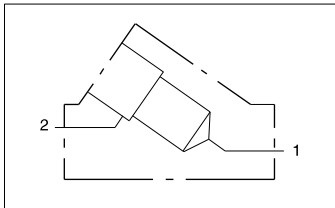
### TYPICAL CARTRIDGES USED WITH THIS BODY

CXDA - ***	Page 5.08
CXCD - ***	Page 5.10
NFCC - ***	Page 5.12
CNCC - ***	Page 5.14
NCCB - ***	Page 5.16
NCCC - ***	Page 5.18
FXCA - ***	Page 5.20
FCCB - ***	Page 5.22
FDBA - ***	Page 5.24
CSAA - ***	Page 10.09
CSAC - ***	Page 10.09
CDAA - ***	Page 10.11
CDAC - ***	Page 10.11
FQCA - ***	Page 10.14

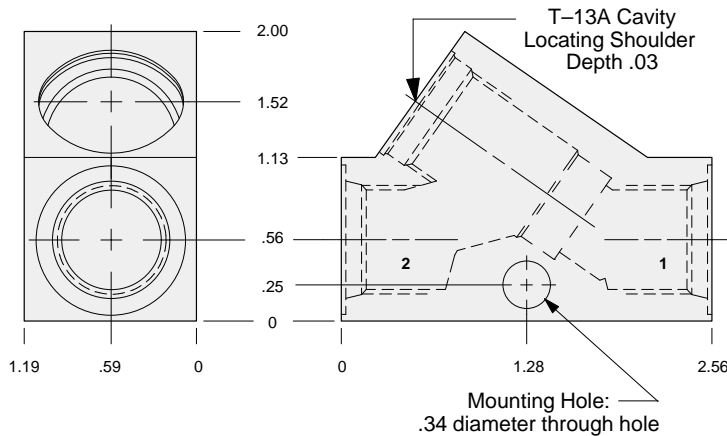
Instructions for ordering complete cartridge and body assemblies. Page v

Pressure ratings, material specifications. Page 11.02

Ports 1 & 2	ALUMINUM		DUCTILE IRON	
	Part Number		Part Number	
.25 NPTF	<b>GAA</b>		<b>GAA/S</b>	
.375 NPTF	<b>GAB</b>		<b>GAB/S</b>	
SAE-4	<b>GAH</b>		<b>GAH/S</b>	
SAE-6	<b>GAI</b>		<b>GAI/S</b>	
SAE-8	<b>GAJ</b>		<b>GAJ/S</b>	
.25 BSPP	<b>GAT</b>		<b>GAT/S</b>	
.375 BSPP	<b>GAU</b>		<b>GAU/S</b>	



## Inline body.



### TYPICAL CARTRIDGES USED WITH THIS BODY

CXDA - ***	Page 5.08
CXCD - ***	Page 5.10
NFCC - ***	Page 5.12
CNCC - ***	Page 5.14
NCCB - ***	Page 5.16
NCCC - ***	Page 5.18
FXCA - ***	Page 5.20
FCCB - ***	Page 5.22
FDBA - ***	Page 5.24
CSAA - ***	Page 10.08
CSAC - ***	Page 10.09
CDAA - ***	Page 10.11
CDAC - ***	Page 10.11
FQCA - ***	Page 10.14

Instructions for ordering complete cartridge and body assemblies. Page v

Pressure ratings, material specifications. Page 11.02

Ports 1 & 2	ALUMINUM		DUCTILE IRON	
	Part Number		Part Number	
.25 NPTF	<b>GCA</b>		<b>GCA/S</b>	
.375 NPTF	<b>GCB</b>		<b>GCB/S</b>	
SAE-4	<b>GCH</b>		<b>GCH/S</b>	
SAE-6	<b>GCI</b>		<b>GCI/S</b>	
SAE-8	<b>GCJ</b>		<b>GCJ/S</b>	
.25 BSPP	<b>GCT</b>		<b>GCT/S</b>	
.375 BSPP	<b>GCU</b>		<b>GCU/S</b>	

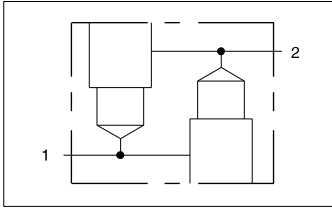
S1  
T13A



# LINE MOUNT BODIES



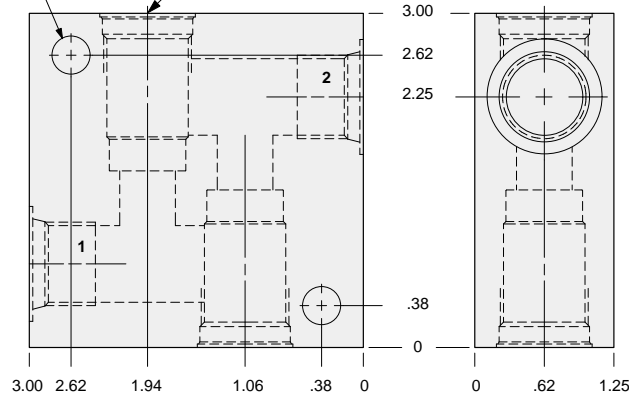
- Aluminum rated to 3000 psi.
- Ductile Iron rated to 5000 psi.



## Two cavity inline body.

Mounting Holes:  
.34 diameter through hole  
2 places.

T-13A Cavity  
Locating Shoulder  
Depth .03  
2 places.



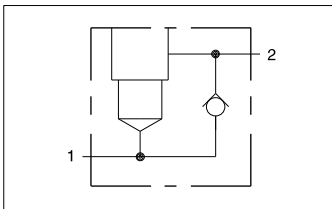
### TYPICAL CARTRIDGES USED WITH THIS BODY

CXDA - \*\*\* Page 5.08  
NFCC - \*\*\* Page 5.12  
FXCA - \*\*\* Page 5.20

Instructions for ordering complete cartridge and body assemblies. Page v

Pressure ratings, material specifications. Page 11.02

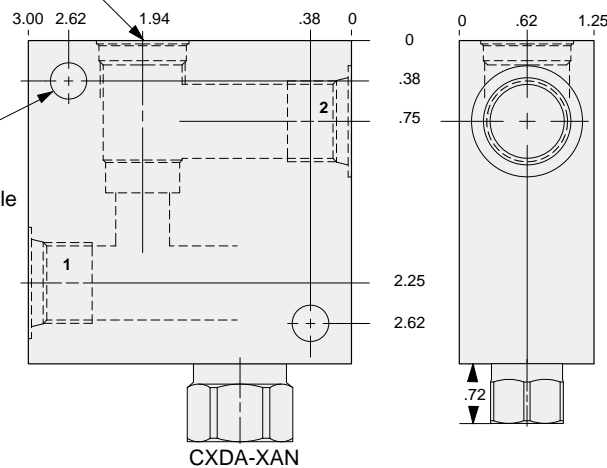
Ports 1 & 2	ALUMINUM		DUCTILE IRON	
	Part Number	List Price	Part Number	List Price
.25 NPTF	XWL		XWL/S	
.375 NPTF	XWM		XWM/S	
SAE-6	XWN		XWN/S	
SAE-8	XWP		XWP/S	
.25 BSPP	XWQ		XWQ/S	
.375 BSPP	XWR		XWR/S	



## Inline body with reverse free flow check.

T-13A Cavity  
Locating Shoulder  
Depth .03

Mounting Holes:  
.34 diameter through hole  
2 places.



### TYPICAL CARTRIDGES USED WITH THIS BODY

NFCC - \*\*\* Page 5.12  
FXCA - \*\*\* Page 5.20

Cartridge seal type determines check valve seal type.

Instructions for ordering complete cartridge and body assemblies. Page v

Pressure ratings, material specifications. Page 11.02

Ports 1 & 2	ALUMINUM		DUCTILE IRON	
	Part Number	List Price	Part Number	List Price
.25 NPTF	GNL		GNL/S	
.375 NPTF	GNM		GNM/S	
SAE-6	GNN		GNN/S	
SAE-8	GNP		GNP/S	
.25 BSPP	GNQ		GNQ/S	
.375 BSPP	GNR		GNR/S	

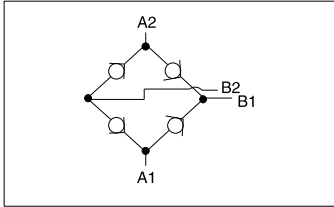
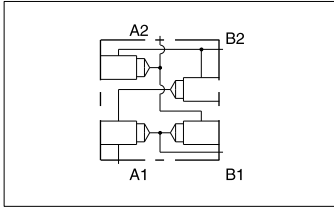
S1  
T13A



# LINE MOUNT BODIES



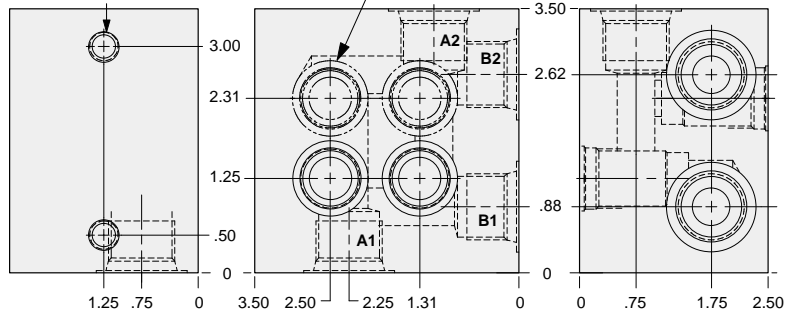
- Aluminum rated to 3000 psi.
- Ductile Iron rated to 5000 psi.



## Rectifier body.

Mounting Holes:  
 Inch: .375-16 UNC-2B x .62 deep.  
 Metric: M10 x 1.50-6H x .62 deep.  
 2 places.

T-13A Cavity  
 Locating Shoulder  
 Depth .03  
 4 places.



### TYPICAL CARTRIDGES USED WITH THIS BODY

CXDA - \*\*\* Page 5.08

Instructions for ordering complete cartridge and body assemblies. Page v

Pressure ratings, material specifications. Page 11.02

Mounting Hole Dimensions	Ports 1 & 2	ALUMINUM		DUCTILE IRON	
		Part Number	List Price	Part Number	List Price
Inch	.25 NPTF	YSR		YSR/S	
Inch	.375 NPTF	YSS		YSS/S	
Inch	.50 NPTF	YST		YST/S	
Inch	SAE-6	YSU		YSU/S	
Inch	SAE-8	YSV		YSV/S	
Inch	SAE-10	YSW		YSW/S	
Metric	.25 BSPP	YSX		YSX/S	
Metric	.375 BSPP	YSY		YSY/S	
Metric	.50 BSPP	YSZ		YSZ/S	

S1  
T13A