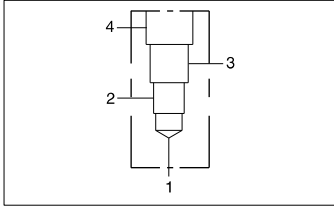




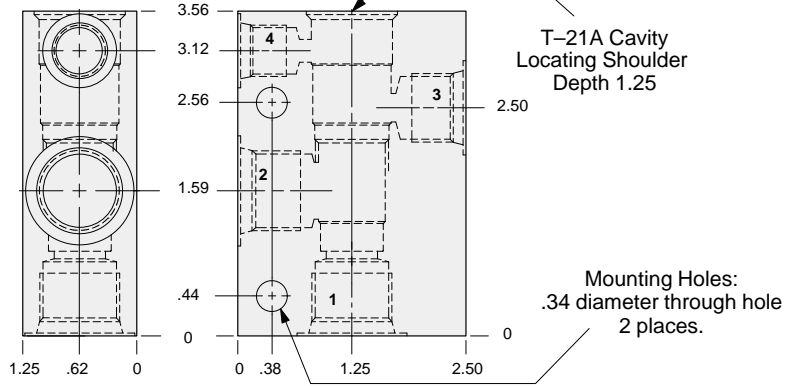
# LINE MOUNT BODIES



- Aluminum rated to 3000 psi.
- Ductile Iron rated to 5000 psi.



## 90 degree body.



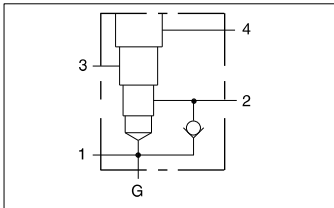
### TYPICAL CARTRIDGES USED WITH THIS BODY

RVCD - ***	Page 1.20
PVDA - ***	Page 3.14
PVDB - ***	Page 3.16
CWCA - ***	Page 4.18
CWCG - ***	Page 4.20
CVCV - ***	Page 4.22
FVCA - ***	Page 6.04
DPBM - ***	Page 8.10
DPBN - ***	Page 8.11
DPBO - ***	Page 8.12
DPBP - ***	Page 8.13

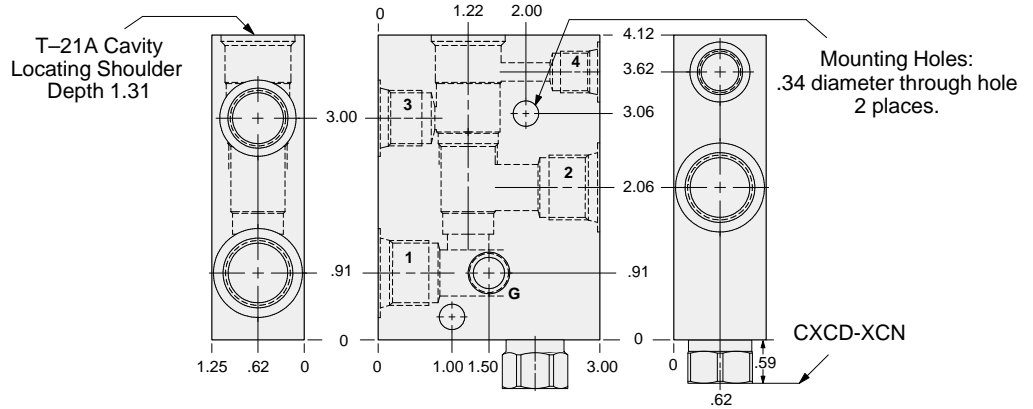
Instructions for ordering complete cartridge and body assemblies. Page v

Pressure ratings, material specifications. Page 11.02

Ports 1 & 2	Port 3	Port 4	ALUMINUM		DUCTILE IRON	
			Part Number	List Price	Part Number	List Price
.25 NPTF	.25 NPTF	.25 NPTF	MAA		MAA/S	
.375 NPTF	.375 NPTF	.25 NPTF	MAB		MAB/S	
.50 NPTF	.375 NPTF	.25 NPTF	MAC		MAC/S	
SAE-6	SAE-6	SAE-6	MAI		MAI/S	
SAE-8	SAE-8	SAE-6	MAJ		MAJ/S	
SAE-10	SAE-8	SAE-6	MAK		MAK/S	
.25 BSPP	.25 BSPP	.25 BSPP	MAT		MAT/S	
.375 BSPP	.375 BSPP	.25 BSPP	MAU		MAU/S	
.50 BSPP	.375 BSPP	.25 BSPP	MAV		MAV/S	



## Body with reverse free flow check and gage port for reducing/relieving applications.



### TYPICAL CARTRIDGES USED WITH THIS BODY

PVDA - ***	Page 3.14
PVDB - ***	Page 3.16

Cartridge seal type determines check valve seal type.

Instructions for ordering complete cartridge and body assemblies. Page v

Pressure ratings, material specifications. Page 11.02

Ports 1 & 2	Port 3	Port 4	Gage Port	ALUMINUM		DUCTILE IRON	
				Part Number	List Price	Part Number	List Price
.25 NPTF	.25 NPTF	.25 NPTF	.25 NPTF	M4A		M4A/S	
.375 NPTF	.375 NPTF	.375 NPTF	.25 NPTF	M4B		M4B/S	
.50 NPTF	.50 NPTF	.50 NPTF	.25 NPTF	M4C		M4C/S	
SAE-6	SAE-6	SAE-6	.25 NPTF	M4I		M4I/S	
SAE-8	SAE-8	SAE-6	.25 NPTF	M4J		M4J/S	
SAE-10	SAE-8	SAE-6	.25 NPTF	M4K		M4K/S	
.25 BSPP	.25 BSPP	.25 BSPP	.25 BSPP	M4T		M4T/S	
.375 BSPP	.375 BSPP	.25 BSPP	.25 BSPP	M4U		M4U/S	
.50 BSPP	.375 BSPP	.25 BSPP	.25 BSPP	M4V		M4V/S	

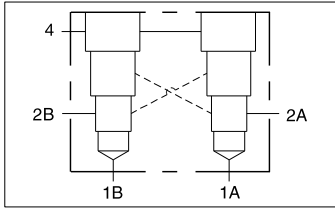
S1  
T21A



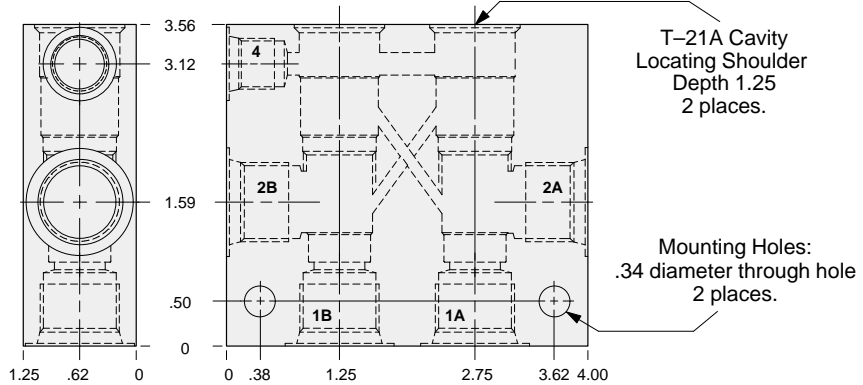
# LINE MOUNT BODIES



- Aluminum rated to 3000 psi.
- Ductile Iron rated to 5000 psi.



**Two cavity 90 degree cross-piloted body with common port 4 for load control applications.**



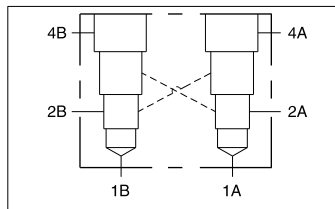
**TYPICAL CARTRIDGES USED WITH THIS BODY**

- CWCA - \*\*\* Page 4.18  
 CWCG - \*\*\* Page 4.20  
 CVCV - \*\*\* Page 4.22

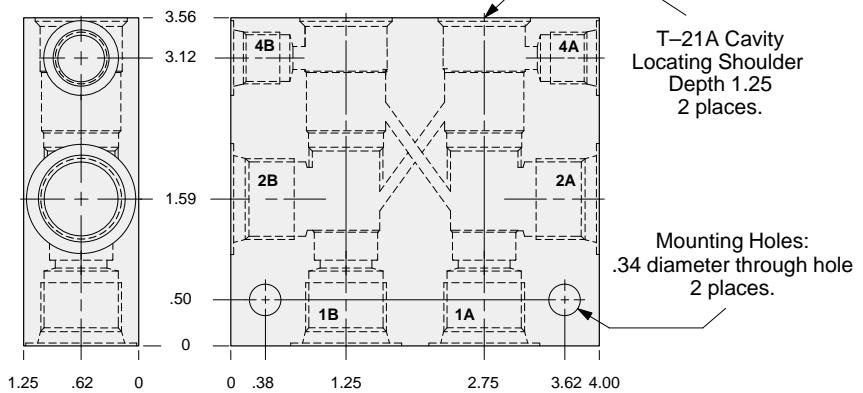
Instructions for ordering complete cartridge and body assemblies. Page v

Pressure ratings, material specifications. Page 11.02

Main Ports 1A,1B 2A,2B	Port 4	ALUMINUM		DUCTILE IRON	
		Part Number	List Price	Part Number	List Price
.25 NPTF	.25 NPTF	XPA		XPA/S	
.375 NPTF	.25 NPTF	XPB		XPB/S	
.50 NPTF	.25 NPTF	XPC		XPC/S	
SAE-6	SAE-6	XPI		XPI/S	
SAE-8	SAE-6	XPJ		XPJ/S	
SAE-10	SAE-6	XPK		XPK/S	
.25 BSPP	.25 BSPP	XPT		XPT/S	
.375 BSPP	.25 BSPP	XPU		XPU/S	
.50 BSPP	.25 BSPP	XPV		XPV/S	



**Two cavity 90 degree cross-piloted body with independent port 4 for load control applications.**



**TYPICAL CARTRIDGES USED WITH THIS BODY**

- CWCA - \*\*\* Page 4.18  
 CWCG - \*\*\* Page 4.20  
 CVCV - \*\*\* Page 4.22

Instructions for ordering complete cartridge and body assemblies. Page v

Pressure ratings, material specifications. Page 11.02

Main Ports 1A,1B 2A,2B	Ports 4A & 4B	ALUMINUM		DUCTILE IRON	
		Part Number	List Price	Part Number	List Price
.25 NPTF	.25 NPTF	XFA		XFA/S	
.375 NPTF	.25 NPTF	XFB		XFB/S	
.50 NPTF	.25 NPTF	XFC		XFC/S	
SAE-6	SAE-6	XFI		XFI/S	
SAE-8	SAE-6	XFJ		XFJ/S	
SAE-10	SAE-6	XFK		XFK/S	
.25 BSPP	.25 BSPP	XFT		XFT/S	
.375 BSPP	.25 BSPP	XFU		XFU/S	
.50 BSPP	.25 BSPP	XFV		XFV/S	

S1  
T21A