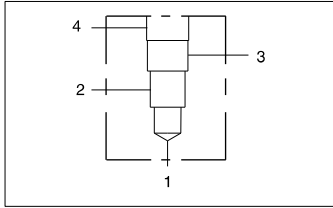




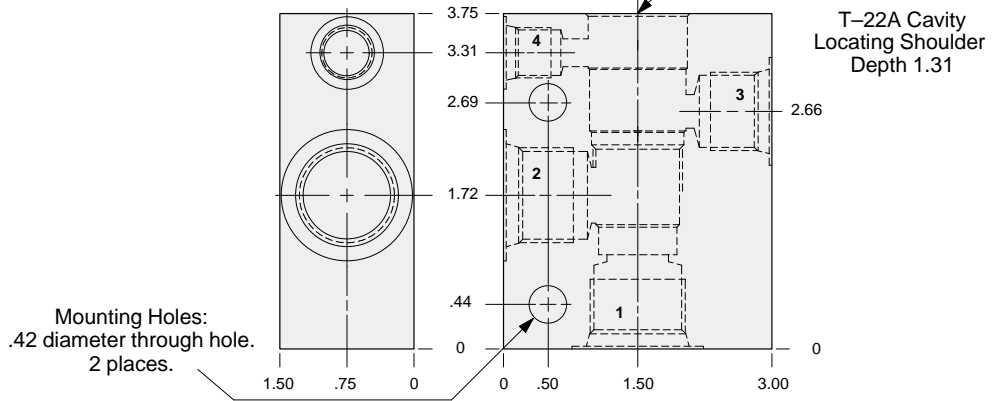
# LINE MOUNT BODIES



- Aluminum rated to 3000 psi.
- Ductile Iron rated to 5000 psi.



## 90 degree body.



S2  
T22A

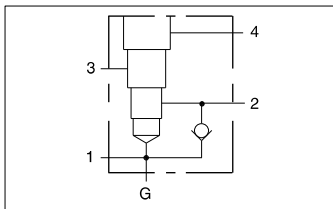
### TYPICAL CARTRIDGES USED WITH THIS BODY

|            |           |
|------------|-----------|
| RVED - *** | Page 1.20 |
| PVFA - *** | Page 3.14 |
| PVFB - *** | Page 3.16 |
| CWEA - *** | Page 4.18 |
| CWEG - *** | Page 4.20 |
| CVEV - *** | Page 4.22 |
| FVDA - *** | Page 6.04 |
| DPCM - *** | Page 8.10 |
| DPCN - *** | Page 8.11 |
| DPCO - *** | Page 8.12 |
| DPCP - *** | Page 8.13 |

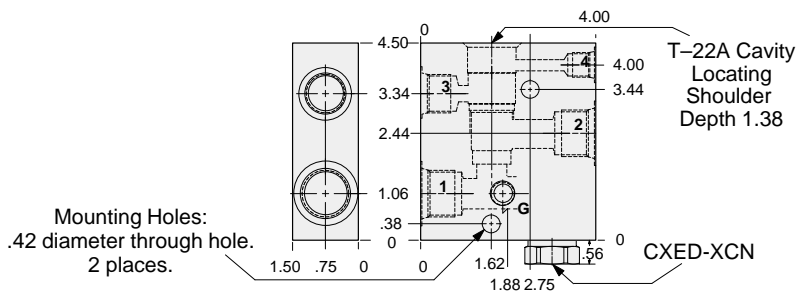
Instructions for ordering complete cartridge and body assemblies. Page v

Pressure ratings, material specifications. Page 11.02

| Ports 1 & 2 | Port 3    | Port 4   | ALUMINUM    |            | DUCTILE IRON |            |
|-------------|-----------|----------|-------------|------------|--------------|------------|
|             |           |          | Part Number | List Price | Part Number  | List Price |
| .375 NPTF   | .375 NPTF | .25 NPTF | NAB         |            | NAB/S        |            |
| .50 NPTF    | .50 NPTF  | .25 NPTF | NAC         |            | NAC/S        |            |
| .75 NPTF    | .50 NPTF  | .25 NPTF | NAD         |            | NAD/S        |            |
| SAE-8       | SAE-8     | SAE-6    | NAJ         |            | NAJ/S        |            |
| SAE-10      | SAE-10    | SAE-6    | NAK         |            | NAK/S        |            |
| SAE-12      | SAE-10    | SAE-6    | NAL         |            | NAL/S        |            |
| .375 BSPP   | .375 BSPP | .25 BSPP | NAU         |            | NAU/S        |            |
| .50 BSPP    | .50 BSPP  | .25 BSPP | NAV         |            | NAV/S        |            |
| .75 BSPP    | .50 BSPP  | .25 BSPP | NAW         |            | NAW/S        |            |



## Body with reverse free flow check and gage port.



### TYPICAL CARTRIDGES USED WITH THIS BODY

|            |           |
|------------|-----------|
| PVFA - *** | Page 3.14 |
| PVFB - *** | Page 3.16 |

Cartridge seal type determines check valve seal type.

Instructions for ordering complete cartridge and body assemblies. Page v

Pressure ratings, material specifications. Page 11.02

| Ports 1 & 2 | Port 3    | Port 4   | Gage Port | ALUMINUM    |            | DUCTILE IRON |            |
|-------------|-----------|----------|-----------|-------------|------------|--------------|------------|
|             |           |          |           | Part Number | List Price | Part Number  | List Price |
| .25 NPTF    | .25 NPTF  | .25 NPTF | .25 NPTF  | N4A         |            | N4A/S        |            |
| .375 NPTF   | .375 NPTF | .25 NPTF | .25 NPTF  | N4B         |            | N4B/S        |            |
| .50 NPTF    | .50 NPTF  | .25 NPTF | .25 NPTF  | N4C         |            | N4C/S        |            |
| .75 NPTF    | .50 NPTF  | .25 NPTF | .25 NPTF  | N4D         |            | N4D/S        |            |
| SAE-6       | SAE-6     | SAE-6    | .25 NPTF  | N4I         |            | N4I/S        |            |
| SAE-8       | SAE-8     | SAE-6    | .25 NPTF  | N4J         |            | N4J/S        |            |
| SAE-10      | SAE-10    | SAE-6    | .25 NPTF  | N4K         |            | N4K/S        |            |
| SAE-12      | SAE-10    | SAE-6    | .25 NPTF  | N4L         |            | N4L/S        |            |
| .25 BSPP    | .25 BSPP  | .25 BSPP | .25 BSPP  | N4T         |            | N4T/S        |            |
| .375 BSPP   | .375 BSPP | .25 BSPP | .25 BSPP  | N4U         |            | N4U/S        |            |
| .50 BSPP    | .50 BSPP  | .25 BSPP | .25 BSPP  | N4V         |            | N4V/S        |            |
| .75 BSPP    | .50 BSPP  | .25 BSPP | .25 BSPP  | N4W         |            | N4W/S        |            |

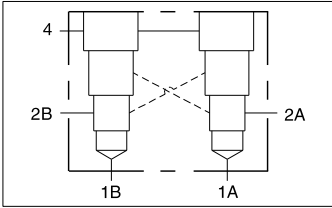


# LINE MOUNT BODIES

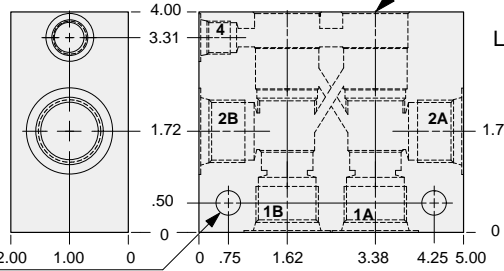


- Aluminum rated to 3000 psi.
- Ductile Iron rated to 5000 psi.

S2  
T22A



**Two cavity 90 degree cross-piloted body with common port 4 for load control applications.**



Mounting Holes:  
.42 diameter through hole.  
2 places.

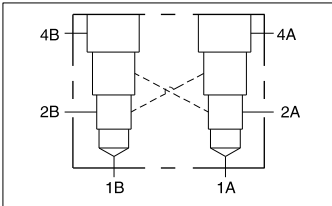
**TYPICAL CARTRIDGES  
USED WITH THIS BODY**

- CWEA - \*\*\* Page 4.18  
CWEG - \*\*\* Page 4.20  
CVEV - \*\*\* Page 4.22

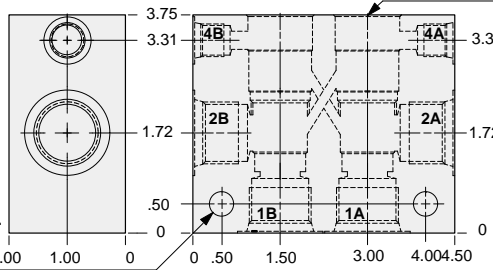
Instructions for ordering complete cartridge and body assemblies. Page v

Pressure ratings, material specifications. Page 11.02

| Ports<br>1A, 1B<br>2A & 2B | Port 4   | ALUMINUM    |            | DUCTILE IRON |            |
|----------------------------|----------|-------------|------------|--------------|------------|
|                            |          | Part Number | List Price | Part Number  | List Price |
| .25 NPTF                   | .25 NPTF | XIA         |            | XIA/S        |            |
| .375 NPTF                  | .25 NPTF | XIB         |            | XIB/S        |            |
| .50 NPTF                   | .25 NPTF | XIC         |            | XIC/S        |            |
| .75 NPTF                   | .25 NPTF | XID         |            | XID/S        |            |
| SAE-6                      | SAE-6    | XII         |            | XII/S        |            |
| SAE-8                      | SAE-6    | XIJ         |            | XIJ/S        |            |
| SAE-10                     | SAE-6    | XIK         |            | XIK/S        |            |
| SAE-12                     | SAE-6    | XIL         |            | XIL/S        |            |
| .25 BSPP                   | .25 BSPP | XIT         |            | XIT/S        |            |
| .375 BSPP                  | .25 BSPP | XIU         |            | XIU/S        |            |
| .50 BSPP                   | .25 BSPP | XIV         |            | XIV/S        |            |
| .75 BSPP                   | .25 BSPP | XIW         |            | XIW/S        |            |



**Two cavity 90 degree cross-piloted body with independent port 4 for load control applications.**



Mounting Holes:  
.42 diameter through hole.  
2 places.

**TYPICAL CARTRIDGES  
USED WITH THIS BODY**

- CWEA - \*\*\* Page 4.18  
CWEG - \*\*\* Page 4.20  
CVEV - \*\*\* Page 4.22

Instructions for ordering complete cartridge and body assemblies. Page v

Pressure ratings, material specifications. Page 11.02

| Ports<br>1A, 1B<br>2A & 2B | PortS<br>4A & 4B | ALUMINUM    |            | DUCTILE IRON |            |
|----------------------------|------------------|-------------|------------|--------------|------------|
|                            |                  | Part Number | List Price | Part Number  | List Price |
| .25 NPTF                   | .25 NPTF         | XRA         |            | XRA/S        |            |
| .375 NPTF                  | .25 NPTF         | XRJ         |            | XRJ/S        |            |
| .50 NPTF                   | .25 NPTF         | XRC         |            | XRC/S        |            |
| .75 NPTF                   | .25 NPTF         | XRD         |            | XRD/S        |            |
| SAE-6                      | SAE-6            | XRI         |            | XRI/S        |            |
| SAE-8                      | SAE-6            | XRJ         |            | XRJ/S        |            |
| SAE-10                     | SAE-6            | XRK         |            | XRK/S        |            |
| SAE-12                     | SAE-6            | XRL         |            | XRL/S        |            |
| .25 BSPP                   | .25 BSPP         | XRT         |            | XRT/S        |            |
| .375 BSPP                  | .25 BSPP         | XRU         |            | XRU/S        |            |
| .50 BSPP                   | .25 BSPP         | XRV         |            | XRV/S        |            |
| .75 BSPP                   | .25 BSPP         | XRW         |            | XRW/S        |            |



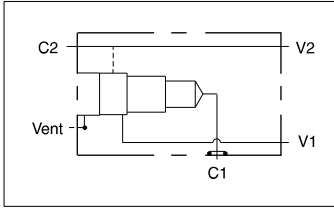
# LINE MOUNT BODIES

- Aluminum rated to 3000 psi.
- Ductile Iron rated to 5000 psi.



S2  
T22A

## Gasket mount body for load control applications.



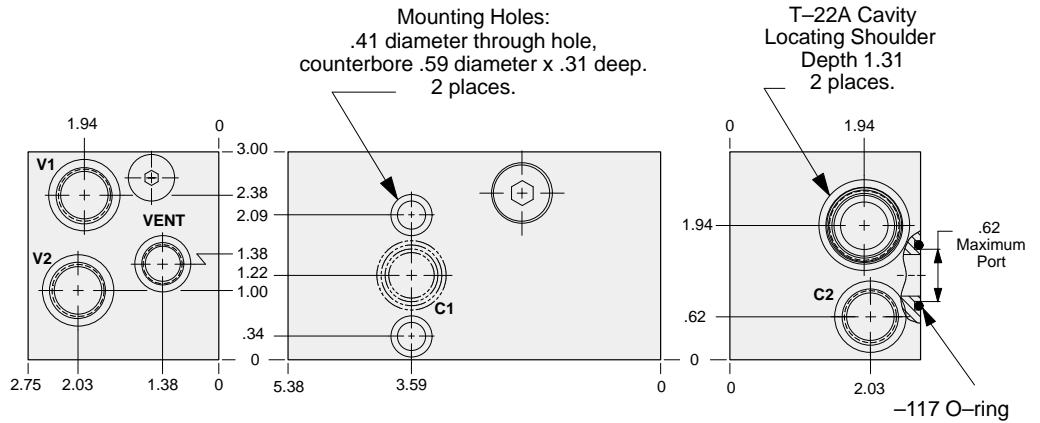
### TYPICAL CARTRIDGES USED WITH THIS BODY

CWEA - \*\*\* Page 4.18  
 CWEG - \*\*\* Page 4.20  
 CVEV - \*\*\* Page 4.22

Cartridge seal type determines O-ring type.

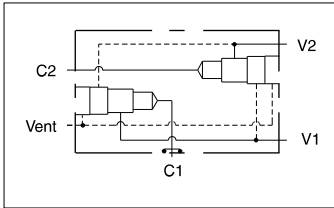
Instructions for ordering complete cartridge and body assemblies. Page v

Pressure ratings, material specifications. Page 11.02



| Ports<br>C2, V1, & V2 | Vent<br>Port | ALUMINUM       |               | DUCTILE IRON   |               |
|-----------------------|--------------|----------------|---------------|----------------|---------------|
|                       |              | Part<br>Number | List<br>Price | Part<br>Number | List<br>Price |
| .50 NPTF              | .25 NPTF     | <b>WJB</b>     |               | <b>WJB/S</b>   |               |
| SAE-8                 | SAE-6        | <b>WJC</b>     |               | <b>WJC/S</b>   |               |
| .50 BSPP              | .25 BSPP     | <b>WJD</b>     |               | <b>WJD/S</b>   |               |

## Two cavity gasket mount dual load control body.



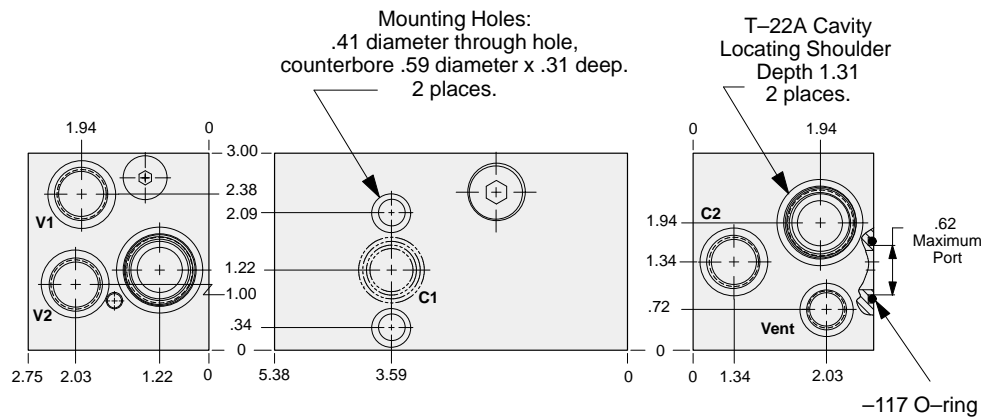
### TYPICAL CARTRIDGES USED WITH THIS BODY

CWEA - \*\*\* Page 4.18  
 CWEG - \*\*\* Page 4.20  
 CVEV - \*\*\* Page 4.22

Cartridge seal type determines O-ring type.

Instructions for ordering complete cartridge and body assemblies. Page v

Pressure ratings, material specifications. Page 11.02



| Ports<br>C2, V1, & V2 | Vent<br>Port | ALUMINUM       |               | DUCTILE IRON   |               |
|-----------------------|--------------|----------------|---------------|----------------|---------------|
|                       |              | Part<br>Number | List<br>Price | Part<br>Number | List<br>Price |
| .50 NPTF              | .25 NPTF     | <b>VZN</b>     |               | <b>VZN/S</b>   |               |
| SAE-8                 | SAE-6        | <b>VZO</b>     |               | <b>VZO/S</b>   |               |
| .50 BSPP              | .25 BSPP     | <b>VZP</b>     |               | <b>VZP/S</b>   |               |