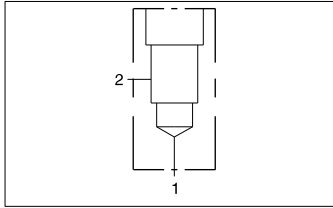




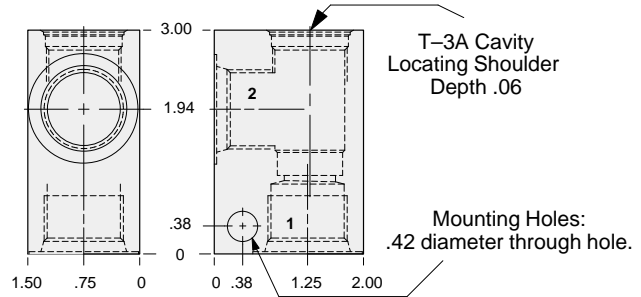
LINE MOUNT BODIES



- Aluminum rated to 3000 psi.
- Ductile Iron rated to 5000 psi.



90 degree body.



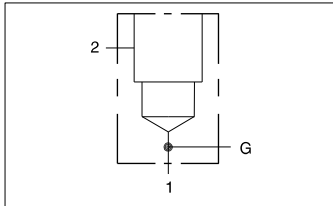
TYPICAL CARTRIDGES USED WITH THIS BODY

RPGC - ***	Page 1.06
RPGE - ***	Page 1.08
RDFA - ***	Page 1.10
RQGB - ***	Page 1.12
RPGD - ***	Page 1.14
RBAA - ***	Page 1.16
RBAB - ***	Page 1.14
NQEB - ***	Page 10.16

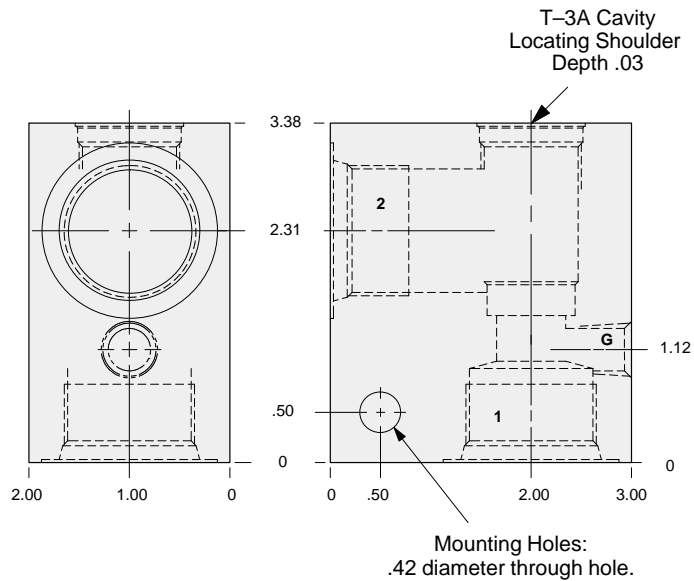
Instructions for ordering complete cartridge and body assemblies. Page v

Pressure ratings, material specifications. Page 11.02

Ports 1 & 2	ALUMINUM		DUCTILE IRON	
	Part Number	List Price	Part Number	List Price
.25 NPTF	CAA		CAA/S	
.375 NPTF	CAB		CAB/S	
.50 NPTF	CAC		CAC/S	
.75 NPTF	CAD		CAD/S	
SAE-4	CAH		CAH/S	
SAE-6	CAI		CAI/S	
SAE-8	CAJ		CAJ/S	
SAE-10	CAK		CAK/S	
SAE-12	CAL		CAL/S	
.25 BSPP	CAT		CAT/S	
.375 BSPP	CAU		CAU/S	
.50 BSPP	CAV		CAV/S	
.75 BSPP	CAW		CAW/S	



90 degree body with gage port.



TYPICAL CARTRIDGES USED WITH THIS BODY

RPGC - ***	Page 1.06
RPGE - ***	Page 1.08
RDFA - ***	Page 1.10
RQGB - ***	Page 1.12
RPGD - ***	Page 1.14
NQEB - ***	Page 10.16

Instructions for ordering complete cartridge and body assemblies. Page v

Pressure ratings, material specifications. Page 11.02

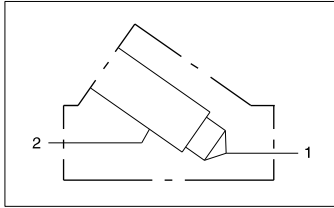
Ports 1 & 2	Gage Port	ALUMINUM		DUCTILE IRON	
		Part Number	List Price	Part Number	List Price
1.00 NPTF	.25 NPTF	CAE		CAE/S	
SAE-16	.25 NPTF	CAM		CAM/S	
1.00 BSPP	.25 BSPP	CAX		CAX/S	



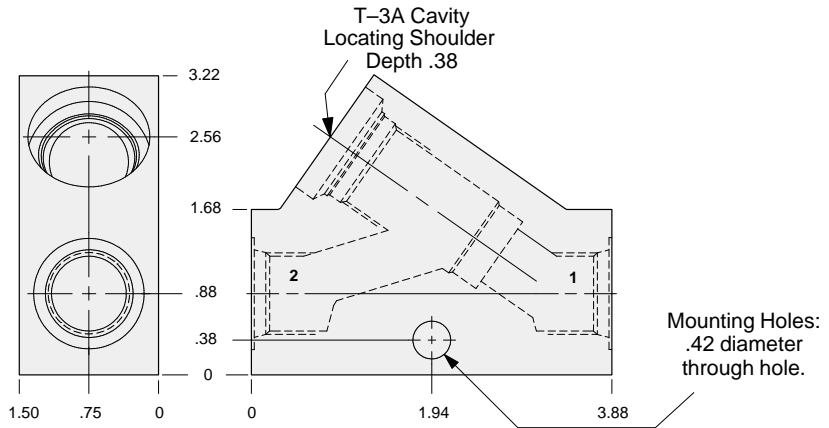
LINE MOUNT BODIES



- Aluminum rated to 3000 psi.
- Ductile Iron rated to 5000 psi.



Inline body.



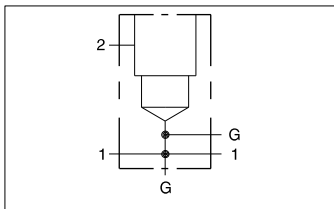
TYPICAL CARTRIDGES USED WITH THIS BODY

RPGC - ***	Page 1.06
RPGE - ***	Page 1.08
RDFA - ***	Page 1.10
RQGB - ***	Page 1.12
RPGD - ***	Page 1.14
RBAA - ***	Page 1.14
RBAB - ***	Page 1.16
NQEB - ***	Page 10.16

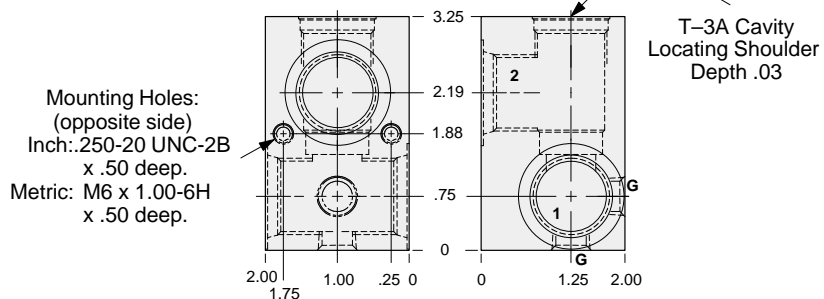
Instructions for ordering complete cartridge and body assemblies. Page v

Pressure ratings, material specifications. Page 11.02

Ports 1 & 2	ALUMINUM		DUCTILE IRON	
	Part Number	List Price	Part Number	List Price
.375 NPTF	CGB		CGB/S	
.50 NPTF	CGC		CGC/S	
.75 NPTF	CGD		CGD/S	
SAE-6	CGI		CGI/S	
SAE-8	CGJ		CGJ/S	
SAE-10	CGK		CGK/S	
.375 BSPP	CGU		CGU/S	
.50 BSPP	CGV		CGV/S	
.75 BSPP	CGW		CGW/S	



Through port body with gage ports.



TYPICAL CARTRIDGES USED WITH THIS BODY

RPGC - ***	Page 1.06
RPGE - ***	Page 1.08
RDFA - ***	Page 1.10
RQGB - ***	Page 1.12
RPGD - ***	Page 1.14
RBAA - ***	Page 1.14
RBAB - ***	Page 1.16
NQEB - ***	Page 10.16

Instructions for ordering complete cartridge and body assemblies. Page v

Pressure ratings, material specifications. Page 11.02

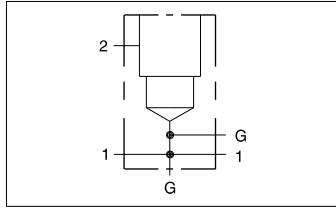
Mounting Hole Dimensions	Ports 1 & 2	Gage Ports	ALUMINUM		DUCTILE IRON	
			Part Number	List Price	Part Number	List Price
Inch	.25 NPTF	.25 NPTF	CEA		CEA/S	
Inch	.375 NPTF	.25 NPTF	CEB		CEB/S	
Inch	.50 NPTF	.25 NPTF	CEC		CEC/S	
Inch	.75 NPTF	.25 NPTF	CED		CED/S	
Inch	SAE-4	.25 NPTF	CEH		CEH/S	
Inch	SAE-6	.25 NPTF	CEI		CEI/S	
Inch	SAE-8	.25 NPTF	CEJ		CEJ/S	
Inch	SAE-10	.25 NPTF	CEK		CEK/S	
Inch	SAE-12	.25 NPTF	CEL		CEL/S	
Metric	.25 BSPP	.25 BSPP	CET		CET/S	
Metric	.375 BSPP	.25 BSPP	CEU		CEU/S	
Metric	.50 BSPP	.25 BSPP	CEV		CEV/S	
Metric	.75 BSPP	.25 BSPP	CEW		CEW/S	



LINE MOUNT BODIES



- Aluminum rated to 3000 psi.
- Ductile Iron rated to 5000 psi.



Through port body with gage ports.

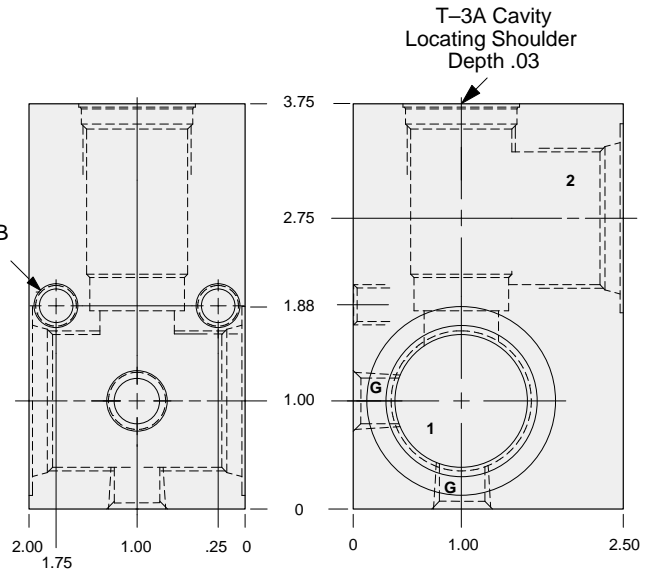
TYPICAL CARTRIDGES USED WITH THIS BODY

RPGC - ***	Page 1.06
RPGE - ***	Page 1.08
RDFA - ***	Page 1.10
RQGB - ***	Page 1.12
RPGD - ***	Page 1.14
NQEB - ***	Page 10.16

Instructions for ordering complete cartridge and body assemblies. Page v

Pressure ratings, material specifications. Page 11.02

Mounting Holes:
Inch: .250-20 UNC-2B
x .50 deep.
Metric: M6 x 1.00-6H
x .50 deep.



Mounting Hole Dimensions	Ports 1 & 2	Gage Ports	ALUMINUM		DUCTILE IRON	
			Part Number	List Price	Part Number	List Price
Inch	1.00 NPTF	.25 NPTF	CEE		CEE/S	
Inch	SAE-16	.25 NPTF	CEM		CEM/S	
Metric	1.00 BSPP	.25 BSPP	CEX		CEX/S	

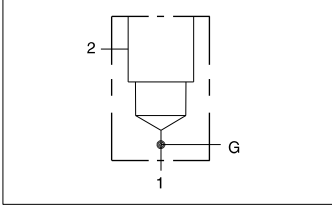


LINE MOUNT BODIES



- Aluminum rated to 3000 psi.
- Ductile Iron rated to 5000 psi.

90 degree .75" SAE Code 61 flange port body with gage port.



TYPICAL CARTRIDGES USED WITH THIS BODY

- RPGC - *** Page 1.06
- RPGE - *** Page 1.08
- RDFA - *** Page 1.10
- RQGB - *** Page 1.12
- RPGD - *** Page 1.14
- NQEB - *** Page 10.16

Instructions for ordering complete cartridge and body assemblies. Page v

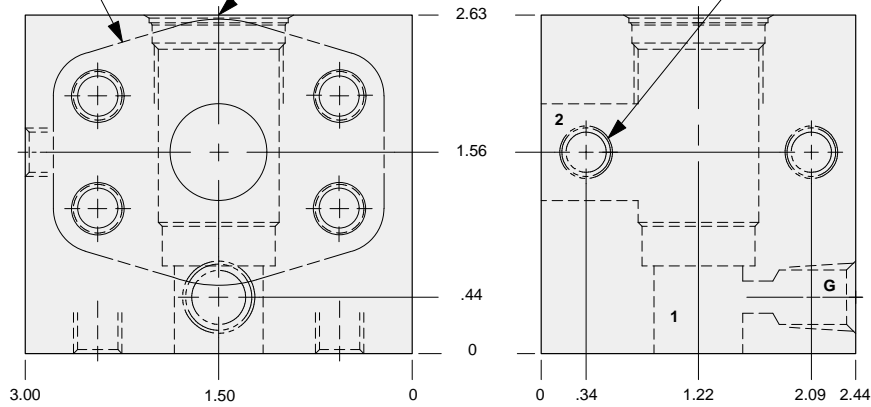
Pressure ratings, material specifications. Page 11.02

SAE Specifications Page 11.03

.75" SAE Code 61
4-Bolt Flange Pattern
2 places.

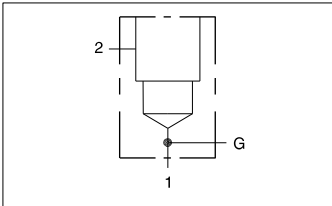
T-3A Cavity
Locating Shoulder
Depth .06

Mounting Holes:
(opposite side)
Inch: .375-16 UNC-2B x .62 deep.
Metric: M10 x 1.50-6H x .62 deep.
2 places.



Mounting Hole Dimensions	Gage Port	ALUMINUM		DUCTILE IRON	
		Part Number	List Price	Part Number	List Price
Inch	.25 NPTF	CAO		CAO/S	
Metric	.25 BSPP	CAO/M		CAO/T	

90 degree .75" SAE Code 62 flange port body with gage port.



TYPICAL CARTRIDGES USED WITH THIS BODY

- RPGC - *** Page 1.06
- RPGE - *** Page 1.08
- RDFA - *** Page 1.10
- RQGB - *** Page 1.12
- RPGD - *** Page 1.14
- NQEB - *** Page 10.16

Instructions for ordering complete cartridge and body assemblies. Page v

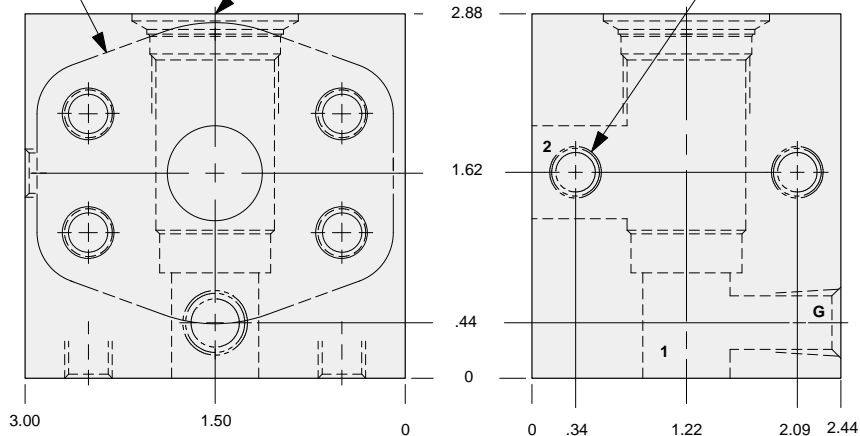
Pressure ratings, material specifications. Page 11.02

SAE Specifications Page 11.03

.75" SAE Code 62
4-Bolt Flange Pattern
2 places.

T-3A Cavity
Locating Shoulder
Depth .06

Mounting Holes:
(opposite side)
Inch: .375-16 UNC-2B x .62 deep.
Metric: M10 x 1.50-6H x .62 deep.
2 places.



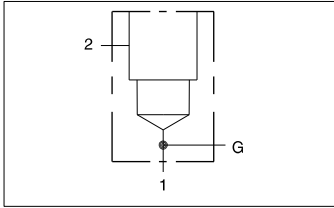
Mounting Hole Dimensions	Gage Port	ALUMINUM		DUCTILE IRON	
		Part Number	List Price	Part Number	List Price
Inch	.25 NPTF	CA3		CA3/S	
Metric	.25 BSPP	CA3/M		CA3/T	



LINE MOUNT BODIES



- Aluminum rated to 3000 psi.
- Ductile Iron rated to 5000 psi.

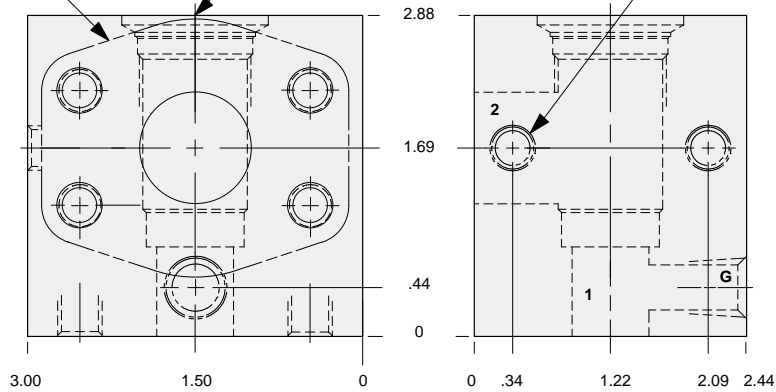


90 degree 1.00" SAE Code 61 flange port body with gage port.

1.00" SAE Code 61
4-Bolt Flange Pattern
2 places.

T-3A Cavity
Locating Shoulder
Depth .19

Mounting Holes:
(opposite side)
Inch: .375-16 UNC-2B x .62 deep.
Metric: M10 x 1.50-6H x .62 deep.
2 places.



TYPICAL CARTRIDGES USED WITH THIS BODY

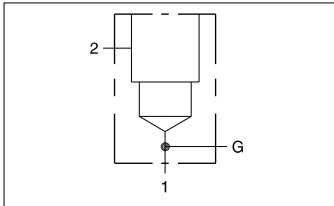
RPGC - ***	Page 1.06
RPGE - ***	Page 1.08
RDFA - ***	Page 1.10
RQGB - ***	Page 1.12
RPGD - ***	Page 1.14
NQEB - ***	Page 10.16

Instructions for ordering complete cartridge and body assemblies. Page v

Pressure ratings, material specifications. Page 11.02

SAE Specifications Page 11.03

Mounting Hole Dimensions	Gage Port	ALUMINUM		DUCTILE IRON	
		Part Number	List Price	Part Number	List Price
Inch	.25 NPTF	CAP		CAP/S	
Metric	.25 BSPP	CAP/M		CAP/T	

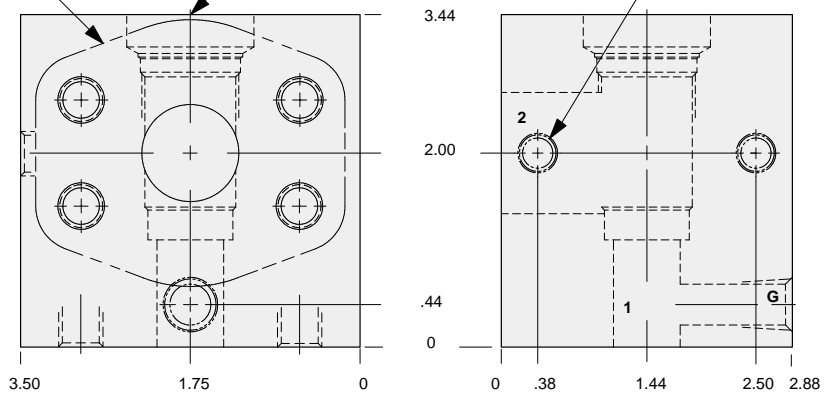


90 degree 1.00" SAE Code 62 flange port body with gage port.

1.00" SAE Code 62
4-Bolt Flange Pattern
2 places.

T-3A Cavity
Locating Shoulder
Depth .44

Mounting Holes:
(opposite side)
Inch: .375-16 UNC-2B x .62 deep.
Metric: M10 x 1.50-6H x .62 deep.
2 places.



TYPICAL CARTRIDGES USED WITH THIS BODY

RPGC - ***	Page 1.06
RPGE - ***	Page 1.08
RDFA - ***	Page 1.10
RQGB - ***	Page 1.12
RPGD - ***	Page 1.14
NQEB - ***	Page 10.16

Instructions for ordering complete cartridge and body assemblies. Page v

Pressure ratings, material specifications. Page 11.02

SAE Specifications Page 11.03

Mounting Hole Dimensions	Gage Port	ALUMINUM		DUCTILE IRON	
		Part Number	List Price	Part Number	List Price
Inch	.25 NPTF	CA4		CA4/S	
Metric	.25 BSPP	CA4/M		CA4/T	

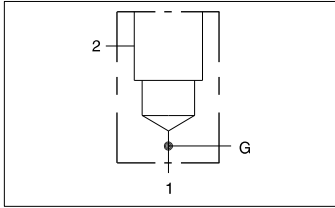


LINE MOUNT BODIES



- Aluminum rated to 3000 psi.
- Ductile Iron rated to 5000 psi.

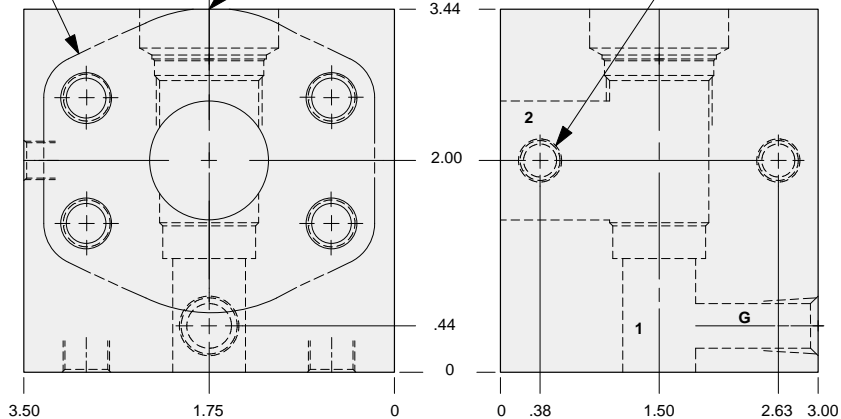
90 degree 1.25" SAE Code 61 flange port body with gage port.



1.25" SAE Code 61
4-Bolt Flange Pattern
2 places.

T-3A Cavity
Locating Shoulder
Depth .28

Mounting Holes:
(opposite side)
Inch: .375-16 UNC-2B x .62 deep.
Metric: M10 x 1.50-6H x .62 deep.
2 places.



TYPICAL CARTRIDGES USED WITH THIS BODY

RPGC - ***	Page 1.06
RPGE - ***	Page 1.08
RDFA - ***	Page 1.10
RQGB - ***	Page 1.12
RPGD - ***	Page 1.14
NQEB - ***	Page 10.16

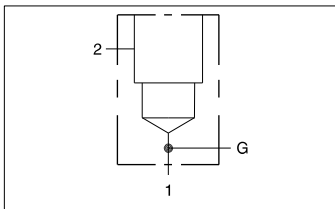
Instructions for ordering complete cartridge and body assemblies. Page v

Pressure ratings, material specifications. Page 11.02

SAE Specifications Page 11.03

Mounting Hole Dimensions	Gage Port	ALUMINUM		DUCTILE IRON	
		Part Number	List Price	Part Number	List Price
Inch	.25 NPTF	CAQ		CAQ/S	
Metric	.25 BSPP	CAQ/M		CAQ/T	

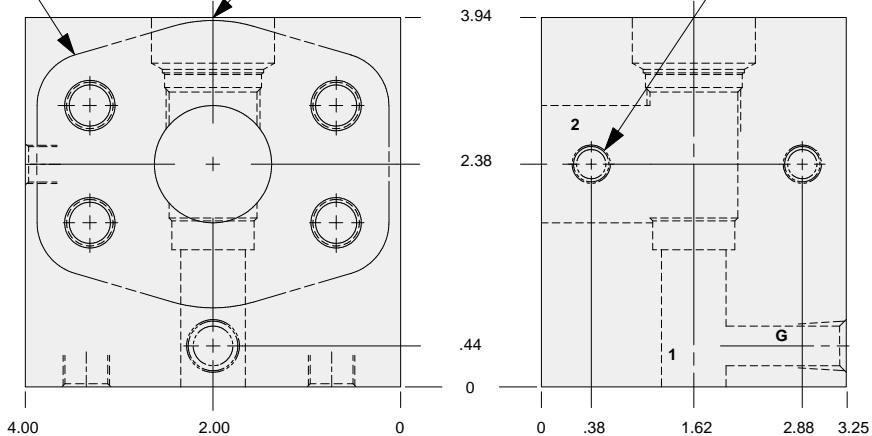
90 degree 1.25" SAE Code 62 flange port body with gage port.



1.25" SAE Code 62
4-Bolt Flange Pattern
2 places.

T-3A Cavity
Locating Shoulder
Depth .59

Mounting Holes:
(opposite side)
Inch: .375-16 UNC-2B x .62 deep.
Metric: M10 x 1.50-6H x .62 deep.
2 places.



TYPICAL CARTRIDGES USED WITH THIS BODY

RPGC - ***	Page 1.06
RPGE - ***	Page 1.08
RDFA - ***	Page 1.10
RQGB - ***	Page 1.12
RPGD - ***	Page 1.14
NQEB - ***	Page 10.16

Instructions for ordering complete cartridge and body assemblies. Page v

Pressure ratings, material specifications. Page 11.02

SAE Specifications Page 11.03

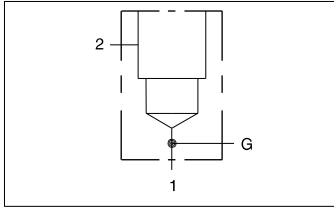
Mounting Hole Dimensions	Gage Port	ALUMINUM		DUCTILE IRON	
		Part Number	List Price	Part Number	List Price
Inch	.25 NPTF	CA5		CA5/S	
Metric	.25 BSPP	CA5/M		CA5/T	



LINE MOUNT BODIES



- Aluminum rated to 3000 psi.
- Ductile Iron rated to 5000 psi.



Sandwich mount through port 1.00" SAE Code 61 body with gage port.

TYPICAL CARTRIDGES USED WITH THIS BODY

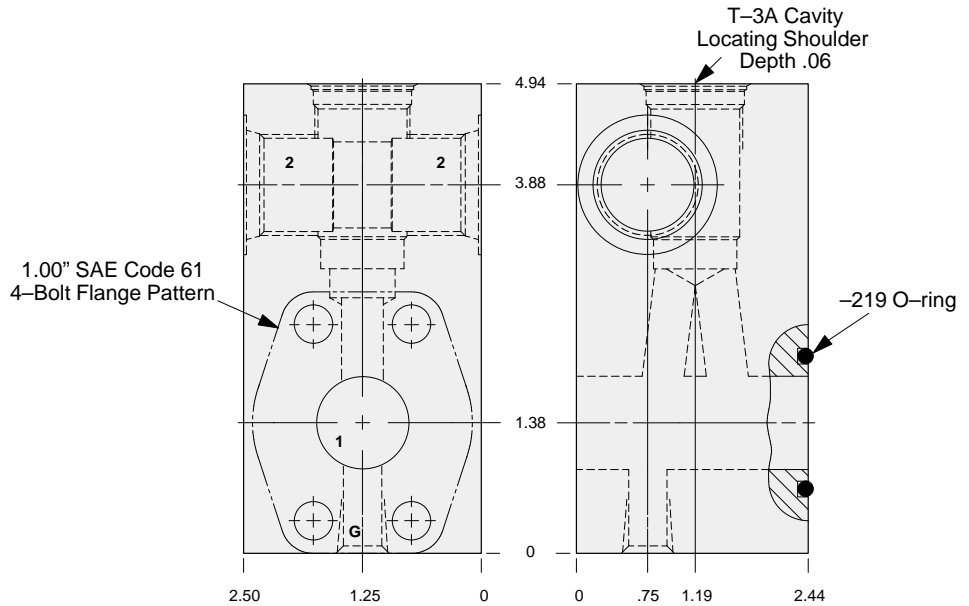
RPGC - ***	Page 1.06
RPGE - ***	Page 1.08
RDFA - ***	Page 1.10
RQGB - ***	Page 1.12
RPGD - ***	Page 1.14
NQEB - ***	Page 10.16

Cartridge seal type determines O-ring type.

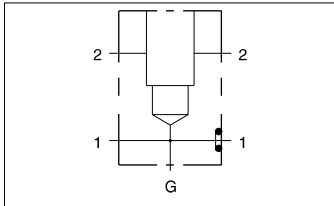
Instructions for ordering complete cartridge and body assemblies. Page v

Pressure ratings, material specifications. Page 11.02

SAE Specifications Page 11.03



Mounting Hole Dimensions	Port 2	Gage Port	ALUMINUM		DUCTILE IRON	
			Part Number	List Price	Part Number	List Price
Inch	.75 NPTF	.25 NPTF	ZQL		ZQL/S	
Inch	SAE-12	.25 NPTF	ZQK		ZQK/S	
Metric	.75 BSPP	.25 BSPP	ZQJ/M		ZQJ/T	



Sandwich mount through port 1.00" SAE Code 62 body with gage port.

TYPICAL CARTRIDGES USED WITH THIS BODY

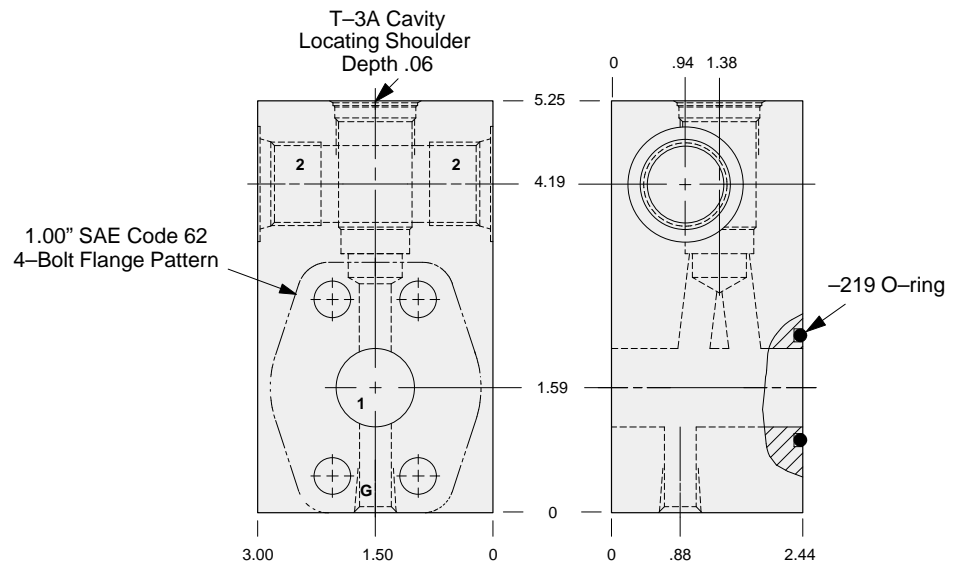
RPGC - ***	Page 1.06
RPGE - ***	Page 1.08
RDFA - ***	Page 1.10
RQGB - ***	Page 1.12
RPGD - ***	Page 1.14
NQEB - ***	Page 10.16

Cartridge seal type determines O-ring type.

Instructions for ordering complete cartridge and body assemblies. Page v

Pressure ratings, material specifications. Page 11.02

SAE Specifications Page 11.03



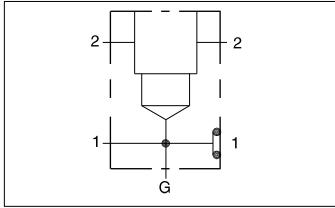
Mounting Hole Dimensions	Port 2	Gage Port	ALUMINUM		DUCTILE IRON	
			Part Number	List Price	Part Number	List Price
Inch	.75 NPTF	.25 NPTF	ZCH		ZCH/S	
Inch	SAE-12	.25 NPTF	ZCG		ZCG/S	
Metric	.75 BSPP	.25 BSPP	ZCF/M		ZCF/T	



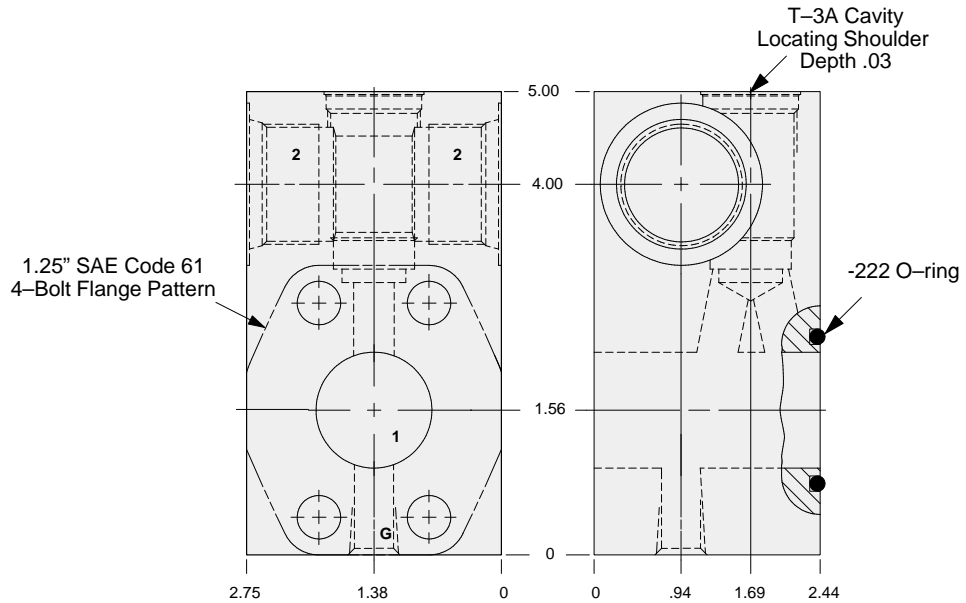
LINE MOUNT BODIES



- Aluminum rated to 3000 psi.
- Ductile Iron rated to 5000 psi.



Sandwich mount through port 1.25" SAE Code 61 body with gage port.



TYPICAL CARTRIDGES USED WITH THIS BODY

- RPGC - *** Page 1.06
- RPGE - *** Page 1.08
- RDFA - *** Page 1.10
- RQGB - *** Page 1.12
- RPGD - *** Page 1.14
- NQEB - *** Page 10.16

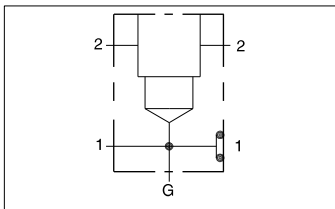
Cartridge seal type determines O-ring type.

Instructions for ordering complete cartridge and body assemblies. Page v

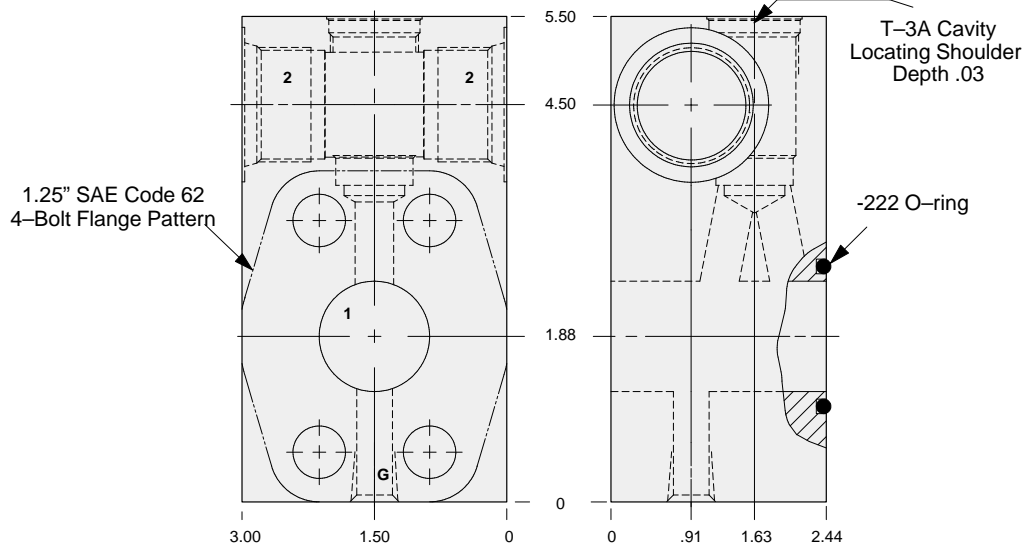
Pressure ratings, material specifications. Page 11.02

SAE Specifications Page 11.03

Mounting Hole Dimensions	Port 2	Gage Port	ALUMINUM		DUCTILE IRON	
			Part Number	List Price	Part Number	List Price
Inch	1.00 NPTF	.25 NPTF	ZQH		ZQH/S	
Inch	SAE-16	.25 NPTF	ZQG		ZQG/S	
Metric	1.00 BSPP	.25 BSPP	ZQF/M		ZQF/T	



Sandwich mount through port 1.25" SAE Code 62 body with gage port.



TYPICAL CARTRIDGES USED WITH THIS BODY

- RPGC - *** Page 1.06
- RPGE - *** Page 1.08
- RDFA - *** Page 1.10
- RQGB - *** Page 1.12
- RPGD - *** Page 1.14
- NQEB - *** Page 10.16

Cartridge seal type determines O-ring type.

Instructions for ordering complete cartridge and body assemblies. Page v

Pressure ratings, material specifications. Page 11.02

SAE Specifications Page 11.03

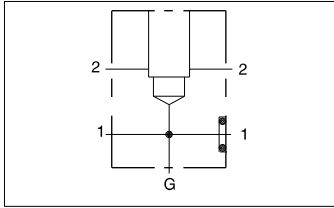
Mounting Hole Dimensions	Port 2	Gage Port	ALUMINUM		DUCTILE IRON	
			Part Number	List Price	Part Number	List Price
Inch	1.00 NPTF	.25 NPTF	ZBX		ZBX/S	
Inch	SAE-16	.25 NPTF	ZBW		ZBW/S	
Metric	1.00 BSPP	.25 BSPP	ZBV/M		ZBV/T	



LINE MOUNT BODIES



- Aluminum rated to 3000 psi.
- Ductile Iron rated to 5000 psi.



Sandwich mount through port 1.25" SAE Code 61 flange port body with gage port.

TYPICAL CARTRIDGES USED WITH THIS BODY

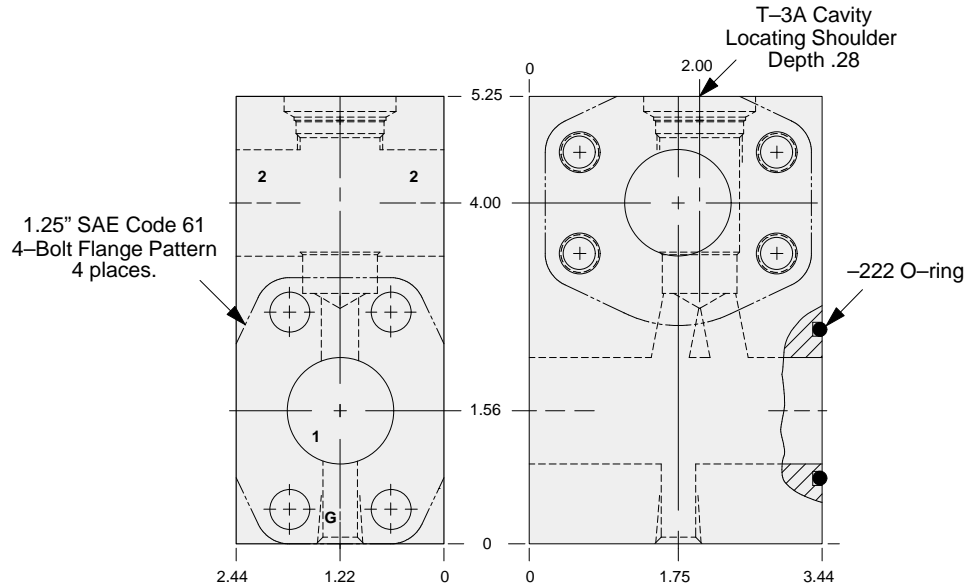
RPGC - ***	Page 1.06
RPGE - ***	Page 1.08
RDFA - ***	Page 1.10
RQGB - ***	Page 1.12
RPGD - ***	Page 1.14
NQEB - ***	Page 10.16

Cartridge seal type determines O-ring type.

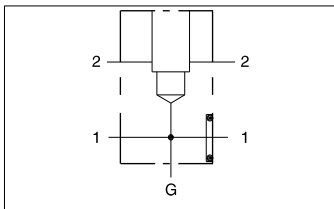
Instructions for ordering complete cartridge and body assemblies. Page v

Pressure ratings, material specifications. Page 11.02

SAE Specifications Page 11.03



Mounting Hole Dimensions	Gage Port	ALUMINUM		DUCTILE IRON	
		Part Number	List Price	Part Number	List Price
Inch	.25 NPTF	ZQE		ZQE/S	
Metric	.25 BSPP	ZQE/M		ZQE/T	



Sandwich mount through port 1.25" SAE Code 62 flange port body with gage port.

TYPICAL CARTRIDGES USED WITH THIS BODY

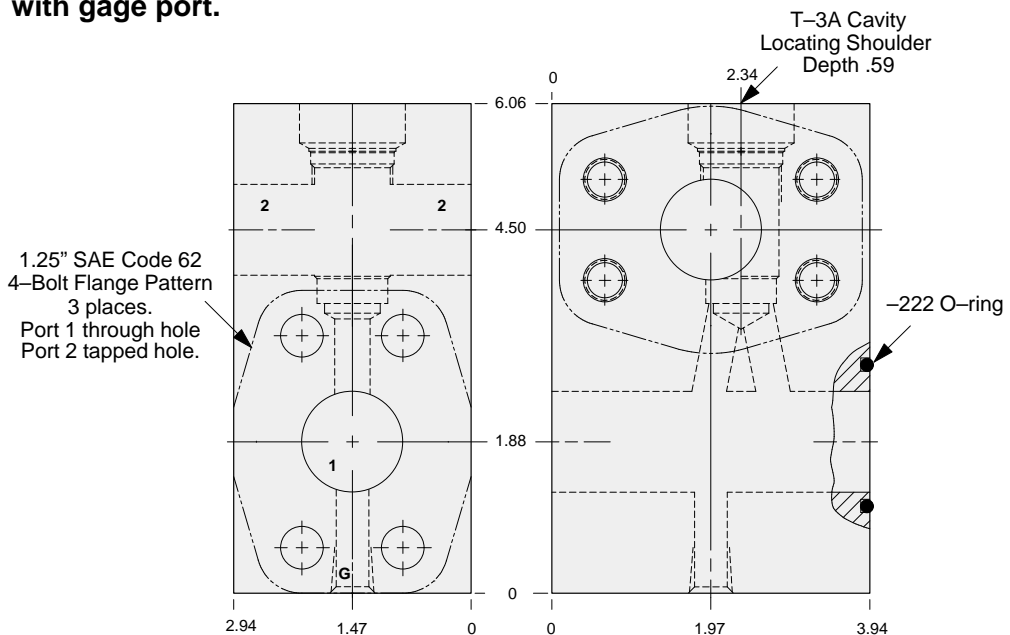
RPGC - ***	Page 1.06
RPGE - ***	Page 1.08
RDFA - ***	Page 1.10
RQGB - ***	Page 1.12
RPGD - ***	Page 1.14
NQEB - ***	Page 10.16

Cartridge seal type determines O-ring type.

Instructions for ordering complete cartridge and body assemblies. Page v

Pressure ratings, material specifications. Page 11.02

SAE Specifications Page 11.03



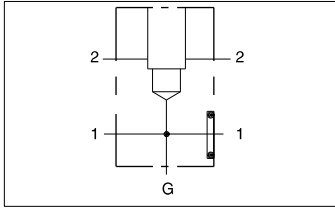
Mounting Hole Dimensions	Gage Port	ALUMINUM		DUCTILE IRON	
		Part Number	List Price	Part Number	List Price
Inch	.25 NPTF	ZDB		ZDB/S	
Metric	.25 BSPP	ZDB/M		ZDB/T	



LINE MOUNT BODIES



- Aluminum rated to 3000 psi.
- Ductile Iron rated to 5000 psi.



TYPICAL CARTRIDGES USED WITH THIS BODY

RPGC - ***	Page 1.06
RPGE - ***	Page 1.08
RDFA - ***	Page 1.10
RQGB - ***	Page 1.12
RPGD - ***	Page 1.14
NQEB - ***	Page 10.16

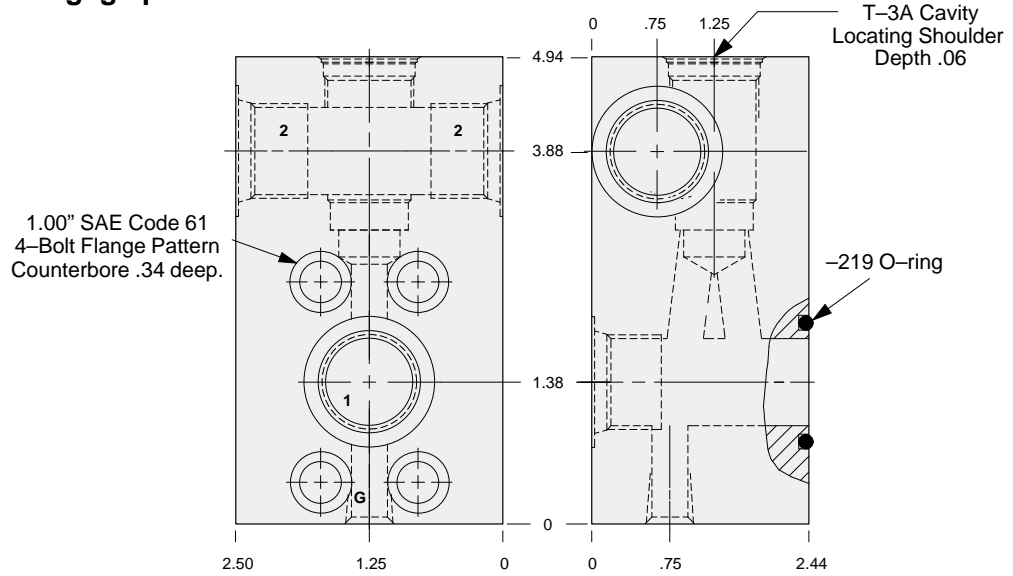
Cartridge seal type determines O-ring type.

Instructions for ordering complete cartridge and body assemblies. Page v

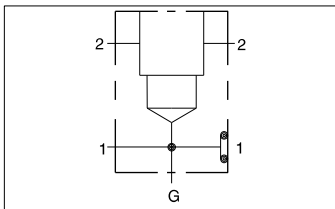
Pressure ratings, material specifications. Page 11.02

SAE Specifications Page 11.03

Flange mount through port 1.00" SAE Code 61 body with threaded outlet and gage port.



Mounting Hole Dimensions	Ports 1 & 2	Gage Port	ALUMINUM		DUCTILE IRON	
			Part Number	List Price	Part Number	List Price
Inch	.75 NPTF	.25 NPTF	ZCL		ZCL/S	
Inch	SAE-12	.25 NPTF	ZCK		ZCK/S	
Metric	.75 BSPP	.25 BSPP	ZCJ/M		ZCJ/T	



TYPICAL CARTRIDGES USED WITH THIS BODY

RPGC - ***	Page 1.06
RPGE - ***	Page 1.08
RDFA - ***	Page 1.10
RQGB - ***	Page 1.12
RPGD - ***	Page 1.14
NQEB - ***	Page 10.16

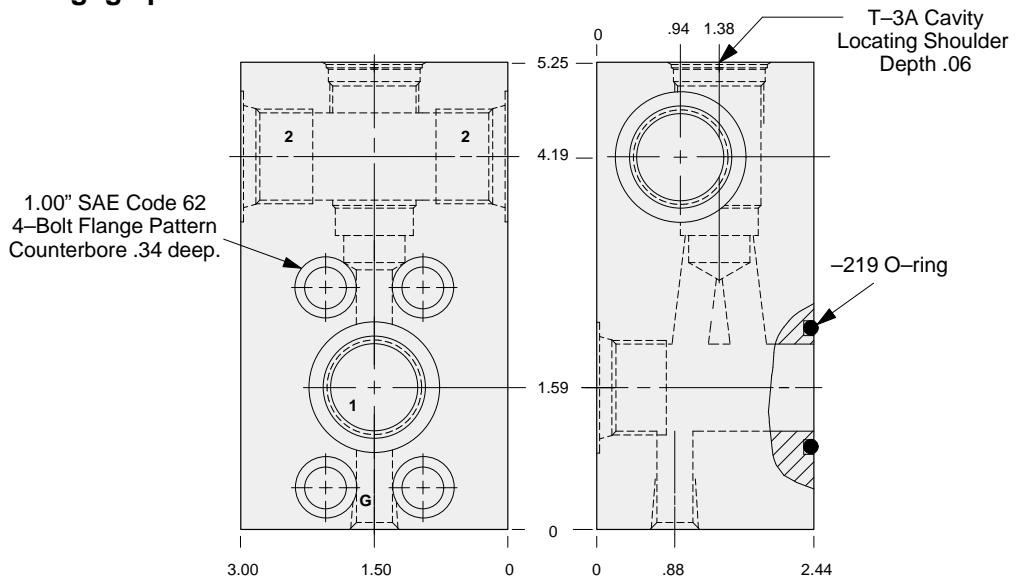
Cartridge seal type determines O-ring type.

Instructions for ordering complete cartridge and body assemblies. Page v

Pressure ratings, material specifications. Page 11.02

SAE Specifications Page 11.03

Flange mount through port 1.00" SAE Code 62 body with threaded outlet and gage port.



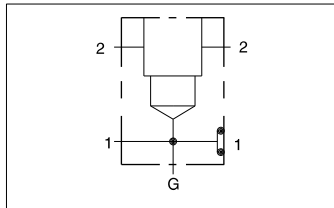
Mounting Hole Dimensions	Ports 1 & 2	Gage Port	ALUMINUM		DUCTILE IRON	
			Part Number	List Price	Part Number	List Price
Inch	.75 NPTF	.25 NPTF	ZCD		ZCD/S	
Inch	SAE-12	.25 NPTF	ZCC		ZCC/S	
Metric	.75 BSPP	.25 BSPP	ZCB/M		ZCB/T	



LINE MOUNT BODIES



- Aluminum rated to 3000 psi.
- Ductile Iron rated to 5000 psi.



Flange mount through port 1.25" SAE Code 61 body with threaded outlet and gage port.

TYPICAL CARTRIDGES USED WITH THIS BODY

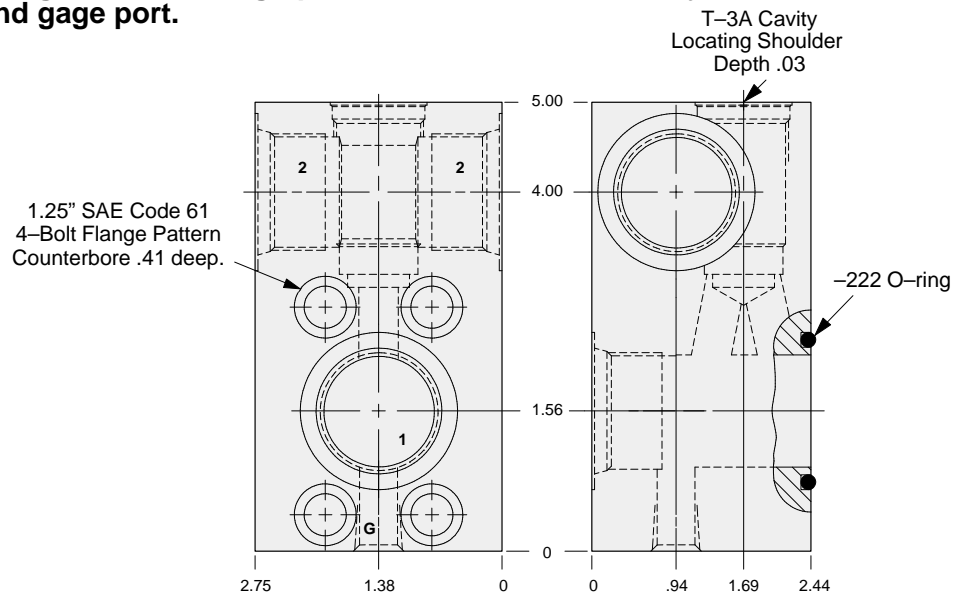
- RPGC - *** Page 1.06
- RPGE - *** Page 1.08
- RDFA - *** Page 1.10
- RQGB - *** Page 1.12
- RPGD - *** Page 1.14
- NQEB - *** Page 10.16

Cartridge seal type determines O-ring type.

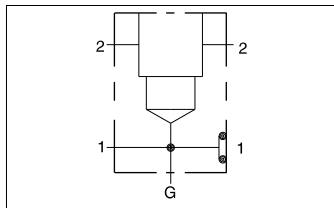
Instructions for ordering complete cartridge and body assemblies. Page v

Pressure ratings, material specifications. Page 11.02

SAE Specifications Page 11.03



Mounting Hole Dimensions	Ports 1 & 2	Gage Port	ALUMINUM		DUCTILE IRON	
			Part Number	List Price	Part Number	List Price
Inch	1.00 NPTF	.25 NPTF	ZBZ		ZBZ/S	
Inch	SAE-16	.25 NPTF	ZKE		ZKE/S	
Metric	1.00 BSPP	.25 BSPP	ZBY/M		ZBY/T	



Flange mount through port 1.25" SAE Code 62 body with threaded outlet and gage port.

TYPICAL CARTRIDGES USED WITH THIS BODY

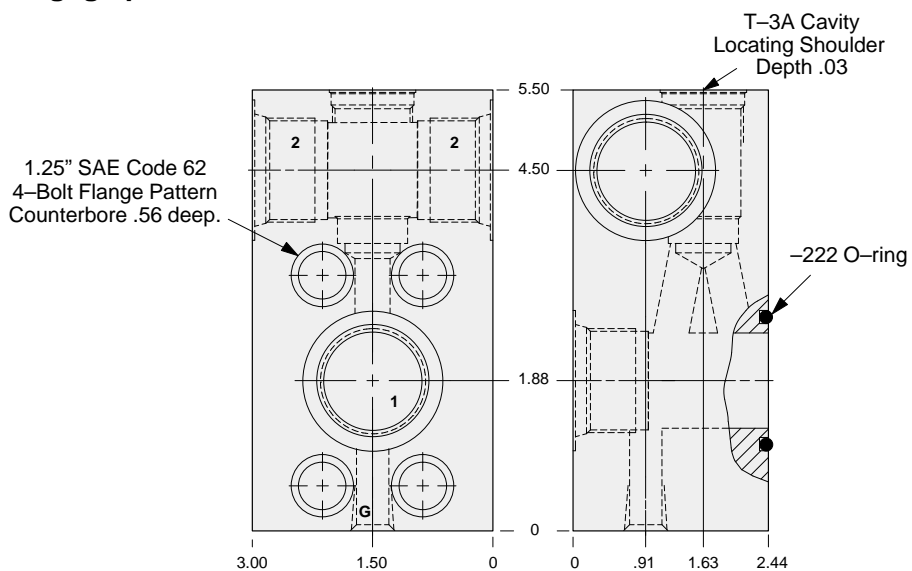
- RPGC - *** Page 1.06
- RPGE - *** Page 1.08
- RDFA - *** Page 1.10
- RQGB - *** Page 1.12
- RPGD - *** Page 1.14
- NQEB - *** Page 10.16

Cartridge seal type determines O-ring type.

Instructions for ordering complete cartridge and body assemblies. Page v

Pressure ratings, material specifications. Page 11.02

SAE Specifications Page 11.03



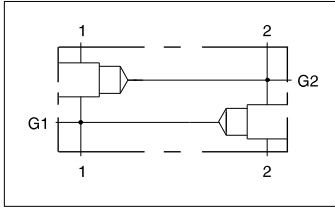
Mounting Hole Dimensions	Ports 1 & 2	Gage Port	ALUMINUM		DUCTILE IRON	
			Part Number	List Price	Part Number	List Price
Inch	1.00 NPTF	.25 NPTF	ZBT		ZBT/S	
Inch	SAE-16	.25 NPTF	ZBS		ZBS/S	
Metric	1.00 BSPP	.25 BSPP	ZBR/M		ZBR/T	



LINE MOUNT BODIES



- Aluminum rated to 3000 psi.
- Ductile Iron rated to 5000 psi.



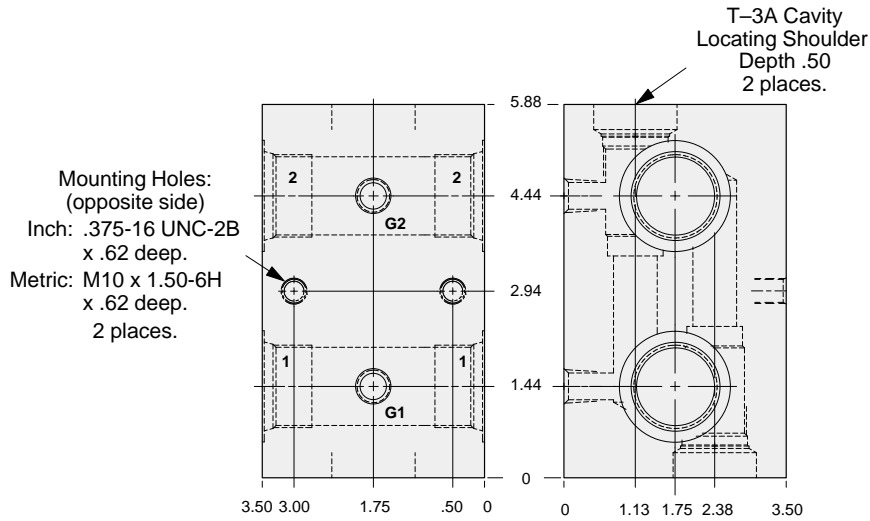
TYPICAL CARTRIDGES USED WITH THIS BODY

- RPGC - *** Page 1.06
 RPGE - *** Page 1.08
 RDFA - *** Page 1.10
 RQGB - *** Page 1.12

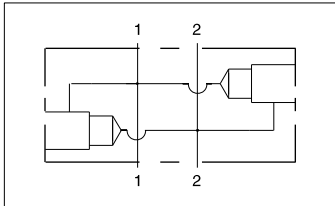
Instructions for ordering complete cartridge and body assemblies. Page v

Pressure ratings, material specifications. Page 11.02

Two cavity body with gage ports for cross-port relief applications.



Mounting Hole Dimensions	Ports 1 & 2	Gage Ports	ALUMINUM		DUCTILE IRON	
			Part Number	List Price	Part Number	List Price
Inch	.75 NPTF	.25 NPTF	YCD		YCD/S	
Inch	1.00 NPTF	.25 NPTF	YCE		YCE/S	
Inch	SAE-12	.25 NPTF	YCL		YCL/S	
Inch	SAE-16	.25 NPTF	YCM		YCM/S	
Metric	.75 BSPP	.25 BSPP	YCW		YCW/S	
Metric	1.00 BSPP	.25 BSPP	YCX		YCX/S	



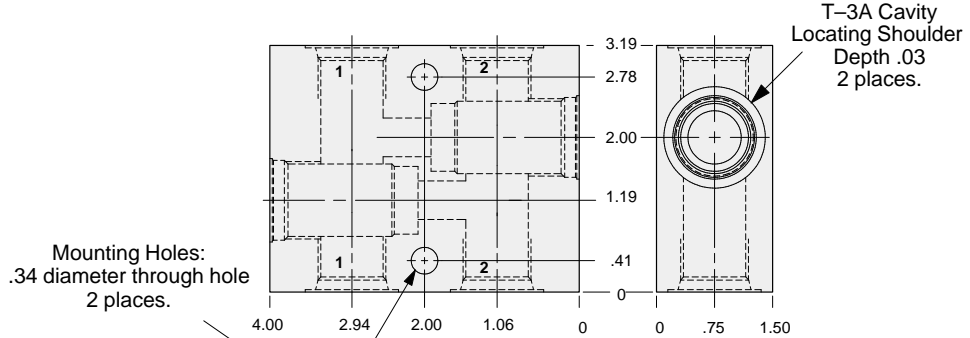
TYPICAL CARTRIDGES USED WITH THIS BODY

- RPGC - *** Page 1.06
 RPGE - *** Page 1.08
 RDFA - *** Page 1.10
 RQGB - *** Page 1.12

Instructions for ordering complete cartridge and body assemblies. Page v

Pressure ratings, material specifications. Page 11.02

Two cavity body for cross-port relief applications.



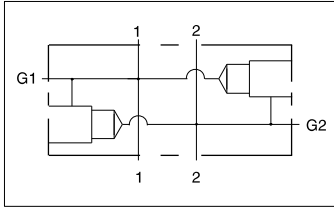
Ports 1 & 2	ALUMINUM		DUCTILE IRON	
	Part Number	List Price	Part Number	List Price
.25 NPTF	YBA		YBA/S	
.375 NPTF	YBB		YBB/S	
.50 NPTF	YBC		YBC/S	
.75 NPTF	YBD		YBD/S	
SAE-6	YBI		YBI/S	
SAE-8	YBJ		YBJ/S	
SAE-10	YBK		YBK/S	
.75 BSPP	YBO		YBO/S	
.25 BSPP	YBT		YBT/S	
.375 BSPP	YBU		YBU/S	
.50 BSPP	YBV		YBV/S	



LINE MOUNT BODIES



- Aluminum rated to 3000 psi.
- Ductile Iron rated to 5000 psi.

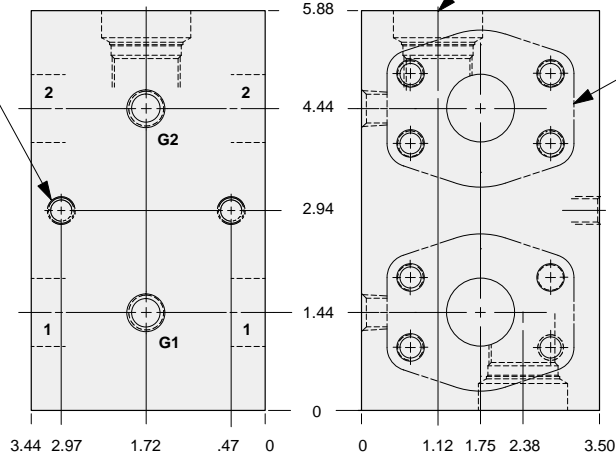


Two cavity 1.00" SAE Code 61 flange port body with gage ports for cross-port relief applications.

Mounting Holes:
(opposite side)
Inch: .375-16 UNC-2B x .62
Metric: M10 x 1.50-6H x .62
2 places.

T-3A Cavity
Locating Shoulder
Depth .50
2 places.

1.00" SAE Code 61
4-Bolt Flange
Pattern
4 places.



TYPICAL CARTRIDGES USED WITH THIS BODY

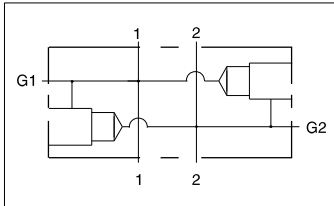
RPGC - ***	Page 1.06
RPGE - ***	Page 1.08
RDFA - ***	Page 1.10
RQGB - ***	Page 1.12

Instructions for ordering complete cartridge and body assemblies. Page v

Pressure ratings, material specifications. Page 11.02

SAE Specifications Page 11.03

Mounting Hole Dimensions	Gage Ports	ALUMINUM		DUCTILE IRON	
		Part Number	List Price	Part Number	List Price
Inch	.25 NPTF	YCP		YCP/S	
Metric	.25 BSPP	YCP/M		YCP/T	

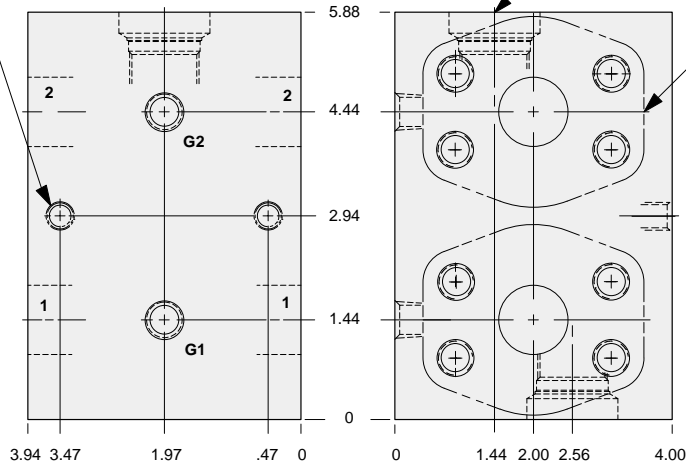


Two cavity 1.00" SAE Code 62 flange port body with gage ports for cross-port relief applications.

Mounting Holes:
(opposite side)
Inch: .375-16 UNC-2B x .62 deep.
Metric: M10 x 1.50-6H x .62 deep.
2 places.

T-3A Cavity
Locating Shoulder
Depth .40
2 places.

1.00" SAE Code 62
4-Bolt Flange
Pattern
4 places.



TYPICAL CARTRIDGES USED WITH THIS BODY

RPGC - ***	Page 1.06
RPGE - ***	Page 1.08
RDFA - ***	Page 1.10
RQGB - ***	Page 1.12

Instructions for ordering complete cartridge and body assemblies. Page v

Pressure ratings, material specifications. Page 11.02

SAE Specifications Page 11.03

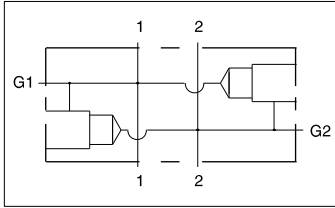
Mounting Hole Dimensions	Gage Ports	ALUMINUM		DUCTILE IRON	
		Part Number	List Price	Part Number	List Price
Inch	.25 NPTF	YC4		YC4/S	
Metric	.25 BSPP	YC4/M		YC4/T	



LINE MOUNT BODIES

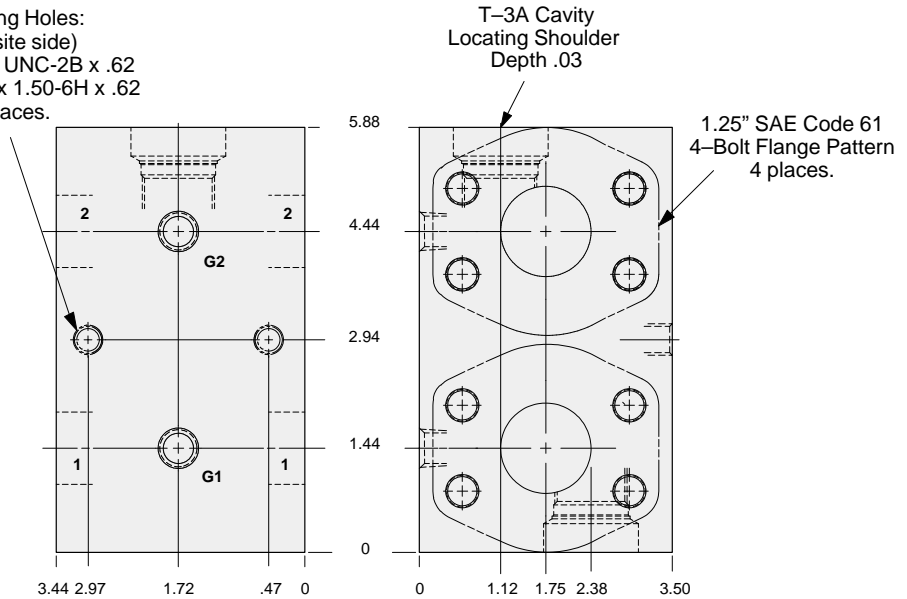


- Aluminum rated to 3000 psi.
- Ductile Iron rated to 5000 psi.



Two cavity 1.25" SAE Code 61 flange port body with gage ports for cross-port relief applications.

Mounting Holes:
(opposite side)
Inch: .375-16 UNC-2B x .62
Metric: M10 x 1.50-6H x .62
2 places.



TYPICAL CARTRIDGES USED WITH THIS BODY

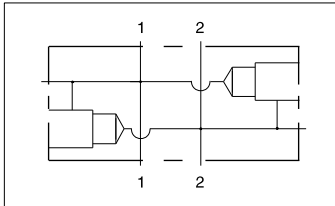
- RPGC - *** Page 1.06
- RPGE - *** Page 1.08
- RDFA - *** Page 1.10
- RQGB - *** Page 1.12

Instructions for ordering complete cartridge and body assemblies. Page v

Pressure ratings, material specifications. Page 11.02

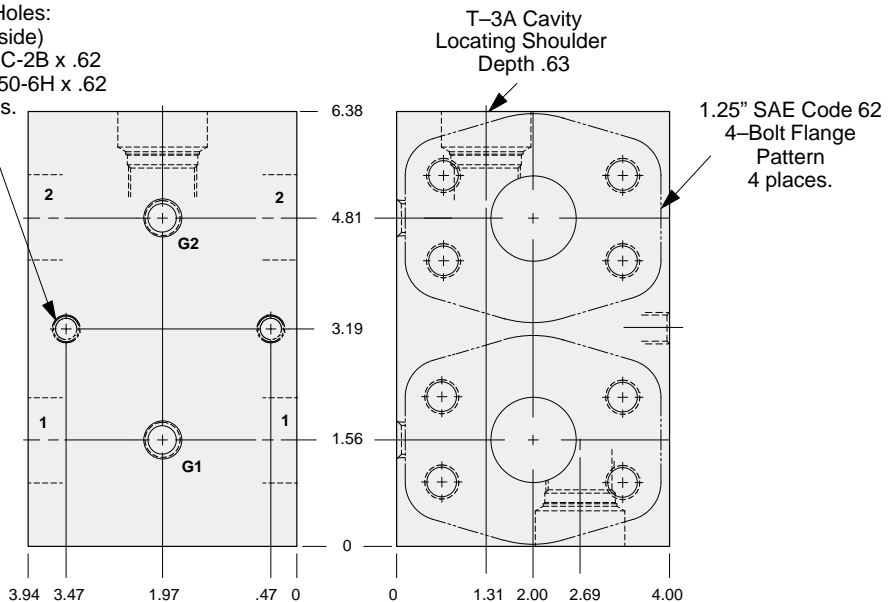
SAE Specifications Page 11.03

Mounting Hole Dimensions	Gage Ports	ALUMINUM		DUCTILE IRON	
		Part Number	List Price	Part Number	List Price
Inch	.25 NPTF	YCQ		YCQ/S	
Metric	.25 BSPP	YCQ/M		YCQ/T	



Two cavity 1.25" SAE Code 62 flange port body with gage ports for cross-port relief applications.

Mounting Holes:
(opposite side)
Inch: .375-16 UNC-2B x .62
Metric: M10 x 1.50-6H x .62
2 places.



TYPICAL CARTRIDGES USED WITH THIS BODY

- RPGC - *** Page 1.06
- RPGE - *** Page 1.08
- RDFA - *** Page 1.10
- RQGB - *** Page 1.12

Instructions for ordering complete cartridge and body assemblies. Page v

Pressure ratings, material specifications. Page 11.02

SAE Specifications Page 11.03

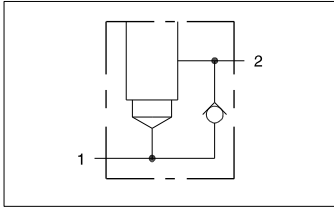
Mounting Hole Dimensions	Gage Ports	ALUMINUM		DUCTILE IRON	
		Part Number	List Price	Part Number	List Price
Inch	.25 NPTF	YC5		YC5/S	
Metric	.25 BSPP	YC5/M		YC5/T	



LINE MOUNT BODIES



- Aluminum rated to 3000 psi.
- Ductile Iron rated to 5000 psi.



TYPICAL CARTRIDGES USED WITH THIS BODY

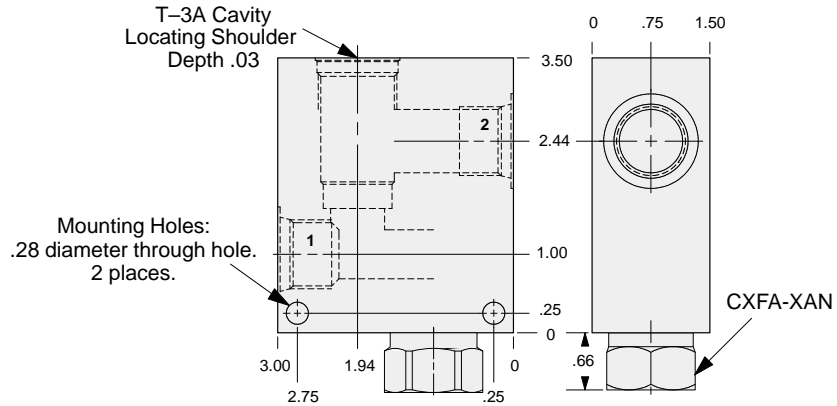
- RPGC - *** Page 1.06
- RPGE - *** Page 1.08
- RDFA - *** Page 1.10
- RQGB - *** Page 1.12
- RPGD - *** Page 1.14

Cartridge seal type determines check valve seal type.

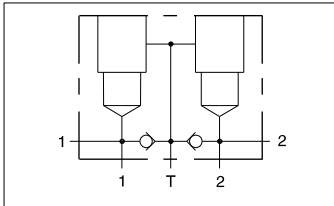
Instructions for ordering complete cartridge and body assemblies. Page v

Pressure ratings, material specifications. Page 11.02

Body with reverse free flow check.



Ports 1 & 2	ALUMINUM		DUCTILE IRON	
	Part Number	List Price	Part Number	List Price
.375 NPTF	CNB		CNB/S	
.50 NPTF	CNC		CNC/S	
.75 NPTF	CND		CND/S	
SAE-6	CNI		CNI/S	
SAE-8	CNJ		CNJ/S	
SAE-10	CNK		CNK/S	
.375 BSPP	CNU		CNU/S	
.50 BSPP	CNV		CNV/S	
.75 BSPP	CNW		CNW/S	



TYPICAL CARTRIDGES USED WITH THIS BODY

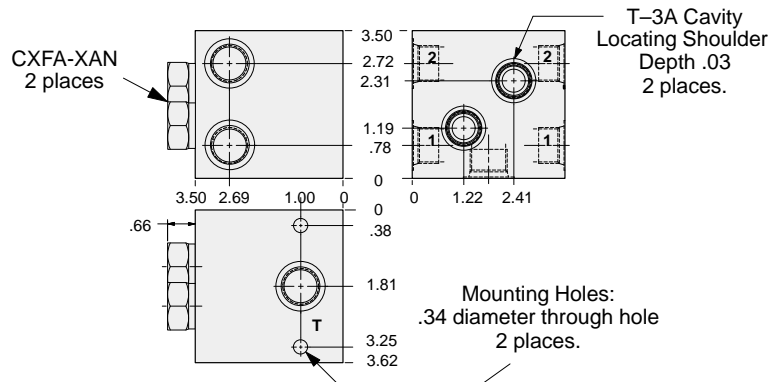
- RPGC - *** Page 1.06
- RPGE - *** Page 1.08
- RDFA - *** Page 1.10
- RQGB - *** Page 1.12

Cartridge seal type determines check valve seal type.

Instructions for ordering complete cartridge and body assemblies. Page v

Pressure ratings, material specifications. Page 11.02

Two cavity body with make-up checks for cross-port relief applications.



Ports 1 & 2	ALUMINUM		DUCTILE IRON	
	Part Number	List Price	Part Number	List Price
.375 NPTF	CMB		CMB/S	
.50 NPTF	CMC		CMC/S	
.75 NPTF	CMD		CMD/S	
SAE-8	CMJ		CMJ/S	
SAE-10	CMK		CMK/S	
SAE-12	CML		CML/S	
.375 BSPP	CMU		CMU/S	
.50 BSPP	CMV		CMV/S	
.75 BSPP	CMW		CMW/S	