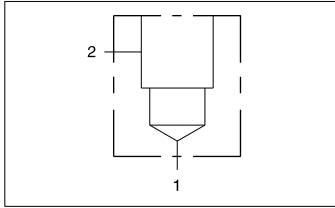




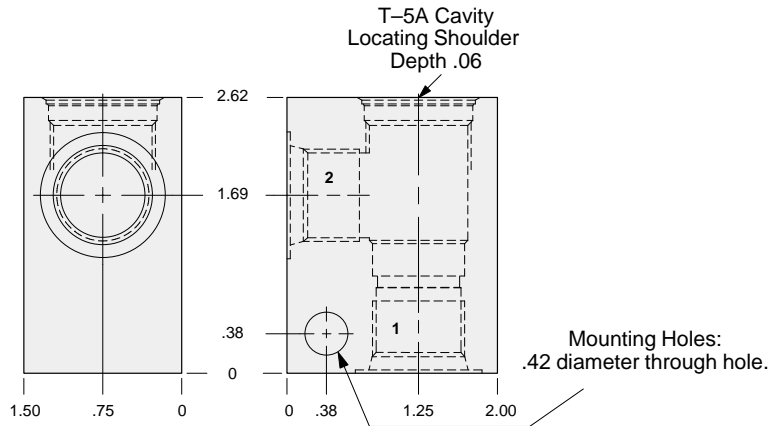
# LINE MOUNT BODIES



- Aluminum rated to 3000 psi.
- Ductile Iron rated to 5000 psi.



## 90 degree body.



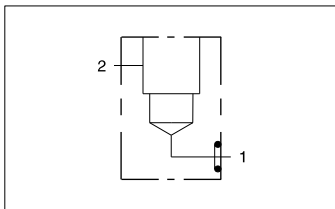
### TYPICAL CARTRIDGES USED WITH THIS BODY

CXFA - ***	Page 5.08
CXED - ***	Page 5.10
NFDC - ***	Page 5.12
CNEC - ***	Page 5.14
NCEB - ***	Page 5.16
NCEC - ***	Page 5.18
FXDA - ***	Page 5.20
FCDB - ***	Page 5.22
FDCB - ***	Page 5.24
FQEA - ***	Page 10.14

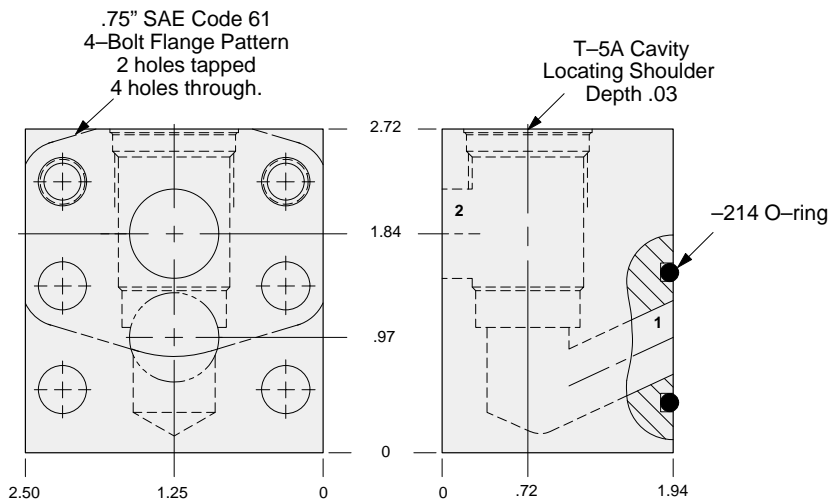
Instructions for ordering complete cartridge and body assemblies. Page v

Pressure ratings, material specifications. Page 11.02

Ports 1 & 2	ALUMINUM		DUCTILE IRON	
	Part Number	List Price	Part Number	List Price
.25 NPTF	<b>DAA</b>		<b>DAA/S</b>	
.375 NPTF	<b>DAB</b>		<b>DAB/S</b>	
.50 NPTF	<b>DAC</b>		<b>DAC/S</b>	
SAE-6	<b>DAI</b>		<b>DAI/S</b>	
SAE-8	<b>DAJ</b>		<b>DAJ/S</b>	
SAE-10	<b>DAK</b>		<b>DAK/S</b>	
.25 BSPP	<b>DAT</b>		<b>DAT/S</b>	
.375 BSPP	<b>DAU</b>		<b>DAU/S</b>	
.50 BSPP	<b>DAV</b>		<b>DAV/S</b>	



## Direct mount .75" SAE Code 61 body



### TYPICAL CARTRIDGES USED WITH THIS BODY

CXFA - ***	Page 5.08
CXED - ***	Page 5.10
NFDC - ***	Page 5.12
CNEC - ***	Page 5.14
NCEB - ***	Page 5.16
NCEC - ***	Page 5.18
FXDA - ***	Page 5.20
FCDB - ***	Page 5.22
FDCB - ***	Page 5.24
FQEA - ***	Page 10.14

Cartridge seal type determines O-ring type.

Instructions for ordering complete cartridge and body assemblies. Page v

Pressure ratings, material specifications. Page 11.02

Mounting Hole Dimensions	ALUMINUM		DUCTILE IRON	
	Part Number	List Price	Part Number	List Price
Inch	<b>ZKS</b>		<b>ZKS/S</b>	
Metric	<b>ZKS/M</b>		<b>ZKS/T</b>	

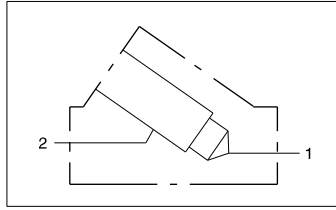
S2  
T5A



# LINE MOUNT BODIES



- Aluminum rated to 3000 psi.
- Ductile Iron rated to 5000 psi.



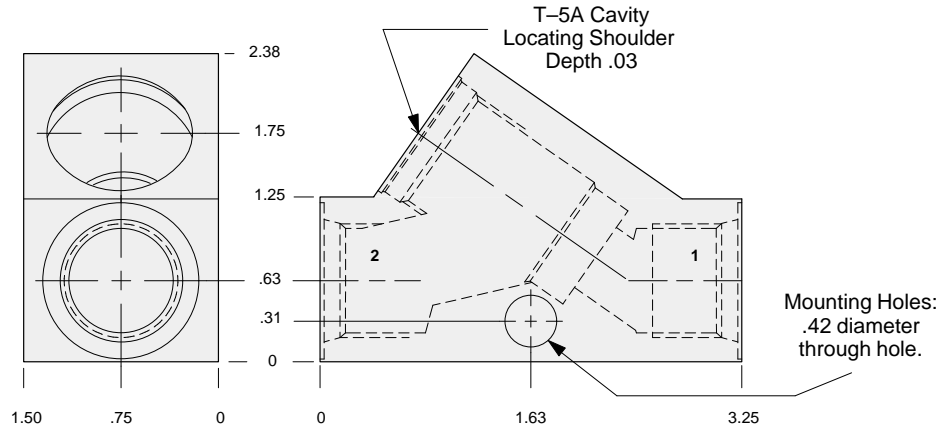
### TYPICAL CARTRIDGES USED WITH THIS BODY

CXFA - ***	Page 5.08
CXED - ***	Page 5.10
NFDC - ***	Page 5.12
CNEC - ***	Page 5.14
NCEB - ***	Page 5.16
NCEC - ***	Page 5.18
FXDA - ***	Page 5.20
FCDB - ***	Page 5.22
FDCB - ***	Page 5.24
FQEA - ***	Page 10.14

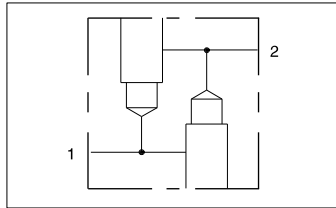
Instructions for ordering complete cartridge and body assemblies. Page v

Pressure ratings, material specifications. Page 11.02

### Inline body.



Ports 1 & 2	ALUMINUM		DUCTILE IRON	
	Part Number	List Price	Part Number	List Price
.375 NPTF	DCB		DCB/S	
.50 NPTF	DCC		DCC/S	
SAE-6	DCI		DCI/S	
SAE-8	DCJ		DCJ/S	
SAE-10	DCK		DCK/S	
.375 BSPP	DCU		DCU/S	
.50 BSPP	DCV		DCV/S	



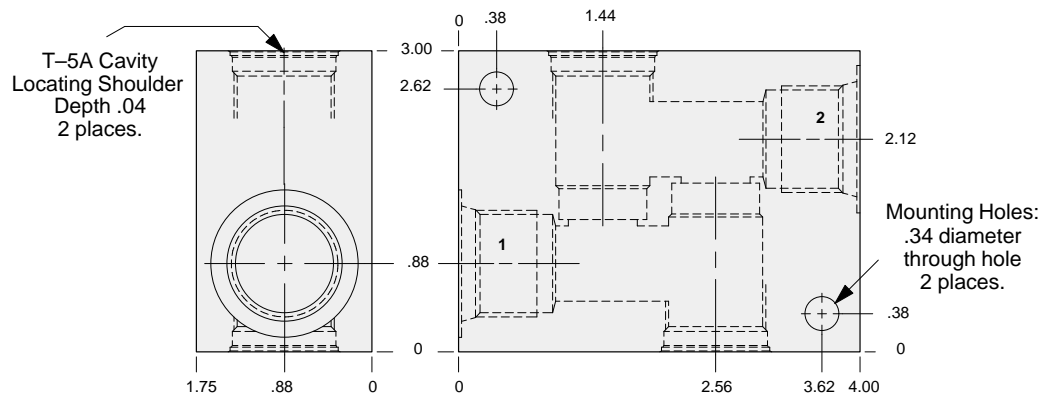
### TYPICAL CARTRIDGES USED WITH THIS BODY

CXFA - ***	Page 5.08
NFDC - ***	Page 5.12
FXDA - ***	Page 5.20

Instructions for ordering complete cartridge and body assemblies. Page v

Pressure ratings, material specifications. Page 11.02

### Two cavity body.



Ports 1 & 2	ALUMINUM		DUCTILE IRON	
	Part Number	List Price	Part Number	List Price
.375 NPTF	XWA		XWA/S	
.50 NPTF	XWB		XWB/S	
.75 NPTF	XWC		XWC/S	
SAE-8	XWD		XWD/S	
SAE-10	XWF		XWF/S	
SAE-12	XWG		XWG/S	
.375 BSPP	XWH		XWH/S	
.50 BSPP	XWJ		XWJ/S	
.75 BSPP	XWK		XWK/S	

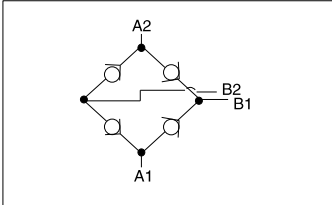
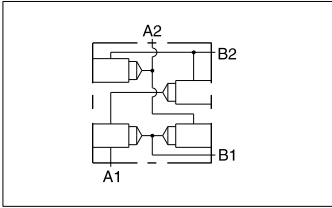


# LINE MOUNT BODIES



- Aluminum rated to 3000 psi.
- Ductile Iron rated to 5000 psi.

## Rectifier body.

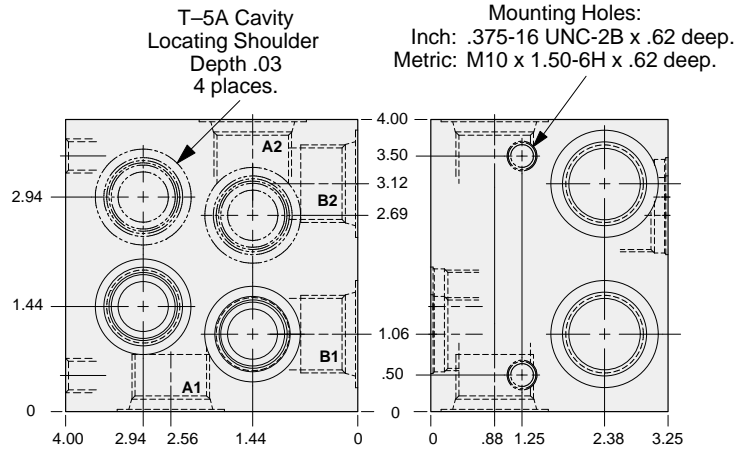


### TYPICAL CARTRIDGES USED WITH THIS BODY

CXFA - \*\*\* Page 5.08

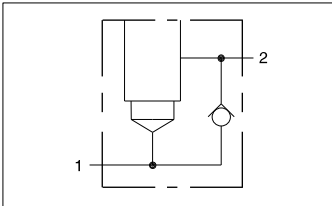
Instructions for ordering complete cartridge and body assemblies. Page v

Pressure ratings, material specifications. Page 11.02



Mounting Hole Dimensions	All Ports	ALUMINUM		DUCTILE IRON	
		Part Number	List Price	Part Number	List Price
Inch	.50 NPTF	YSL		YSL/S	
Inch	.75 NPTF	YSM		YSM/S	
Inch	SAE-10	YSN		YSN/S	
Inch	SAE-12	YSO		YSO/S	
Metric	.50 BSPP	YSP		YSP/S	
Metric	.75 BSPP	YSQ		YSQ/S	

## Body with reverse free flow check.



### TYPICAL CARTRIDGES USED WITH THIS BODY

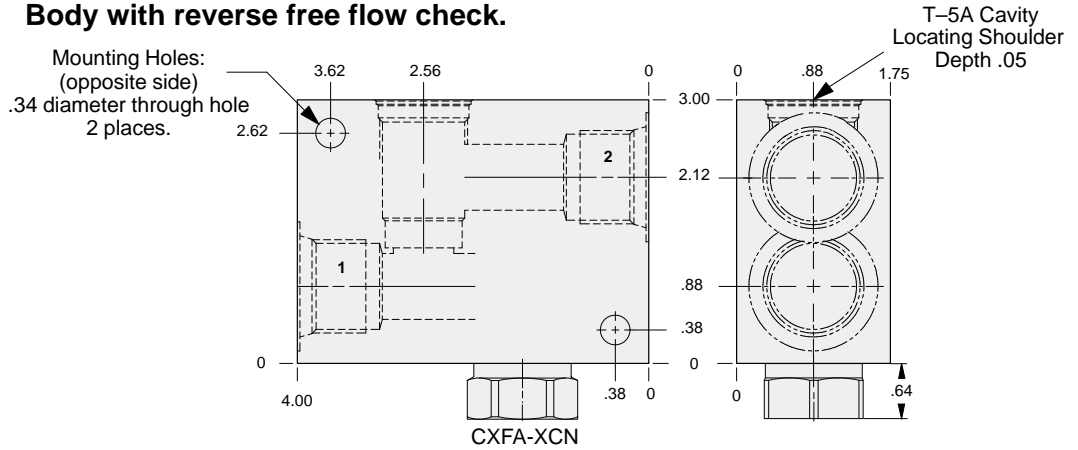
NFDC - \*\*\* Page 5.12

FXDA - \*\*\* Page 5.20

Cartridge seal type determines check valve seal type.

Instructions for ordering complete cartridge and body assemblies. Page v

Pressure ratings, material specifications. Page 11.02



Ports 1 & 2	ALUMINUM		DUCTILE IRON	
	Part Number	List Price	Part Number	List Price
.375 NPTF	DNB		DNB/S	
.50 NPTF	DNC		DNC/S	
.75 NPTF	DND		DND/S	
SAE-8	DNJ		DNJ/S	
SAE-10	DNK		DNK/S	
SAE-12	DNL		DNL/S	
.375 BSPP	DNU		DNU/S	
.50 BSPP	DNV		DNV/S	
.75 BSPP	DNW		DNW/S	

S2  
T5A