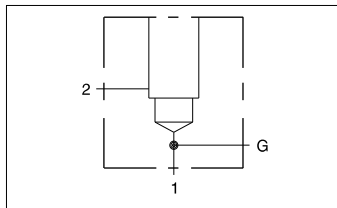




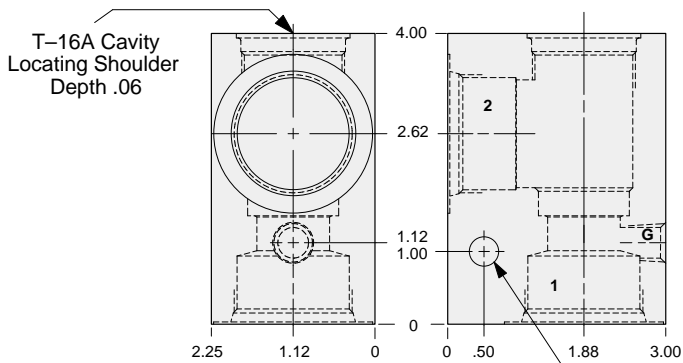
LINE MOUNT BODIES



- Aluminum rated to 3000 psi.
- Ductile Iron rated to 5000 psi.



90 degree body with gage port.



Mounting Holes:
.42 diameter
through hole.

S3
T16A

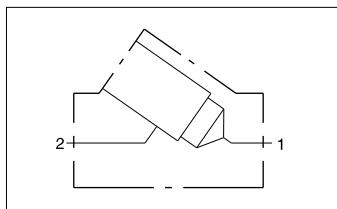
TYPICAL CARTRIDGES USED WITH THIS BODY

RPIC - ***	Page 1.07
RPIE - ***	Page 1.09
RDHA - ***	Page 1.11
RQIB - ***	Page 1.13
RPID - ***	Page 1.15
CXHA - ***	Page 5.09
CXGD - ***	Page 5.11
NFEC - ***	Page 5.13
CNGC - ***	Page 5.15
NCFB - ***	Page 5.17
NCFC - ***	Page 5.19
FXEA - ***	Page 5.21
FCEB - ***	Page 5.23
FDEA - ***	Page 5.25
FQGA - ***	Page 10.15

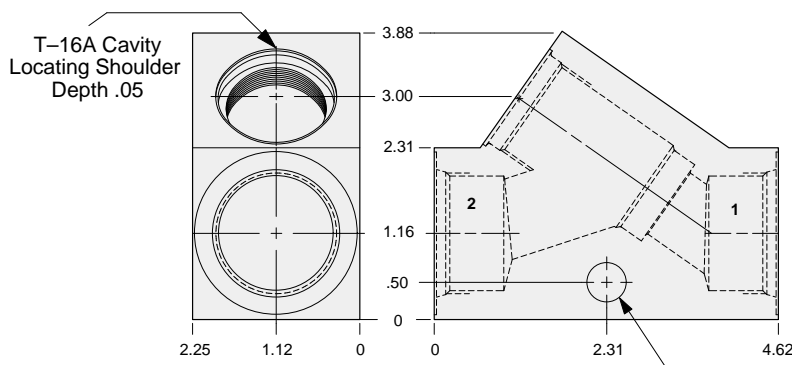
Instructions for ordering complete cartridge and body assemblies. Page v

Pressure ratings, material specifications. Page 11.02

Ports 1 & 2	Gage Port	ALUMINUM		DUCTILE IRON	
		Part Number	List Price	Part Number	List Price
.75 NPTF	.25 NPTF	IAD		IAD/S	
1.00 NPTF	.25 NPTF	IAE		IAE/S	
1.25 NPTF	.25 NPTF	IAF		IAF/S	
SAE-12	.25 NPTF	IAL		IAL/S	
SAE-16	.25 NPTF	IAM		IAM/S	
SAE-20	.25 NPTF	IAN		IAN/S	
.75 BSPP	.25 BSPP	IAW		IAW/S	
1.00 BSPP	.25 BSPP	IAX		IAX/S	
1.25 BSPP	.25 BSPP	IAY		IAY/S	



Inline body.



Mounting Holes:
.53 diameter
through hole.

TYPICAL CARTRIDGES USED WITH THIS BODY

RPIC - ***	Page 1.07
RPIE - ***	Page 1.09
RDHA - ***	Page 1.11
RQIB - ***	Page 1.13
RPID - ***	Page 1.15
CXHA - ***	Page 5.09
CXGD - ***	Page 5.11
NFEC - ***	Page 5.13
CNGC - ***	Page 5.15
NCFB - ***	Page 5.17
NCFC - ***	Page 5.19
FXEA - ***	Page 5.21
FCEB - ***	Page 5.23
FDEA - ***	Page 5.25
FQGA - ***	Page 10.15

Instructions for ordering complete cartridge and body assemblies. Page v

Pressure ratings, material specifications. Page 11.02

Ports 1 & 2	ALUMINUM		DUCTILE IRON	
	Part Number	List Price	Part Number	List Price
.75 NPTF	ICD		ICD/S	
1.00 NPTF	ICE		ICE/S	
1.25 NPTF	ICF		ICF/S	
SAE-12	ICL		ICL/S	
SAE-16	ICM		ICM/S	
SAE-20	ICN		ICN/S	
.75 BSPP	ICW		ICW/S	
1.00 BSPP	ICX		ICX/S	
1.25 BSPP	ICY		ICY/S	

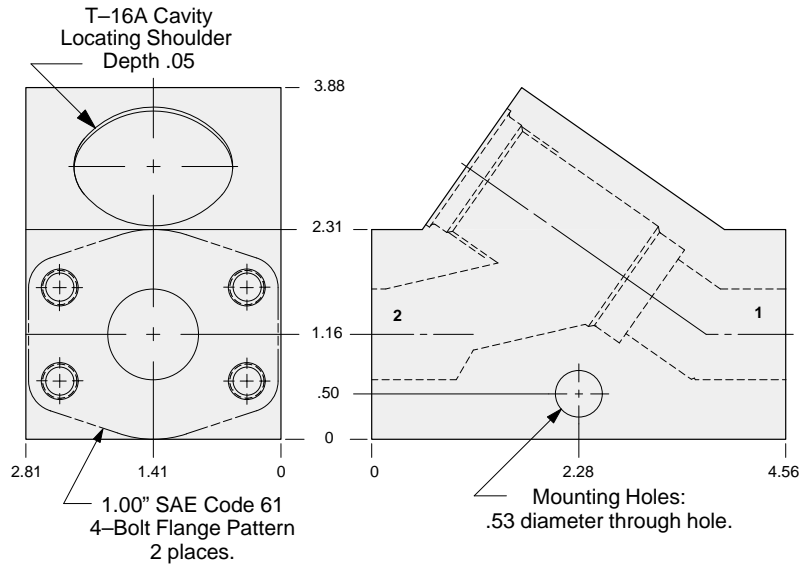
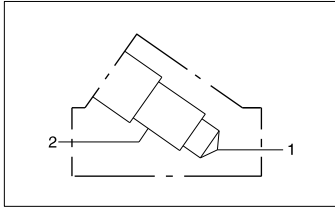


LINE MOUNT BODIES



- Aluminum rated to 3000 psi.
- Ductile Iron rated to 5000 psi.

Inline 1.00" SAE Code 61 flange port body.



TYPICAL CARTRIDGES USED WITH THIS BODY

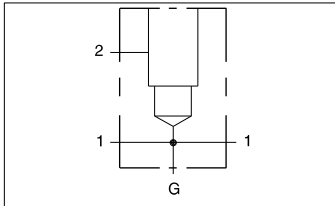
RPIC - ***	Page 1.07
RPIE - ***	Page 1.09
RDHA - ***	Page 1.11
RQIB - ***	Page 1.13
RPID - ***	Page 1.15
CXHA - ***	Page 5.09
CXGD - ***	Page 5.11
NFEC - ***	Page 5.13
CNGC - ***	Page 5.15
NCFB - ***	Page 5.17
NCFC - ***	Page 5.19
FXEA - ***	Page 5.21
FCEB - ***	Page 5.23
FDEA - ***	Page 5.25
FQGA - ***	Page 10.15

Instructions for ordering complete cartridge and body assemblies. Page v

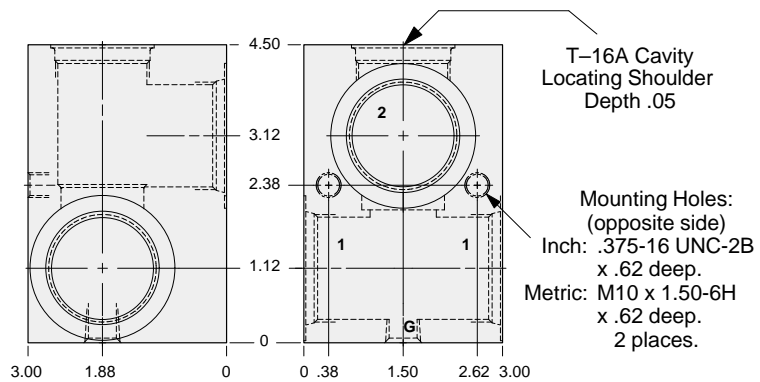
Pressure ratings, material specifications. Page 11.02

SAE Specifications Page 11.03

Mounting Hole Dimensions	ALUMINUM		DUCTILE IRON	
	Part Number	List Price	Part Number	List Price
Inch	ICP		ICP/S	
Metric	ICP/M		ICP/T	



Through port body with gage port.



TYPICAL CARTRIDGES USED WITH THIS BODY

RPIC - ***	Page 1.07
RPIE - ***	Page 1.09
RDHA - ***	Page 1.11
RQIB - ***	Page 1.13
RPID - ***	Page 1.15
NFEC - ***	Page 5.13
CNGC - ***	Page 5.15
NCFB - ***	Page 5.17
NCFC - ***	Page 5.19
FXEA - ***	Page 5.21
FCEB - ***	Page 5.23
FDEA - ***	Page 5.25

Instructions for ordering complete cartridge and body assemblies. Page v

Pressure ratings, material specifications. Page 11.02

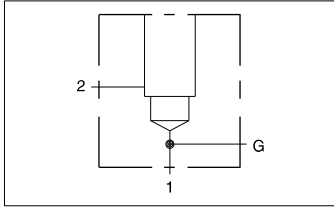
Mounting Hole Dimensions	Ports 1 & 2	Gage Port	ALUMINUM		DUCTILE IRON	
			Part Number	List Price	Part Number	List Price
Inch	.75 NPTF	.25 NPTF	IED		IED/S	
Inch	1.00 NPTF	.25 NPTF	IEE		IEE/S	
Inch	1.25 NPTF	.25 NPTF	IEF		IEF/S	
Inch	SAE-12	.25 NPTF	IEL		IEL/S	
Inch	SAE-16	.25 NPTF	IEM		IEM/S	
Inch	SAE-20	.25 NPTF	IEN		IEN/S	
Metric	.75 BSPP	.25 BSPP	IEW		IEW/S	
Metric	1.00 BSPP	.25 BSPP	IEX		IEX/S	
Metric	1.25 BSPP	.25 BSPP	IEY		IEY/S	



LINE MOUNT BODIES



- Aluminum rated to 3000 psi.
- Ductile Iron rated to 5000 psi.



90 degree 1.00" SAE Code 61 flange port body with gage port.

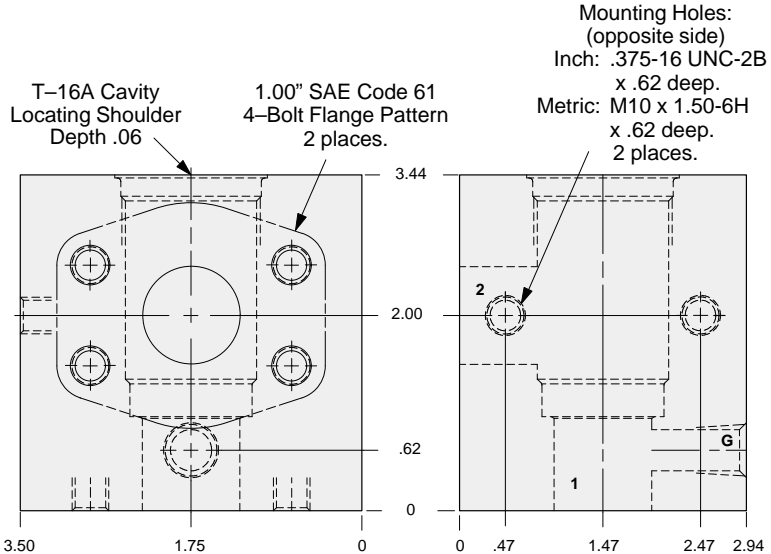
TYPICAL CARTRIDGES USED WITH THIS BODY

RPIC - ***	Page 1.07
RPIE - ***	Page 1.09
RDHA - ***	Page 1.11
RQIB - ***	Page 1.13
RPID - ***	Page 1.15
CXHA - ***	Page 5.09
CXGD - ***	Page 5.11
NFEC - ***	Page 5.13
CNGC - ***	Page 5.15
NCFB - ***	Page 5.17
NCFC - ***	Page 5.19
FXEA - ***	Page 5.21
FCEB - ***	Page 5.23
FDEA - ***	Page 5.25
FQGA - ***	Page 10.15

Instructions for ordering complete cartridge and body assemblies. Page v

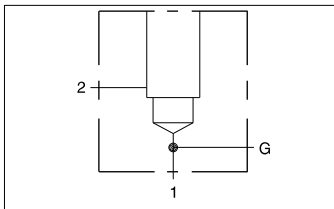
Pressure ratings, material specifications. Page 11.02

SAE Specifications Page 11.03



Mounting Hole Dimensions	Gage Port	ALUMINUM		DUCTILE IRON	
		Part Number	List Price	Part Number	List Price
Inch	.25 NPTF	IAP		IAP/S	
Metric	.25 BSPP	IAP/M		IAP/T	

S3
T16A



90 degree 1.00" SAE Code 62 flange port body with gage port.

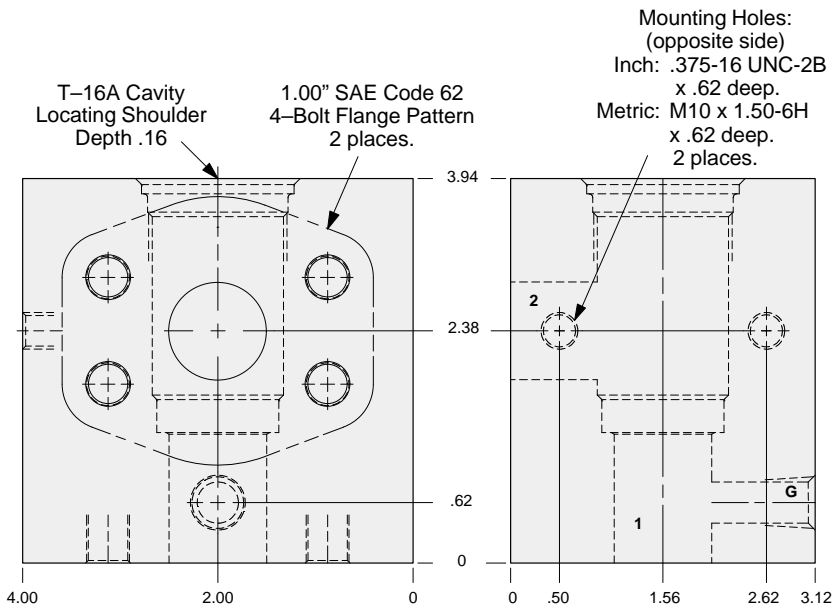
TYPICAL CARTRIDGES USED WITH THIS BODY

RPIC - ***	Page 1.07
RPIE - ***	Page 1.09
RDHA - ***	Page 1.11
RQIB - ***	Page 1.13
RPID - ***	Page 1.15
CXHA - ***	Page 5.09
CXGD - ***	Page 5.11
NFEC - ***	Page 5.13
CNGC - ***	Page 5.15
NCFB - ***	Page 5.17
NCFC - ***	Page 5.19
FXEA - ***	Page 5.21
FCEB - ***	Page 5.23
FDEA - ***	Page 5.25
FQGA - ***	Page 10.15

Instructions for ordering complete cartridge and body assemblies. Page v

Pressure ratings, material specifications. Page 11.02

SAE Specifications Page 11.03



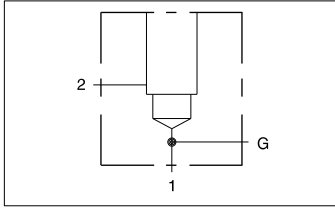
Mounting Hole Dimensions	Gage Port	ALUMINUM		DUCTILE IRON	
		Part Number	List Price	Part Number	List Price
Inch	.25 NPTF	IA4		IA4/S	
Metric	.25 BSPP	IA4/M		IA4/T	



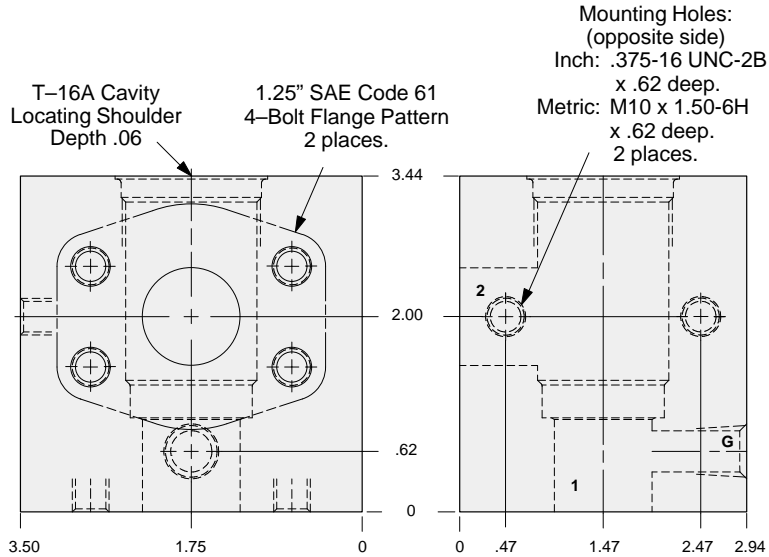
LINE MOUNT BODIES



- Aluminum rated to 3000 psi.
- Ductile Iron rated to 5000 psi.



90 degree 1.25" SAE Code 61 flange port body with gage port.



S3
T16A

TYPICAL CARTRIDGES USED WITH THIS BODY

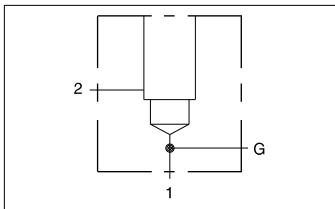
RPIC - ***	Page 1.07
RPIE - ***	Page 1.09
RDHA - ***	Page 1.11
RQIB - ***	Page 1.13
RPID - ***	Page 1.15
CXHA - ***	Page 5.09
CXGD - ***	Page 5.11
NFEC - ***	Page 5.13
CNGC - ***	Page 5.15
NCFB - ***	Page 5.17
NCFC - ***	Page 5.19
FXEA - ***	Page 5.21
FCEB - ***	Page 5.23
FDEA - ***	Page 5.25
FQGA - ***	Page 10.15

Instructions for ordering complete cartridge and body assemblies. Page v

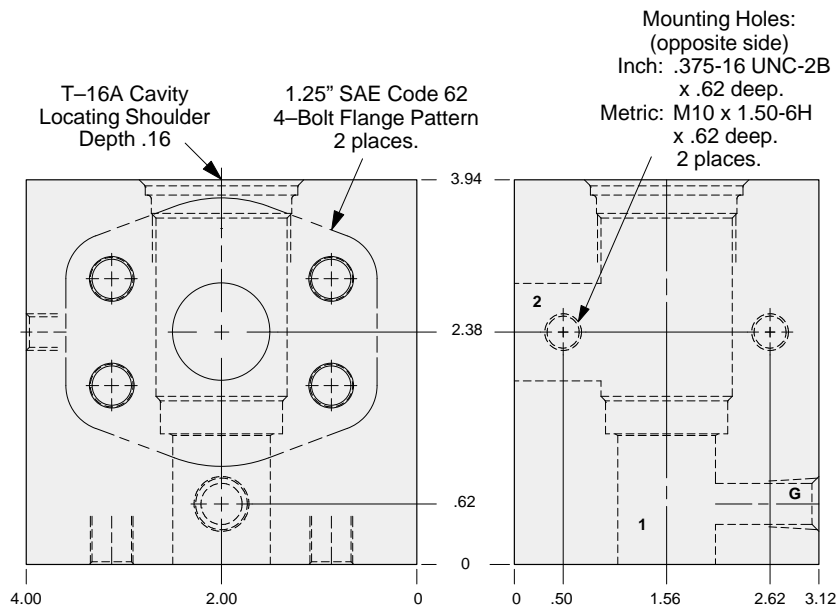
Pressure ratings, material specifications. Page 11.02

SAE Specifications Page 11.03

Mounting Hole Dimensions	Gage Port	ALUMINUM		DUCTILE IRON	
		Part Number	List Price	Part Number	List Price
Inch	.25 NPTF	IAQ		IAQ/S	
Metric	.25 BSPP	IAQ/M		IAQ/T	



90 degree 1.25" SAE Code 62 flange port body with gage port.



TYPICAL CARTRIDGES USED WITH THIS BODY

RPIC - ***	Page 1.07
RPIE - ***	Page 1.09
RDHA - ***	Page 1.11
RQIB - ***	Page 1.13
RPID - ***	Page 1.15
CXHA - ***	Page 5.09
CXGD - ***	Page 5.11
NFEC - ***	Page 5.13
CNGC - ***	Page 5.15
NCFB - ***	Page 5.17
NCFC - ***	Page 5.19
FXEA - ***	Page 5.21
FCEB - ***	Page 5.23
FDEA - ***	Page 5.25
FQGA - ***	Page 10.15

Instructions for ordering complete cartridge and body assemblies. Page v

Pressure ratings, material specifications. Page 11.02

SAE Specifications Page 11.03

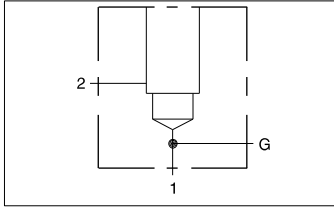
Mounting Hole Dimensions	Gage Port	ALUMINUM		DUCTILE IRON	
		Part Number	List Price	Part Number	List Price
Inch	.25 NPTF	IA5		IA5/S	
Metric	.25 BSPP	IA5/M		IA5/T	



LINE MOUNT BODIES



- Aluminum rated to 3000 psi.
- Ductile Iron rated to 5000 psi.



90 degree 1.50" SAE Code 61 flange port body with gage port.

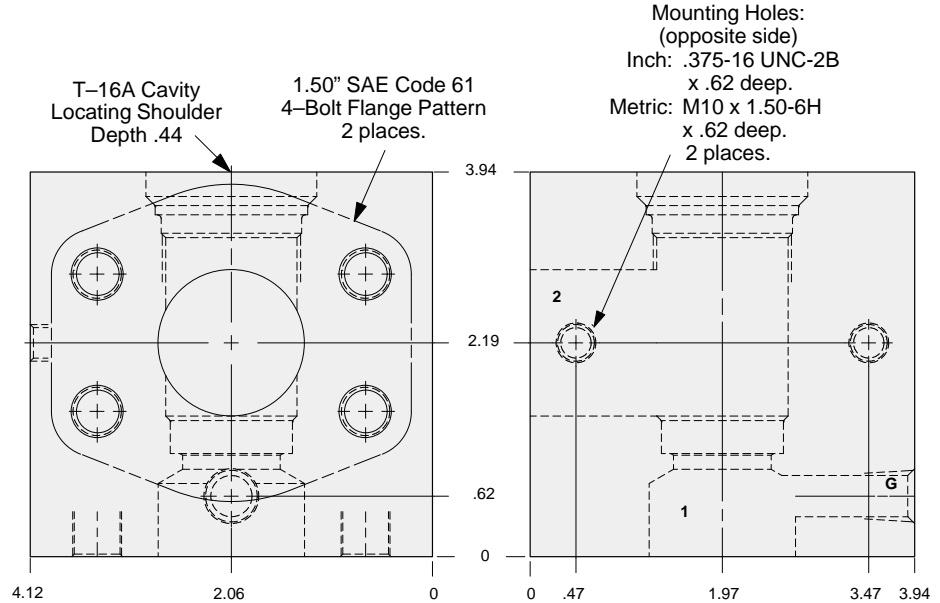
TYPICAL CARTRIDGES USED WITH THIS BODY

RPIC - ***	Page 1.07
RPIE - ***	Page 1.09
RDHA - ***	Page 1.11
RQIB - ***	Page 1.13
RPID - ***	Page 1.15
CXHA - ***	Page 5.09
CXGD - ***	Page 5.11
NFEC - ***	Page 5.13
CNGC - ***	Page 5.15
NCFB - ***	Page 5.17
NCFC - ***	Page 5.19
FXEA - ***	Page 5.21
FCEB - ***	Page 5.23
FDEA - ***	Page 5.25
FQGA - ***	Page 10.15

Instructions for ordering complete cartridge and body assemblies. Page v

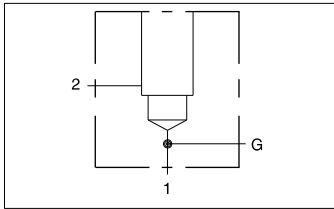
Pressure ratings, material specifications. Page 11.02

SAE Specifications Page 11.03



Mounting Hole Dimensions	Gage Port	ALUMINUM		DUCTILE IRON	
		Part Number	List Price	Part Number	List Price
Inch	.25 NPTF	IAR		IAR/S	
Metric	.25 BSPP	IAR/M		IAR/T	

S3 T16A



90 degree 1.50" SAE Code 62 flange port body with gage port.

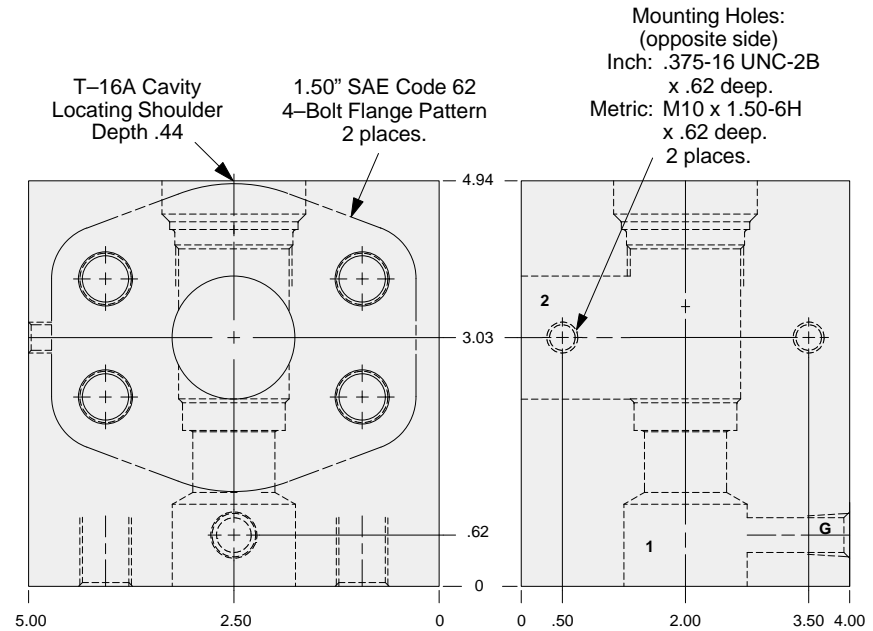
TYPICAL CARTRIDGES USED WITH THIS BODY

RPIC - ***	Page 1.07
RPIE - ***	Page 1.09
RDHA - ***	Page 1.11
RQIB - ***	Page 1.13
RPID - ***	Page 1.15
CXHA - ***	Page 5.09
CXGD - ***	Page 5.11
NFEC - ***	Page 5.13
CNGC - ***	Page 5.15
NCFB - ***	Page 5.19
NCFC - ***	Page 5.19
FXEA - ***	Page 5.21
FCEB - ***	Page 5.23
FDEA - ***	Page 5.25
FQGA - ***	Page 10.15

Instructions for ordering complete cartridge and body assemblies. Page v

Pressure ratings, material specifications. Page 11.02

SAE Specifications Page 11.03



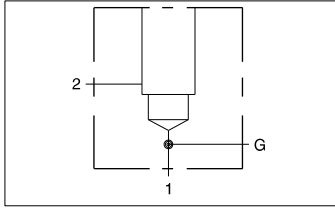
Mounting Hole Dimensions	Gage Port	ALUMINUM		DUCTILE IRON	
		Part Number	List Price	Part Number	List Price
Inch	.25 NPTF	IA6		IA6/S	
Metric	.25 BSPP	IA6/M		IA6/T	



LINE MOUNT BODIES



- Aluminum rated to 3000 psi.
- Ductile Iron rated to 5000 psi.



90 degree 2.00" SAE Code 61 flange port body with gage port.

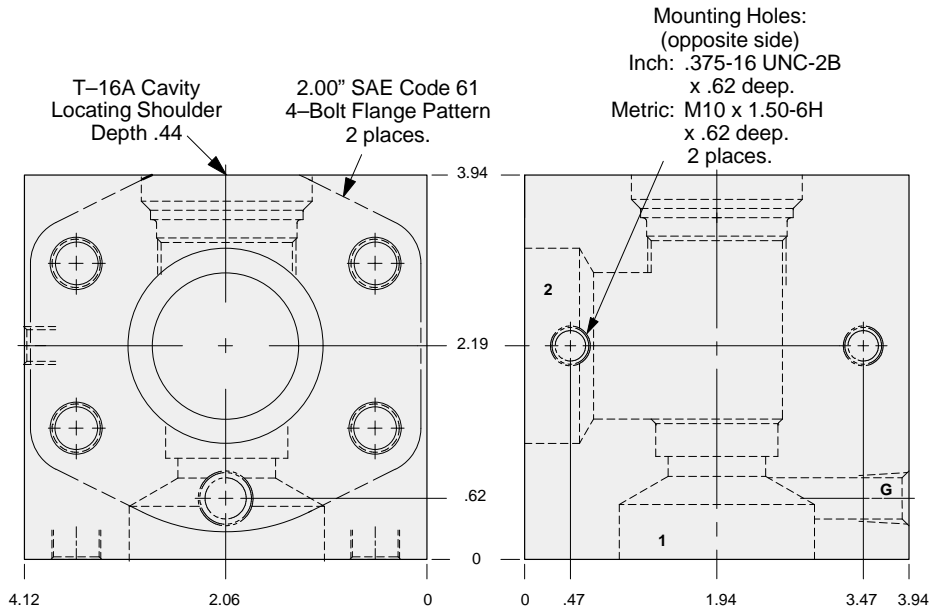
TYPICAL CARTRIDGES USED WITH THIS BODY

RPIC - ***	Page 1.07
RPIE - ***	Page 1.09
RDHA - ***	Page 1.11
RQIB - ***	Page 1.13
RPID - ***	Page 1.15
CXHA - ***	Page 5.09
CXGD - ***	Page 5.11
NFEC - ***	Page 5.13
CNGC - ***	Page 5.15
NCGB - ***	Page 5.17
NCFB - ***	Page 5.19
FXEA - ***	Page 5.21
FCEB - ***	Page 5.23
FDEA - ***	Page 5.25
FQGA - ***	Page 10.15

Instructions for ordering complete cartridge and body assemblies. Page v

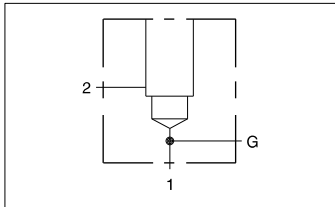
Pressure ratings, material specifications. Page 11.02

SAE Specifications Page 11.03



Mounting Hole Dimensions	Gage Port	ALUMINUM		DUCTILE IRON	
		Part Number	List Price	Part Number	List Price
Inch	.25 NPTF	IAS		IAS/S	
Metric	.25 BSPP	IAS/M		IAS/T	

S3 T16A



90 degree 2.00" SAE Code 62 flange port body with gage port.

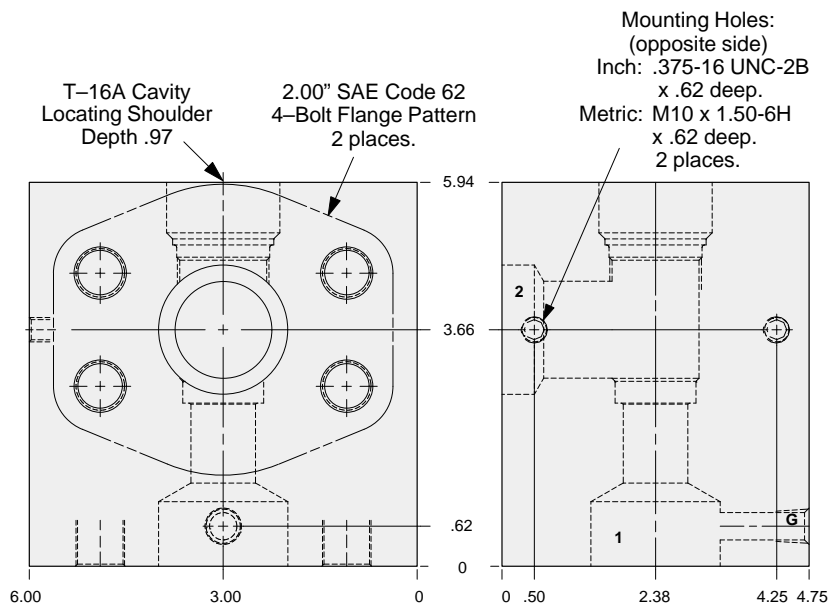
TYPICAL CARTRIDGES USED WITH THIS BODY

RPIC - ***	Page 1.07
RPIE - ***	Page 1.09
RDHA - ***	Page 1.11
RQIB - ***	Page 1.13
RPID - ***	Page 1.15
CXHA - ***	Page 5.09
CXGD - ***	Page 5.11
NFEC - ***	Page 5.13
CNGC - ***	Page 5.15
NCGB - ***	Page 5.17
NCFB - ***	Page 5.19
FXEA - ***	Page 5.21
FCEB - ***	Page 5.23
FDEA - ***	Page 5.25
FQGA - ***	Page 10.15

Instructions for ordering complete cartridge and body assemblies. Page v

Pressure ratings, material specifications. Page 11.02

SAE Specifications Page 11.03



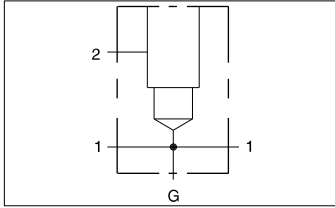
Mounting Hole Dimensions	Gage Port	ALUMINUM		DUCTILE IRON	
		Part Number	List Price	Part Number	List Price
Inch	.25 NPTF	IA8		IA8/S	
Metric	.25 BSPP	IA8/M		IA8/T	



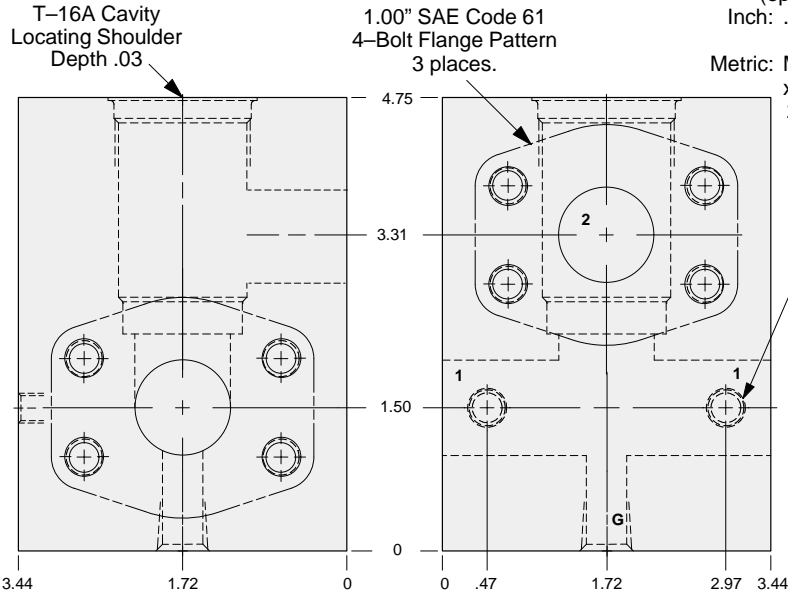
LINE MOUNT BODIES



- Aluminum rated to 3000 psi.
- Ductile Iron rated to 5000 psi.



Through port 1.00" SAE Code 61 flange port body with gage port.



Mounting Holes:
(opposite side)
Inch: .375-16 UNC-2B
x .75 deep.
Metric: M10 x 1.50-6H
x .75 deep.
2 places.

Mounting Hole Dimensions	Gage Port	ALUMINUM		DUCTILE IRON	
		Part Number	List Price	Part Number	List Price
Inch	.25 NPTF	IEP		IEP/S	
Metric	.25 BSPP	IEP/M		IEP/T	

S3
T16A

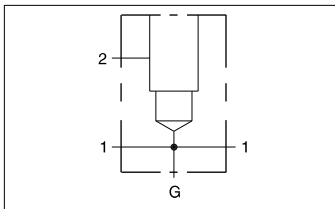
TYPICAL CARTRIDGES USED WITH THIS BODY

RPIC - ***	Page 1.07
RPIE - ***	Page 1.09
RDHA - ***	Page 1.11
RQIB - ***	Page 1.13
RPID - ***	Page 1.15
NFEC - ***	Page 5.13
CNGC - ***	Page 5.15
NCFB - ***	Page 5.17
NCFC - ***	Page 5.19
FXEA - ***	Page 5.21
FCEB - ***	Page 5.23
FDEA - ***	Page 5.25

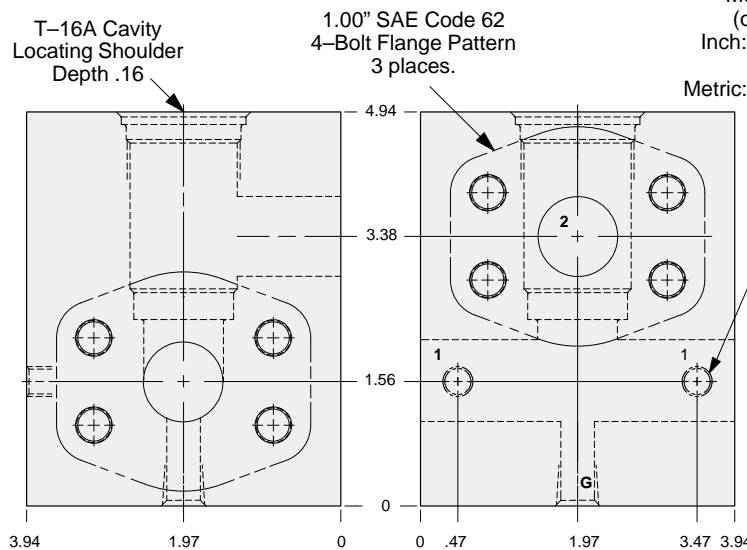
Instructions for ordering complete cartridge and body assemblies. Page v

Pressure ratings, material specifications. Page 11.02

SAE Specifications Page 11.03



Through port 1.00" SAE Code 62 flange port body with gage port.



Mounting Holes:
(opposite side)
Inch: .375-16 UNC-2B
x .75 deep.
Metric: M10 x 1.50-6H
x .75 deep.
2 places.

Mounting Hole Dimensions	Gage Port	ALUMINUM		DUCTILE IRON	
		Part Number	List Price	Part Number	List Price
Inch	.25 NPTF	IE4		IE4/S	
Metric	.25 BSPP	IE4/M		IE4/T	

TYPICAL CARTRIDGES USED WITH THIS BODY

RPIC - ***	Page 1.07
RPIE - ***	Page 1.09
RDHA - ***	Page 1.11
RQIB - ***	Page 1.13
RPID - ***	Page 1.15
NFEC - ***	Page 5.13
CNGC - ***	Page 5.15
NCFB - ***	Page 5.17
NCFC - ***	Page 5.19
FXEA - ***	Page 5.21
FCEB - ***	Page 5.23
FDEA - ***	Page 5.25

Instructions for ordering complete cartridge and body assemblies. Page v

Pressure ratings, material specifications. Page 11.02

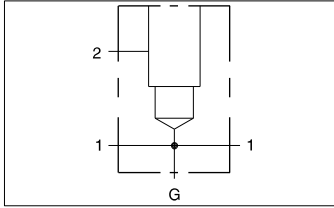
SAE Specifications Page 11.03



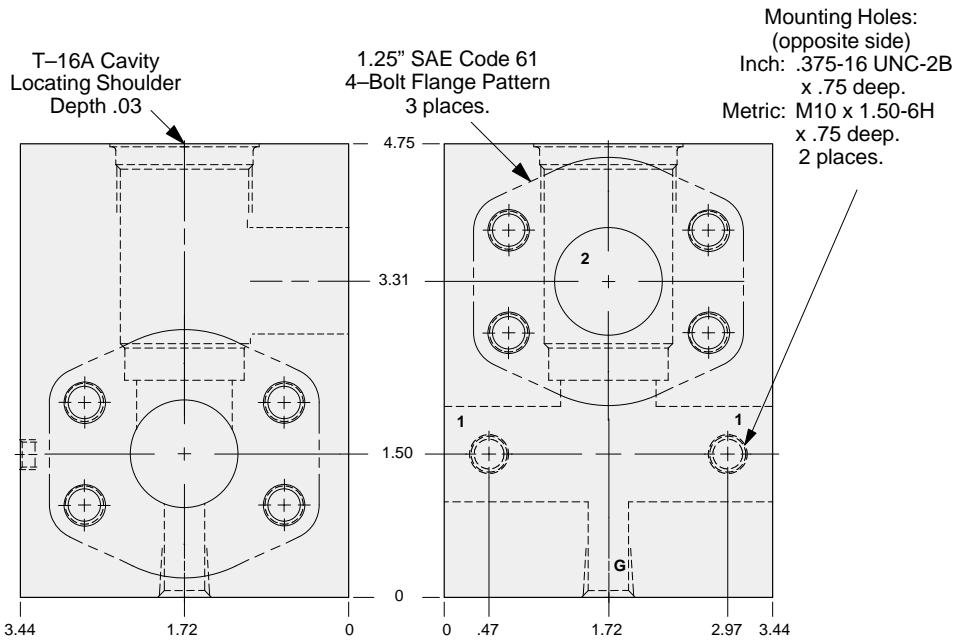
LINE MOUNT BODIES



- Aluminum rated to 3000 psi.
- Ductile Iron rated to 5000 psi.



Through port 1.25" SAE Code 61 flange port body with gage port.



TYPICAL CARTRIDGES USED WITH THIS BODY

RPIC - ***	Page 1.07
RPIE - ***	Page 1.09
RDHA - ***	Page 1.11
RQIB - ***	Page 1.13
RPID - ***	Page 1.15
NFEC - ***	Page 5.13
CNGC - ***	Page 5.15
NCFB - ***	Page 5.17
NCFC - ***	Page 5.19
FXEA - ***	Page 5.21
FCEB - ***	Page 5.23
FDEA - ***	Page 5.25

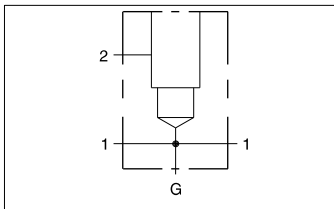
Instructions for ordering complete cartridge and body assemblies. Page v

Pressure ratings, material specifications. Page 11.02

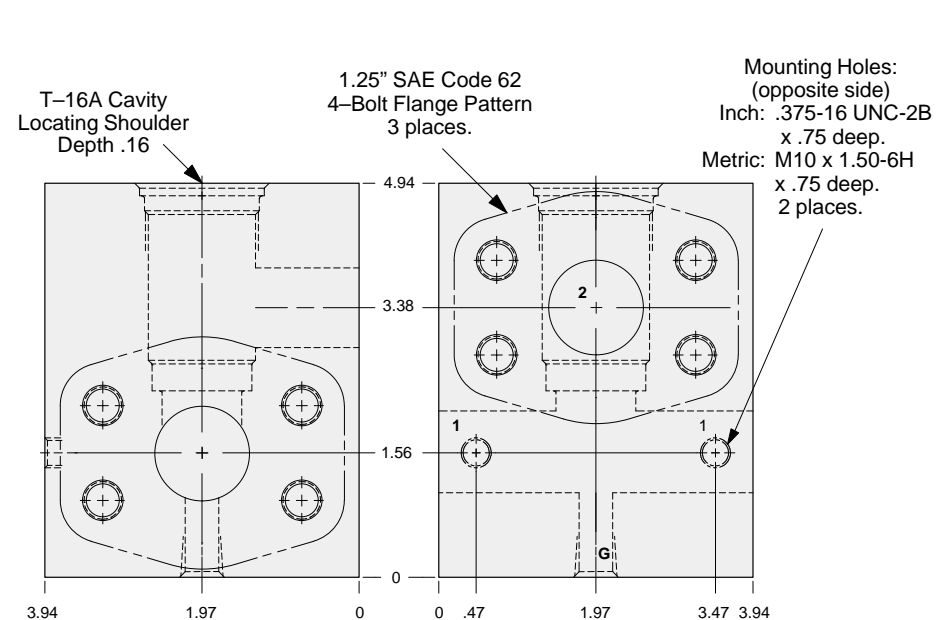
SAE Specifications Page 11.03

Mounting Hole Dimensions	Gage Port	ALUMINUM		DUCTILE IRON	
		Part Number	List Price	Part Number	List Price
Inch	.25 NPTF	IEQ		IEQ/S	
Metric	.25 BSPP	IEQ/M		IEQ/T	

S3
T16A



Through port 1.25" SAE Code 62 flange port body with gage port.



TYPICAL CARTRIDGES USED WITH THIS BODY

RPIC - ***	Page 1.07
RPIE - ***	Page 1.09
RDHA - ***	Page 1.11
RQIB - ***	Page 1.13
RPID - ***	Page 1.15
NFEC - ***	Page 5.13
CNGC - ***	Page 5.15
NCFB - ***	Page 5.17
NCFC - ***	Page 5.19
FXEA - ***	Page 5.21
FCEB - ***	Page 5.23
FDEA - ***	Page 5.25

Instructions for ordering complete cartridge and body assemblies. Page v

Pressure ratings, material specifications. Page 11.02

SAE Specifications Page 11.03

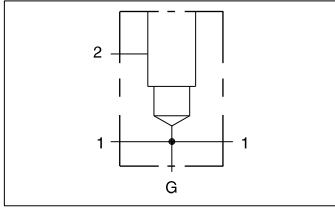
Mounting Hole Dimensions	Gage Port	ALUMINUM		DUCTILE IRON	
		Part Number	List Price	Part Number	List Price
Inch	.25 NPTF	IE5		IE5/S	
Metric	.25 BSPP	IE5/M		IE5/T	



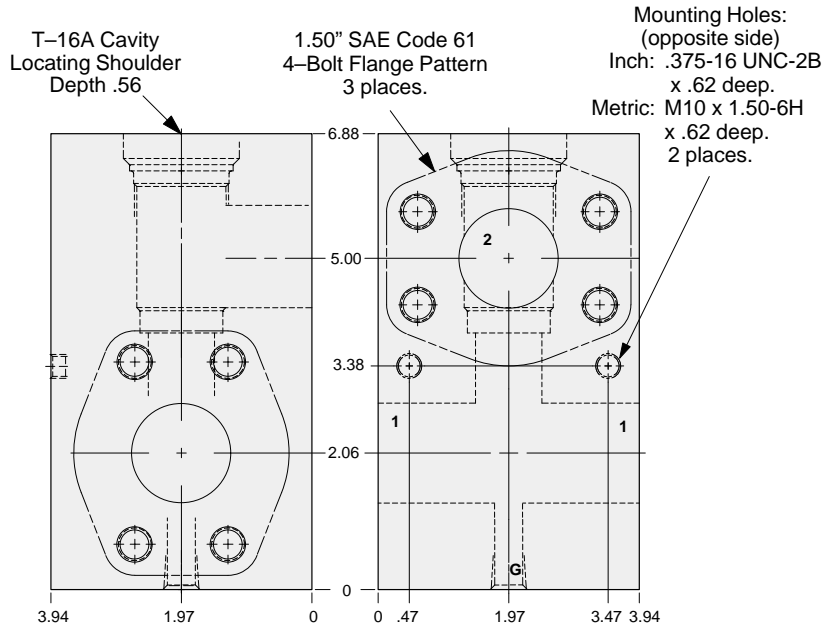
LINE MOUNT BODIES



- Aluminum rated to 3000 psi.
- Ductile Iron rated to 5000 psi.



Through port 1.50" SAE Code 61 flange port body with gage port.



Mounting Hole Dimensions	Gage Port	ALUMINUM		DUCTILE IRON	
		Part Number	List Price	Part Number	List Price
Inch	.25 NPTF	IER		IER/S	
Metric	.25 BSPP	IER/M		IER/T	

S3
T16A

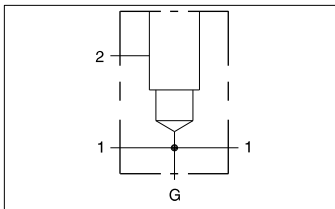
TYPICAL CARTRIDGES USED WITH THIS BODY

- RPIC - *** Page 1.07
- RPIE - *** Page 1.09
- RDHA - *** Page 1.11
- RQIB - *** Page 1.13
- RPID - *** Page 1.15
- NFEC - *** Page 5.13
- CNGC - *** Page 5.15
- NCFB - *** Page 5.17
- NCFC - *** Page 5.19
- FXEA - *** Page 5.21
- FCEB - *** Page 5.23
- FDEA - *** Page 5.25

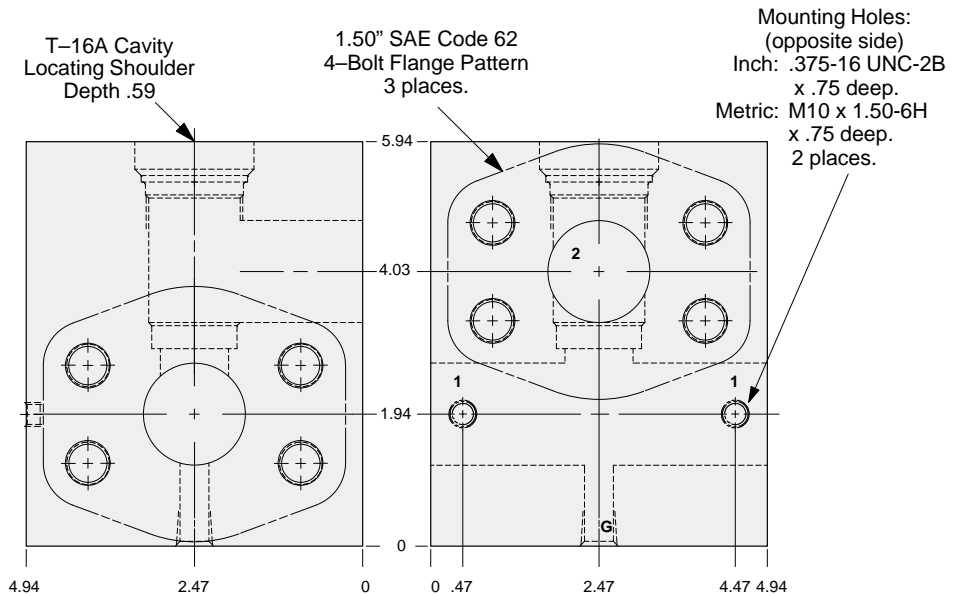
Instructions for ordering complete cartridge and body assemblies. Page v

Pressure ratings, material specifications. Page 11.02

SAE Specifications Page 11.03



Through port 1.50" SAE Code 62 flange port body with gage port.



Mounting Hole Dimensions	Gage Port	ALUMINUM		DUCTILE IRON	
		Part Number	List Price	Part Number	List Price
Inch	.25 NPTF	IE6		IE6/S	
Metric	.25 BSPP	IE6/M		IE6/T	

TYPICAL CARTRIDGES USED WITH THIS BODY

- RPIC - *** Page 1.07
- RPIE - *** Page 1.09
- RDHA - *** Page 1.11
- RQIB - *** Page 1.13
- RPID - *** Page 1.15
- NFEC - *** Page 5.13
- CNGC - *** Page 5.15
- NCFB - *** Page 5.17
- NCFC - *** Page 5.19
- FXEA - *** Page 5.21
- FCEB - *** Page 5.23
- FDEA - *** Page 5.25

Instructions for ordering complete cartridge and body assemblies. Page v

Pressure ratings, material specifications. Page 11.02

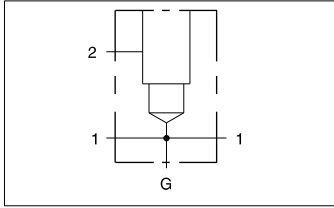
SAE Specifications Page 11.03



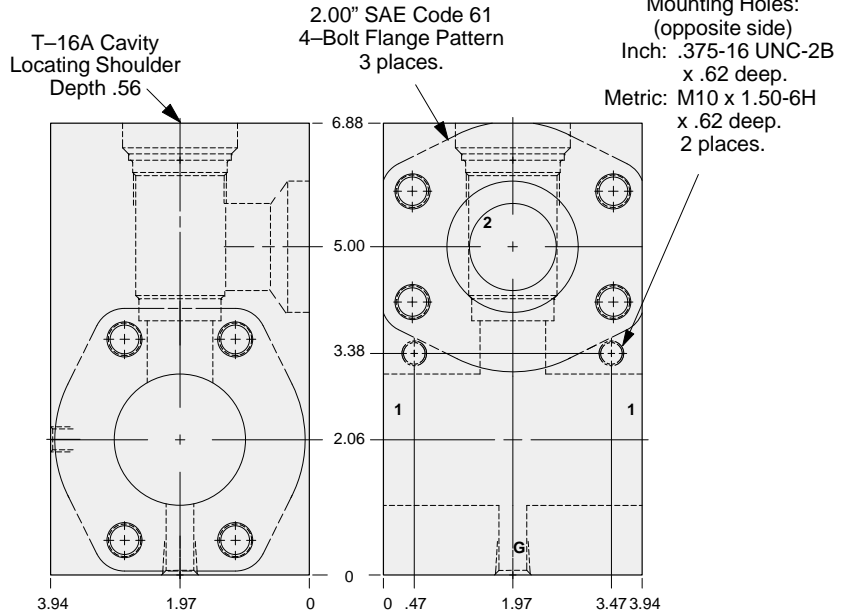
LINE MOUNT BODIES



- Aluminum rated to 3000 psi.
- Ductile Iron rated to 5000 psi.



Through port 2.00" SAE Code 61 flange port body with gage port.



TYPICAL CARTRIDGES USED WITH THIS BODY

RPIC - ***	Page 1.07
RPIE - ***	Page 1.09
RDHA - ***	Page 1.11
RQIB - ***	Page 1.13
RPID - ***	Page 1.15
NFEC - ***	Page 5.13
CNGC - ***	Page 5.15
NCFB - ***	Page 5.17
NCFC - ***	Page 5.19
FXEA - ***	Page 5.21
FCEB - ***	Page 5.23
FDEA - ***	Page 5.25

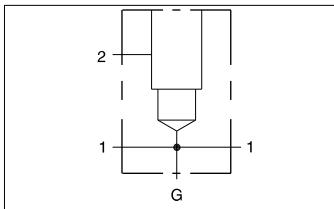
Instructions for ordering complete cartridge and body assemblies. Page v

Pressure ratings, material specifications. Page 11.02

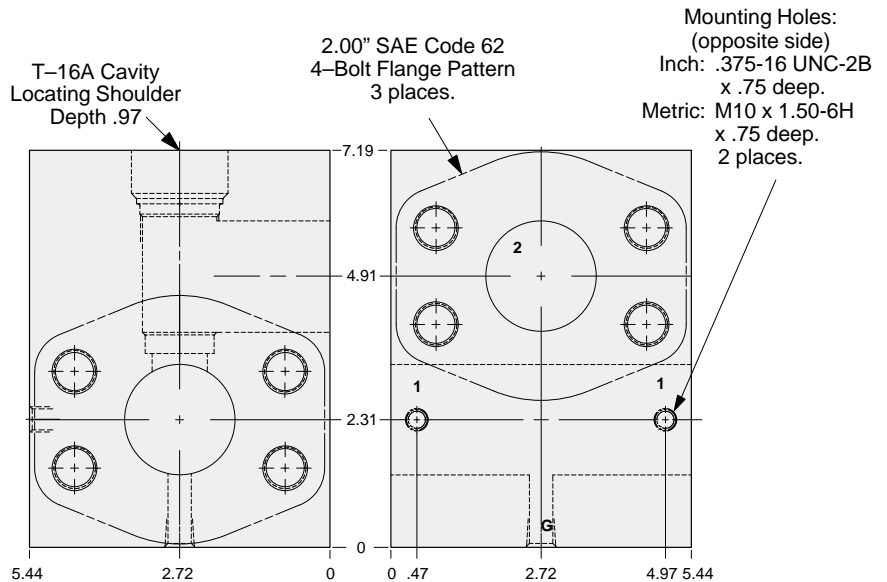
SAE Specifications Page 11.03

Mounting Hole Dimensions	Gage Port	ALUMINUM		DUCTILE IRON	
		Part Number	List Price	Part Number	List Price
Inch	.25 NPTF	IES		IES/S	
Metric	.25 BSPP	IES/M		IES/T	

S3
T16A



Through port 2.00" SAE Code 62 flange port body with gage port.



TYPICAL CARTRIDGES USED WITH THIS BODY

RPIC - ***	Page 1.07
RPIE - ***	Page 1.09
RDHA - ***	Page 1.11
RQIB - ***	Page 1.13
RPID - ***	Page 1.15
NFEC - ***	Page 5.13
CNGC - ***	Page 5.15
NCFB - ***	Page 5.17
NCFC - ***	Page 5.19
FXEA - ***	Page 5.21
FCEB - ***	Page 5.23
FDEA - ***	Page 5.25

Instructions for ordering complete cartridge and body assemblies. Page v

Pressure ratings, material specifications. Page 11.02

SAE Specifications Page 11.03

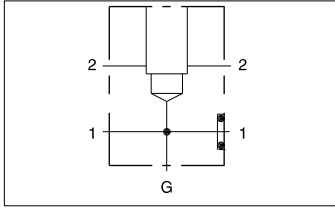
Mounting Hole Dimensions	Gage Port	ALUMINUM		DUCTILE IRON	
		Part Number	List Price	Part Number	List Price
Inch	.25 NPTF	IE8		IE8/S	
Metric	.25 BSPP	IE8/M		IE8/T	



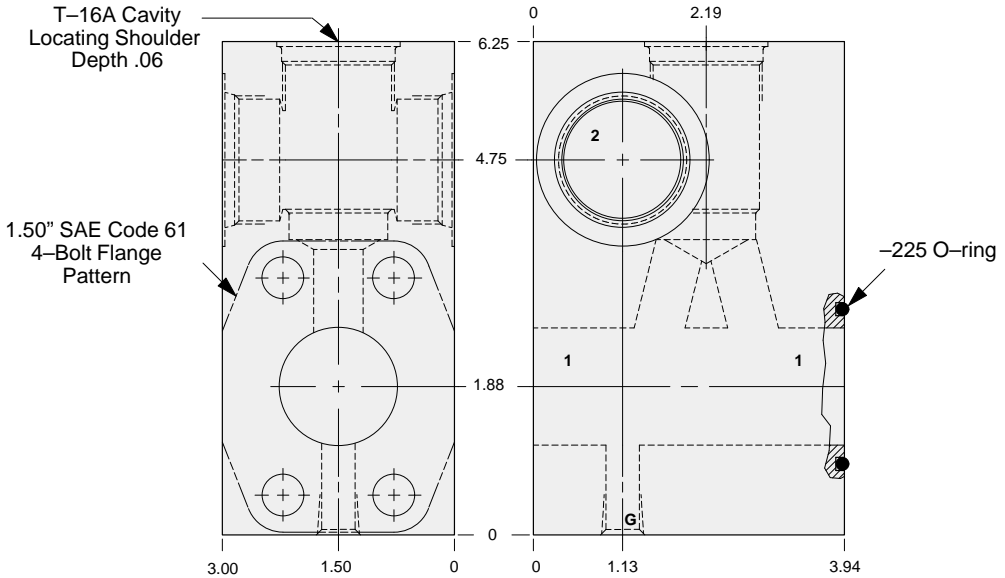
LINE MOUNT BODIES



- Aluminum rated to 3000 psi.
- Ductile Iron rated to 5000 psi.



Sandwich mount through port 1.50" SAE Code 61 body with gage port.



Mounting Hole Dimensions	Port 2	Gage Port	ALUMINUM		DUCTILE IRON	
			Part Number	List Price	Part Number	List Price
Inch	1.25 NPTF	.25 NPTF	ZQD		ZQD/S	
Inch	SAE-20	.25 NPTF	ZQC		ZQC/S	
Metric	1.25 BSPP	.25 BSPP	ZQB/M		ZQB/T	

S3
T16A

TYPICAL CARTRIDGES USED WITH THIS BODY

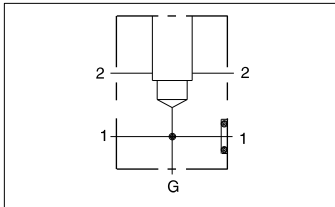
RPIC - ***	Page 1.07
RPIE - ***	Page 1.09
RDHA - ***	Page 1.11
RQIB - ***	Page 1.13
RPID - ***	Page 1.15

Cartridge seal type determines O-ring type.

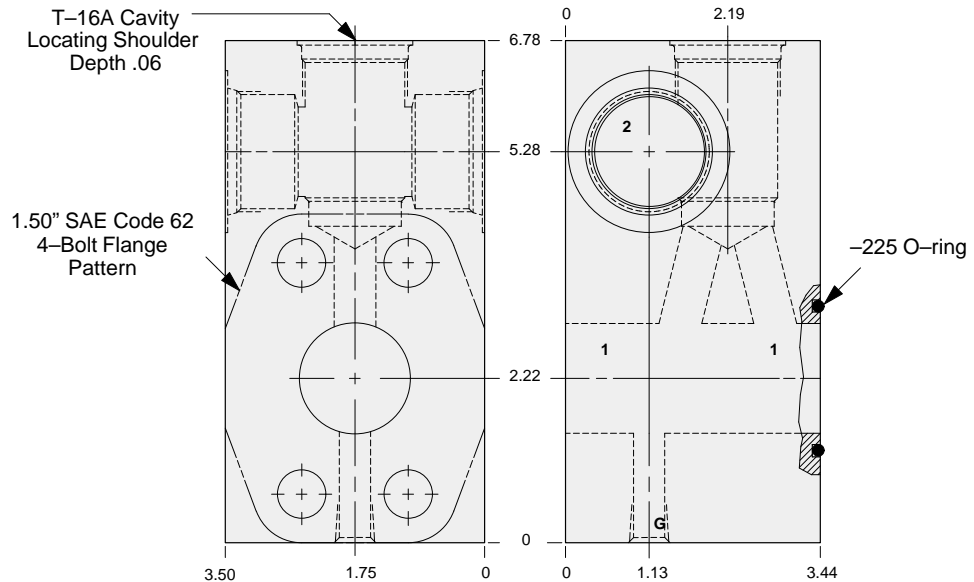
Instructions for ordering complete cartridge and body assemblies. Page v

Pressure ratings, material specifications. Page 11.02

SAE Specifications Page 11.03



Sandwich mount through port 1.50" SAE Code 62 body with gage port.



Mounting Hole Dimensions	Port 2	Gage Port	ALUMINUM		DUCTILE IRON	
			Part Number	List Price	Part Number	List Price
Inch	1.25 NPTF	.25 NPTF	ZFT		ZFT/S	
Inch	SAE-20	.25 NPTF	ZFV		ZFV/S	
Metric	1.25 BSPP	.25 BSPP	ZFW/M		ZFW/T	

TYPICAL CARTRIDGES USED WITH THIS BODY

RPIC - ***	Page 1.07
RPIE - ***	Page 1.09
RDHA - ***	Page 1.11
RQIB - ***	Page 1.13
RPID - ***	Page 1.15

Cartridge seal type determines O-ring type.

Instructions for ordering complete cartridge and body assemblies. Page v

Pressure ratings, material specifications. Page 11.02

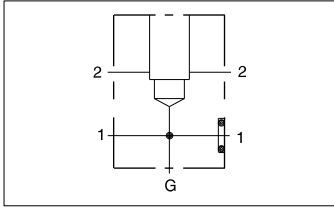
SAE Specifications Page 11.03



LINE MOUNT BODIES



- Aluminum rated to 3000 psi.
- Ductile Iron rated to 5000 psi.



Sandwich mount through flange port 1.50" SAE Code 61 body with gage port.

TYPICAL CARTRIDGES USED WITH THIS BODY

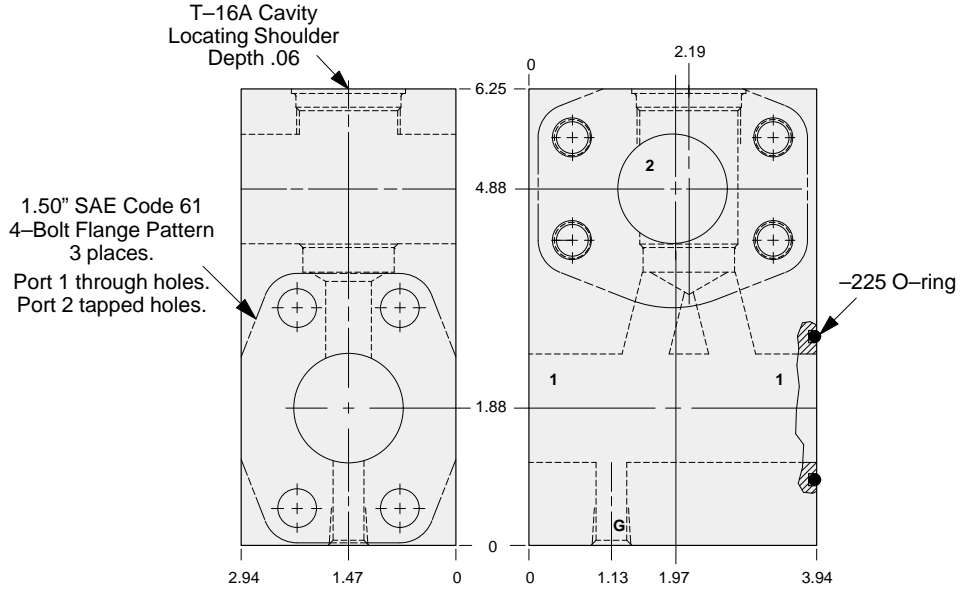
- RPIC - *** Page 1.07
- RPIE - *** Page 1.09
- RDHA - *** Page 1.11
- RQIB - *** Page 1.13
- RPID - *** Page 1.15

Cartridge seal type determines O-ring type.

Instructions for ordering complete cartridge and body assemblies. Page v

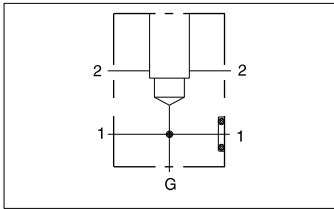
Pressure ratings, material specifications. Page 11.02

SAE Specifications Page 11.03



Mounting Hole Dimensions	Gage Port	ALUMINUM		DUCTILE IRON	
		Part Number	List Price	Part Number	List Price
Inch	.25 NPTF	ZQA		ZQA/S	
Metric	.25 BSPP	ZQA/M		ZQA/T	

S3
T16A



Sandwich mount through flange port 1.50" SAE Code 62 body with gage port.

TYPICAL CARTRIDGES USED WITH THIS BODY

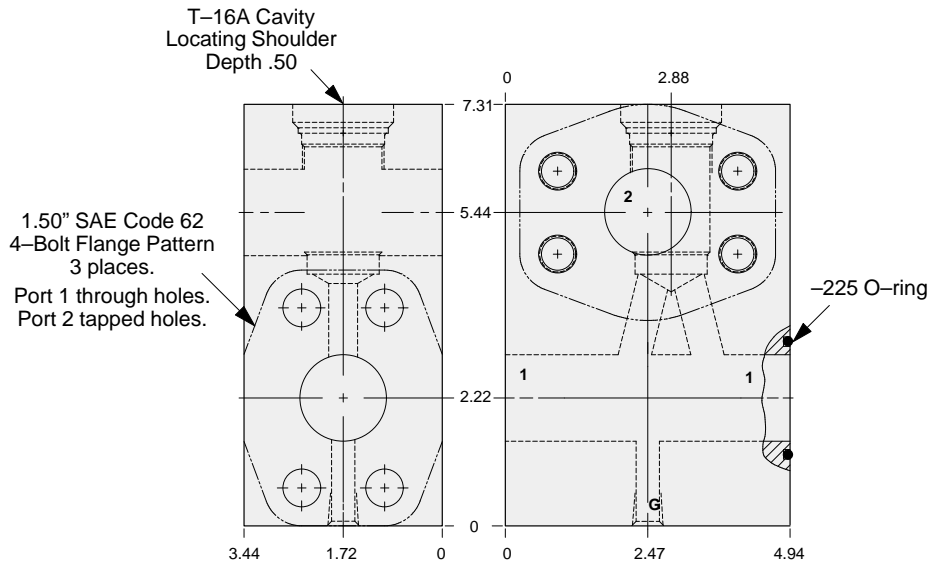
- RPIC - *** Page 1.07
- RPIE - *** Page 1.09
- RDHA - *** Page 1.11
- RQIB - *** Page 1.13
- RPID - *** Page 1.15

Cartridge seal type determines O-ring type.

Instructions for ordering complete cartridge and body assemblies. Page v

Pressure ratings, material specifications. Page 11.02

SAE Specifications Page 11.03



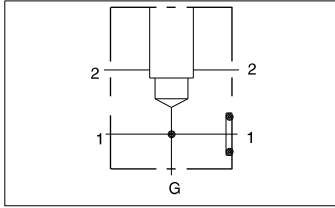
Mounting Hole Dimensions	Gage Port	ALUMINUM		DUCTILE IRON	
		Part Number	List Price	Part Number	List Price
Inch	.25 NPTF	ZBJ		ZBJ/S	
Metric	.25 BSPP	ZBJ/M		ZBJ/T	



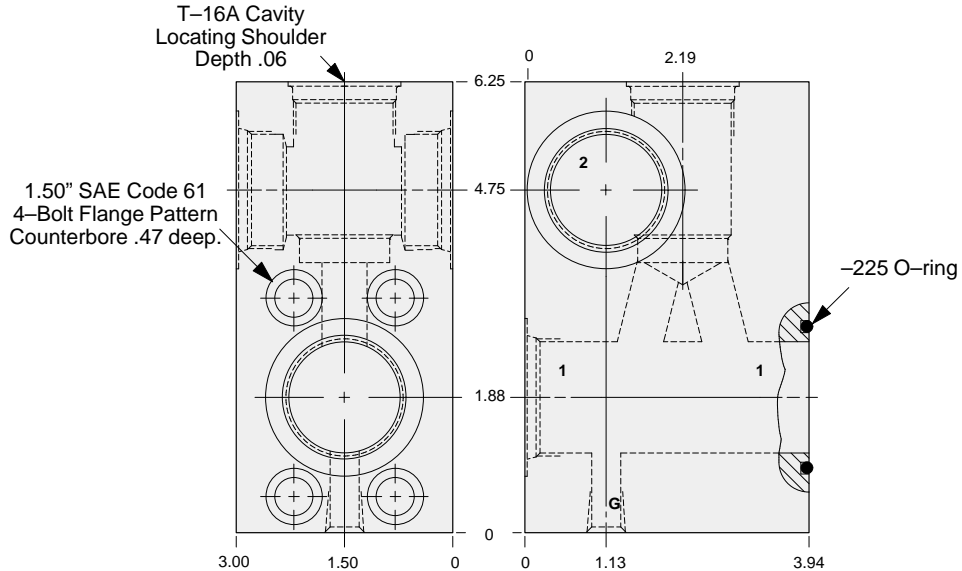
LINE MOUNT BODIES



- Aluminum rated to 3000 psi.
- Ductile Iron rated to 5000 psi.



Flange mount through port 1.50" SAE Code 61 body with threaded outlet and gage port.



Mounting Hole Dimensions	Ports 1 & 2	Gage Port	ALUMINUM		DUCTILE IRON	
			Part Number	List Price	Part Number	List Price
Inch	1.25 NPTF	.25 NPTF	ZBQ		ZBQ/S	
Inch	SAE-20	.25 NPTF	ZBP		ZBP/S	
Metric	1.25 BSPP	.25 BSPP	ZBN/M		ZBN/T	

S3
T16A

TYPICAL CARTRIDGES USED WITH THIS BODY

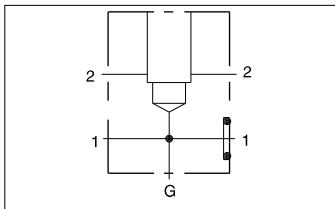
- RPIC - *** Page 1.07
 RPIE - *** Page 1.09
 RDHA - *** Page 1.11
 RQIB - *** Page 1.13

Cartridge seal type determines O-ring type.

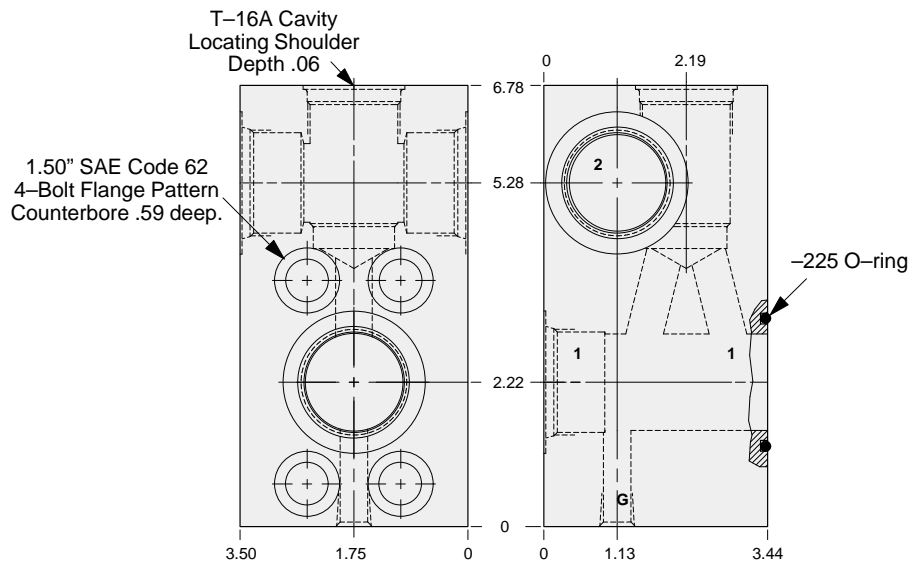
Instructions for ordering complete cartridge and body assemblies. Page v

Pressure ratings, material specifications. Page 11.02

SAE Specifications Page 11.03



Flange mount through port 1.50" SAE Code 62 body with threaded outlet and gage port.



Mounting Hole Dimensions	Ports 1 & 2	Gage Port	ALUMINUM		DUCTILE IRON	
			Part Number	List Price	Part Number	List Price
Inch	1.25 NPTF	.25 NPTF	ZBM		ZBM/S	
Inch	SAE-20	.25 NPTF	ZBL		ZBL/S	
Metric	1.25 BSPP	.25 BSPP	ZBK/M		ZBK/T	

TYPICAL CARTRIDGES USED WITH THIS BODY

- RPIC - *** Page 1.07
 RPIE - *** Page 1.09
 RDHA - *** Page 1.11
 RQIB - *** Page 1.13

Cartridge seal type determines O-ring type.

Instructions for ordering complete cartridge and body assemblies. Page v

Pressure ratings, material specifications. Page 11.02

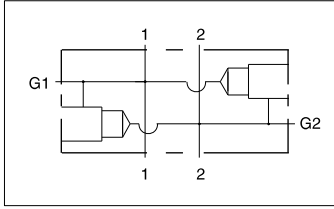
SAE Specifications Page 11.03



LINE MOUNT BODIES



- Aluminum rated to 3000 psi.
- Ductile Iron rated to 5000 psi.



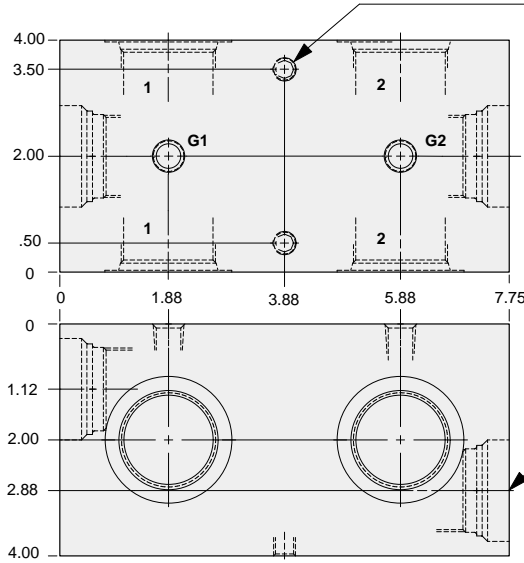
Two cavity body with gage ports for cross-port relief applications.

TYPICAL CARTRIDGES USED WITH THIS BODY

RPIC - ***	Page 1.07
RPIE - ***	Page 1.09
RDHA - ***	Page 1.11
RQIB - ***	Page 1.13

Instructions for ordering complete cartridge and body assemblies. Page v

Pressure ratings, material specifications. Page 11.02



Mounting Holes:
(opposite side)
Inch: .375-16 UNC-2B
x .62 deep.
Metric: M10 x 1.50-6H
x .62 deep.
2 places.

T-16A Cavity
Locating Shoulder
Depth .56
2 places.

S3
T16A

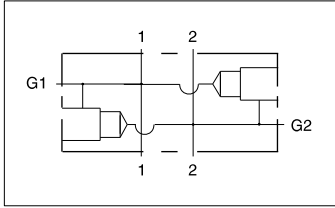
Mounting Hole Dimensions	Ports 1 & 2	Ports G1 & G2	ALUMINUM		DUCTILE IRON	
			Part Number	List Price	Part Number	List Price
Inch	1.25 NPTF	.25 NPTF	YIF		YIF/S	
Inch	SAE-20	.25 NPTF	YIN		YIN/S	
Metric	1.25 BSPP	.25 BSPP	YIY		YIY/S	



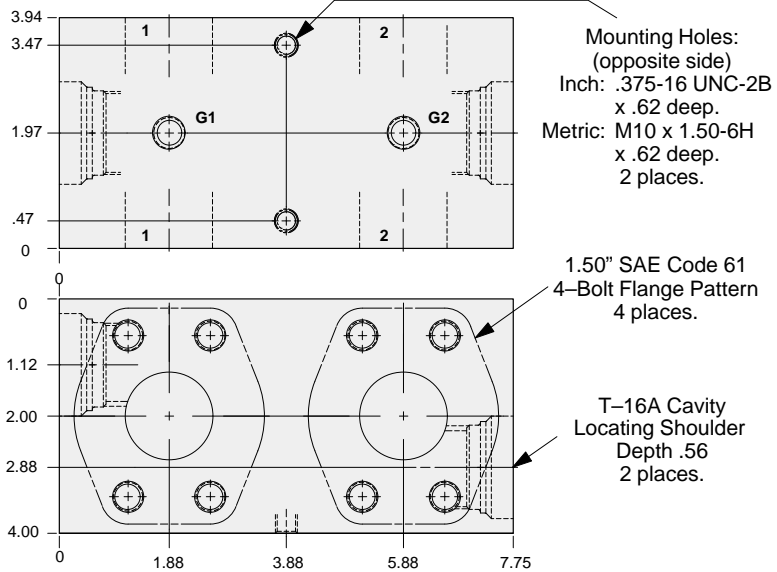
LINE MOUNT BODIES



- Aluminum rated to 3000 psi.
- Ductile Iron rated to 5000 psi.



Two cavity 1.50" SAE Code 61 flange port body with gage ports for cross-port relief applications.



Mounting Hole Dimensions	Gage Ports	ALUMINUM		DUCTILE IRON	
		Part Number	List Price	Part Number	List Price
Inch	.25 NPTF	Y1R		Y1R/S	
Metric	.25 BSPP	Y1R/M		Y1R/T	

S3
T16A

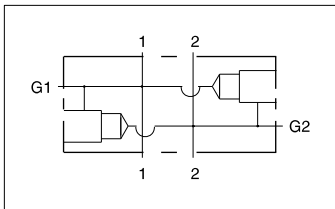
TYPICAL CARTRIDGES USED WITH THIS BODY

RPIC - ***	Page 1.07
RPIE - ***	Page 1.09
RDHA - ***	Page 1.11
RQIB - ***	Page 1.13

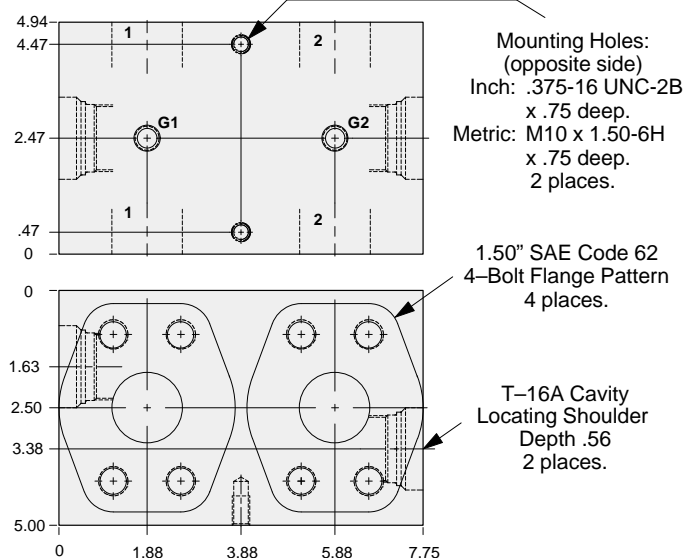
Instructions for ordering complete cartridge and body assemblies. Page v

Pressure ratings, material specifications. Page 11.02

SAE Specifications Page 11.03



Two cavity 1.50" SAE Code 62 flange port body with gage ports for cross-port relief applications.



Mounting Hole Dimensions	Gage Ports	ALUMINUM		DUCTILE IRON	
		Part Number	List Price	Part Number	List Price
Inch	.25 NPTF	Y16		Y16/S	
Metric	.25 BSPP	Y16/M		Y16/T	

TYPICAL CARTRIDGES USED WITH THIS BODY

RPIC - ***	Page 1.07
RPIE - ***	Page 1.09
RDHA - ***	Page 1.11
RQIB - ***	Page 1.13

Instructions for ordering complete cartridge and body assemblies. Page v

Pressure ratings, material specifications. Page 11.02

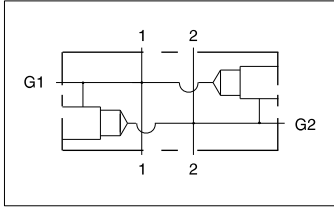
SAE Specifications Page 11.03



LINE MOUNT BODIES



- Aluminum rated to 3000 psi.
- Ductile Iron rated to 5000 psi.



Two cavity 2.00" SAE Code 61 flange port body with gage ports for cross-port relief applications.

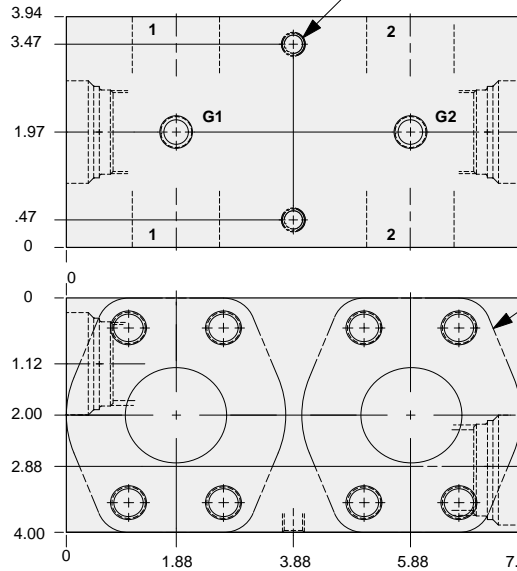
TYPICAL CARTRIDGES USED WITH THIS BODY

RPIC - ***	Page 1.07
RPIE - ***	Page 1.09
RDHA - ***	Page 1.11
RQIB - ***	Page 1.13

Instructions for ordering complete cartridge and body assemblies. Page v

Pressure ratings, material specifications. Page 11.02

SAE Specifications Page 11.03



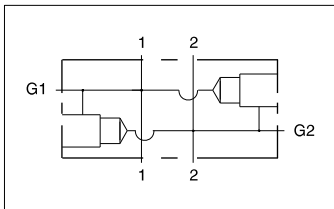
Mounting Holes:
(opposite side)
Inch: .375-16 UNC-2B
x .62 deep.
Metric: M10 x 1.50-6H
x .62 deep.
2 places.

2.00" SAE Code 61
4-Bolt Flange Pattern
4 places.

T-16A Cavity
Locating Shoulder
Depth .56
2 places.

Mounting Hole Dimensions	Gage Ports	ALUMINUM		DUCTILE IRON	
		Part Number	List Price	Part Number	List Price
Inch	.25 NPTF	YIS		YIS/S	
Metric	.25 BSPP	YIS/M		YIS/T	

S3
T16A



Two cavity 2.00" SAE Code 62 flange port body with gage ports for cross-port relief applications.

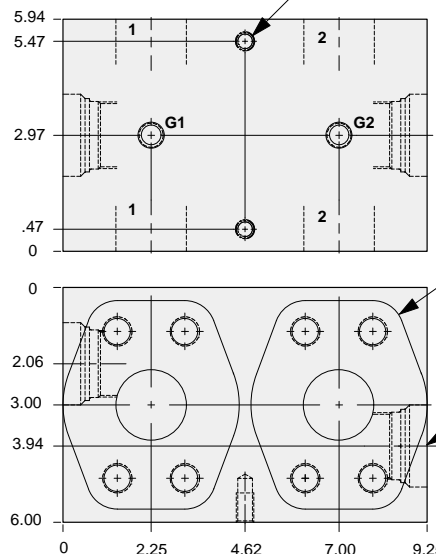
TYPICAL CARTRIDGES USED WITH THIS BODY

RPIC - ***	Page 1.07
RPIE - ***	Page 1.09
RDHA - ***	Page 1.11
RQIB - ***	Page 1.13

Instructions for ordering complete cartridge and body assemblies. Page v

Pressure ratings, material specifications. Page 11.02

SAE Specifications Page 11.03



Mounting Holes:
(opposite side)
Inch: .375-16 UNC-2B
x .75 deep.
Metric: M10 x 1.50-6H
x .75 deep.
2 places.

2.00" SAE Code 62
4-Bolt Flange Pattern
4 places.

T-16A Cavity
Locating Shoulder
Depth .97
2 places.

Mounting Hole Dimensions	Gage Ports	ALUMINUM		DUCTILE IRON	
		Part Number	List Price	Part Number	List Price
Inch	.25 NPTF	Y18		Y18/S	
Metric	.25 BSPP	Y18/M		Y18/T	

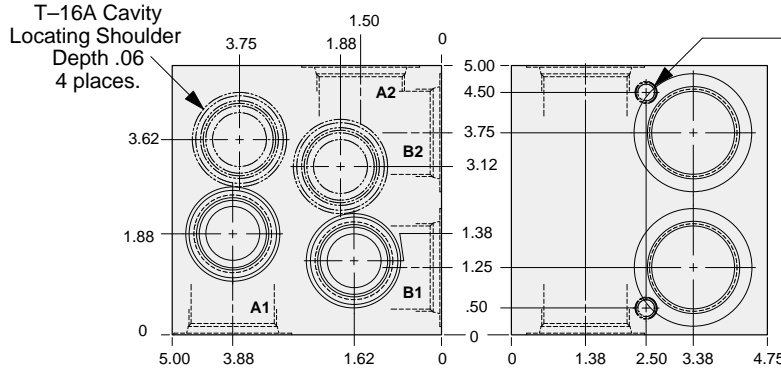
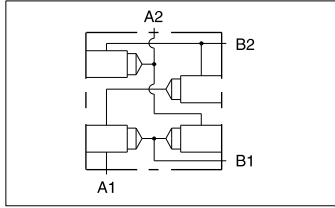


LINE MOUNT BODIES



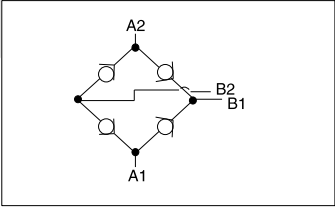
- Aluminum rated to 3000 psi.
- Ductile Iron rated to 5000 psi.

Rectifier body.



Mounting Holes:
(opposite side)
Inch: .375-16 UNC-2B
x .62 deep.
Metric: M10 x 1.50-6H
.62 deep.
2 places.

S3
T16A



TYPICAL CARTRIDGES USED WITH THIS BODY

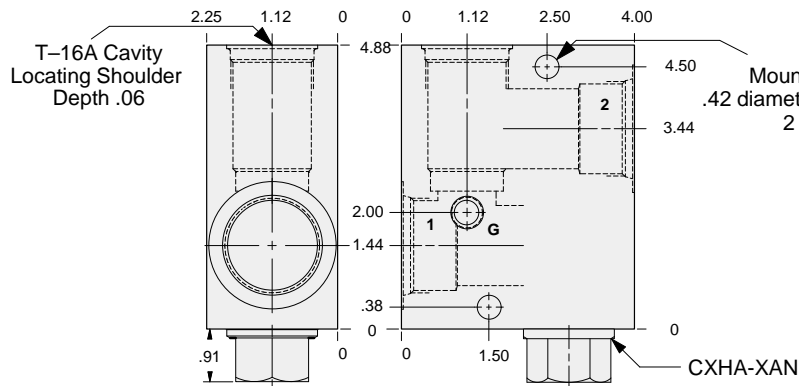
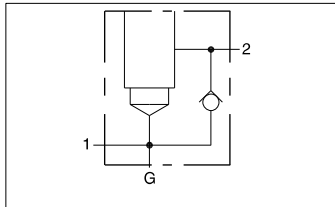
CXHA - *** Page 5.09

Instructions for ordering complete cartridge and body assemblies. Page v

Pressure ratings, material specifications. Page 11.02

Mounting Hole Dimensions	All Ports	ALUMINUM		DUCTILE IRON	
		Part Number	List Price	Part Number	List Price
Inch	.75 NPTF	YSC		YSC/S	
Inch	1.00 NPTF	YSD		YSD/S	
Inch	1.25 NPTF	YSE		YSE/S	
Inch	SAE-12	YSF		YSF/S	
Inch	SAE-16	YSG		YSG/S	
Inch	SAE-20	YSH		YSH/S	
Metric	.75 BSPP	YSI		YSI/S	
Metric	1.00 BSPP	YSJ		YSJ/S	
Metric	1.25 BSPP	YSK		YSK/S	

Body with reverse free flow check and gage port.



Mounting Holes:
.42 diameter through hole.
2 places.

TYPICAL CARTRIDGES USED WITH THIS BODY

- RPIC - *** Page 1.07
- RPIC - *** Page 1.09
- RDHA - *** Page 1.11
- RQIB - *** Page 1.13
- RPID - *** Page 1.15
- NFEC - *** Page 5.13
- FXEA - *** Page 5.21

Cartridge seal type determines check valve seal type.

Instructions for ordering complete cartridge and body assemblies. Page v

Pressure ratings, material specifications. Page 11.02

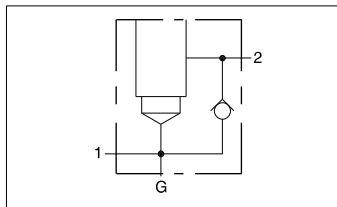
All Ports	Gage Port	ALUMINUM		DUCTILE IRON	
		Part Number	List Price	Part Number	List Price
.75 NPTF	.25 NPTF	IND		IND/S	
1.00 NPTF	.25 NPTF	INE		INE/S	
1.25 NPTF	.25 NPTF	INF		INF/S	
SAE-12	.25 NPTF	INL		INL/S	
SAE-16	.25 NPTF	INM		INM/S	
SAE-20	.25 NPTF	INN		INN/S	
.75 BSPP	.25 BSPP	INW		INW/S	
1.00 BSPP	.25 BSPP	INX		INX/S	
1.25 BSPP	.25 BSPP	INY		INY/S	



LINE MOUNT BODIES



- Aluminum rated to 3000 psi.
- Ductile Iron rated to 5000 psi.



1.00" SAE Code 61 flange port body with reverse free flow check and gage port.

TYPICAL CARTRIDGES USED WITH THIS BODY

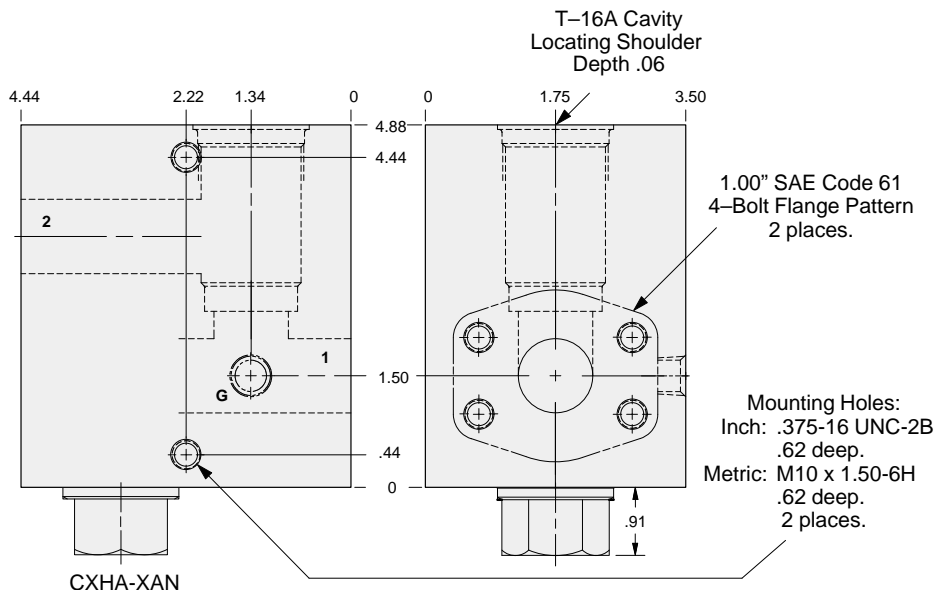
RPIC - ***	Page 1.07
RPIE - ***	Page 1.09
RDHA - ***	Page 1.11
RQIB - ***	Page 1.13
RPID - ***	Page 1.15
NFEC - ***	Page 5.13
FXEA - ***	Page 5.21

Cartridge seal type determines check valve seal type.

Instructions for ordering complete cartridge and body assemblies. Page v

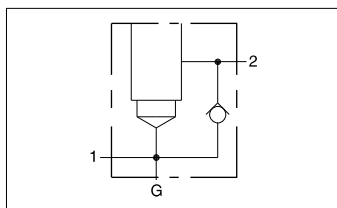
Pressure ratings, material specifications. Page 11.02

SAE Specifications Page 11.03



S3
T16A

Mounting Hole Dimensions	Gage Port	ALUMINUM		DUCTILE IRON	
		Part Number	List Price	Part Number	List Price
Inch	.25 NPTF	INP		INP/S	
Metric	.25 BSPP	INP/M		INP/T	



1.00" SAE Code 62 flange port body with reverse free flow check and gage port.

TYPICAL CARTRIDGES USED WITH THIS BODY

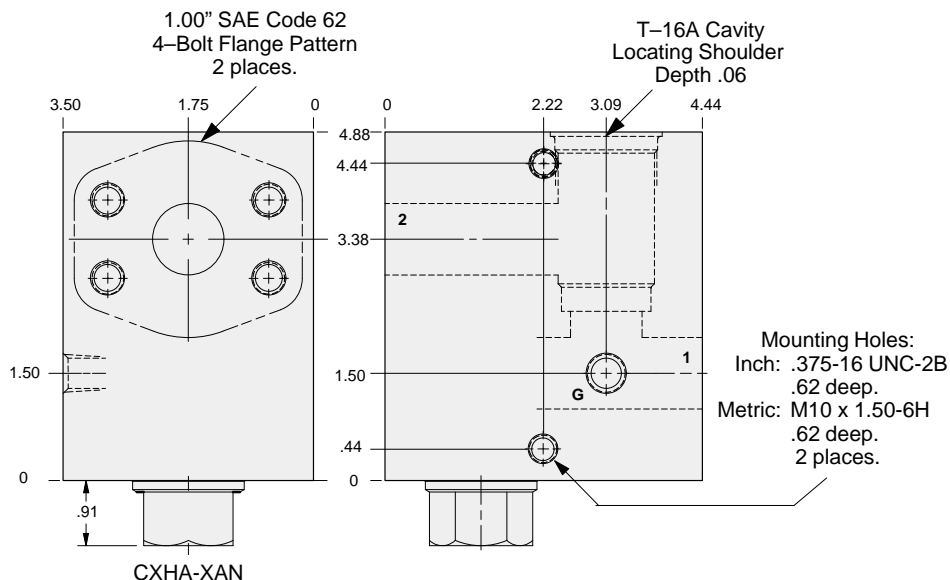
RPIC - ***	Page 1.07
RPIE - ***	Page 1.09
RDHA - ***	Page 1.11
RQIB - ***	Page 1.13
RPID - ***	Page 1.15
NFEC - ***	Page 5.13
FXEA - ***	Page 5.21

Cartridge seal type determines check valve seal type.

Instructions for ordering complete cartridge and body assemblies. Page v

Pressure ratings, material specifications. Page 11.02

SAE Specifications Page 11.03



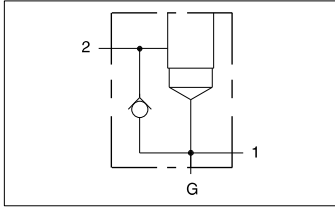
Mounting Hole Dimensions	Gage Port	ALUMINUM		DUCTILE IRON	
		Part Number	List Price	Part Number	List Price
Inch	.25 NPTF	IN4		IN4/S	
Metric	.25 BSPP	IN4/M		IN4/T	



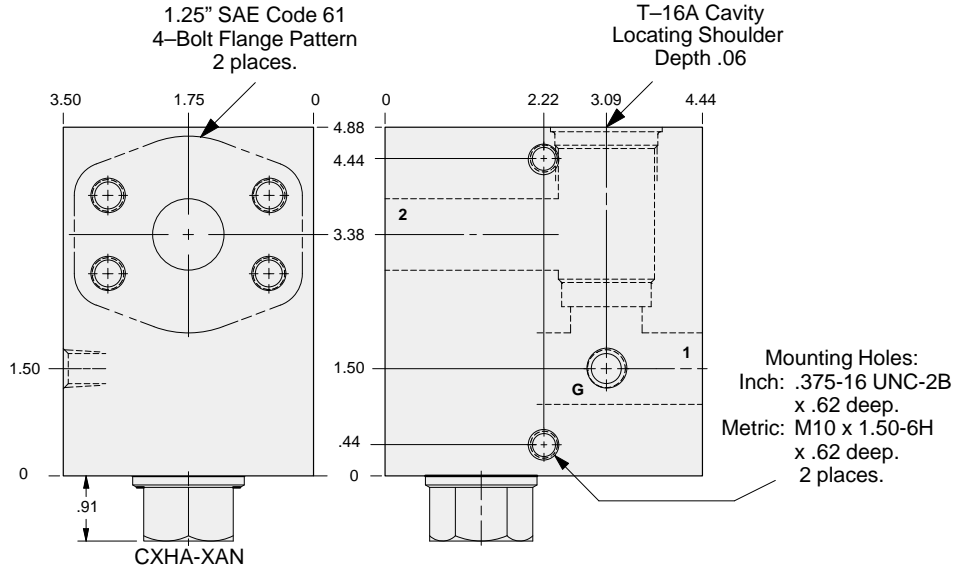
LINE MOUNT BODIES



- Aluminum rated to 3000 psi.
- Ductile Iron rated to 5000 psi.



1.25" SAE Code 61 flange port body with reverse free flow check and gage port.



Mounting Hole Dimensions	Gage Port	ALUMINUM		DUCTILE IRON	
		Part Number	List Price	Part Number	List Price
Inch	.25 NPTF	INQ		INQ/S	
Metric	.25 BSPP	INQ/M		INQ/T	

S3
T16A

TYPICAL CARTRIDGES USED WITH THIS BODY

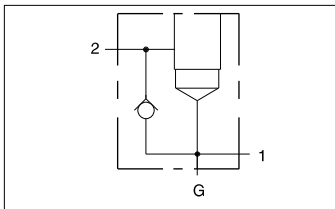
- RPIC - *** Page 1.07
- RPIE - *** Page 1.09
- RDHA - *** Page 1.11
- RQIB - *** Page 1.13
- RPID - *** Page 1.15
- NFEC - *** Page 5.13
- FXEA - *** Page 5.21

Cartridge seal type determines check valve seal type.

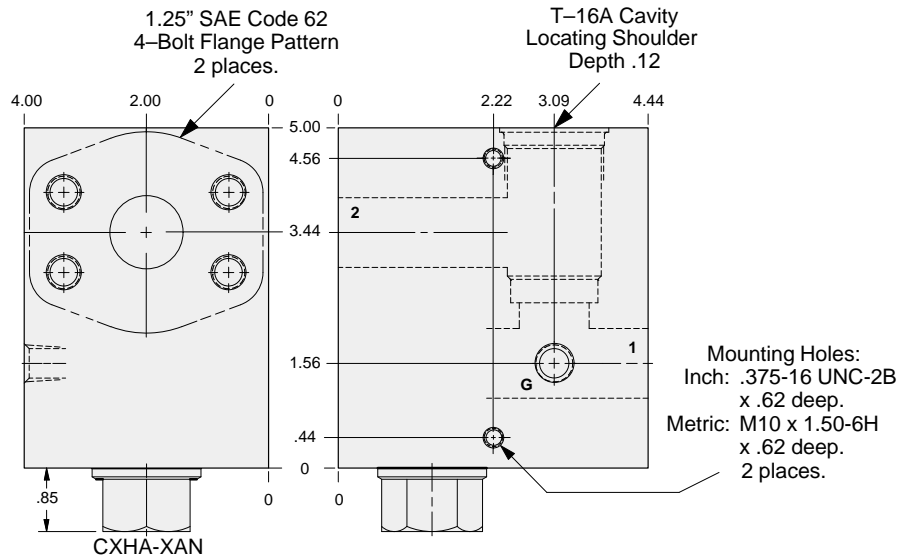
Instructions for ordering complete cartridge and body assemblies. Page v

Pressure ratings, material specifications. Page 11.02

SAE Specifications Page 11.03



1.25" SAE Code 62 flange port body with reverse free flow check and gage port.



Mounting Hole Dimensions	Gage Port	ALUMINUM		DUCTILE IRON	
		Part Number	List Price	Part Number	List Price
Inch	.25 NPTF	IN5		IN5/S	
Metric	.25 BSPP	IN5/M		IN5/T	

TYPICAL CARTRIDGES USED WITH THIS BODY

- RPIC - *** Page 1.07
- RPIE - *** Page 1.09
- RDHA - *** Page 1.11
- RQIB - *** Page 1.13
- RPID - *** Page 1.15
- NFEC - *** Page 5.13
- FXEA - *** Page 5.21

Cartridge seal type determines check valve seal type.

Instructions for ordering complete cartridge and body assemblies. Page v

Pressure ratings, material specifications. Page 11.02

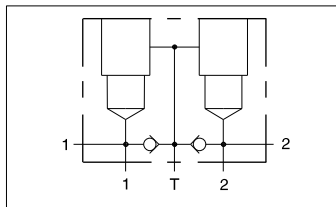
SAE Specifications Page 11.03



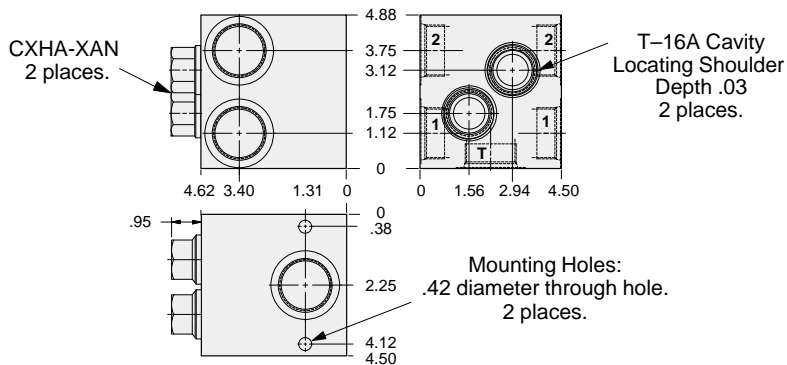
LINE MOUNT BODIES



- Aluminum rated to 3000 psi.
- Ductile Iron rated to 5000 psi.



Two cavity body with make-up checks for cross-port relief applications.



S3
T16A

TYPICAL CARTRIDGES USED WITH THIS BODY

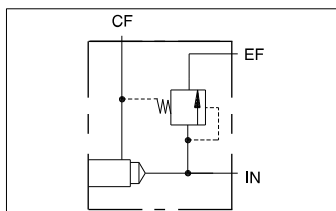
- RPIC - *** Page 1.07
 RPIE - *** Page 1.09
 RDHA - *** Page 1.11
 RQIB - *** Page 1.13
 RPID - *** Page 1.15

Cartridge seal type determines check valve seal type.

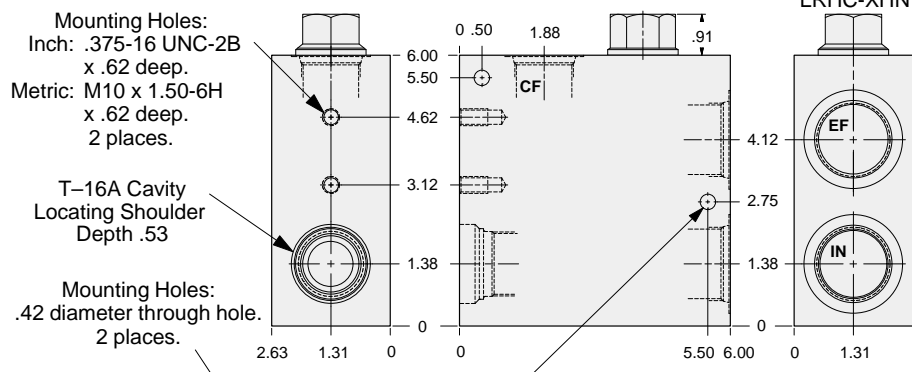
Instructions for ordering complete cartridge and body assemblies. Page v

Pressure ratings, material specifications. Page 11.02

All Ports	ALUMINUM		DUCTILE IRON	
	Part Number	List Price	Part Number	List Price
.75 NPTF	IMD		IMD/S	
1.00 NPTF	IME		IME/S	
1.25 NPTF	IMF		IMF/S	
SAE-12	IML		IML/S	
SAE-16	IMM		IMM/S	
SAE-20	IMN		IMN/S	
.75 BSPP	IMW		IMW/S	
1.00 BSPP	IMX		IMX/S	
1.25 BSPP	IMY		IMY/S	



Body with moldulating element for pressure-compensated flow control applications.



TYPICAL CARTRIDGES USED WITH THIS BODY

- NFEC - *** Page 5.13
 NCFB - *** Page 5.17
 NCFC - *** Page 5.19
 FXEA - *** Page 5.21
 FCEB - *** Page 5.23
 FDEA - *** Page 5.25

Cartridge seal type determines logic element seal type.

Instructions for ordering complete cartridge and body assemblies. Page v

Pressure ratings, material specifications. Page 11.02

Mounting Hole Dimensions	Port CF	Ports IN, EF	ALUMINUM		DUCTILE IRON	
			Part Number	List Price	Part Number	List Price
Inch	.50 NPTF	.75 NPTF	WNI		WNI/S	
Inch	.75 NPTF	1.00 NPTF	WNJ		WNJ/S	
Inch	1.00 NPTF	1.25 NPTF	WNK		WNK/S	
Inch	SAE-10	SAE-12	WNL		WNL/S	
Inch	SAE-12	SAE-16	WNM		WNM/S	
Inch	SAE-16	SAE-20	WNN		WNN/S	
Metric	.50 BSPP	.75 BSPP	WNO		WNO/S	
Metric	.75 BSPP	1.00 BSPP	WNP		WNP/S	
Metric	1.00 BSPP	1.25 BSPP	WNQ		WNQ/S	