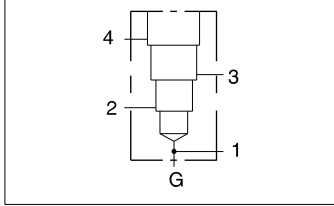




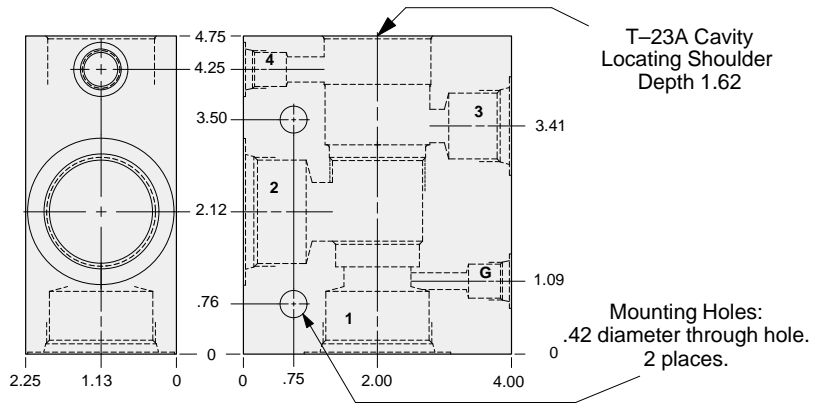
LINE MOUNT BODIES



- Aluminum rated to 3000 psi.
- Ductile Iron rated to 5000 psi.



90 degree body with gage port.



TYPICAL CARTRIDGES USED WITH THIS BODY

RVGD - ***	Page 1.21
PVHA - ***	Page 3.15
PVHB - ***	Page 3.17
CWGA - ***	Page 4.19
CWGG - ***	Page 4.21
CVGV - ***	Page 4.23
FVEA - ***	Page 6.05

S3
T23A

Instructions for ordering complete cartridge and body assemblies. Page v

Pressure ratings, material specifications. Page 11.02

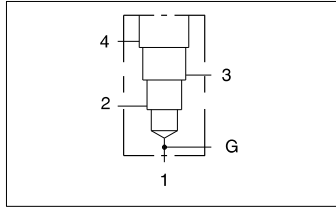
Ports 1 & 2	Port 3	Port 4	Gage Port	ALUMINUM		DUCTILE IRON	
				Part Number	List Price	Part Number	List Price
.75 NPTF	.75 NPTF	.25 NPTF	.25 NPTF	PAD		PAD/S	
1.00 NPTF	.75 NPTF	.25 NPTF	.25 NPTF	PAE		PAE/S	
1.25 NPTF	.75 NPTF	.25 NPTF	.25 NPTF	PAF		PAF/S	
SAE-12	SAE-12	SAE-6	.25 NPTF	PAL		PAL/S	
SAE-16	SAE-12	SAE-6	.25 NPTF	PAM		PAM/S	
SAE-20	SAE-12	SAE-6	.25 NPTF	PAN		PAN/S	
.75 BSPP	.75 BSPP	.25 BSPP	.25 BSPP	PAW		PAW/S	
1.00 BSPP	.75 BSPP	.25 BSPP	.25 BSPP	PAX		PAX/S	
1.25 BSPP	.75 BSPP	.25 BSPP	.25 BSPP	PAY		PAY/S	



LINE MOUNT BODIES



- Aluminum rated to 3000 psi.
- Ductile Iron rated to 5000 psi.

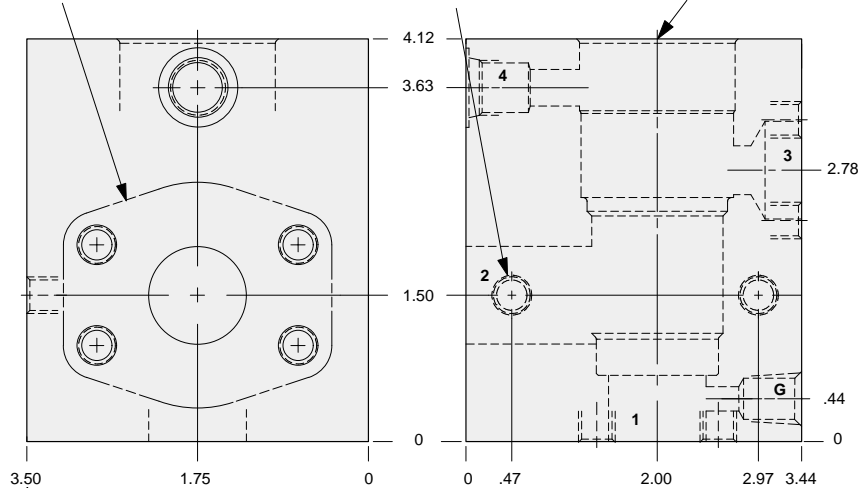


90 degree 1.00" SAE Code 61 flange port body with gage port.

1.00" SAE Code 61
4-Bolt Flange Pattern
3 places.

Mounting Holes:
(opposite side)
Inch: .375-16 UNC-2B x .75 deep.
Metric: M10 x 1.50-6H x .75 deep.
2 places.

T-23A Cavity
Locating Shoulder
Depth 1.63



TYPICAL CARTRIDGES USED WITH THIS BODY

RVGD - ***	Page 1.21
PVHA - ***	Page 3.15
PVHB - ***	Page 3.17
CWGA - ***	Page 4.19
CWGG - ***	Page 4.21
CVGV - ***	Page 4.23
FVEA - ***	Page 6.05

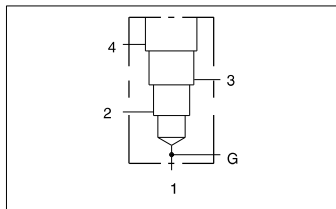
Instructions for ordering complete cartridge and body assemblies. Page v

Pressure ratings, material specifications. Page 11.02

SAE Specifications Page 11.03

Mounting Hole Dimensions	Port 4	Gage Port	ALUMINUM		DUCTILE IRON	
			Part Number	List Price	Part Number	List Price
Inch	SAE-6	.25 NPTF	PAP		PAP/S	
Metric	.25 BSPP	.25 BSPP	PAP/M		PAP/T	

S3
T23A

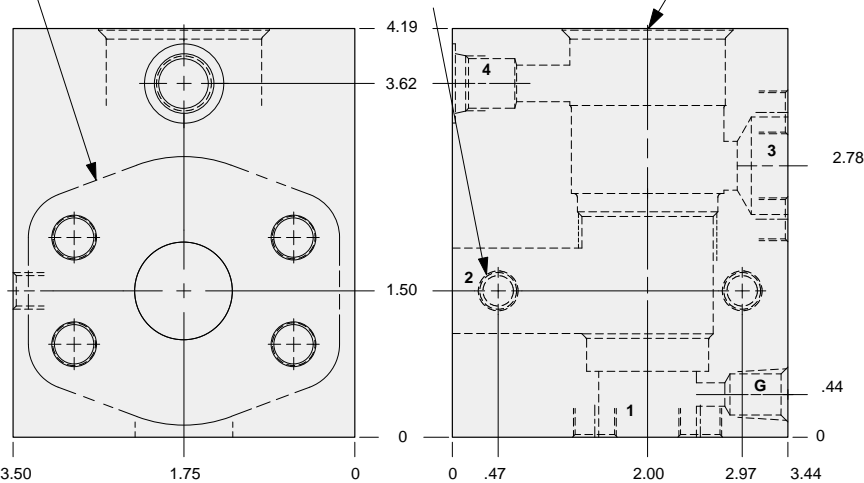


90 degree 1.00" SAE Code 62 flange port body with gage port.

1.00" SAE Code 62
4-Bolt Flange Pattern
3 places.

Mounting Holes:
(opposite side)
Inch: .375-16 UNC-2B x .75 deep.
Metric: M10 x 1.50-6H x .75 deep.
2 places.

T-23A Cavity
Locating Shoulder
Depth 1.69



TYPICAL CARTRIDGES USED WITH THIS BODY

RVGD - ***	Page 1.21
PVHA - ***	Page 3.15
PVHB - ***	Page 3.17
CWGA - ***	Page 4.19
CWGG - ***	Page 4.21
CVGV - ***	Page 4.23
FVEA - ***	Page 6.05

Instructions for ordering complete cartridge and body assemblies. Page v

Pressure ratings, material specifications. Page 11.02

SAE Specifications Page 11.03

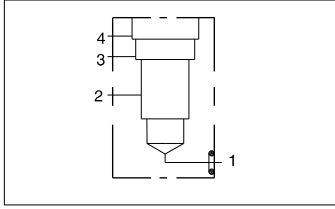
Mounting Hole Dimensions	Port 4	Gage Port	ALUMINUM		DUCTILE IRON	
			Part Number	List Price	Part Number	List Price
Inch	SAE-6	.25 NPTF	PA4		PA4/S	
Metric	.25 BSPP	.25 BSPP	PA4/M		PA4/T	



LINE MOUNT BODIES



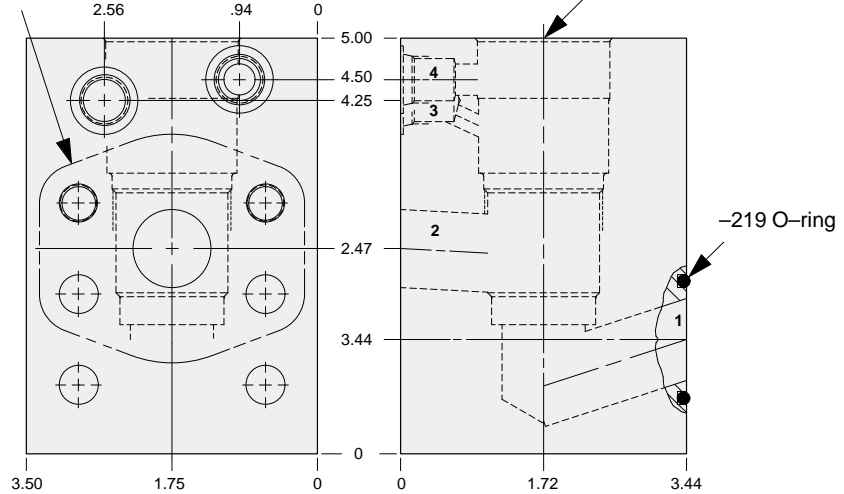
- Aluminum rated to 3000 psi.
- Ductile Iron rated to 5000 psi.



Direct mount 1.00" SAE Code 62 body.

1.00" SAE Code 62
4-Bolt Flange Pattern
2 places.
2 holes tapped
4 holes through

T-23A Cavity
Locating Shoulder
Depth 1.62



TYPICAL CARTRIDGES USED WITH THIS BODY

- RVGD - *** Page 1.21
CWGA - *** Page 4.19
CWGG - *** Page 4.21
CVGV - *** Page 4.23

S3 T23A Cartridge seal type determines O-ring type.

Instructions for ordering complete cartridge and body assemblies. Page v

Pressure ratings, material specifications. Page 11.02

SAE Specifications Page 11.03

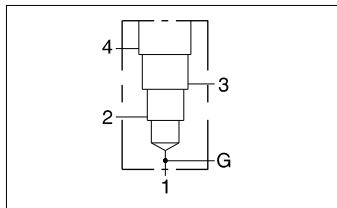
Mounting Hole Dimensions	Ports 3 & 4	ALUMINUM		DUCTILE IRON	
		Part Number	List Price	Part Number	List Price
Inch	SAE-6	WHA		WHA/S	
Metric	.25 BSPP	WHA/M		WHA/T	



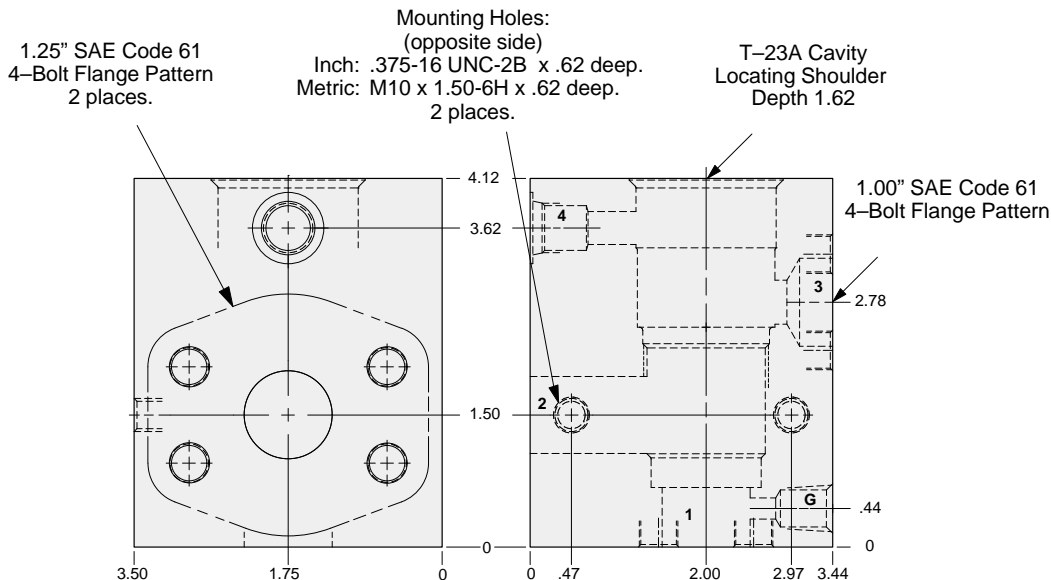
LINE MOUNT BODIES



- Aluminum rated to 3000 psi.
- Ductile Iron rated to 5000 psi.



90 degree 1.25" SAE Code 61 flange port body with gage port.



S3
T23A

TYPICAL CARTRIDGES USED WITH THIS BODY

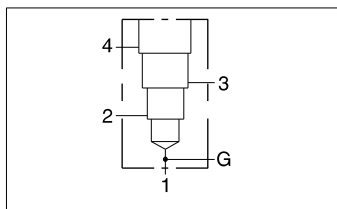
RVGD - ***	Page 1.21
PVHA - ***	Page 3.15
PVHB - ***	Page 3.17
CWGA - ***	Page 4.19
CWGG - ***	Page 4.21
CVGV - ***	Page 4.23
FVEA - ***	Page 6.05

Instructions for ordering complete cartridge and body assemblies. Page v

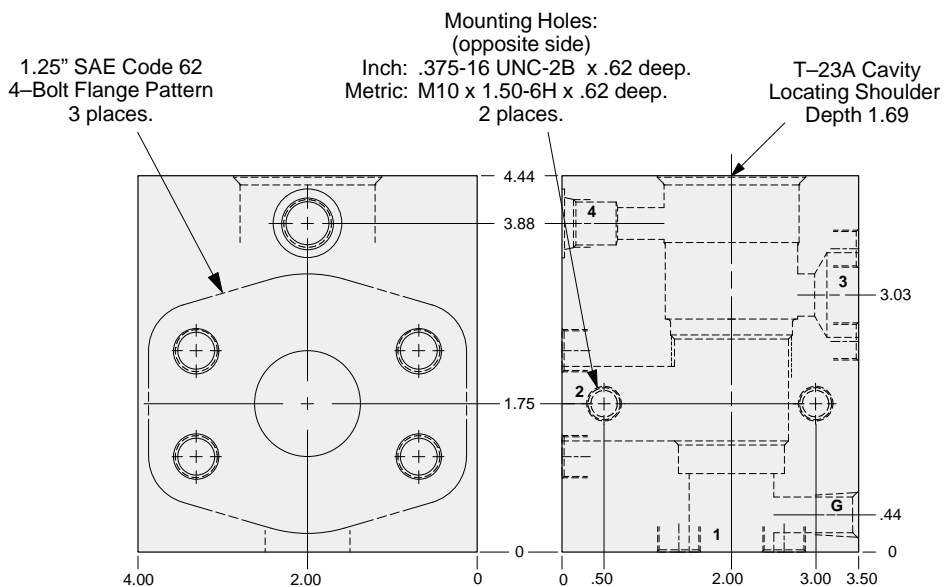
Pressure ratings, material specifications. Page 11.02

SAE Specifications Page 11.03

Mounting Hole Dimensions	Port 4	Gage Port	ALUMINUM		DUCTILE IRON	
			Part Number	List Price	Part Number	List Price
Inch	SAE-6	.25 NPTF	PAQ		PAQ/S	
Metric	.25 BSPP	.25 BSPP	PAQ/M		PAQ/T	



90 degree 1.25" SAE Code 62 flange port body with gage port.



TYPICAL CARTRIDGES USED WITH THIS BODY

RVGD - ***	Page 1.21
PVHA - ***	Page 3.15
PVHB - ***	Page 3.17
CWGA - ***	Page 4.19
CWGG - ***	Page 4.21
CVGV - ***	Page 4.23
FVEA - ***	Page 6.05

Instructions for ordering complete cartridge and body assemblies. Page v

Pressure ratings, material specifications. Page 11.02

SAE Specifications Page 11.03

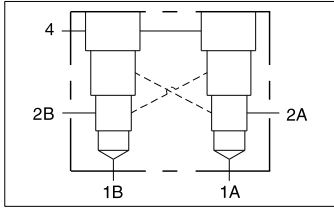
Mounting Hole Dimensions	Port 4	Gage Port	ALUMINUM		DUCTILE IRON	
			Part Number	List Price	Part Number	List Price
Inch	SAE-6	.25 NPTF	PA5		PA5/S	
Metric	.25 BSPP	.25 BSPP	PA5/M		PA5/T	



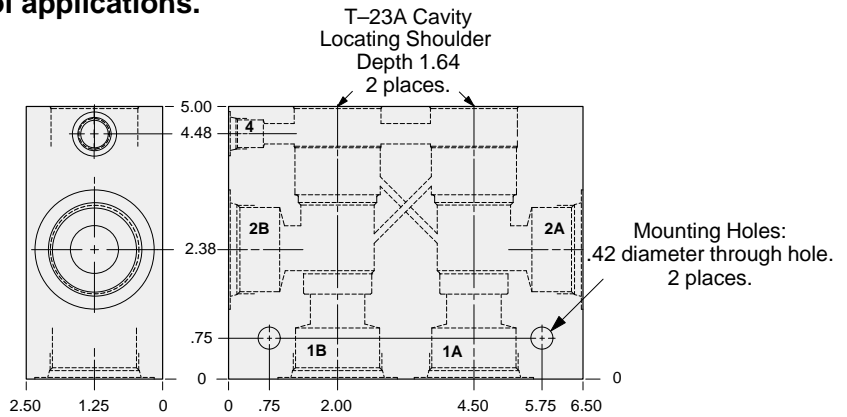
LINE MOUNT BODIES



- Aluminum rated to 3000 psi.
- Ductile Iron rated to 5000 psi.



Two cavity 90 degree cross-piloted body with common port 4 for load control applications.



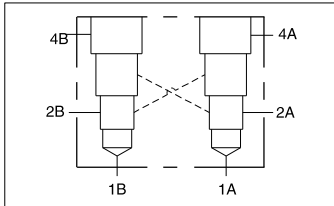
TYPICAL CARTRIDGES USED WITH THIS BODY

- CWGA - *** Page 4.19
 CWGG - *** Page 4.21
 CVGV - *** Page 4.23

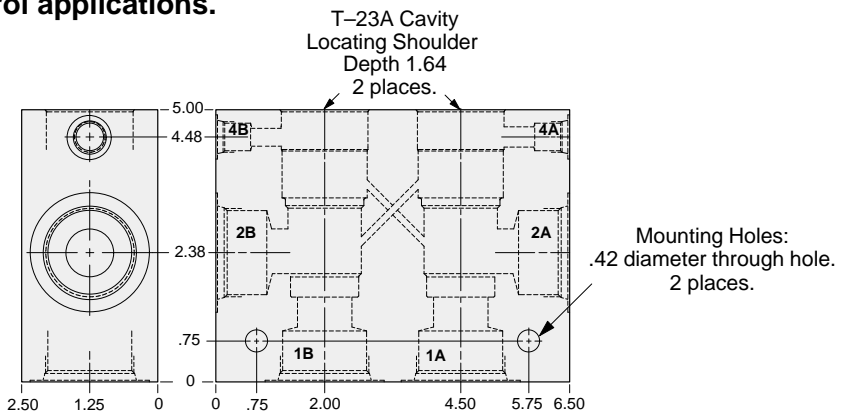
S3 T23A Instructions for ordering complete cartridge and body assemblies. Page v

Pressure ratings, material specifications. Page 11.02

Ports 1 A, 1 B 2 A, 2 B	Port 4	ALUMINUM		DUCTILE IRON	
		Part Number	List Price	Part Number	List Price
.75 NPTF	.25 NPTF	XMD		XMD/S	
1.00 NPTF	.25 NPTF	XME		XME/S	
1.25 NPTF	.25 NPTF	XMF		XMF/S	
SAE-12	SAE-6	XML		XML/S	
SAE-16	SAE-6	XMM		XMM/S	
SAE-20	SAE-6	XMN		XMN/S	
.75 BSPP	.25 BSPP	XMW		XMW/S	
1.00 BSPP	.25 BSPP	XXM		XXM/S	
1.25 BSPP	.25 BSPP	XMY		XMY/S	



Two cavity 90 degree cross-piloted body with independent port 4 for load control applications.



TYPICAL CARTRIDGES USED WITH THIS BODY

- CWGA - *** Page 4.19
 CWGG - *** Page 4.21
 CVGV - *** Page 4.23

Instructions for ordering complete cartridge and body assemblies. Page v

Pressure ratings, material specifications. Page 11.02

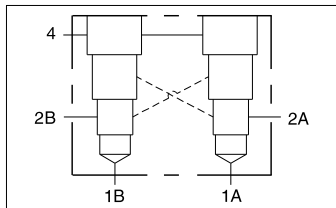
Ports 1 A, 1 B 2 A, 2 B	Ports 4A, 4B	ALUMINUM		DUCTILE IRON	
		Part Number	List Price	Part Number	List Price
.75 NPTF	.25 NPTF	VAD		VAD/S	
1.00 NPTF	.25 NPTF	VAE		VAE/S	
1.25 NPTF	.25 NPTF	VAF		VAF/S	
SAE-12	SAE-6	VAL		VAL/S	
SAE-16	SAE-6	VAM		VAM/S	
SAE-20	SAE-6	VAN		VAN/S	
.75 BSPP	.25 BSPP	VAW		VAW/S	
1.00 BSPP	.25 BSPP	VAX		VAX/S	
1.25 BSPP	.25 BSPP	VAY		VAY/S	



LINE MOUNT BODIES



- Aluminum rated to 3000 psi.
- Ductile Iron rated to 5000 psi.

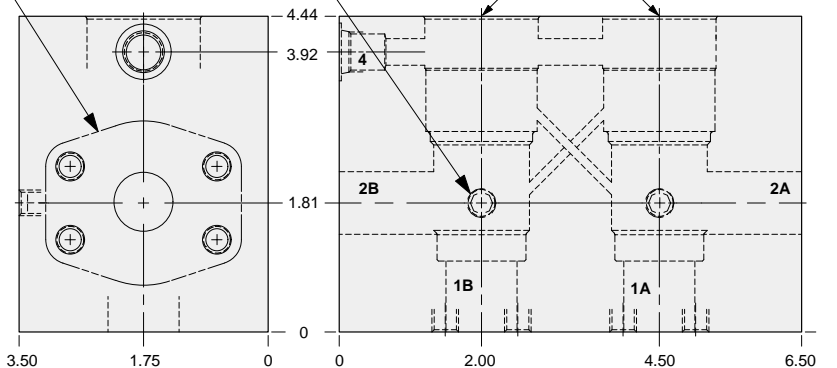


Two cavity cross-piloted 1.00" SAE Code 61 flange port body with common port 4 for load control applications.

1.00" SAE Code 61
4-Bolt Flange Pattern
4 places.

Mounting Holes:
(opposite side)
Inch: .375-16 UNC-2B
x .62 deep.
Metric: M10 x 1.50-6H
x .62 deep.
2 places.

T-23A Cavity
Locating Shoulder
Depth 1.64
2 places.



TYPICAL CARTRIDGES USED WITH THIS BODY

CWGA - *** Page 4.19
CWGG - *** Page 4.21
CVGV - *** Page 4.23

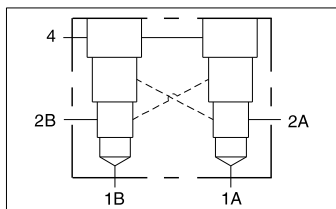
Instructions for ordering complete cartridge and body assemblies. Page v

Pressure ratings, material specifications. Page 11.02

SAE Specifications Page 11.03

Mounting Hole Dimensions	Port 4	ALUMINUM		DUCTILE IRON	
		Part Number	List Price	Part Number	List Price
Inch	SAE-6	XMP		XMP/S	
Metric	.25 BSPP	XMP/M		XMP/T	

S3
T23A

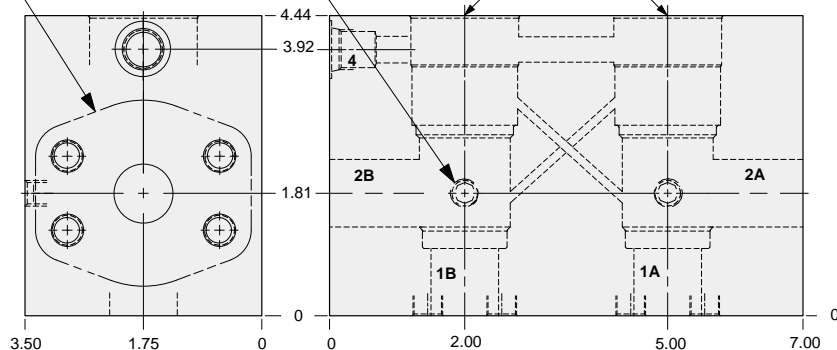


Two cavity cross-piloted 1.00" SAE Code 62 flange port body with common port 4 for load control applications.

1.00" SAE Code 62
4-Bolt Flange Pattern
4 places.

Mounting Holes:
(opposite side)
Inch: .375-16 UNC-2B
x .62 deep.
Metric: M10 x 1.50-6H
x .62 deep.
2 places.

T-23A Cavity
Locating Shoulder
Depth 1.64
2 places.



TYPICAL CARTRIDGES USED WITH THIS BODY

CWGA - *** Page 4.19
CWGG - *** Page 4.21
CVGV - *** Page 4.23

Instructions for ordering complete cartridge and body assemblies. Page v

Pressure ratings, material specifications. Page 11.02

SAE Specifications Page 11.03

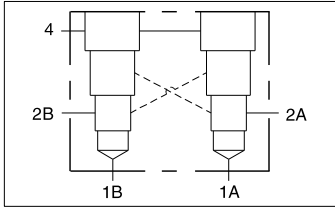
Mounting Hole Dimensions	Port 4	ALUMINUM		DUCTILE IRON	
		Part Number	List Price	Part Number	List Price
Inch	SAE-6	XM4		XM4/S	
Metric	.25 BSPP	XM4/M		XM4/T	



LINE MOUNT BODIES



- Aluminum rated to 3000 psi.
- Ductile Iron rated to 5000 psi.



Two cavity cross-piloted 1.25" SAE Code 61 flange port body with common port 4 for load control applications.

TYPICAL CARTRIDGES USED WITH THIS BODY

- CWGA - *** Page 4.19
 CWGG - *** Page 4.21
 CVGV - *** Page 4.23

S3 T23A Instructions for ordering complete cartridge and body assemblies. Page v

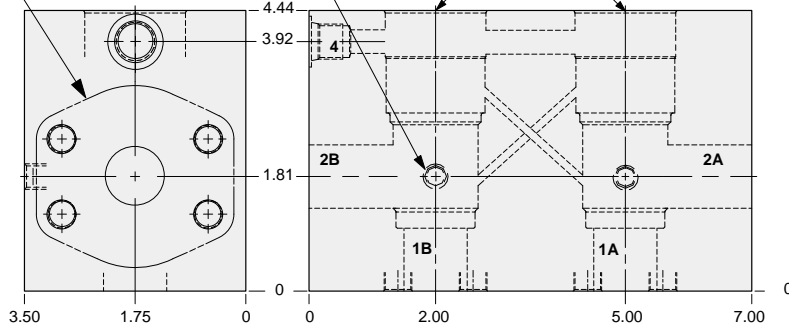
Pressure ratings, material specifications. Page 11.02

SAE Specifications Page 11.03

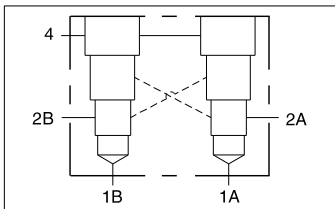
Mounting Holes:
 (opposite side)
 Inch: .375-16 UNC-2B
 x .62 deep.
 Metric: M10 x 1.50-6H
 x .62 deep.
 2 places.

1.25" SAE Code 61
 4-Bolt Flange Pattern
 4 places.

T-23A Cavity
 Locating Shoulder
 Depth 1.64
 2 places.



Mounting Hole Dimensions	Port 4	ALUMINUM		DUCTILE IRON	
		Part Number	List Price	Part Number	List Price
Inch	SAE-6	XMQ		XMQ/S	
Metric	.25 BSPP	XMQ/M		XMQ/T	



Two cavity cross-piloted 1.25" SAE Code 62 flange port body with common port 4 for load control applications.

TYPICAL CARTRIDGES USED WITH THIS BODY

- CWGA - *** Page 4.19
 CWGG - *** Page 4.21
 CVGV - *** Page 4.23

Instructions for ordering complete cartridge and body assemblies. Page v

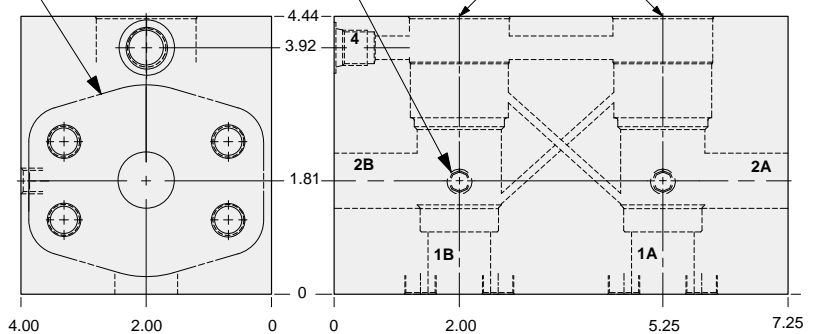
Pressure ratings, material specifications. Page 11.02

SAE Specifications Page 11.03

Mounting Holes:
 (opposite side)
 Inch: .375-16 UNC-2B
 x .62 deep.
 Metric: M10 x 1.50-6H
 x .62 deep.
 2 places.

1.25" SAE Code 62
 4-Bolt Flange Pattern
 4 places.

T-23A Cavity
 Locating Shoulder
 Depth 1.64
 2 places.



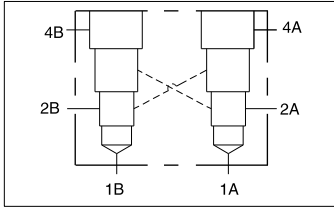
Mounting Hole Dimensions	Port 4	ALUMINUM		DUCTILE IRON	
		Part Number	List Price	Part Number	List Price
Inch	SAE-6	XM5		XM5/S	
Metric	.25 BSPP	XM5/M		XM5/T	



LINE MOUNT BODIES



- Aluminum rated to 3000 psi.
- Ductile Iron rated to 5000 psi.



Two cavity cross-piloted 1.00" SAE Code 61 flange port body with independent port 4 for load control applications.

TYPICAL CARTRIDGES USED WITH THIS BODY

CWGA - *** Page 4.19
 CWGG - *** Page 4.21
 CVGV - *** Page 4.23

Instructions for ordering complete cartridge and body assemblies. Page v

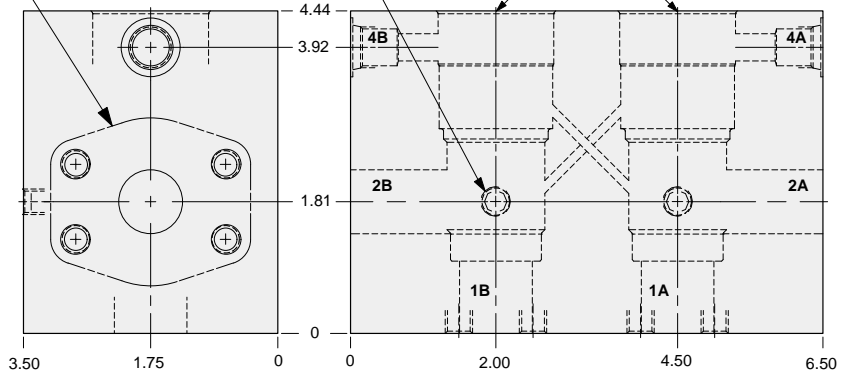
Pressure ratings, material specifications. Page 11.02

SAE Specifications Page 11.03

Mounting Holes:
 (opposite side)
 Inch: .375-16 UNC-2B
 x .62 deep.
 Metric: M10 x 1.50-6H
 x .62 deep.
 2 places.

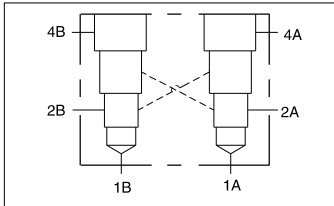
1.00" SAE Code 61
 4-Bolt Flange Pattern
 4 places.

T-23A Cavity
 Locating Shoulder
 Depth 1.64
 2 places.



Mounting Hole Dimensions	Ports 4A, 4B	ALUMINUM		DUCTILE IRON	
		Part Number	List Price	Part Number	List Price
Inch	SAE-6	VAP		VAP/S	
Metric	.25 BSPP	VAP/M		VAP/T	

S3
T23A



Two cavity cross-piloted 1.00" SAE Code 62 flange port body with independent port 4 for load control applications.

TYPICAL CARTRIDGES USED WITH THIS BODY

CWGA - *** Page 4.19
 CWGG - *** Page 4.21
 CVGV - *** Page 4.23

Instructions for ordering complete cartridge and body assemblies. Page v

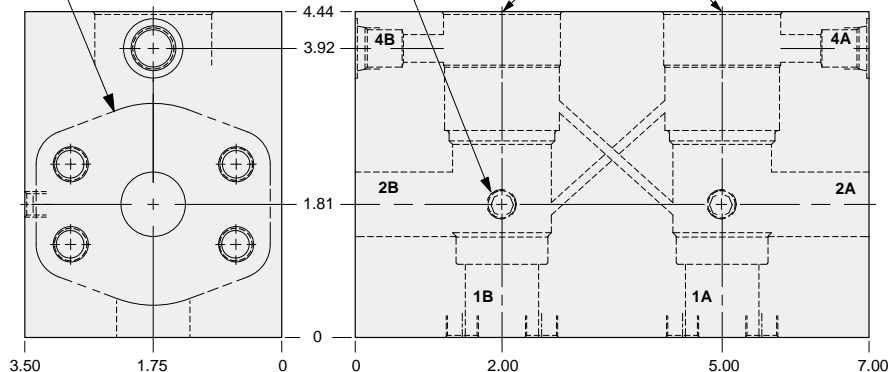
Pressure ratings, material specifications. Page 11.02

SAE Specifications Page 11.03

Mounting Holes:
 (opposite side)
 Inch: .375-16 UNC-2B
 x .62 deep.
 Metric: M10 x 1.50-6H
 x .62 deep.
 2 places.

1.00" SAE Code 62
 4-Bolt Flange Pattern
 4 places.

T-23A Cavity
 Locating Shoulder
 Depth 1.64
 2 places.



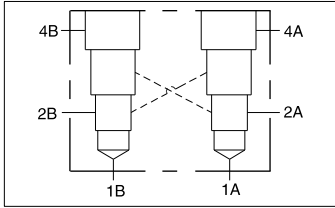
Mounting Hole Dimensions	Ports 4A, 4B	ALUMINUM		DUCTILE IRON	
		Part Number	List Price	Part Number	List Price
Inch	SAE-6	VA4		VA4/S	
Metric	.25 BSPP	VA4/M		VA4/T	



LINE MOUNT BODIES



- Aluminum rated to 3000 psi.
- Ductile Iron rated to 5000 psi.



Two cavity cross-piloted 1.25" SAE Code 61 flange port body with independent port 4 for load control applications.

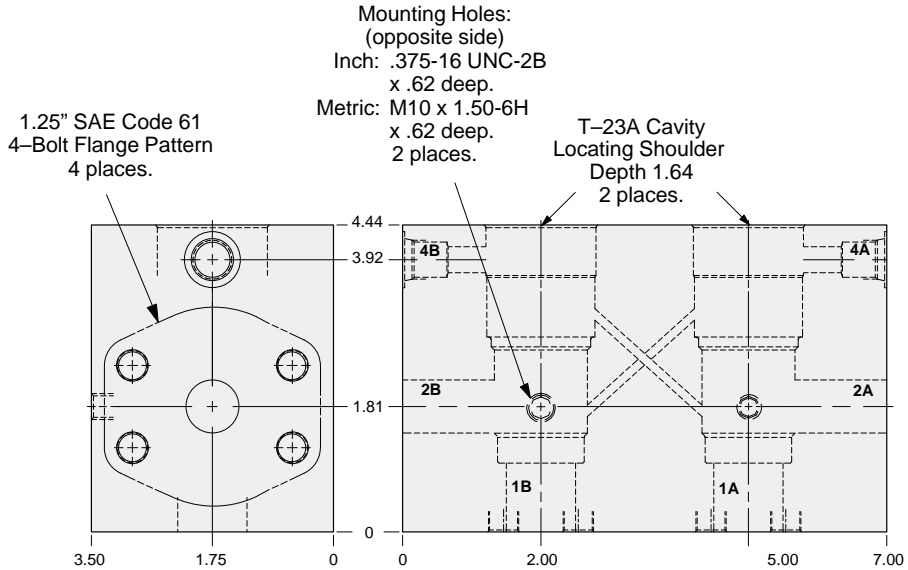
TYPICAL CARTRIDGES USED WITH THIS BODY

- CWGA - *** Page 4.19
 CWGG - *** Page 4.21
 CVGV - *** Page 4.23

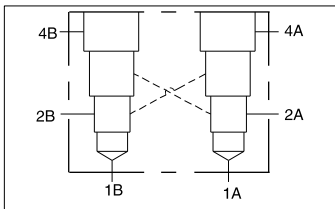
S3 T23A Instructions for ordering complete cartridge and body assemblies. Page v

Pressure ratings, material specifications. Page 11.02

SAE Specifications Page 11.03



Mounting Hole Dimensions	Ports 4A, 4B	ALUMINUM		DUCTILE IRON	
		Part Number	List Price	Part Number	List Price
Inch	SAE-6	VAQ		VAQ/S	
Metric	.25 BSPP	VAQ/M		VAQ/T	



Two cavity cross-piloted 1.25" SAE Code 62 flange port body with independent port 4 for load control applications.

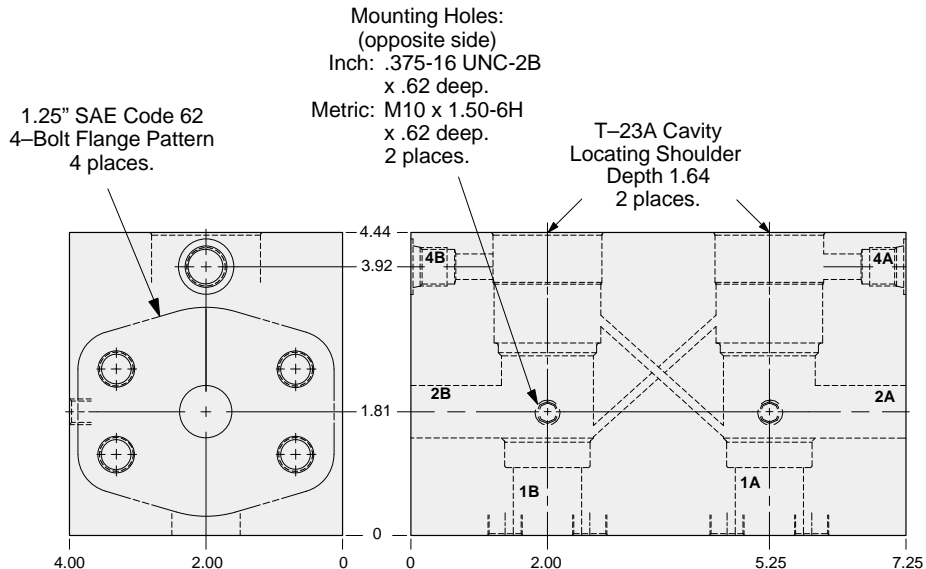
TYPICAL CARTRIDGES USED WITH THIS BODY

- CWGA - *** Page 4.19
 CWGG - *** Page 4.21
 CVGV - *** Page 4.23

Instructions for ordering complete cartridge and body assemblies. Page v

Pressure ratings, material specifications. Page 11.02

SAE Specifications Page 11.03



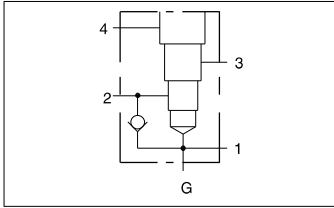
Mounting Hole Dimensions	Ports 4A, 4B	ALUMINUM		DUCTILE IRON	
		Part Number	List Price	Part Number	List Price
Inch	SAE-6	VA5		VA5/S	
Metric	.25 BSPP	VA5/M		VA5/T	



LINE MOUNT BODIES

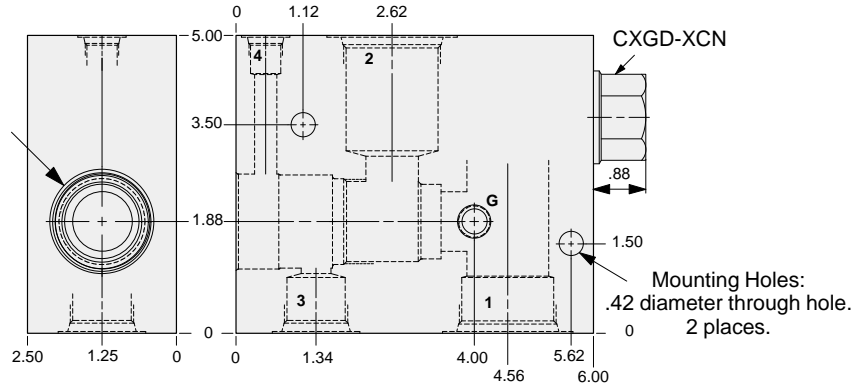


- Aluminum rated to 3000 psi.
- Ductile Iron rated to 5000 psi.



Body with reverse free flow check and gage port for reducing/relieving applications.

T-23A Cavity Locating Shoulder Depth 1.62



TYPICAL CARTRIDGES USED WITH THIS BODY

PVHA - *** Page 3.15
PVHB - *** Page 3.17

Cartridge seal type determines check valve seal type.

Instructions for ordering complete cartridge and body assemblies. Page v

Pressure ratings, material specifications. Page 11.02

Ports 1 & 2	Port 3	Port 4	Gage Port	ALUMINUM		DUCTILE IRON	
				Part Number	List Price	Part Number	List Price
.75 NPTF	.75 NPTF	.25 NPTF	.25 NPTF	P4D		P4D/S	
1.00 NPTF	.75 NPTF	.25 NPTF	.25 NPTF	P4E		P4E/S	
1.25 NPTF	.75 NPTF	.25 NPTF	.25 NPTF	P4F		P4F/S	
SAE-12	SAE-12	SAE-6	.25 NPTF	P4L		P4L/S	
SAE-16	SAE-12	SAE-6	.25 NPTF	P4M		P4M/S	
SAE-20	SAE-12	SAE-6	.25 NPTF	P4N		P4N/S	
.75 BSPP	.75 BSPP	.25 BSPP	.25 BSPP	P4W		P4W/S	
1.00 BSPP	.75 BSPP	.25 BSPP	.25 BSPP	P4X		P4X/S	
1.25 BSPP	.75 BSPP	.25 BSPP	.25 BSPP	P4Y		P4Y/S	

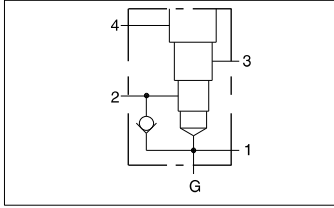
S3
T23A



LINE MOUNT BODIES



- Aluminum rated to 3000 psi.
- Ductile Iron rated to 5000 psi.



1.25" SAE Code 61 flange port body with reverse free flow check and gage port for reducing/relieving applications.

TYPICAL CARTRIDGES USED WITH THIS BODY

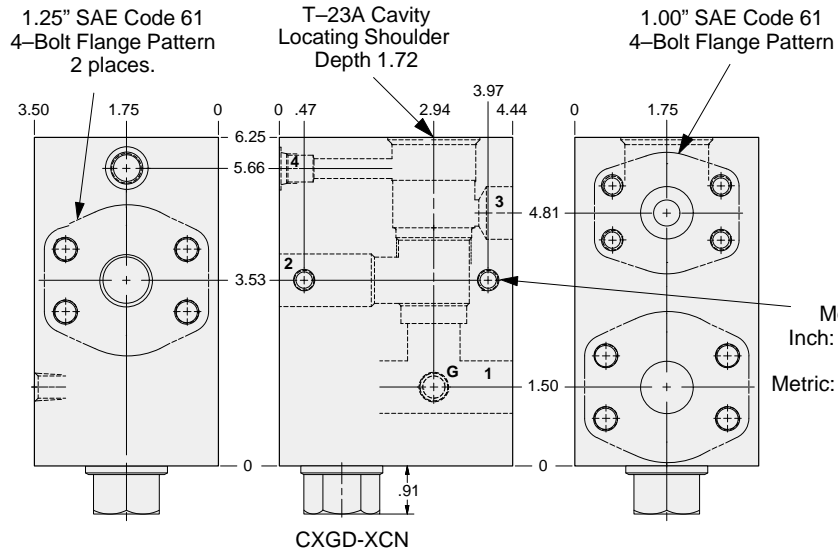
PVHA - *** Page 3.15
 PVHB - *** Page 3.17

Cartridge seal type determines check valve seal type.

Instructions for ordering complete cartridge and body assemblies. Page v

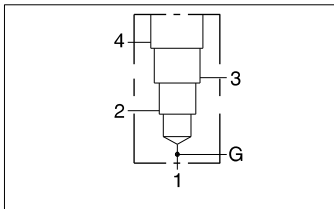
Pressure ratings, material specifications. Page 11.02

SAE Specifications Page 11.03



Mounting Hole Dimensions	Port 3 SAE Code 61	Port 4	Gage Port	ALUMINUM		DUCTILE IRON	
				Part Number	List Price	Part Number	List Price
Inch	1.00"	SAE-6	.25 NPTF	P4Q		P4Q/S	
Metric	1.00"	.25 BSPP	.25 BSPP	P4Q/M		P4Q/T	

S3
T23A



1.25" SAE Code 62 flange port body with reverse free flow check and gage port for reducing/relieving applications.

TYPICAL CARTRIDGES USED WITH THIS BODY

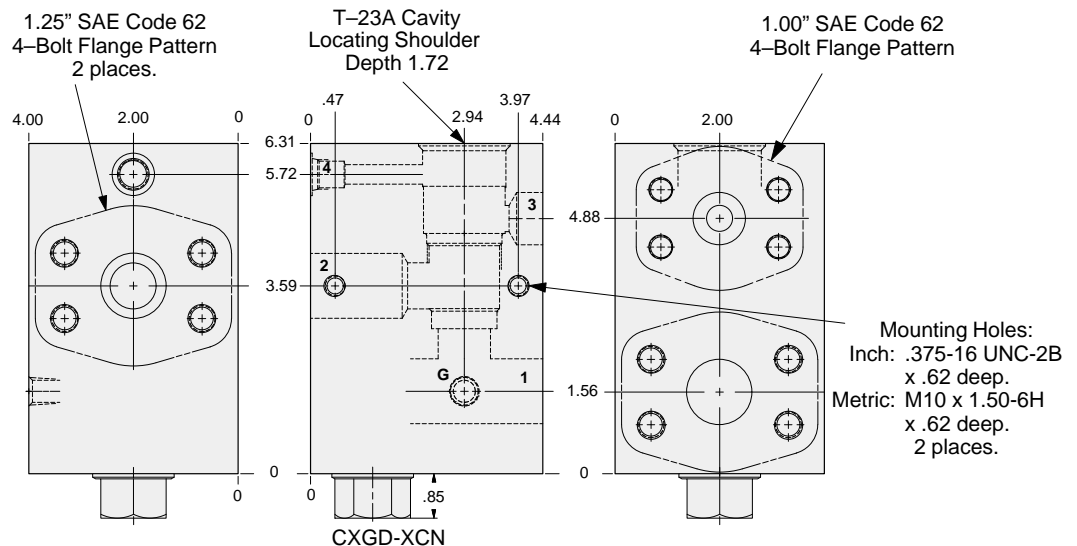
PVHA - *** Page 3.15
 PVHB - *** Page 3.17

Cartridge seal type determines check valve seal type.

Instructions for ordering complete cartridge and body assemblies. Page v

Pressure ratings, material specifications. Page 11.02

SAE Specifications Page 11.03



Mounting Hole Dimensions	Port 3 SAE Code 62	Port 4	Gage Port	ALUMINUM		DUCTILE IRON	
				Part Number	List Price	Part Number	List Price
Inch	1.00"	SAE-6	.25 NPTF	P45		P45/S	
Metric	1.00"	.25 BSPP	.25 BSPP	P45/M		P45/T	