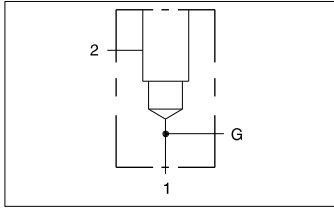




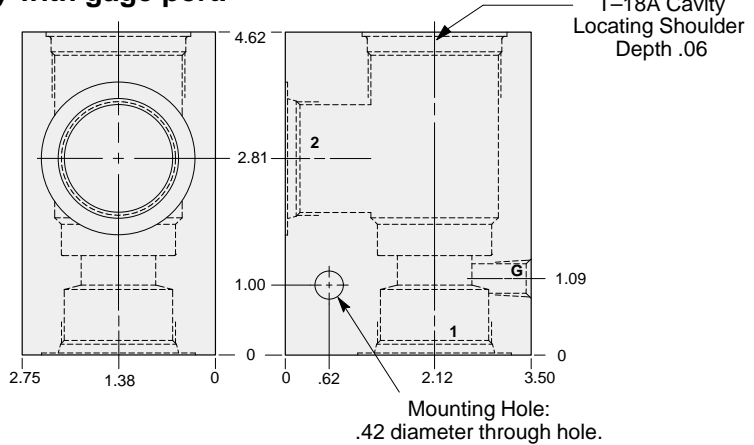
LINE MOUNT BODIES



- Aluminum rated to 3000 psi.
- Ductile Iron rated to 5000 psi.



90 degree body with gage port.



TYPICAL CARTRIDGES USED WITH THIS BODY

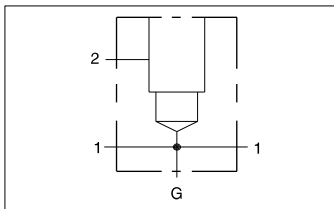
RPKC - ***	Page 1.07
RPKE - ***	Page 1.09
RDJA - ***	Page 1.11
RQKB - ***	Page 1.13
RPKD - ***	Page 1.15
CXJA - ***	Page 5.09
CXID - ***	Page 5.11
NFFC - ***	Page 5.13
CNIC - ***	Page 5.15
NCGB - ***	Page 5.17
NCGC - ***	Page 5.19
FXFA - ***	Page 5.21
FCFB - ***	Page 5.23
FDFA - ***	Page 5.25
FQIA - ***	Page 10.15

Instructions for ordering complete cartridge and body assemblies. Page v

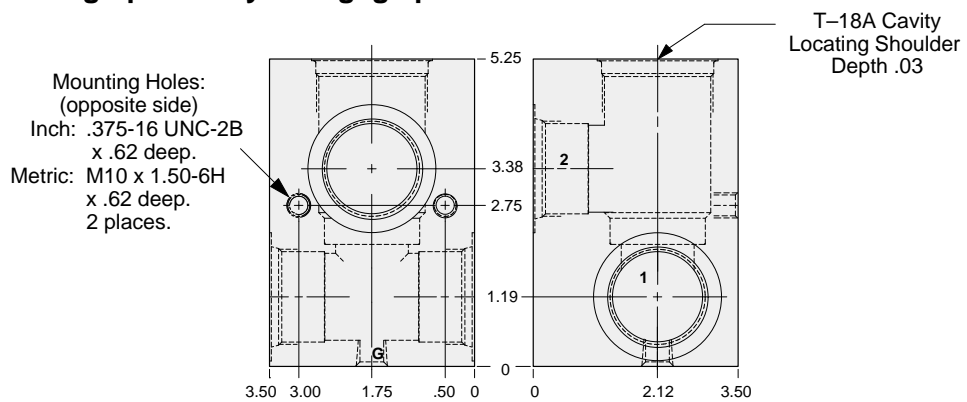
Pressure ratings, material specifications. Page 11.02

S4
T18A

Ports 1 & 2	Gage Port	ALUMINUM		DUCTILE IRON	
		Part Number	List Price	Part Number	List Price
.75 NPTF	.25 NPTF	LAD		LAD/S	
1.00 NPTF	.25 NPTF	LAE		LAE/S	
1.25 NPTF	.25 NPTF	LAF		LAF/S	
SAE-12	.25 NPTF	LAL		LAL/S	
SAE-16	.25 NPTF	LAM		LAM/S	
SAE-20	.25 NPTF	LAN		LAN/S	
.75 BSPP	.25 BSPP	LAW		LAW/S	
1.00 BSPP	.25 BSPP	LAX		LAX/S	
1.25 BSPP	.25 BSPP	LAY		LAY/S	



Through port body with gage port.



TYPICAL CARTRIDGES USED WITH THIS BODY

RPKC - ***	Page 1.07
RPKE - ***	Page 1.09
RDJA - ***	Page 1.11
RQKB - ***	Page 1.13
RPKD - ***	Page 1.15
NFFC - ***	Page 5.13
CNIC - ***	Page 5.15
NCGB - ***	Page 5.17
NCGC - ***	Page 5.19
FXFA - ***	Page 5.21
FCFB - ***	Page 5.23
FDFA - ***	Page 5.25

Instructions for ordering complete cartridge and body assemblies. Page v

Pressure ratings, material specifications. Page 11.02

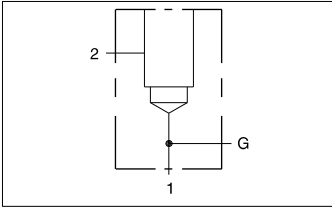
Mounting Hole Dimensions	Ports 1 & 2	Gage Port	ALUMINUM		DUCTILE IRON	
			Part Number	List Price	Part Number	List Price
Inch	.75 NPTF	.25 NPTF	LED		LED/S	
Inch	1.00 NPTF	.25 NPTF	LEE		LEE/S	
Inch	1.25 NPTF	.25 NPTF	LEF		LEF/S	
Inch	SAE-12	.25 NPTF	LEL		LEL/S	
Inch	SAE-16	.25 NPTF	LEM		LEM/S	
Inch	SAE-20	.25 NPTF	LEN		LEN/S	
Metric	.75 BSPP	.25 BSPP	LEW		LEW/S	
Metric	1.00 BSPP	.25 BSPP	LEX		LEX/S	
Metric	1.25 BSPP	.25 BSPP	LEY		LEY/S	



LINE MOUNT BODIES



- Aluminum rated to 3000 psi.
- Ductile Iron rated to 5000 psi.

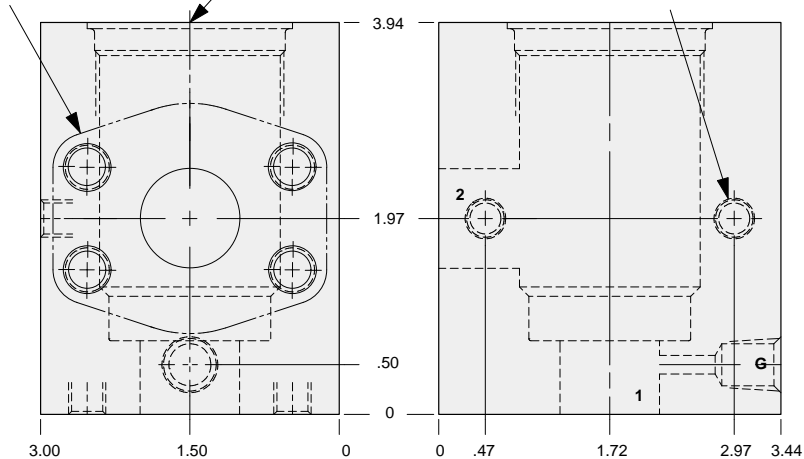


90 degree 1.00" SAE Code 61 flange port body with gage port.

1.00" SAE Code 61
4-Bolt Flange Pattern
2 places.

T-18A Cavity
Locating Shoulder
Depth .06

Mounting Holes:
(opposite side)
Inch: .375-16 UNC-2B
x .62 deep.
Metric: M10 x 1.50-6H
x .62 deep.
2 places.



TYPICAL CARTRIDGES USED WITH THIS BODY

RPKC - ***	Page 1.07
RPKE - ***	Page 1.09
RDJA - ***	Page 1.11
RQKB - ***	Page 1.13
RPKD - ***	Page 1.15
CXJA - ***	Page 5.09
CXID - ***	Page 5.11
NFFC - ***	Page 5.13
CNIC - ***	Page 5.15
NCGB - ***	Page 5.17
NCGC - ***	Page 5.19
FXFA - ***	Page 5.21
FCFB - ***	Page 5.23
FDFA - ***	Page 5.25
FQIA - ***	Page 10.15

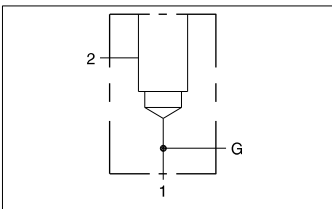
Instructions for ordering complete cartridge and body assemblies. Page v

Pressure ratings, material specifications. Page 11.02

SAE Specifications Page 11.03

Mounting Hole Dimensions	Gage Port	ALUMINUM		DUCTILE IRON	
		Part Number	List Price	Part Number	List Price
Inch	.25 NPTF	LAP		LAP/S	
Metric	.25 BSPP	LAP/M		LAP/T	

S4
T18A

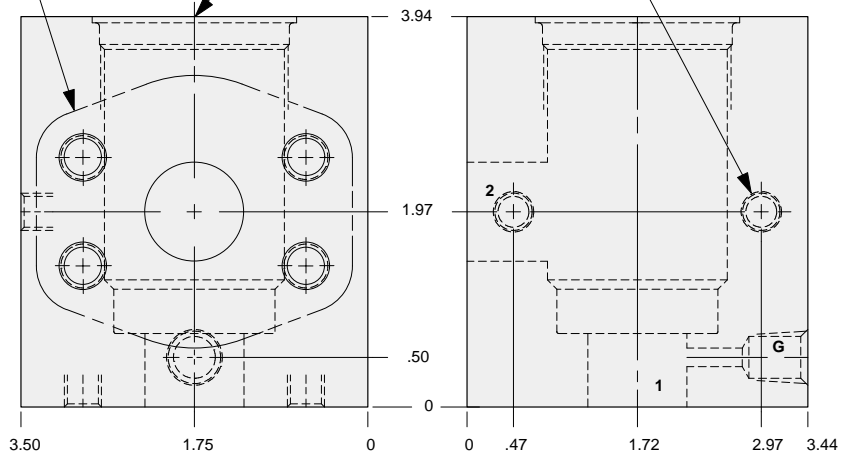


90 degree 1.00" SAE Code 62 flange port body with gage port.

1.00" SAE Code 62
4-Bolt Flange Pattern
2 places.

T-18A Cavity
Locating Shoulder
Depth .06

Mounting Holes:
(opposite side)
Inch: .375-16 UNC-2B
x .62 deep.
Metric: M10 x 1.50-6H
x .62 deep.
2 places.



TYPICAL CARTRIDGES USED WITH THIS BODY

RPKC - ***	Page 1.07
RPKE - ***	Page 1.09
RDJA - ***	Page 1.11
RQKB - ***	Page 1.13
RPKD - ***	Page 1.15
CXJA - ***	Page 5.09
CXID - ***	Page 5.11
NFFC - ***	Page 5.13
CNIC - ***	Page 5.15
NCGB - ***	Page 5.17
NCGC - ***	Page 5.19
FXFA - ***	Page 5.21
FCFB - ***	Page 5.23
FDFA - ***	Page 5.25
FQIA - ***	Page 10.15

Instructions for ordering complete cartridge and body assemblies. Page v

Pressure ratings, material specifications. Page 11.02

SAE Specifications Page 11.03

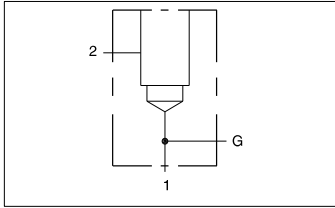
Mounting Hole Dimensions	Gage Port	ALUMINUM		DUCTILE IRON	
		Part Number	List Price	Part Number	List Price
Inch	.25 NPTF	LA4		LA4/S	
Metric	.25 BSPP	LA4/M		LA4/T	



LINE MOUNT BODIES



- Aluminum rated to 3000 psi.
- Ductile Iron rated to 5000 psi.

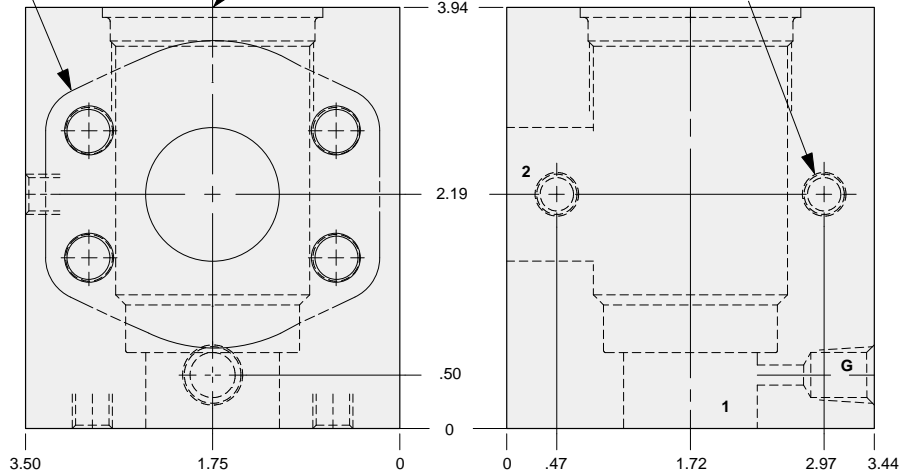


90 degree 1.25" SAE Code 61 flange port body with gage port.

1.25" SAE Code 61
4-Bolt Flange Pattern
2 places.

T-18A Cavity
Locating Shoulder
Depth .09

Mounting Holes:
(opposite side)
Inch: .375-16 UNC-2B
x .75 deep.
Metric: M10 x 1.50-6H
x .75 deep.
2 places.



TYPICAL CARTRIDGES USED WITH THIS BODY

RPKC - ***	Page 1.07
RPKE - ***	Page 1.09
RDJA - ***	Page 1.11
RQKB - ***	Page 1.13
RPKD - ***	Page 1.15
CXJA - ***	Page 5.09
CXID - ***	Page 5.11
NFFC - ***	Page 5.13
CNIC - ***	Page 5.15
NCGB - ***	Page 5.17
NCGC - ***	Page 5.19
FXFA - ***	Page 5.21
FCFB - ***	Page 5.23
FDFA - ***	Page 5.25
FQIA - ***	Page 10.15

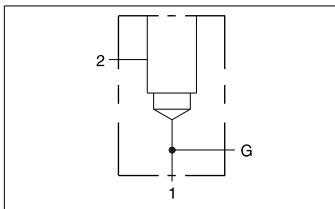
Instructions for ordering complete cartridge and body assemblies. Page v

Pressure ratings, material specifications. Page 11.02

SAE Specifications Page 11.03

Mounting Hole Dimensions	Gage Port	ALUMINUM		DUCTILE IRON	
		Part Number	List Price	Part Number	List Price
Inch	.25 NPTF	LAQ		LAQ/S	
Metric	.25 BSPP	LAQ/M		LAQ/T	

S4
T18A

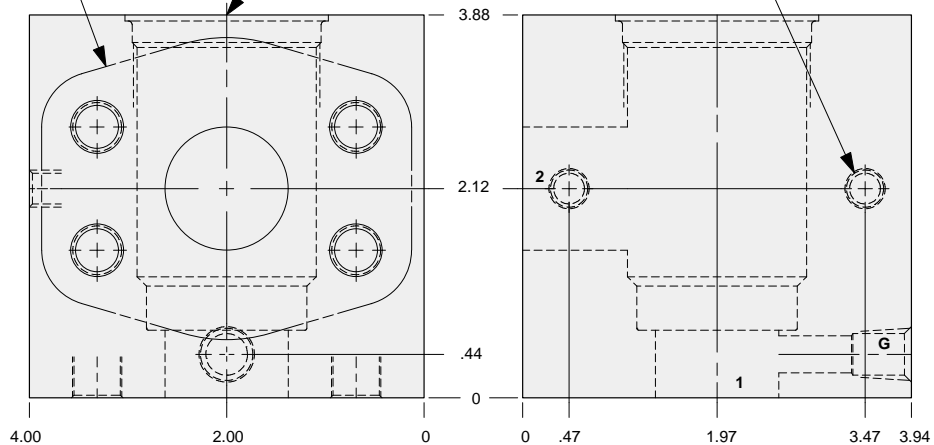


90 degree 1.25" SAE Code 62 flange port body with gage port.

1.25" SAE Code 62
4-Bolt Flange Pattern
2 places.

T-18A Cavity
Locating Shoulder
Depth .06

Mounting Holes:
(opposite side)
Inch: .375-16 UNC-2B
x .75 deep.
Metric: M10 x 1.50-6H
x .75 deep.
2 places.



TYPICAL CARTRIDGES USED WITH THIS BODY

RPKC - ***	Page 1.07
RPKE - ***	Page 1.09
RDJA - ***	Page 1.11
RQKB - ***	Page 1.13
RPKD - ***	Page 1.15
CXJA - ***	Page 5.09
CXID - ***	Page 5.11
NFFC - ***	Page 5.13
CNIC - ***	Page 5.15
NCGB - ***	Page 5.17
NCGC - ***	Page 5.19
FXFA - ***	Page 5.21
FCFB - ***	Page 5.23
FDFA - ***	Page 5.25
FQIA - ***	Page 10.15

Instructions for ordering complete cartridge and body assemblies. Page v

Pressure ratings, material specifications. Page 11.02

SAE Specifications Page 11.03

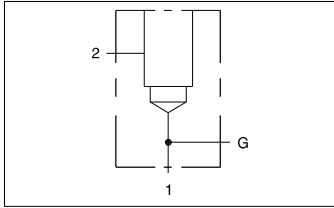
Mounting Hole Dimensions	Gage Port	ALUMINUM		DUCTILE IRON	
		Part Number	List Price	Part Number	List Price
Inch	.25 NPTF	LA5		LA5/S	
Metric	.25 BSPP	LA5/M		LA5/T	



LINE MOUNT BODIES



- Aluminum rated to 3000 psi.
- Ductile Iron rated to 5000 psi.

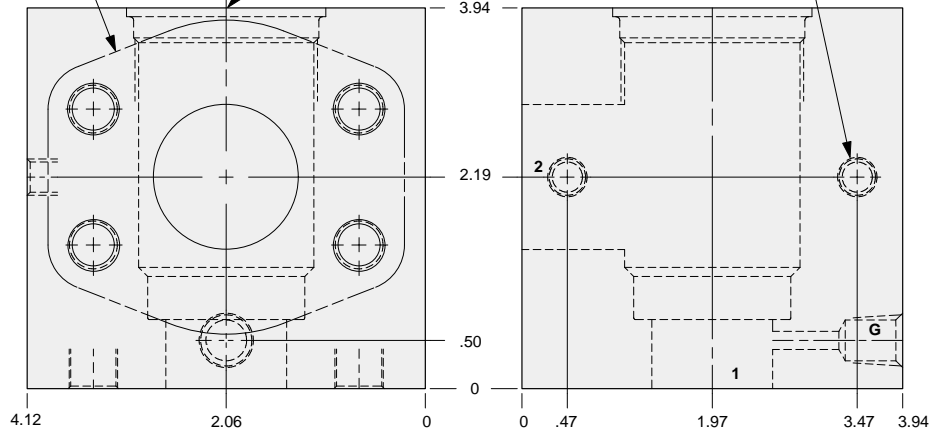


90 degree 1.50" SAE Code 61 flange port body with gage port.

1.50" SAE Code 61
4-Bolt Flange Pattern
2 places.

T-18A Cavity
Locating Shoulder
Depth .09

Mounting Holes:
(opposite side)
Inch: .375-16 UNC-2B
x .75 deep.
Metric: M10 x 1.50-6H
x .75 deep.
2 places.



Mounting Hole Dimensions	Gage Port	ALUMINUM		DUCTILE IRON	
		Part Number	List Price	Part Number	List Price
Inch	.25 NPTF	LAR		LAR/S	
Metric	.25 BSPP	LAR/M		LAR/T	

TYPICAL CARTRIDGES USED WITH THIS BODY

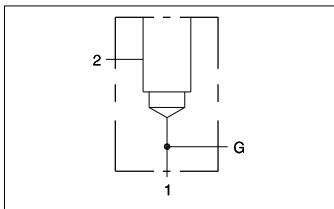
RPKC - ***	Page 1.07
RPKE - ***	Page 1.09
RDJA - ***	Page 1.11
RQKB - ***	Page 1.13
RPKD - ***	Page 1.15
CXJA - ***	Page 5.09
CXID - ***	Page 5.11
NFFC - ***	Page 5.13
CNIC - ***	Page 5.15
NCGB - ***	Page 5.17
NCGC - ***	Page 5.19
FXFA - ***	Page 5.21
FCFB - ***	Page 5.23
FDFA - ***	Page 5.25
FQIA - ***	Page 10.15

Instructions for ordering complete cartridge and body assemblies. Page v

Pressure ratings, material specifications. Page 11.02

SAE Specifications Page 11.03

S4
T18A

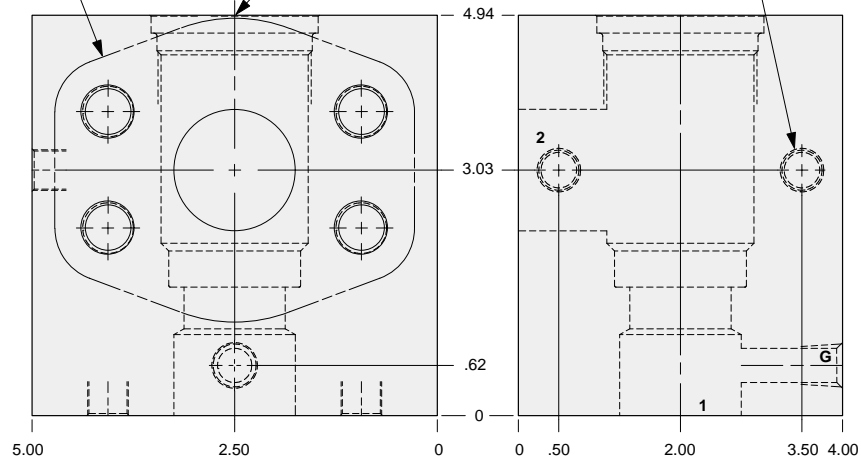


90 degree 1.50" SAE Code 62 flange port body with gage port.

1.50" SAE Code 62
4-Bolt Flange Pattern
2 places.

T-18A Cavity
Locating Shoulder
Depth .22

Mounting Holes:
(opposite side)
Inch: .500-13 UNC
x .75 deep.
Metric: M12 x 1.75-6H
x .75 deep.
2 places.



Mounting Hole Dimensions	Gage Port	ALUMINUM		DUCTILE IRON	
		Part Number	List Price	Part Number	List Price
Inch	.25 NPTF	LA6		LA6/S	
Metric	.25 BSPP	LA6/M		LA6/T	

TYPICAL CARTRIDGES USED WITH THIS BODY

RPKC - ***	Page 1.07
RPKE - ***	Page 1.09
RDJA - ***	Page 1.11
RQKB - ***	Page 1.13
RPKD - ***	Page 1.15
CXJA - ***	Page 5.09
CXID - ***	Page 5.11
NFFC - ***	Page 5.13
CNIC - ***	Page 5.15
NCGB - ***	Page 5.17
NCGC - ***	Page 5.19
FXFA - ***	Page 5.21
FCFB - ***	Page 5.23
FDFA - ***	Page 5.25
FQIA - ***	Page 10.15

Instructions for ordering complete cartridge and body assemblies. Page v

Pressure ratings, material specifications. Page 11.02

SAE Specifications Page 11.03

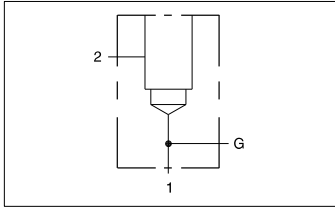


LINE MOUNT BODIES

- Aluminum rated to 3000 psi.
- Ductile Iron rated to 5000 psi.



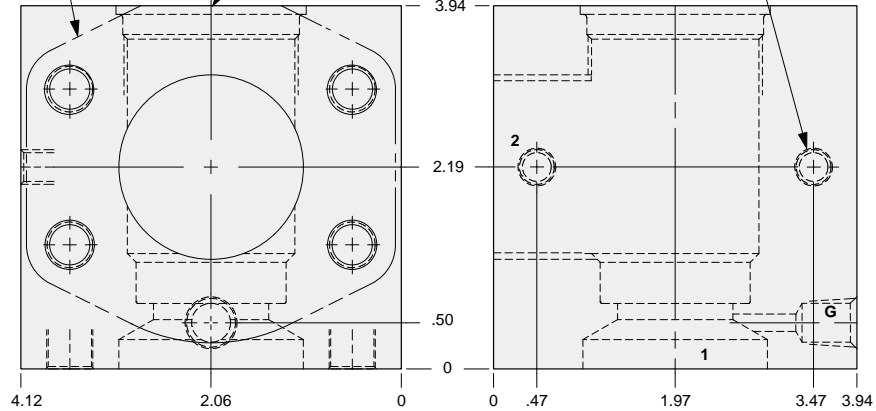
90 degree 2.00" SAE Code 61 flange port body with gage port.



2.00" SAE Code 61
4-Bolt Flange Pattern
2 places.

T-18A Cavity
Locating Shoulder
Depth .09

Mounting Holes:
(opposite side)
Inch: .375-16 UNC-2B
x .75 deep.
Metric: M10 x 1.50-6H
x .75 deep.
2 places.



Mounting Hole Dimensions	Gage Port	ALUMINUM		DUCTILE IRON	
		Part Number	List Price	Part Number	List Price
Inch	.25 NPTF	LAS		LAS/S	
Metric	.25 BSPP	LAS/M		LAS/T	

TYPICAL CARTRIDGES USED WITH THIS BODY

RPKC - ***	Page 1.07
RPKE - ***	Page 1.09
RDJA - ***	Page 1.11
RQKB - ***	Page 1.13
RPKD - ***	Page 1.15
CXJA - ***	Page 5.09
CXID - ***	Page 5.11
NFFC - ***	Page 5.13
CNIC - ***	Page 5.15
NCGB - ***	Page 5.17
NCGC - ***	Page 5.19
FXFA - ***	Page 5.21
FCFB - ***	Page 5.23
FDFA - ***	Page 5.25
FQIA - ***	Page 10.15

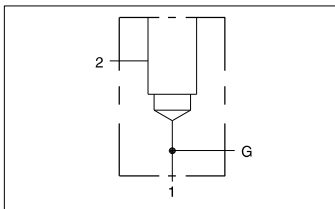
Instructions for ordering complete cartridge and body assemblies. Page v

Pressure ratings, material specifications. Page 11.02

SAE Specifications Page 11.03

S4
T18A

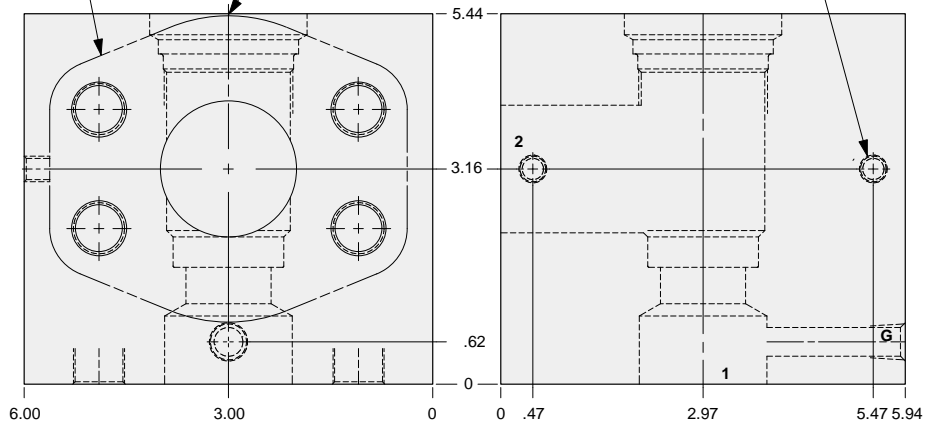
90 degree 2.00" SAE Code 62 flange port body with gage port.



2.00" SAE Code 62
4-Bolt Flange Pattern
2 places.

T-18A Cavity
Locating Shoulder
Depth .59

Mounting Holes:
(opposite side)
Inch: .375-16 UNC-2B
x .62 deep.
Metric: M10 x 1.50-6H
x .62 deep.
2 places.



Mounting Hole Dimensions	Gage Port	ALUMINUM		DUCTILE IRON	
		Part Number	List Price	Part Number	List Price
Inch	.25 NPTF	LA8		LA8/S	
Metric	.25 BSPP	LA8/M		LA8/T	

TYPICAL CARTRIDGES USED WITH THIS BODY

RPKC - ***	Page 1.07
RPKE - ***	Page 1.09
RDJA - ***	Page 1.11
RQKB - ***	Page 1.13
RPKD - ***	Page 1.15
CXJA - ***	Page 5.09
CXID - ***	Page 5.11
NFFC - ***	Page 5.13
CNIC - ***	Page 5.15
NCGB - ***	Page 5.17
NCGC - ***	Page 5.19
FXFA - ***	Page 5.21
FCFB - ***	Page 5.23
FDFA - ***	Page 5.25
FQIA - ***	Page 10.15

Instructions for ordering complete cartridge and body assemblies. Page v

Pressure ratings, material specifications. Page 11.02

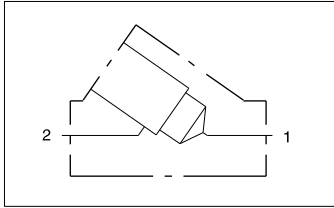
SAE Specifications Page 11.03



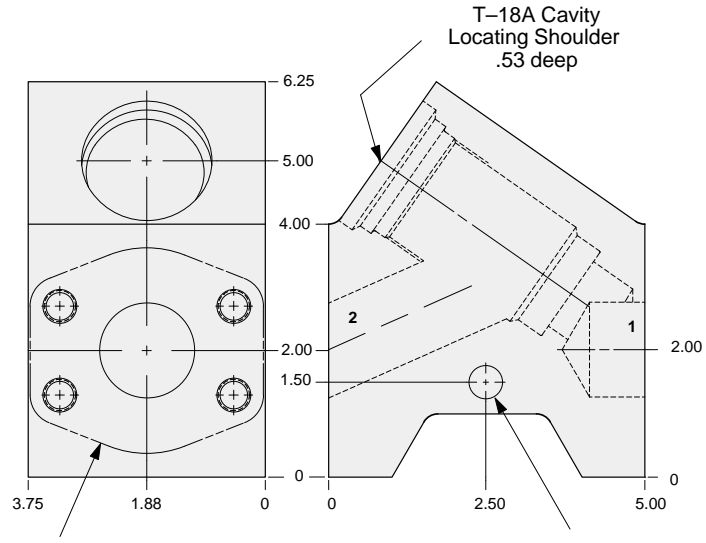
LINE MOUNT BODIES



- Aluminum rated to 3000 psi.
- Ductile Iron rated to 5000 psi.



Inline 1.50" SAE Code 61 flange port body.



1.50" SAE Code 61
4-Bolt Flange Pattern
2 places.

Mounting Hole:
Inch: .53 diameter through hole.
Metric: .50 diameter through hole.

S4
T18A

TYPICAL CARTRIDGES USED WITH THIS BODY

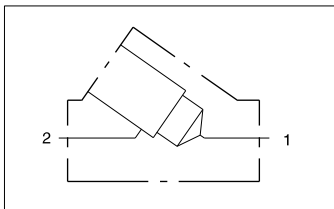
RPKC - ***	Page 1.07
RPKE - ***	Page 1.09
RDJA - ***	Page 1.11
RQKB - ***	Page 1.13
RPKD - ***	Page 1.15
CXJA - ***	Page 5.09
CXID - ***	Page 5.11
NFFC - ***	Page 5.13
CNIC - ***	Page 5.15
NCGB - ***	Page 5.17
NCGC - ***	Page 5.19
FXFA - ***	Page 5.21
FCFB - ***	Page 5.23
FDFA - ***	Page 5.25
FQIA - ***	Page 10.15

Instructions for ordering complete cartridge and body assemblies. Page v

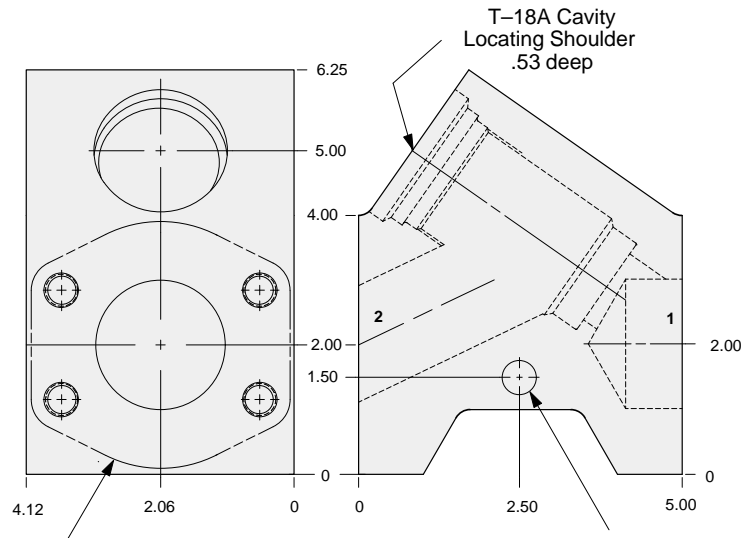
Pressure ratings, material specifications. Page 11.02

SAE Specifications Page 11.03

Mounting Hole Dimensions	ALUMINUM		DUCTILE IRON	
	Part Number	List Price	Part Number	List Price
Inch	ZLS		ZLS/S	
Metric	ZLS/M		ZLS/T	



Inline 2.00" SAE Code 61 flange port body.



2.00" SAE Code 61
4-Bolt Flange Pattern
2 places.

Mounting Hole:
Inch: .53 diameter through hole.
Metric: .50 diameter through hole.

TYPICAL CARTRIDGES USED WITH THIS BODY

RPKC - ***	Page 1.07
RPKE - ***	Page 1.09
RDJA - ***	Page 1.11
RQKB - ***	Page 1.13
RPKD - ***	Page 1.15
CXJA - ***	Page 5.09
CXID - ***	Page 5.11
NFFC - ***	Page 5.13
CNIC - ***	Page 5.15
NCGB - ***	Page 5.17
NCGC - ***	Page 5.19
FXFA - ***	Page 5.21
FCFB - ***	Page 5.23
FDFA - ***	Page 5.25
FQIA - ***	Page 10.15

Instructions for ordering complete cartridge and body assemblies. Page v

Pressure ratings, material specifications. Page 11.02

SAE Specifications Page 11.03

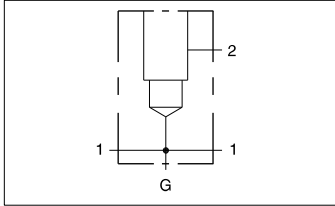
Mounting Hole Dimensions	ALUMINUM		DUCTILE IRON	
	Part Number	List Price	Part Number	List Price
Inch	ZLR		ZLR/S	
Metric	ZLR/M		ZLR/T	



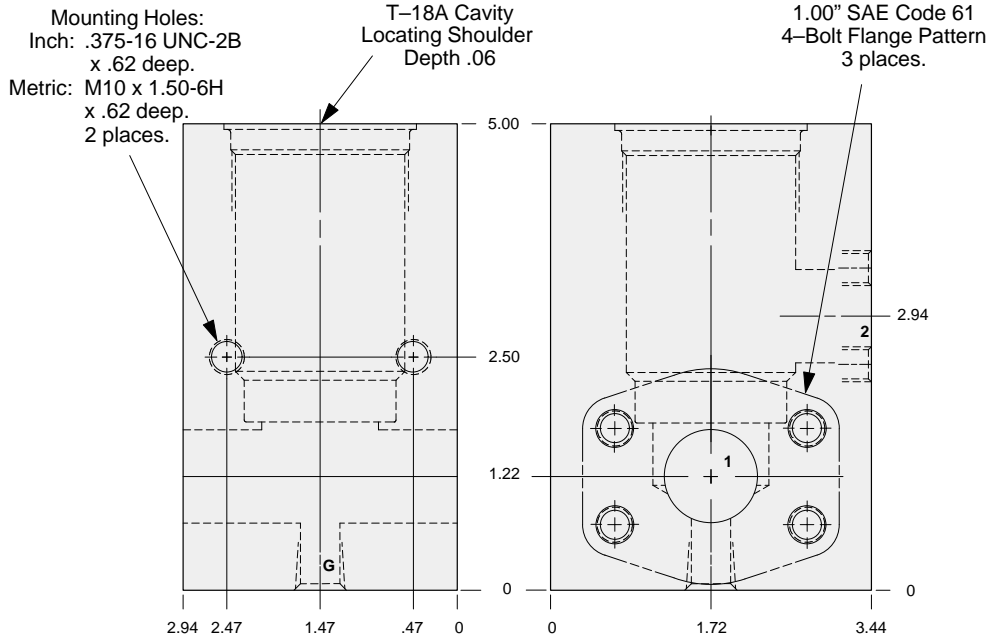
LINE MOUNT BODIES



- Aluminum rated to 3000 psi.
- Ductile Iron rated to 5000 psi.



Through port 1.00" SAE Code 61 flange port body with gage port.



TYPICAL CARTRIDGES USED WITH THIS BODY

RPKC - ***	Page 1.07
RPKE - ***	Page 1.09
RDJA - ***	Page 1.11
RQKB - ***	Page 1.13
RPKD - ***	Page 1.15
NFFC - ***	Page 5.13
CNIC - ***	Page 5.15
NCGB - ***	Page 5.17
NCGC - ***	Page 5.19
FXFA - ***	Page 5.21
FCFB - ***	Page 5.23
FDFA - ***	Page 5.25

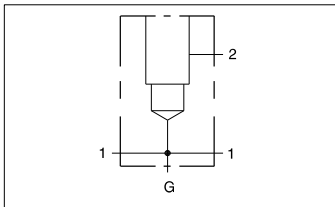
S4
T18A

Instructions for ordering complete cartridge and body assemblies. Page v

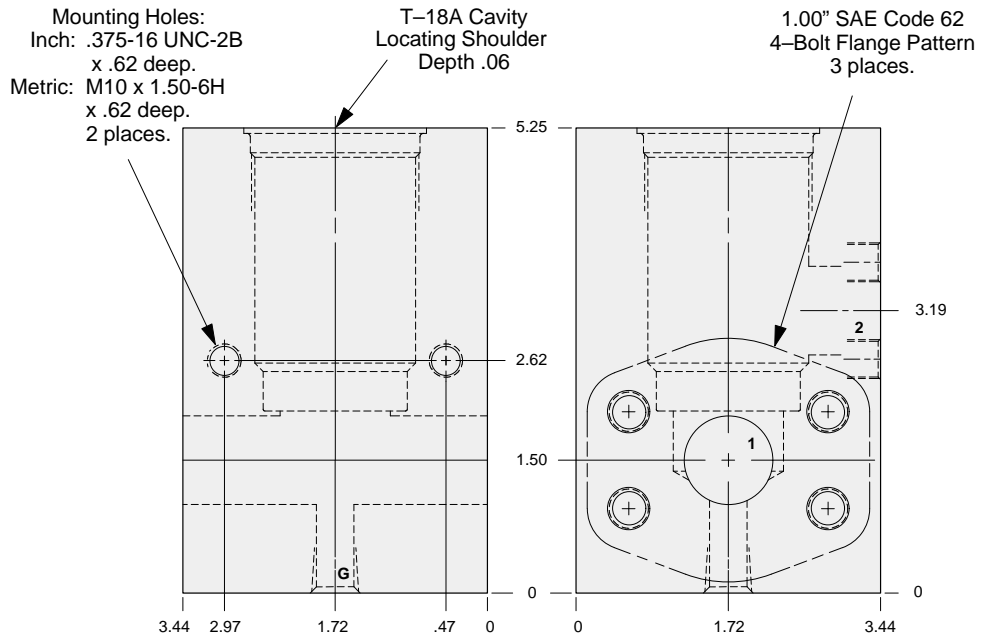
Pressure ratings, material specifications.. Page 11.02

SAE Specifications Page 11.03

Mounting Hole Dimensions	Gage Port	ALUMINUM		DUCTILE IRON	
		Part Number	List Price	Part Number	List Price
Inch	.25 NPTF	LEP		LEP/S	
Metric	.25 BSPP	LEP/M		LEP/T	



Through port 1.00" SAE Code 62 flange port body with gage port.



TYPICAL CARTRIDGES USED WITH THIS BODY

RPKC - ***	Page 1.07
RPKE - ***	Page 1.09
RDJA - ***	Page 1.11
RQKB - ***	Page 1.13
RPKD - ***	Page 1.15
NFFC - ***	Page 5.13
CNIC - ***	Page 5.15
NCGB - ***	Page 5.17
NCGC - ***	Page 5.19
FXFA - ***	Page 5.21
FCFB - ***	Page 5.23
FDFA - ***	Page 5.25

Instructions for ordering complete cartridge and body assemblies. Page v

Pressure ratings, material specifications. Page 11.02

SAE Specifications Page 11.03

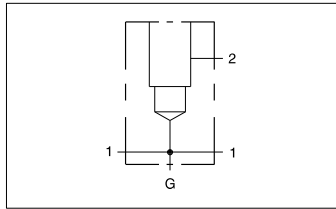
Mounting Hole Dimensions	Gage Port	ALUMINUM		DUCTILE IRON	
		Part Number	List Price	Part Number	List Price
Inch	.25 NPTF	LE4		LE4/S	
Metric	.25 BSPP	LE4/M		LE4/T	



LINE MOUNT BODIES



- Aluminum rated to 3000 psi.
- Ductile Iron rated to 5000 psi.

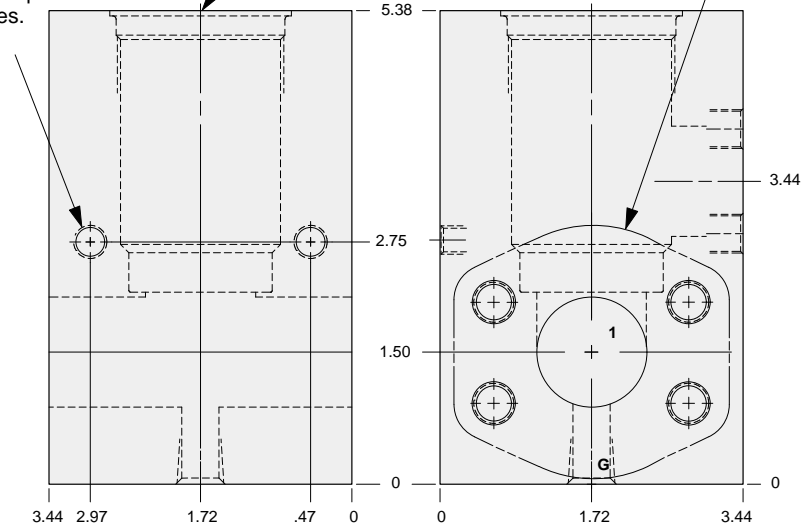


Through port 1.25" SAE Code 61 flange port body with gage port.

Mounting Holes:
 Inch: .375-16 UNC-2B
 x .62 deep.
 Metric: M10 x 1.50-6H
 x .62 deep.
 2 places.

T-18A Cavity
 Locating Shoulder
 Depth .06

1.25" SAE Code 61
 4-Bolt Flange Pattern
 3 places.



TYPICAL CARTRIDGES USED WITH THIS BODY

RPKC - ***	Page 1.07
RPKE - ***	Page 1.09
RDJA - ***	Page 1.11
RQKB - ***	Page 1.13
RPKD - ***	Page 1.15
NFFC - ***	Page 5.13
CNIC - ***	Page 5.15
NCGB - ***	Page 5.17
NCGC - ***	Page 5.19
FXFA - ***	Page 5.21
FCFB - ***	Page 5.23
FDFA - ***	Page 5.25

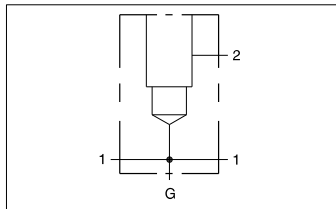
Instructions for ordering complete cartridge and body assemblies. Page v

Pressure ratings, material specifications. Page 11.02

SAE Specifications Page 11.03

Mounting Hole Dimensions	Gage Port	ALUMINUM		DUCTILE IRON	
		Part Number	List Price	Part Number	List Price
Inch	.25 NPTF	LEQ		LEQ/S	
Metric	.25 BSPP	LEQ/M		LEQ/T	

S4
T18A

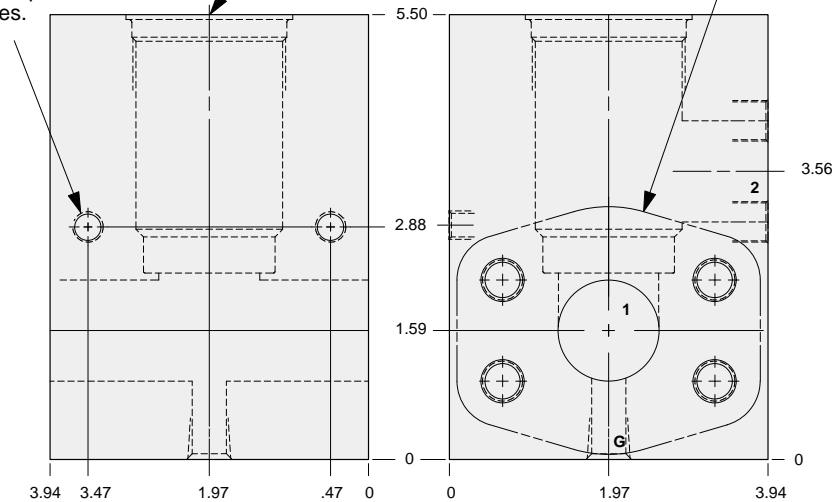


Through port 1.25" SAE Code 62 flange port body with gage port.

Mounting Holes:
 Inch: .375-16 UNC-2B
 x .62 deep.
 Metric: M10 x 1.50-6H
 x .62 deep.
 2 places.

T-18A Cavity
 Locating Shoulder
 Depth .06

1.25" SAE Code 62
 4-Bolt Flange Pattern
 3 places.



TYPICAL CARTRIDGES USED WITH THIS BODY

RPKC - ***	Page 1.07
RPKE - ***	Page 1.09
RDJA - ***	Page 1.11
RQKB - ***	Page 1.13
RPKD - ***	Page 1.15
NFFC - ***	Page 5.13
CNIC - ***	Page 5.15
NCGB - ***	Page 5.17
NCGC - ***	Page 5.19
FXFA - ***	Page 5.21
FCFB - ***	Page 5.23
FDFA - ***	Page 5.25

Instructions for ordering complete cartridge and body assemblies. Page v

Pressure ratings, material specifications. Page 11.02

SAE Specifications Page 11.03

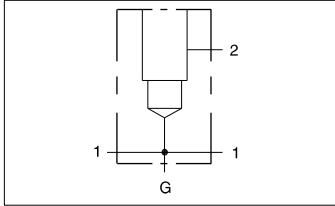
Mounting Hole Dimensions	Gage Port	ALUMINUM		DUCTILE IRON	
		Part Number	List Price	Part Number	List Price
Inch	.25 NPTF	LE5		LE5/S	
Metric	.25 BSPP	LE5/M		LE5/T	



LINE MOUNT BODIES



- Aluminum rated to 3000 psi.
- Ductile Iron rated to 5000 psi.

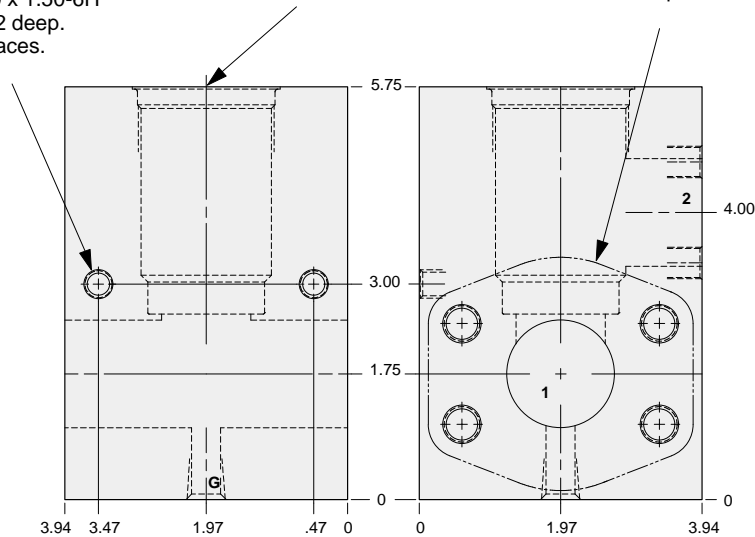


Through port 1.50" SAE Code 61 flange port body with gage port.

Mounting Holes:
Inch: .375-16 UNC-2B
x .62 deep.
Metric: M10 x 1.50-6H
x .62 deep.
2 places.

T-18A Cavity
Locating Shoulder
Depth .03

1.50" SAE Code 61
4-Bolt Flange Pattern
3 places.



Mounting Hole Dimensions	Gage Port	ALUMINUM		DUCTILE IRON	
		Part Number	List Price	Part Number	List Price
Inch	.25 NPTF	LER		LER/S	
Metric	.25 BSPP	LER/M		LER/T	

TYPICAL CARTRIDGES USED WITH THIS BODY

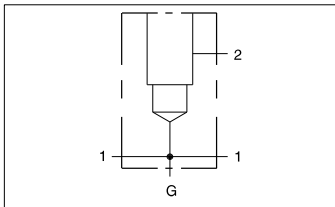
RPKC - ***	Page 1.07
RPKE - ***	Page 1.09
RDJA - ***	Page 1.11
RQKB - ***	Page 1.13
RPKD - ***	Page 1.15
NFFC - ***	Page 5.13
CNIC - ***	Page 5.15
NCGB - ***	Page 5.17
NCGC - ***	Page 5.19
FXFA - ***	Page 5.21
FCFB - ***	Page 5.23
FDFA - ***	Page 5.25

S4
T18A

Instructions for ordering complete cartridge and body assemblies. Page v

Pressure ratings, material specifications. Page 11.02

SAE Specifications Page 11.03

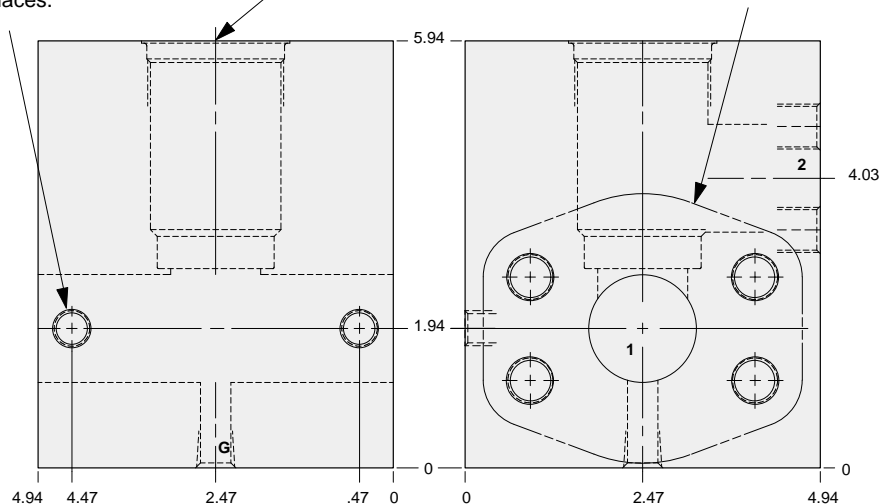


Through port 1.50" SAE Code 62 flange port body with gage port.

Mounting Holes:
Inch: .500-13 UNC-2B
x .75 deep.
Metric: M12 x 1.75-6H
x .75 deep.
2 places.

T-18A Cavity
Locating Shoulder
Depth .03

1.50" SAE Code 62
4-Bolt Flange Pattern
3 places.



Mounting Hole Dimensions	Gage Port	ALUMINUM		DUCTILE IRON	
		Part Number	List Price	Part Number	List Price
Inch	.25 NPTF	LE6		LE6/S	
Metric	.25 BSPP	LE6/M		LE6/T	

TYPICAL CARTRIDGES USED WITH THIS BODY

RPKC - ***	Page 1.07
RPKE - ***	Page 1.09
RDJA - ***	Page 1.11
RQKB - ***	Page 1.13
RPKD - ***	Page 1.15
NFFC - ***	Page 5.13
CNIC - ***	Page 5.15
NCGB - ***	Page 5.17
NCGC - ***	Page 5.19
FXFA - ***	Page 5.21
FCFB - ***	Page 5.23
FDFA - ***	Page 5.25

Instructions for ordering complete cartridge and body assemblies. Page v

Pressure ratings, material specifications. Page 11.02

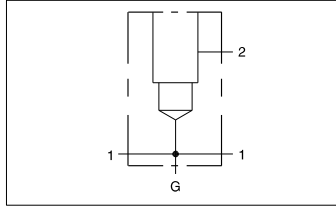
SAE Specifications Page 11.03



LINE MOUNT BODIES



- Aluminum rated to 3000 psi.
- Ductile Iron rated to 5000 psi.

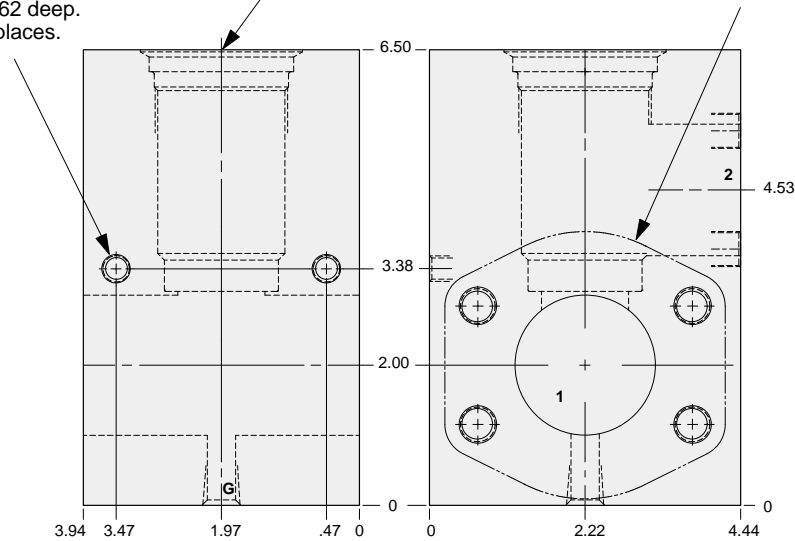


Through port 2.00" SAE Code 61 flange port body with gage port.

Mounting Holes:
Inch: .375-16 UNC-2B
x .62 deep.
Metric: M10 x 1.50-6H
x .62 deep.
2 places.

T-18A Cavity
Locating Shoulder
Depth .31

2.00" SAE Code 61
4-Bolt Flange Pattern
3 places.



TYPICAL CARTRIDGES USED WITH THIS BODY

RPKC - ***	Page 1.07
RPKE - ***	Page 1.09
RDJA - ***	Page 1.11
RQKB - ***	Page 1.13
RPKD - ***	Page 1.15
NFFC - ***	Page 5.13
CNIC - ***	Page 5.15
NCGB - ***	Page 5.17
NCGC - ***	Page 5.19
FXFA - ***	Page 5.21
FCFB - ***	Page 5.23
FDFA - ***	Page 5.25

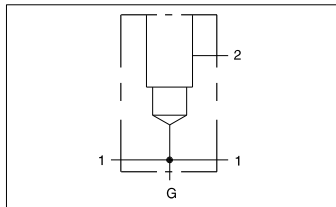
Instructions for ordering complete cartridge and body assemblies. Page v

Pressure ratings, material specifications. Page 11.02

SAE Specifications Page 11.03

Mounting Hole Dimensions	Gage Port	ALUMINUM		DUCTILE IRON	
		Part Number	List Price	Part Number	List Price
Inch	.25 NPTF	LES		LES/S	
Metric	.25 BSPP	LES/M		LES/T	

S4
T18A

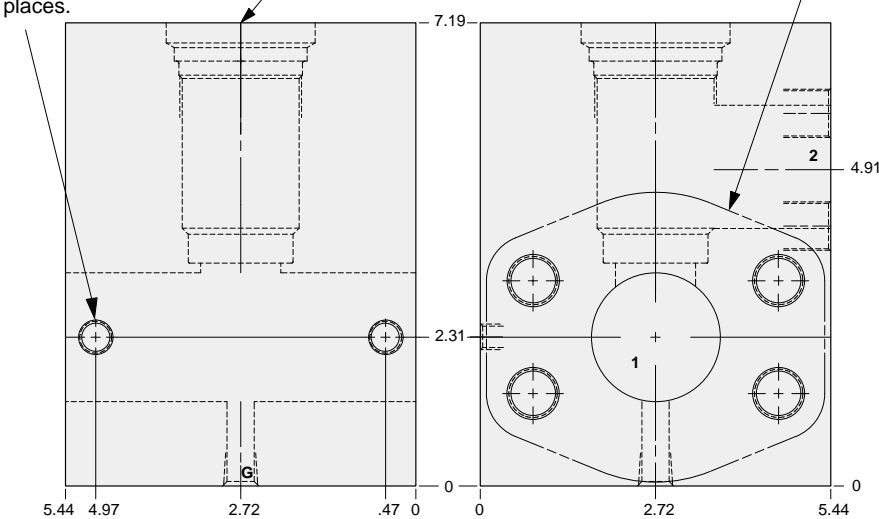


Through port 2.00" SAE Code 62 flange port body with gage port.

Mounting Holes:
Inch: .500-13 UNC-2B
x .75 deep.
Metric: M12 x 1.75-6H
x .75 deep.
2 places.

T-18A Cavity
Locating Shoulder
Depth .59

2.00" SAE Code 62
4-Bolt Flange Pattern
3 places.



TYPICAL CARTRIDGES USED WITH THIS BODY

RPKC - ***	Page 1.07
RPKE - ***	Page 1.09
RDJA - ***	Page 1.11
RQKB - ***	Page 1.13
RPKD - ***	Page 1.15
NFFC - ***	Page 5.13
CNIC - ***	Page 5.15
NCGB - ***	Page 5.17
NCGC - ***	Page 5.19
FXFA - ***	Page 5.21
FCFB - ***	Page 5.23
FDFA - ***	Page 5.25

Instructions for ordering complete cartridge and body assemblies. Page v

Pressure ratings, material specifications. Page 11.02

SAE Specifications Page 11.03

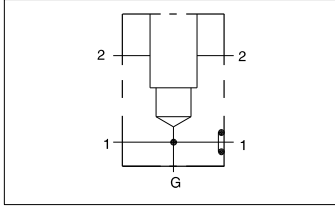
Mounting Hole Dimensions	Gage Port	ALUMINUM		DUCTILE IRON	
		Part Number	List Price	Part Number	List Price
Inch	.25 NPTF	LE8		LE8/S	
Metric	.25 BSPP	LE8/M		LE8/T	



LINE MOUNT BODIES



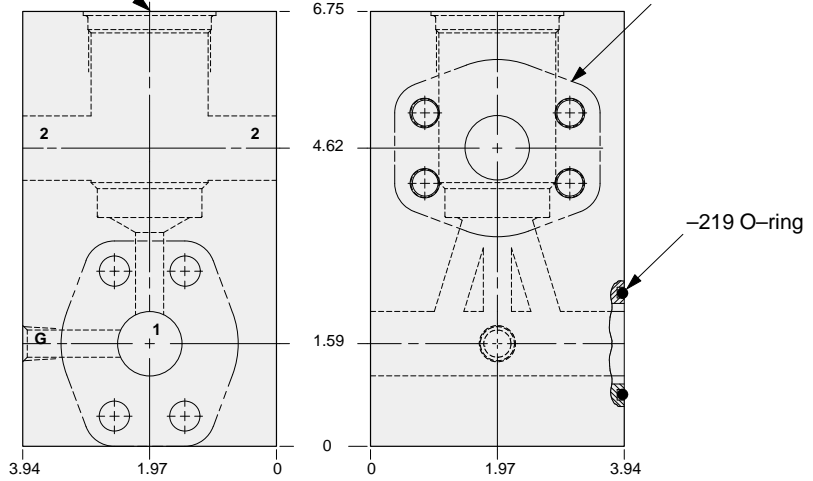
- Aluminum rated to 3000 psi.
- Ductile Iron rated to 5000 psi.



Sandwich mount through flange port 1.00" SAE Code 62 body with gage port.

T-18A Cavity
Locating Shoulder
Depth .06

1.00" SAE Code 62
4-Bolt Flange Pattern
3 places.
Port 1 through hole
Port 2 tapped hole



TYPICAL CARTRIDGES USED WITH THIS BODY

- RPKC - *** Page 1.07
 RPKE - *** Page 1.09
 RDJA - *** Page 1.11
 RQKB - *** Page 1.13
 RPKD - *** Page 1.15

Cartridge seal type determines O-ring type.

Instructions for ordering complete cartridge and body assemblies. Page v

S4
T18A

Pressure ratings, material specifications. Page 11.02

SAE Specifications Page 11.03

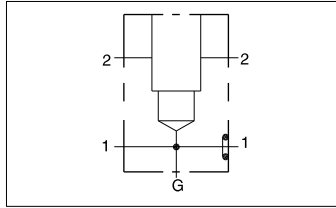
Mounting Hole Dimensions	Gage Port	ALUMINUM		DUCTILE IRON	
		Part Number	List Price	Part Number	List Price
Inch	.25 NPTF	WJM		WJM/S	
Metric	.25 BSPP	WJM/M		WJM/T	



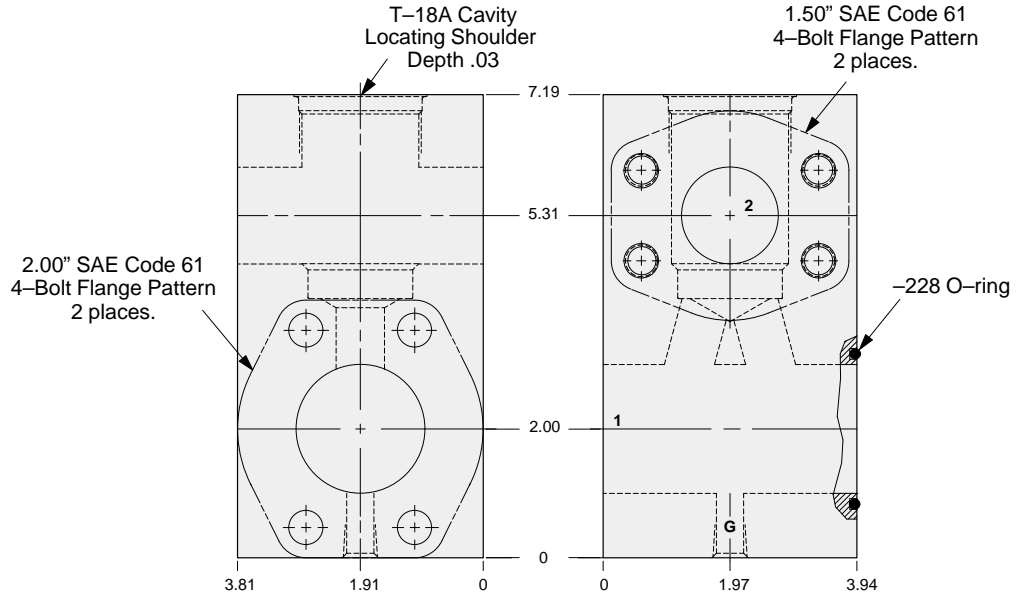
LINE MOUNT BODIES



- Aluminum rated to 3000 psi.
- Ductile Iron rated to 5000 psi.



Sandwich mount through flange port 2.00" SAE Code 61 body with gage port.



S4
T18A

TYPICAL CARTRIDGES USED WITH THIS BODY

RPKC - ***	Page 1.07
RPKE - ***	Page 1.09
RDJA - ***	Page 1.11
RQKB - ***	Page 1.13
RPKD - ***	Page 1.15

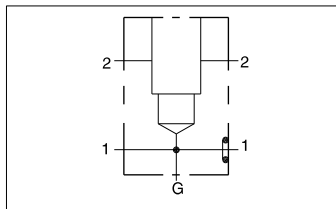
Cartridge seal type determines O-ring type.

Instructions for ordering complete cartridge and body assemblies. Page v

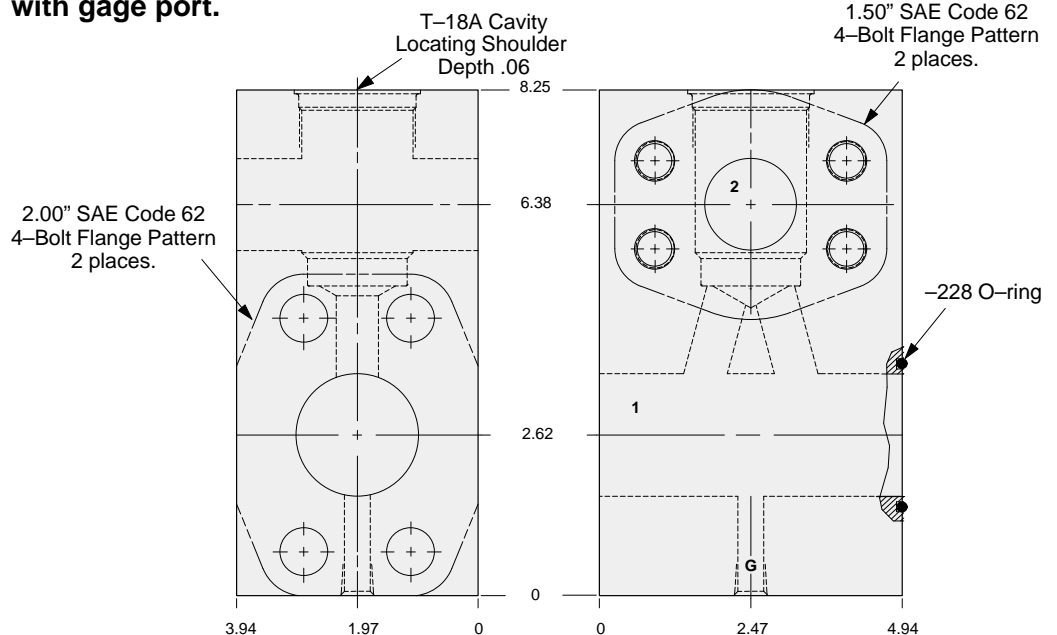
Pressure ratings, material specifications. Page 11.02

SAE Specifications Page 11.03

Mounting Hole Dimensions	Port 2 SAE Code 61	Gage Port	ALUMINUM		DUCTILE IRON	
			Part Number	List Price	Part Number	List Price
Inch	1.50"	.25 NPTF	ZBF		ZBF/S	
Metric	1.50"	.25 BSPP	ZBF/M		ZBF/T	



Sandwich mount through flange port 2.00" SAE Code 62 body with gage port.



TYPICAL CARTRIDGES USED WITH THIS BODY

RPKC - ***	Page 1.07
RPKE - ***	Page 1.09
RDJA - ***	Page 1.11
RQKB - ***	Page 1.13
RPKD - ***	Page 1.15

Cartridge seal type determines O-ring type.

Instructions for ordering complete cartridge and body assemblies. Page v

Pressure ratings, material specifications. Page 11.02

SAE Specifications Page 11.03

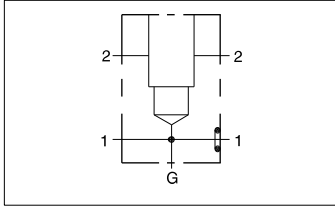
Mounting Hole Dimensions	Port 2 SAE Code 62	Gage Port	ALUMINUM		DUCTILE IRON	
			Part Number	List Price	Part Number	List Price
Inch	1.50"	.25 NPTF	ZBH		ZBH/S	
Metric	1.50"	.25 BSPP	ZBH/M		ZBH/T	



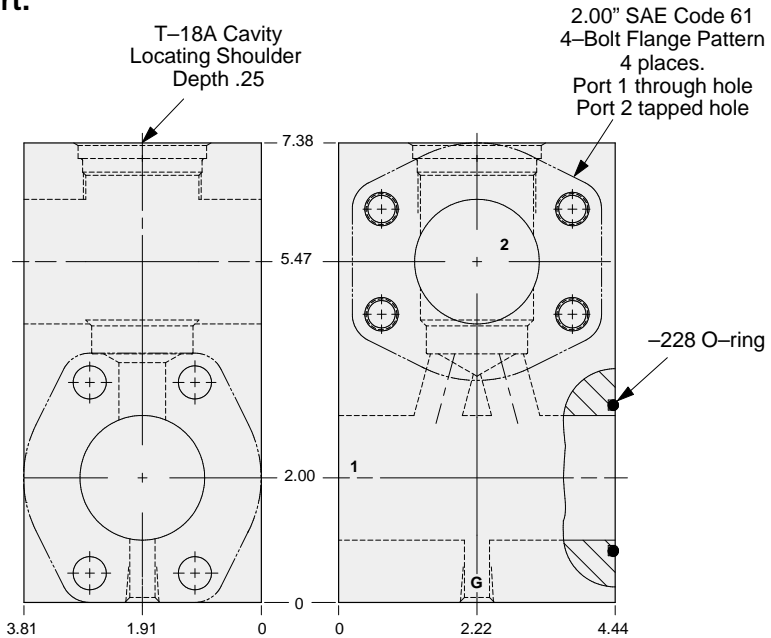
LINE MOUNT BODIES



- Aluminum rated to 3000 psi.
- Ductile Iron rated to 5000 psi.



Sandwich mount through flange port 2.00" SAE Code 61 body with gage port.



TYPICAL CARTRIDGES USED WITH THIS BODY

- RPKC - *** Page 1.07
- RPKE - *** Page 1.09
- RDJA - *** Page 1.11
- RQKB - *** Page 1.13
- RPKD - *** Page 1.15

Cartridge seal type determines O-ring type.

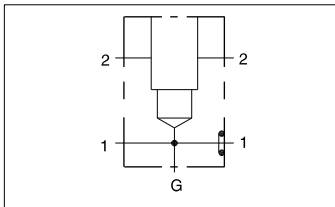
Instructions for ordering complete cartridge and body assemblies. Page v

S4
T18A

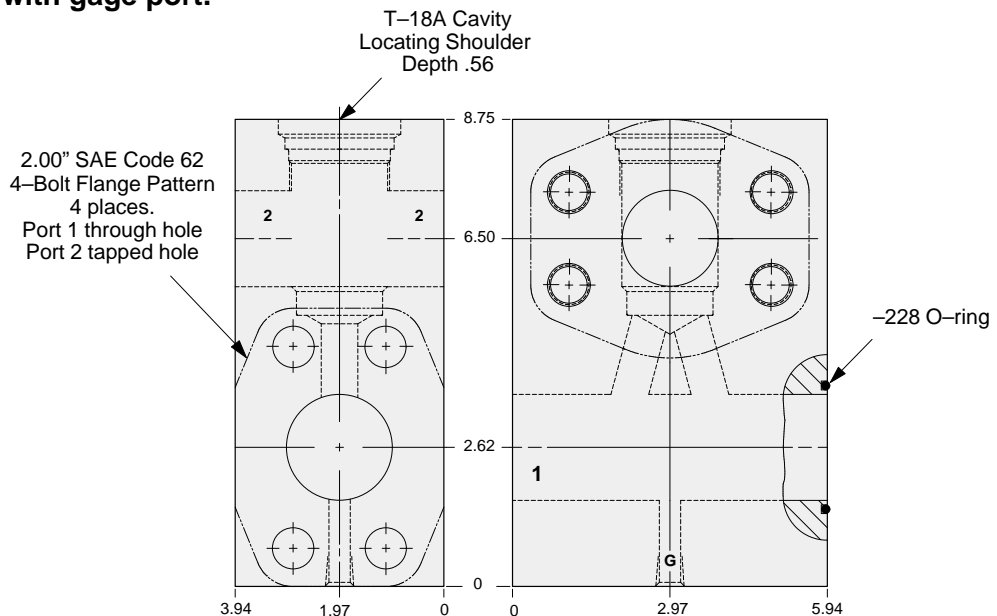
Pressure ratings, material specifications. Page 11.02

SAE Specifications Page 11.03

Mounting Hole Dimensions	Gage Port	ALUMINUM		DUCTILE IRON	
		Part Number	List Price	Part Number	List Price
Inch	.25 NPTF	ZBE		ZBE/S	
Metric	.25 BSPP	ZBE/M		ZBE/T	



Sandwich mount through flange port 2.00" SAE Code 62 body with gage port.



TYPICAL CARTRIDGES USED WITH THIS BODY

- RPKC - *** Page 1.07
- RPKE - *** Page 1.09
- RDJA - *** Page 1.11
- RQKB - *** Page 1.13
- RPKD - *** Page 1.15

Cartridge seal type determines O-ring type.

Instructions for ordering complete cartridge and body assemblies. Page v

Pressure ratings, material specifications. Page 11.02

SAE Specifications Page 11.03

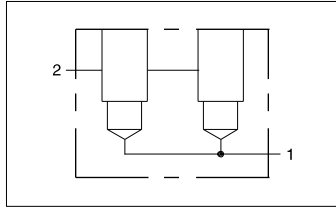
Mounting Hole Dimensions	Gage Port	ALUMINUM		DUCTILE IRON	
		Part Number	List Price	Part Number	List Price
Inch	.25 NPTF	ZBG		ZBG/S	
Metric	.25 BSPP	ZBG/M		ZBG/T	



LINE MOUNT BODIES



- Aluminum rated to 3000 psi.
- Ductile Iron rated to 5000 psi.



Two cavity 2.00" SAE Code 61 flange port high capacity body.

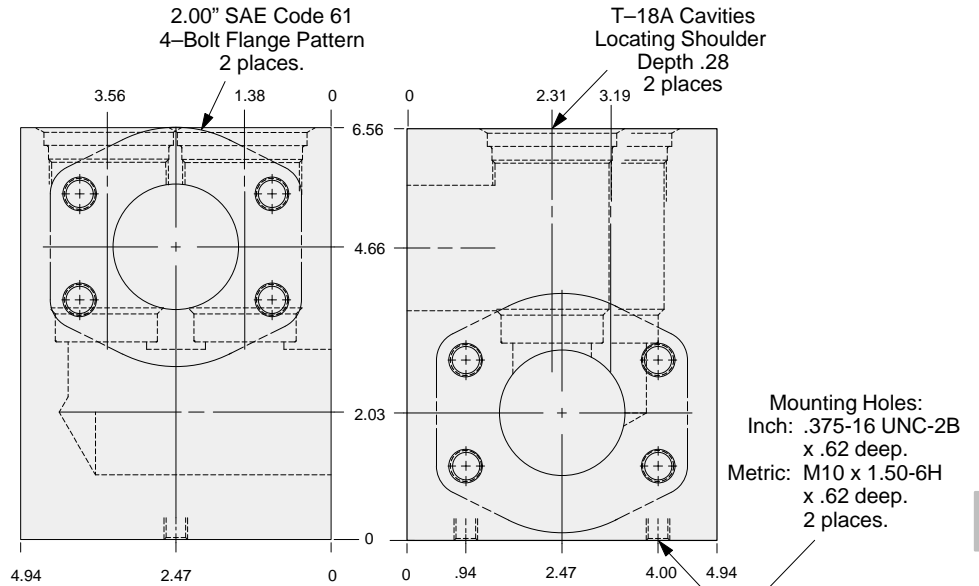
TYPICAL CARTRIDGES USED WITH THIS BODY

- RPKC - *** Page 1.07
- RPKE - *** Page 1.09
- RDJA - *** Page 1.11
- RQKB - *** Page 1.13
- RPKD - *** Page 1.15

Instructions for ordering complete cartridge and body assemblies. Page v

Pressure ratings, material specifications. Page 11.02

SAE Specifications Page 11.03



S4
T18A

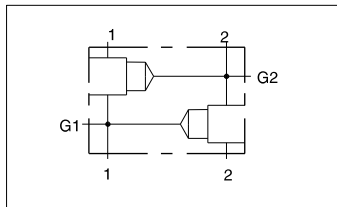
Mounting Hole Dimensions	ALUMINUM		DUCTILE IRON	
	Part Number	List Price	Part Number	List Price
Inch	XZY		XZY/S	
Metric	XZY/M		XZY/T	



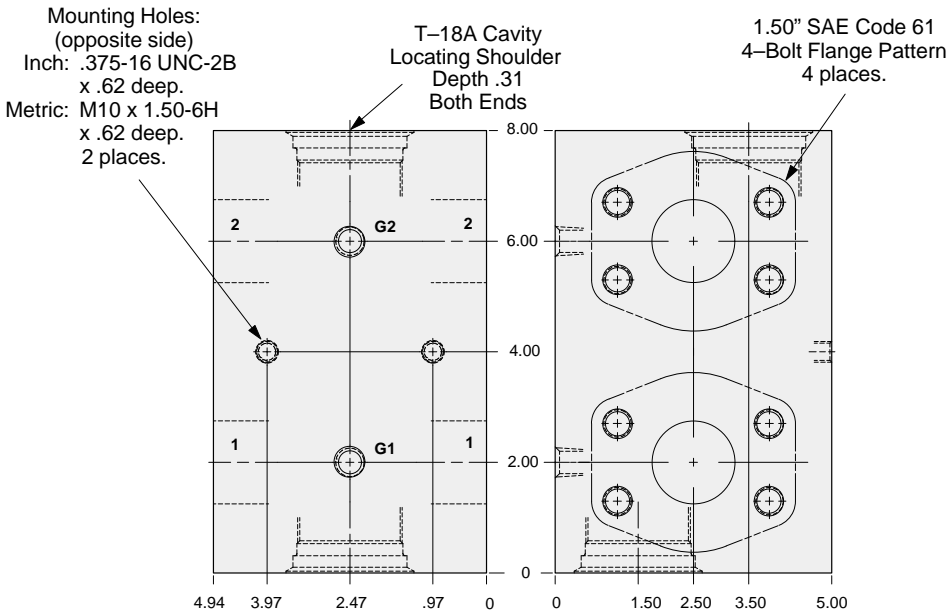
LINE MOUNT BODIES



- Aluminum rated to 3000 psi.
- Ductile Iron rated to 5000 psi.



Two cavity 1.50" SAE Code 61 flange port body with gage ports for cross port relief applications.



TYPICAL CARTRIDGES USED WITH THIS BODY

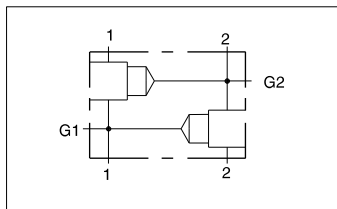
- RPKC - *** Page 1.07
RPKE - *** Page 1.09
RDJA - *** Page 1.11
RQKB - *** Page 1.13

Instructions for ordering complete cartridge and body assemblies. Page v

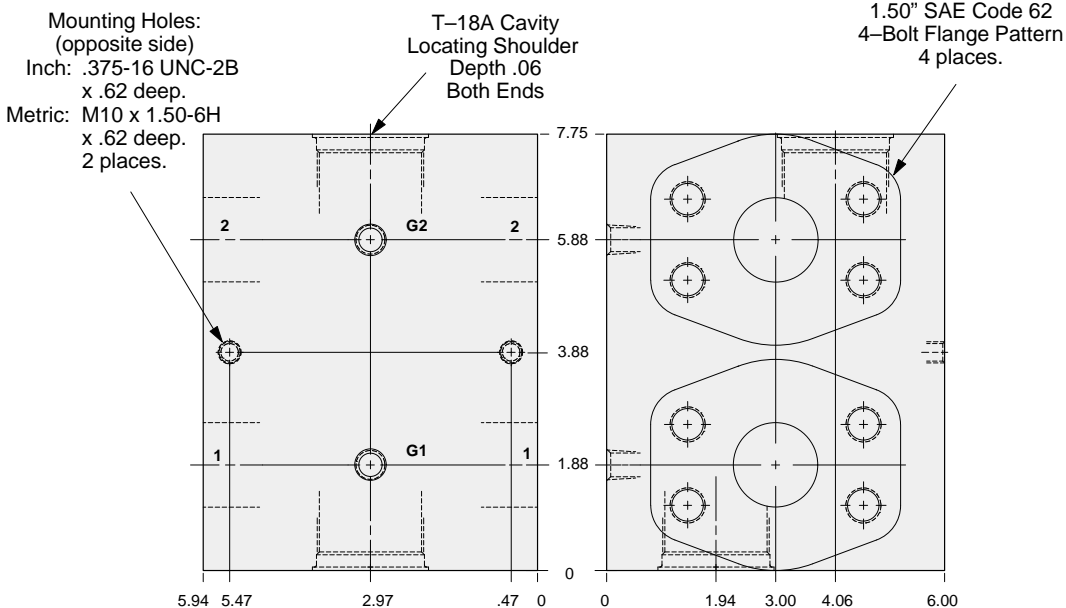
Pressure ratings, material specifications. Page 11.02

SAE Specifications Page 11.03

Mounting Hole Dimensions	Gage Ports	ALUMINUM		DUCTILE IRON	
		Part Number	List Price	Part Number	List Price
Inch	.25 NPTF	YLR		YLR/S	
Metric	.25 BSPP	YLR/M		YLR/T	



Two cavity 1.50" SAE Code 62 flange port body with gage ports for cross port relief applications.



TYPICAL CARTRIDGES USED WITH THIS BODY

- RPKC - *** Page 1.07
RPKE - *** Page 1.09
RDJA - *** Page 1.11
RQKB - *** Page 1.13

Instructions for ordering complete cartridge and body assemblies. Page v

Pressure ratings, material specifications. Page 11.02

SAE Specifications Page 11.03

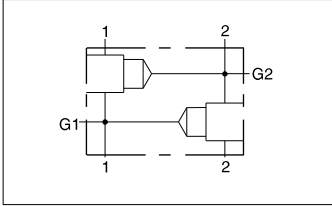
Mounting Hole Dimensions	Gage Ports	ALUMINUM		DUCTILE IRON	
		Part Number	List Price	Part Number	List Price
Inch	.25 NPTF	YL6		YL6/S	
Metric	.25 BSPP	YL6/M		YL6/T	



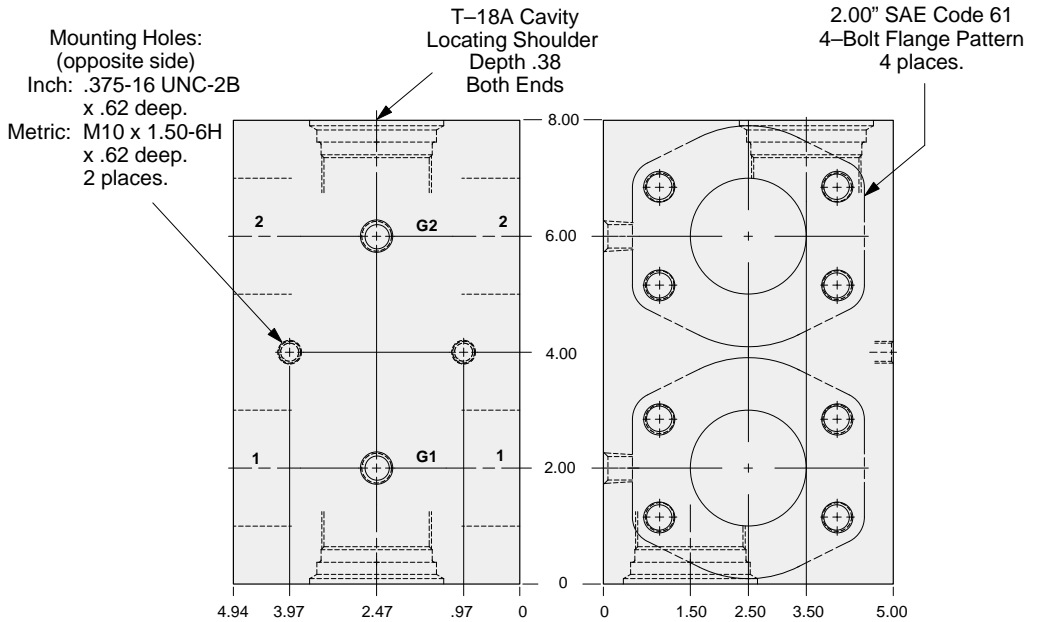
LINE MOUNT BODIES



- Aluminum rated to 3000 psi.
- Ductile Iron rated to 5000 psi.



Two cavity 2.00" SAE Code 61 flange port body with gage ports for cross port relief applications.



TYPICAL CARTRIDGES USED WITH THIS BODY

- RPKC - *** Page 1.07
- RPKE - *** Page 1.09
- RDJA - *** Page 1.11
- RQKB - *** Page 1.13

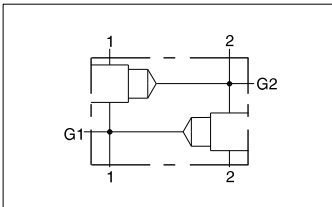
Instructions for ordering complete cartridge and body assemblies. Page v

Pressure ratings, material specifications. Page 11.02

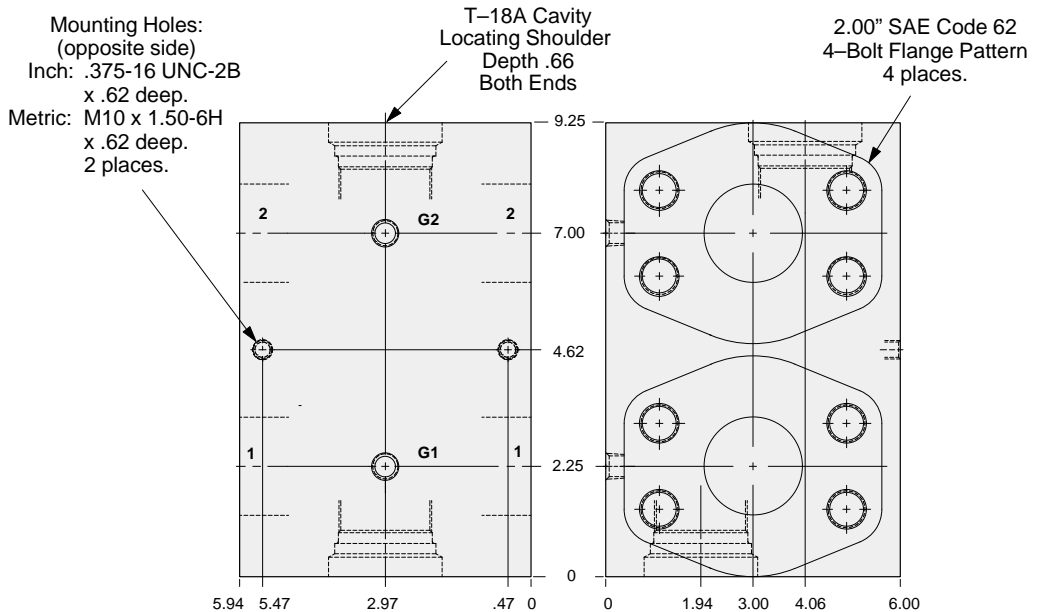
SAE Specifications Page 11.03

Mounting Hole Dimensions	Gage Ports	ALUMINUM		DUCTILE IRON	
		Part Number	List Price	Part Number	List Price
Inch	.25 NPTF	YLS		YLS/S	
Metric	.25 BSPP	YLS/M		YLS/T	

S4
T18A



Two cavity 2.00" SAE Code 62 flange port body with gage ports for cross port relief applications.



TYPICAL CARTRIDGES USED WITH THIS BODY

- RPKC - *** Page 1.07
- RPKE - *** Page 1.09
- RDJA - *** Page 1.11
- RQKB - *** Page 1.13

Instructions for ordering complete cartridge and body assemblies. Page v

Pressure ratings, material specifications. Page 11.02

SAE Specifications Page 11.03

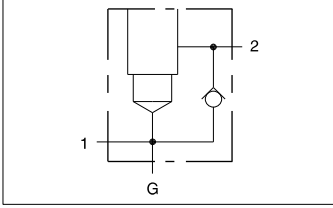
Mounting Hole Dimensions	Gage Ports	ALUMINUM		DUCTILE IRON	
		Part Number	List Price	Part Number	List Price
Inch	.25 NPTF	YL8		YL8/S	
Metric	.25 BSPP	YL8/M		YL8/T	



LINE MOUNT BODIES

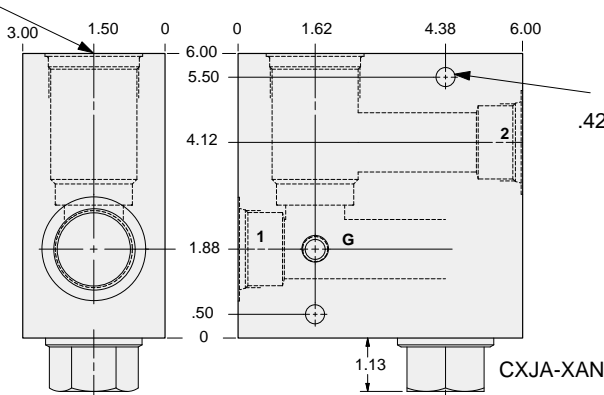


- Aluminum rated to 3000 psi.
- Ductile Iron rated to 5000 psi.



Body with reverse free flow check.

T-18A Cavity
Locating Shoulder
Depth .06



Mounting Holes:
.42 diameter through hole.
2 places.

TYPICAL CARTRIDGES USED WITH THIS BODY

RPKC - ***	Page 1.07
RPKE - ***	Page 1.09
RDJA - ***	Page 1.11
RQKB - ***	Page 1.13
RPKD - ***	Page 1.15

Cartridge seal type determines
check valve seal type.

Instructions for ordering
complete cartridge and body
assemblies. Page v

Pressure ratings, material
specifications. Page 11.02

S4
T18A

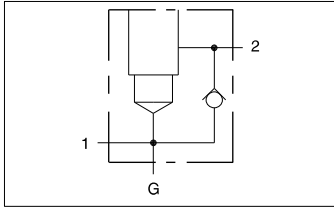
Mounting Hole Dimensions	Ports 1 & 2	Gage Port	ALUMINUM		DUCTILE IRON	
			Part Number	List Price	Part Number	List Price
Inch	.75 NPTF	.25 NPTF	LND		LND/S	
Inch	1.00 NPTF	.25 NPTF	LNE		LNE/S	
Inch	1.25 NPTF	.25 NPTF	LNF		LNF/S	
Inch	SAE-12	.25 NPTF	LNL		LNL/S	
Inch	SAE-16	.25 NPTF	LNM		LNM/S	
Inch	SAE-20	.25 NPTF	LNN		LNN/S	
Metric	.75 BSPP	.25 BSPP	LNW		LNW/S	
Metric	1.00 BSPP	.25 BSPP	LNX		LNX/S	
Metric	1.25 BSPP	.25 BSPP	LNy		LNy/S	



LINE MOUNT BODIES



- Aluminum rated to 3000 psi.
- Ductile Iron rated to 5000 psi.



1.25" SAE Code 61 flange port body with reverse free flow check for relief applications.

TYPICAL CARTRIDGES USED WITH THIS BODY

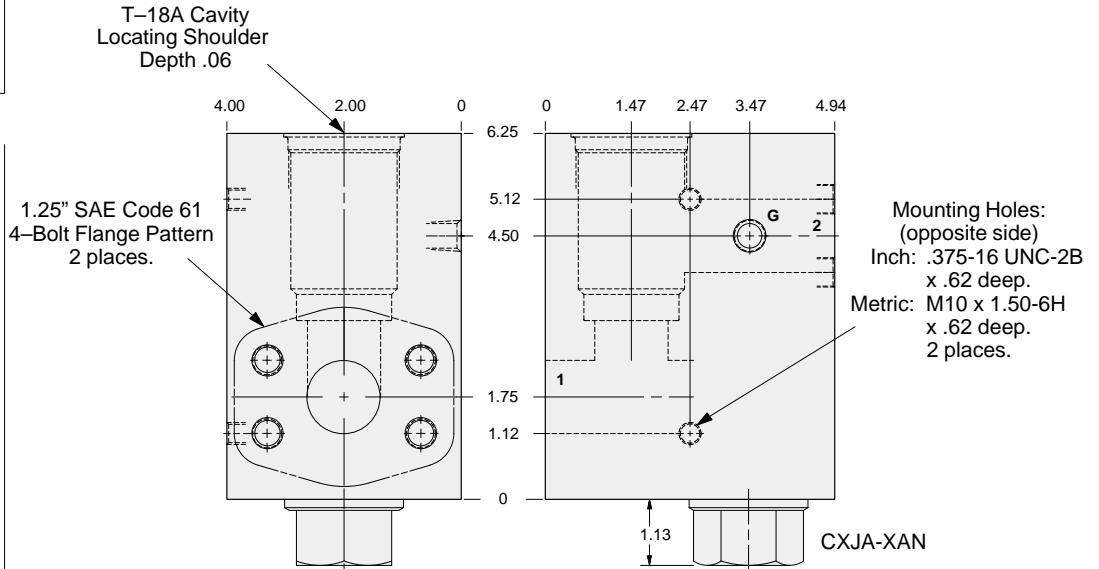
RPKC - ***	Page 1.07
RPKE - ***	Page 1.09
RDJA - ***	Page 1.11
RQKB - ***	Page 1.13
RPKD - ***	Page 1.15

Cartridge seal type determines check valve seal type.

Instructions for ordering complete cartridge and body assemblies. Page v

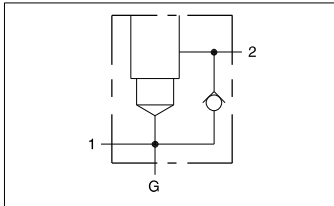
Pressure ratings, material specifications. Page 11.02

SAE Specifications Page 11.03



Mounting Hole Dimensions	Gage Port	ALUMINUM		DUCTILE IRON	
		Part Number	List Price	Part Number	List Price
Inch	.25 NPTF	LNQ		LNQ/S	
Metric	.25 BSPP	LNQ/M		LNQ/T	

S4
T18A



1.25" SAE Code 62 flange port body with reverse free flow check for relief applications.

TYPICAL CARTRIDGES USED WITH THIS BODY

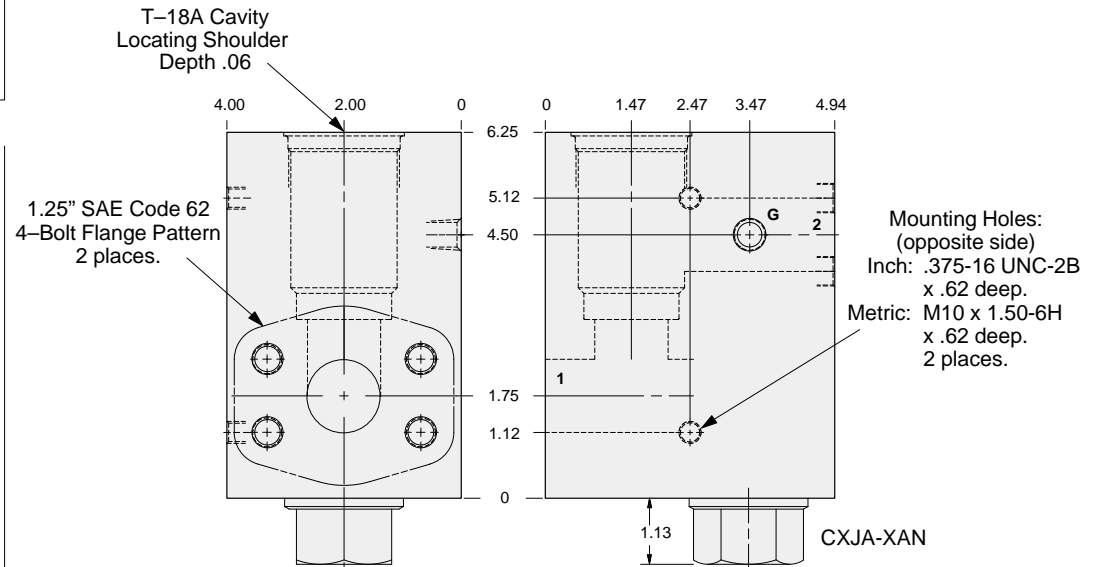
RPKC - ***	Page 1.07
RPKE - ***	Page 1.09
RDJA - ***	Page 1.11
RQKB - ***	Page 1.13
RPKD - ***	Page 1.15

Cartridge seal type determines check valve seal type.

Instructions for ordering complete cartridge and body assemblies. Page v

Pressure ratings, material specifications. Page 11.02

SAE Specifications Page 11.03



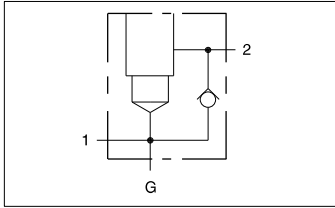
Mounting Hole Dimensions	Gage Port	ALUMINUM		DUCTILE IRON	
		Part Number	List Price	Part Number	List Price
Inch	.25 NPTF	LN5		LN5/S	
Metric	.25 BSPP	LN5/M		LN5/T	



LINE MOUNT BODIES



- Aluminum rated to 3000 psi.
- Ductile Iron rated to 5000 psi.

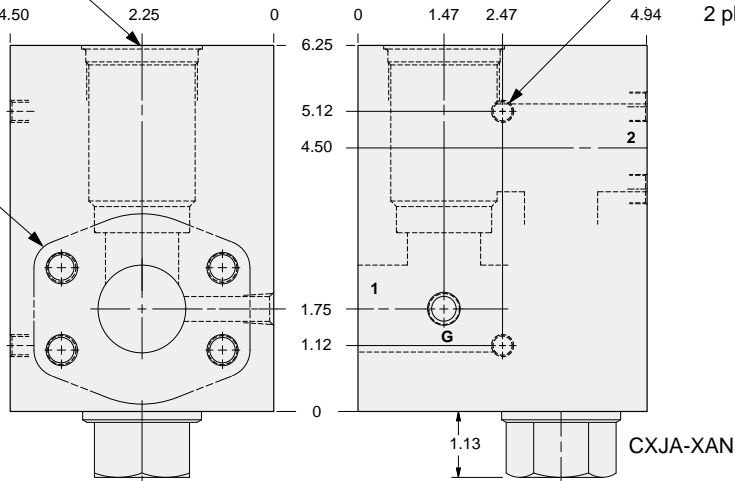


1.50" SAE Code 61 flange port body with reverse free flow check for relief applications.

Mounting Holes:
(opposite side)
Inch: .375-16 UNC-2B
x .62 deep.
Metric: M10 x 1.50-6H
x .62 deep.
2 places.

T-18A Cavity
Locating Shoulder
Depth .06

1.50" SAE Code 61
4-Bolt Flange Pattern
2 places.



TYPICAL CARTRIDGES USED WITH THIS BODY

- | | |
|------------|-----------|
| RPKC - *** | Page 1.07 |
| RPKE - *** | Page 1.09 |
| RDJA - *** | Page 1.11 |
| RQKB - *** | Page 1.13 |
| RPKD - *** | Page 1.15 |

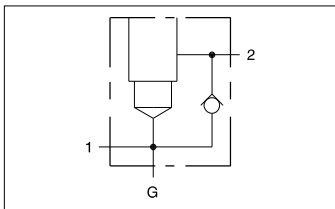
Cartridge seal type determines check valve seal type.

Instructions for ordering complete cartridge and body assemblies. Page v

Pressure ratings, material specifications. Page 11.02

SAE Specifications Page 11.03

Mounting Hole Dimensions	Gage Port	ALUMINUM		DUCTILE IRON	
		Part Number	List Price	Part Number	List Price
Inch	.25 NPTF	LNR		LNR/S	
Metric	.25 BSPP	LNR/M		LNR/T	

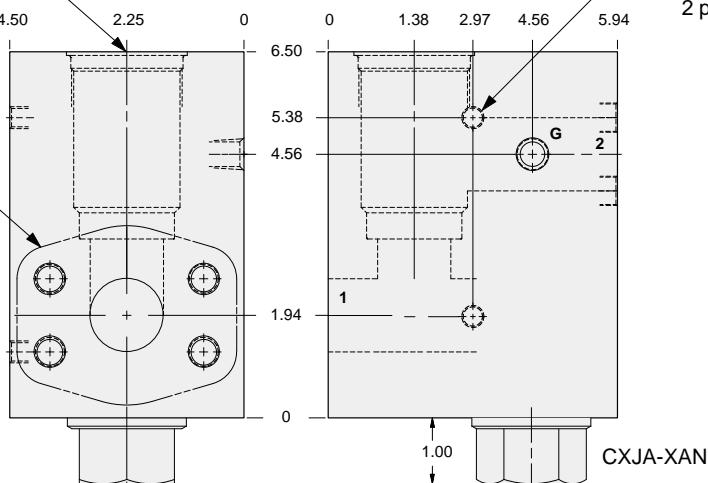


1.50" SAE Code 62 flange port body with reverse free flow check for relief applications.

Mounting Holes:
(opposite side)
Inch: .375-16 UNC-2B
x .62 deep.
Metric: M10 x 1.50-6H
x .62 deep.
2 places.

T-18A Cavity
Locating Shoulder
Depth .19

1.50" SAE Code 62
4-Bolt Flange Pattern
2 places.



TYPICAL CARTRIDGES USED WITH THIS BODY

- | | |
|------------|-----------|
| RPKC - *** | Page 1.07 |
| RPKE - *** | Page 1.09 |
| RDJA - *** | Page 1.11 |
| RQKB - *** | Page 1.13 |
| RPKD - *** | Page 1.15 |

Cartridge seal type determines check valve seal type.

Instructions for ordering complete cartridge and body assemblies. Page v

Pressure ratings, material specifications. Page 11.02

SAE Specifications Page 11.03

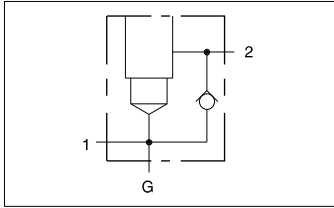
Mounting Hole Dimensions	Gage Port	ALUMINUM		DUCTILE IRON	
		Part Number	List Price	Part Number	List Price
Inch	.25 NPTF	LN6		LN6/S	
Metric	.25 BSPP	LN6/M		LN6/T	



LINE MOUNT BODIES



- Aluminum rated to 3000 psi.
- Ductile Iron rated to 5000 psi.

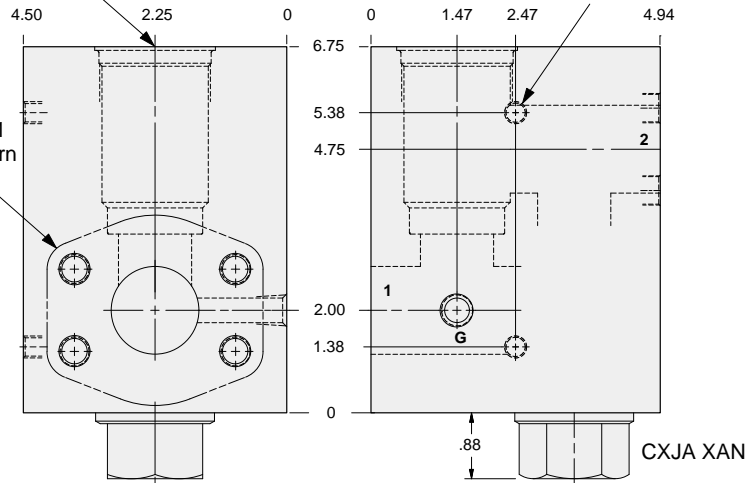


2.00" SAE Code 61 flange port body with reverse free flow check for relief applications.

Mounting Holes:
(opposite side)
Inch: .375-16 UNC-2B
x .62 deep.
Metric: M10 x 1.50-6H
x .62 deep.
2 places.

T-18A Cavity
Locating Shoulder
Depth .31

2.00" SAE Code 61
4-Bolt Flange Pattern
2 places.



TYPICAL CARTRIDGES USED WITH THIS BODY

RPKC - ***	Page 1.07
RPKE - ***	Page 1.09
RDJA - ***	Page 1.11
RQKB - ***	Page 1.13
RPKD - ***	Page 1.15

Cartridge seal type determines check valve seal type.

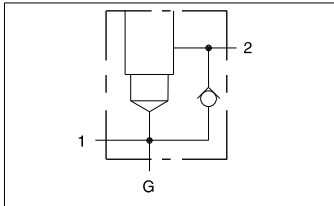
Instructions for ordering complete cartridge and body assemblies. Page v

Pressure ratings, material specifications. Page 11.02

SAE Specifications Page 11.03

Mounting Hole Dimensions	Gage Port	ALUMINUM		DUCTILE IRON	
		Part Number	List Price	Part Number	List Price
Inch	.25 NPTF	LNS		LNS/S	
Metric	.25 BSPP	LNS/M		LNS/T	

S4
T18A

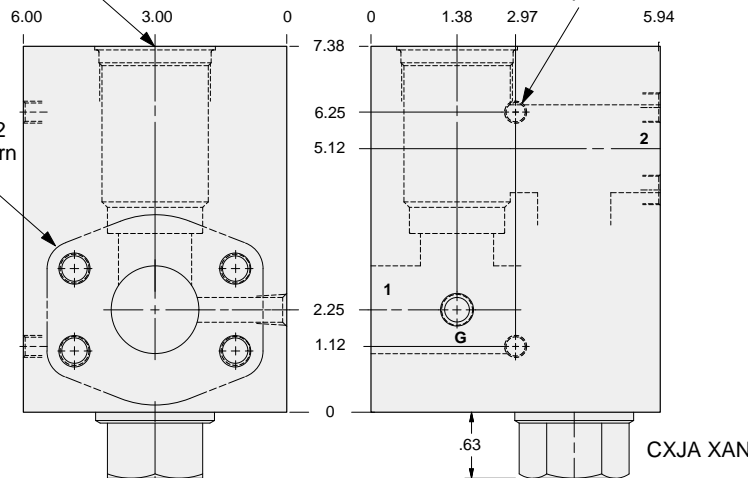


2.00" SAE Code 62 flange port body with reverse free flow check for relief applications.

Mounting Holes:
(opposite side)
Inch: .375-16 UNC-2B
x .62 deep.
Metric: M10 x 1.50-6H
x .62 deep.
2 places.

T-18A Cavity
Locating Shoulder
Depth .56

2.00" SAE Code 62
4-Bolt Flange Pattern
2 places.



TYPICAL CARTRIDGES USED WITH THIS BODY

RPKC - ***	Page 1.07
RPKE - ***	Page 1.09
RDJA - ***	Page 1.11
RQKB - ***	Page 1.13
RPKD - ***	Page 1.15

Cartridge seal type determines check valve seal type.

Instructions for ordering complete cartridge and body assemblies. Page v

Pressure ratings, material specifications. Page 11.02

SAE Specifications Page 11.03

Mounting Hole Dimensions	Gage Port	ALUMINUM		DUCTILE IRON	
		Part Number	List Price	Part Number	List Price
Inch	.25 NPTF	LN8		LN8/S	
Metric	.25 BSPP	LN8/M		LN8/T	